

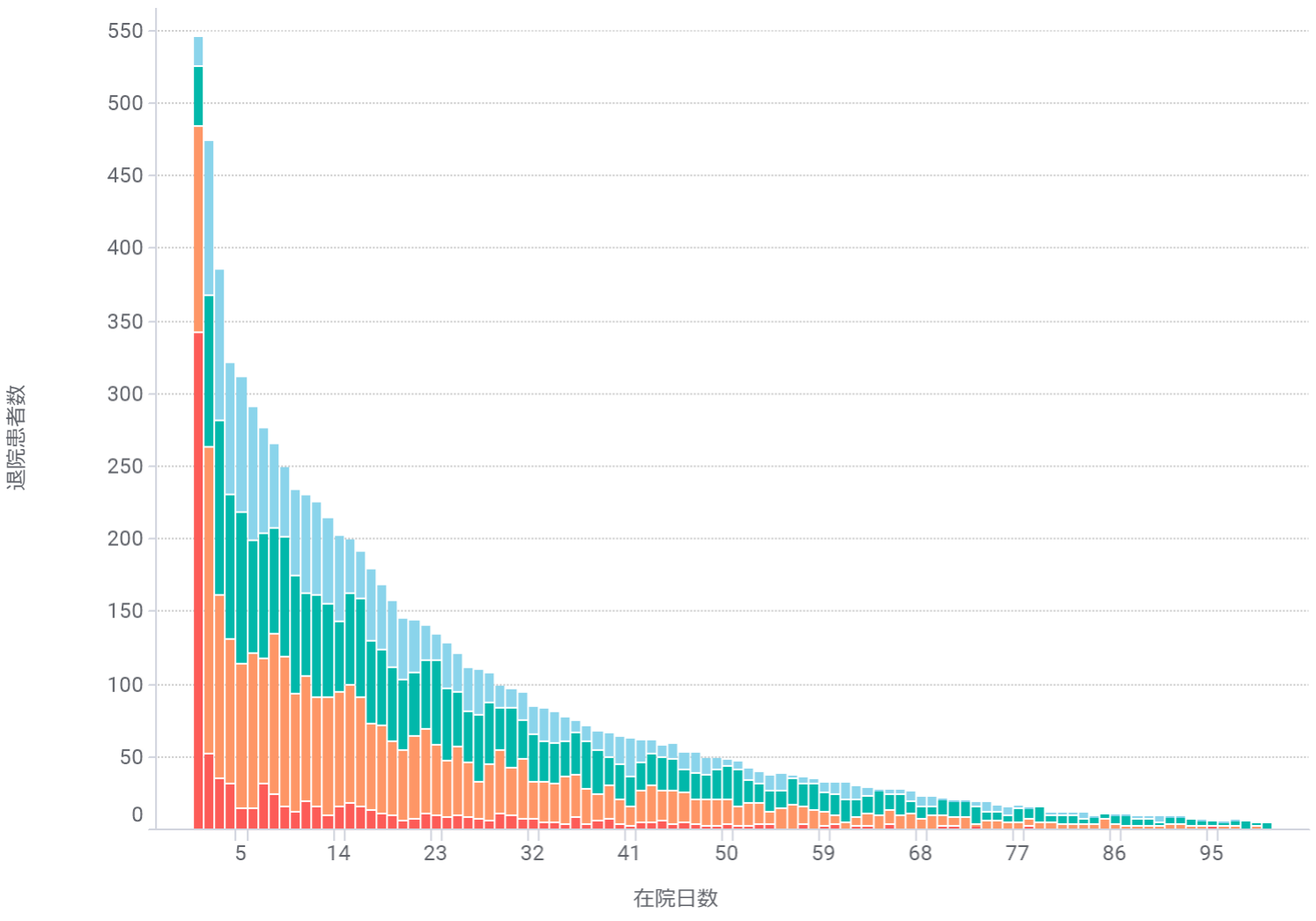
医療資源投入量の分布

厚生労働省が平成27年3月に示した地域医療構想策定ガイドラインの医療機能区分（高度急性期P1：3,000点以上、急性期P2：600点以上、回復期P3：175点以上、慢性期P4：175点未満）に基づき、DPCコード(診断群分類番号)のMDC（Major Diagnostic Category）別の医療資源投入量の分布状況についての実態把握

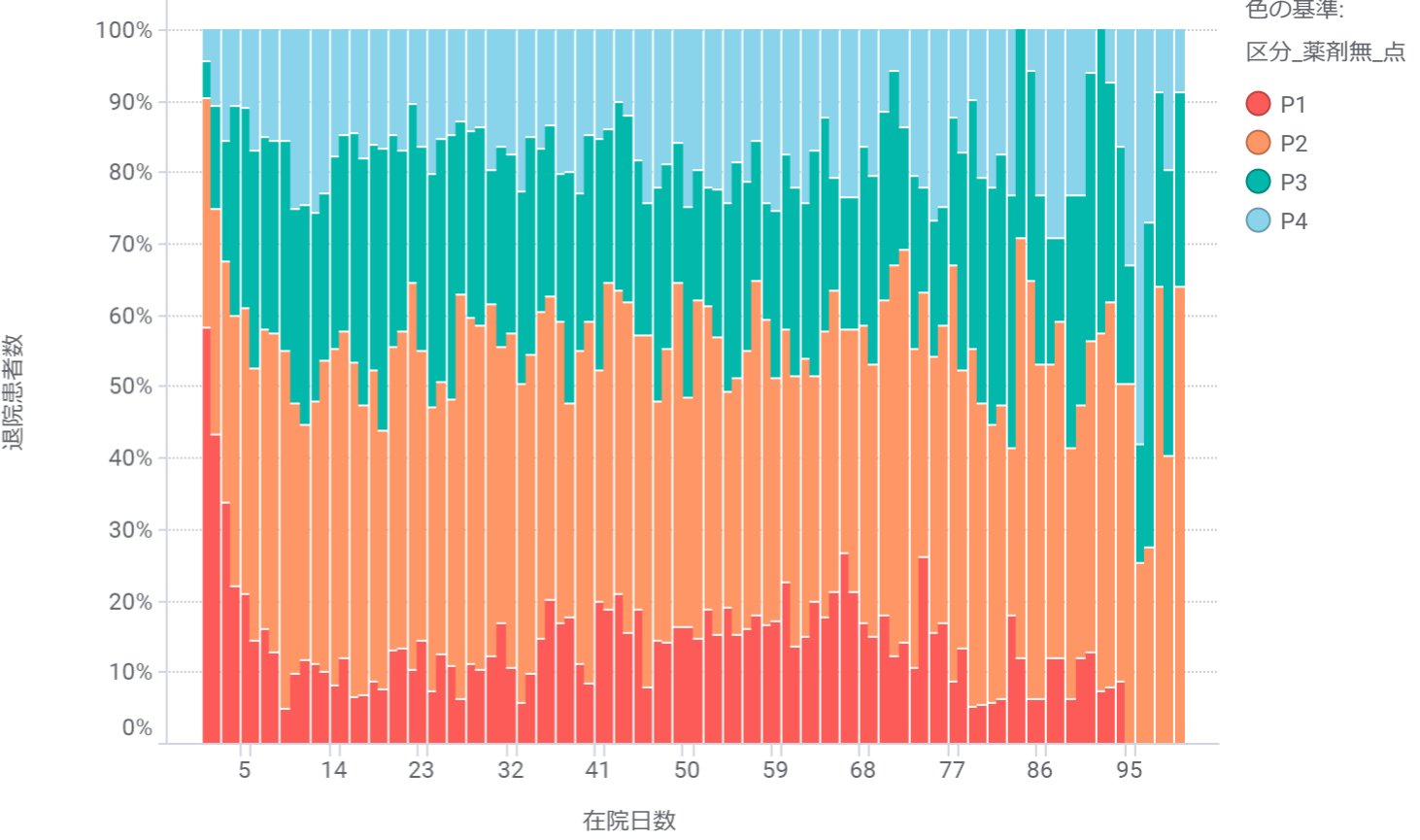
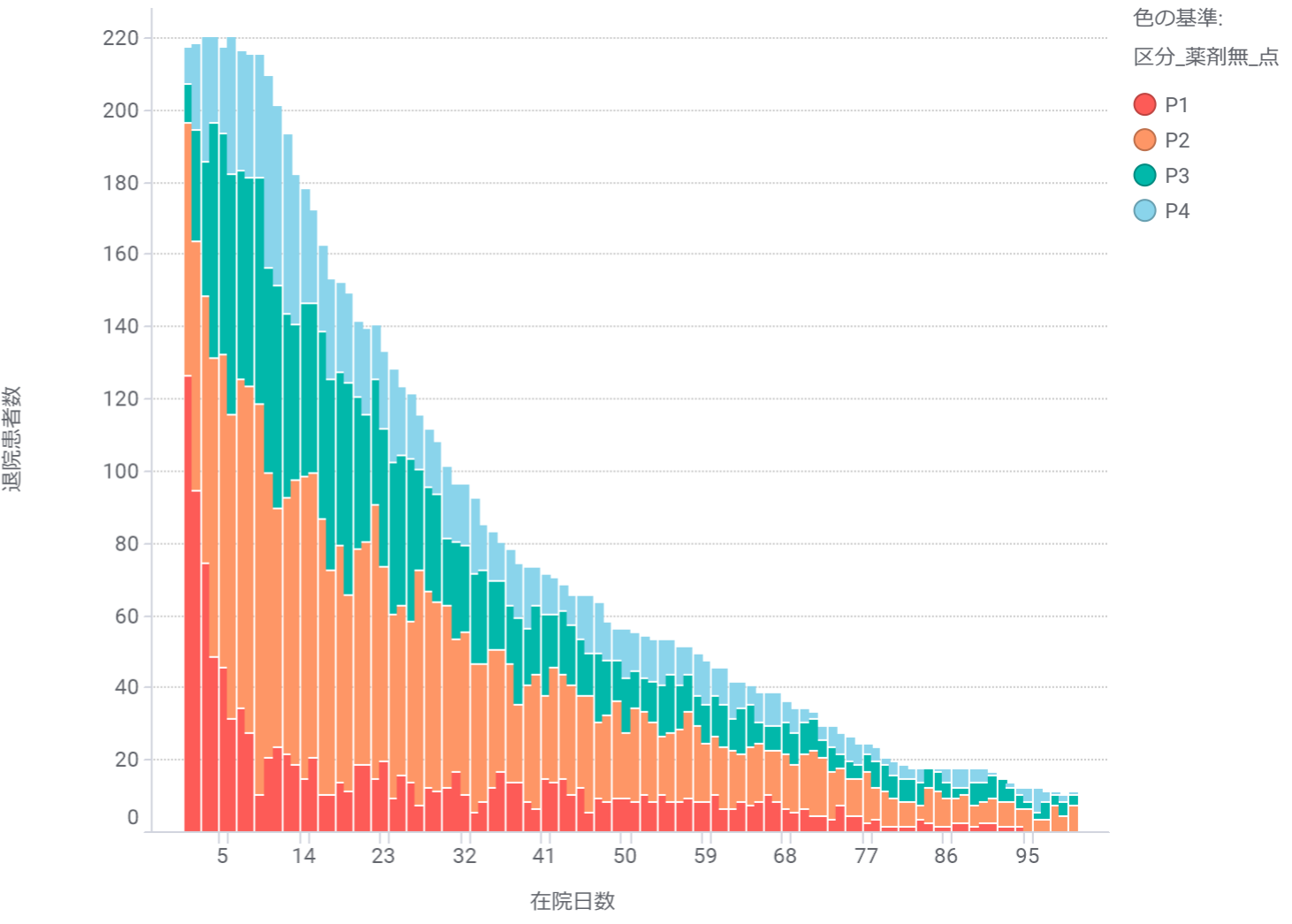
疾病別医療資源投入量の分布

2019

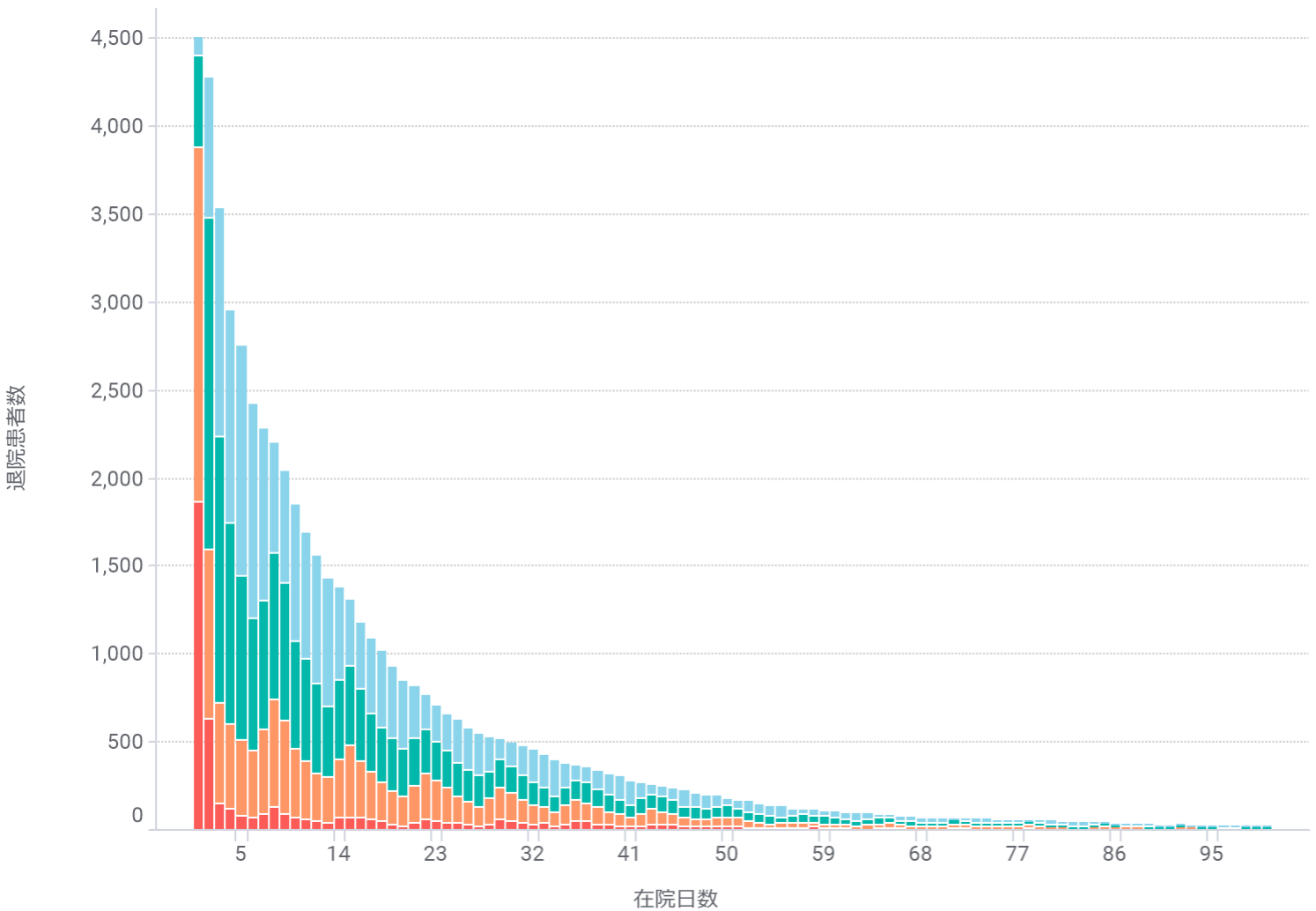
手術なし



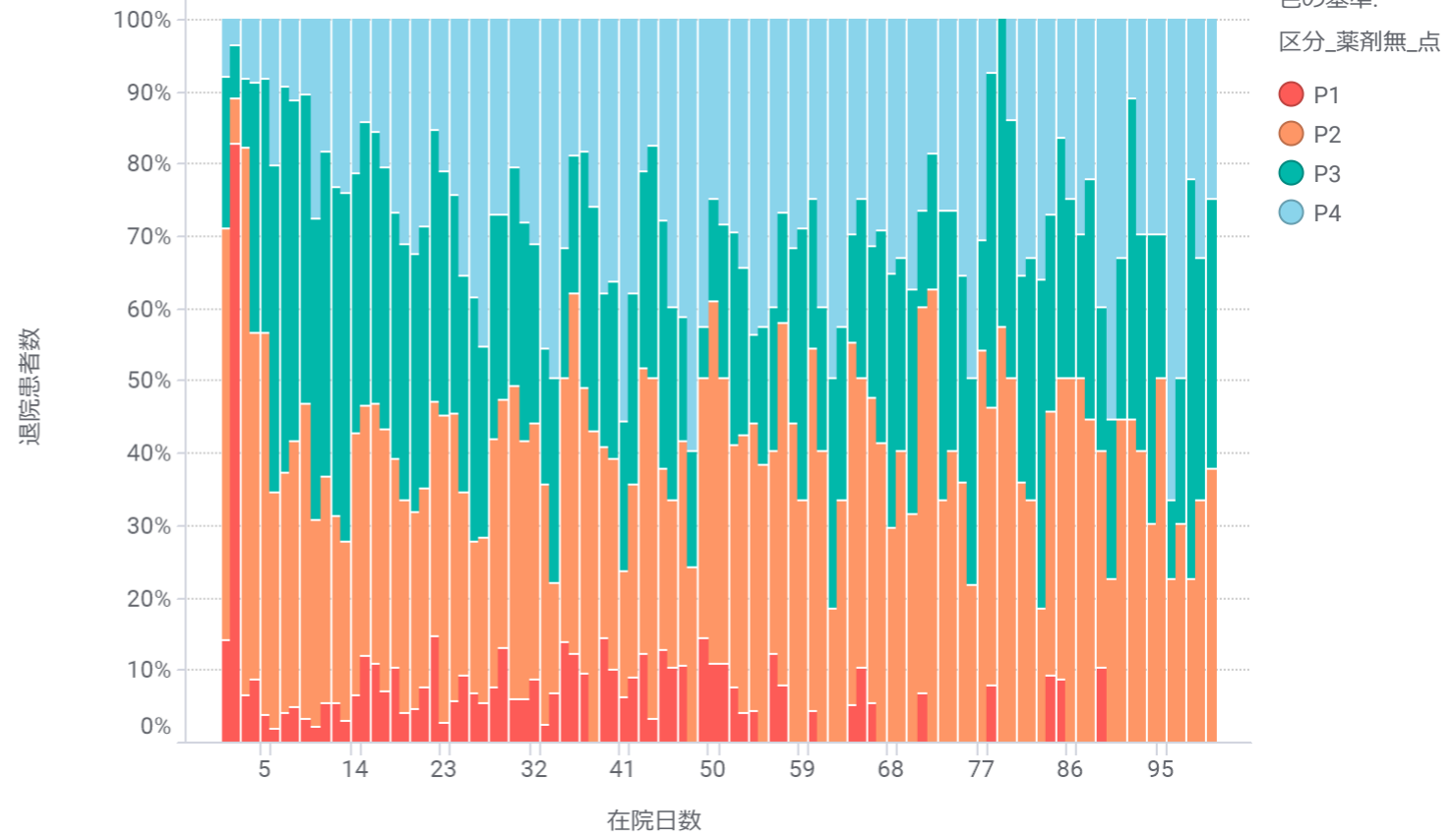
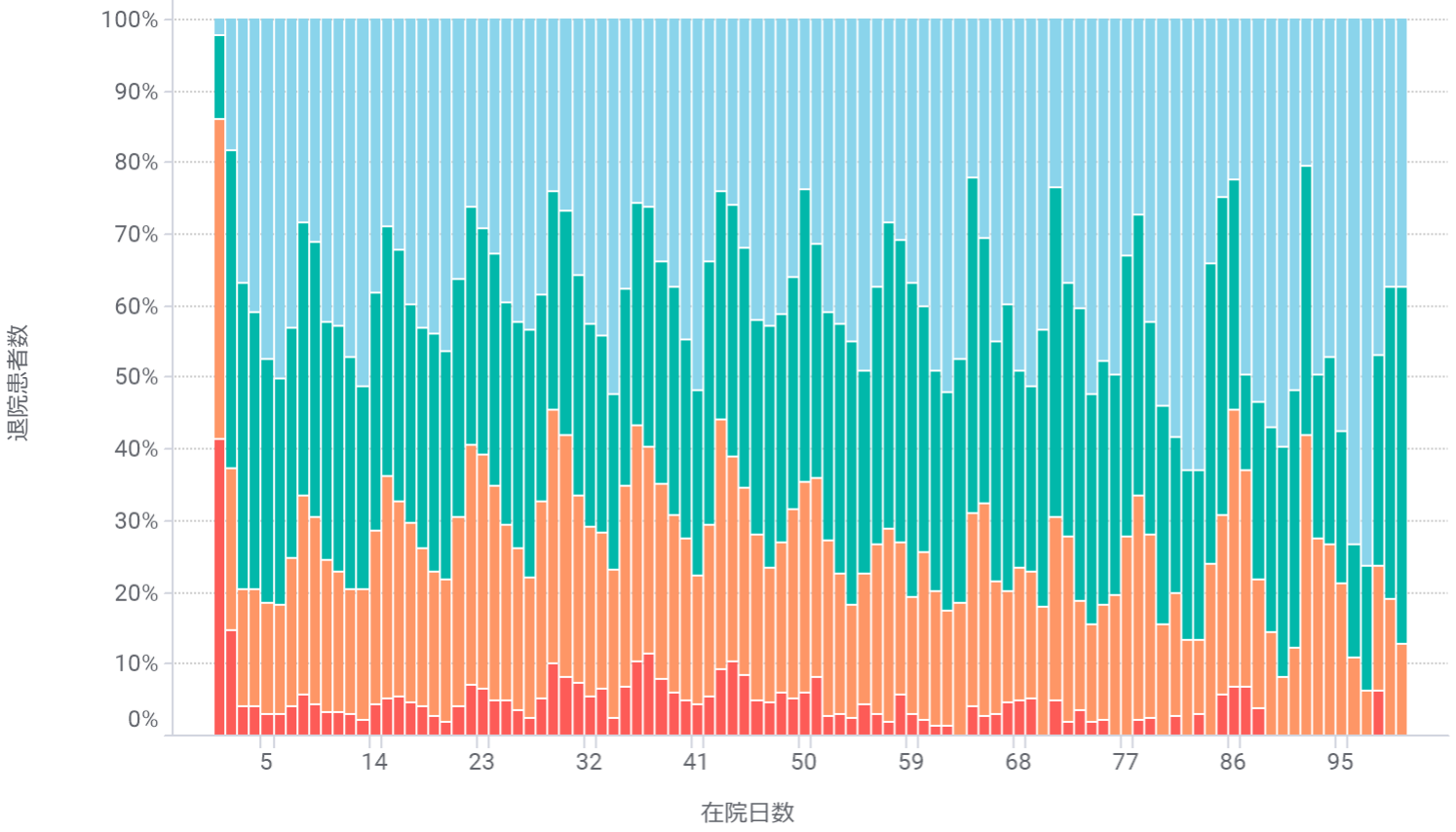
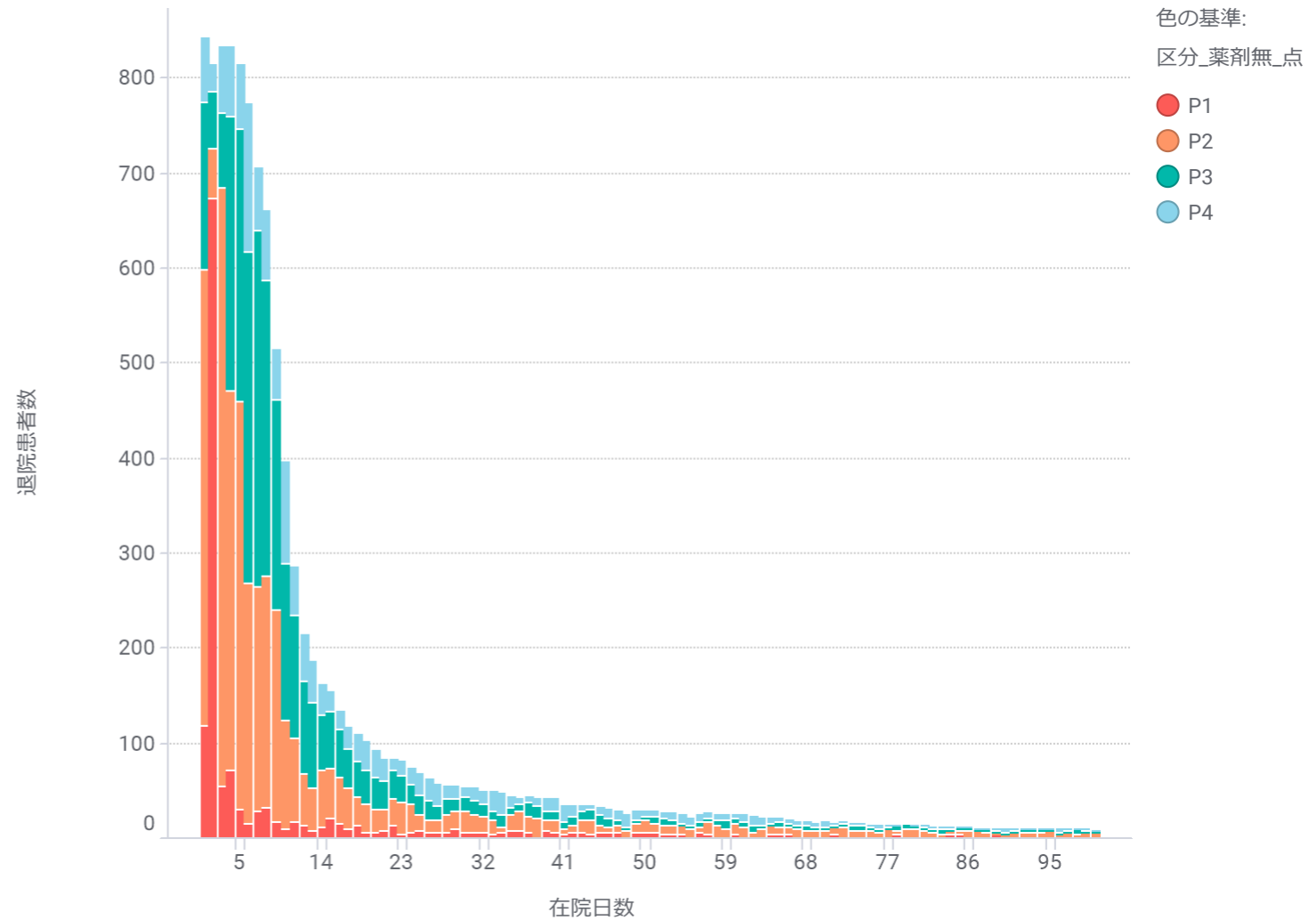
手術あり



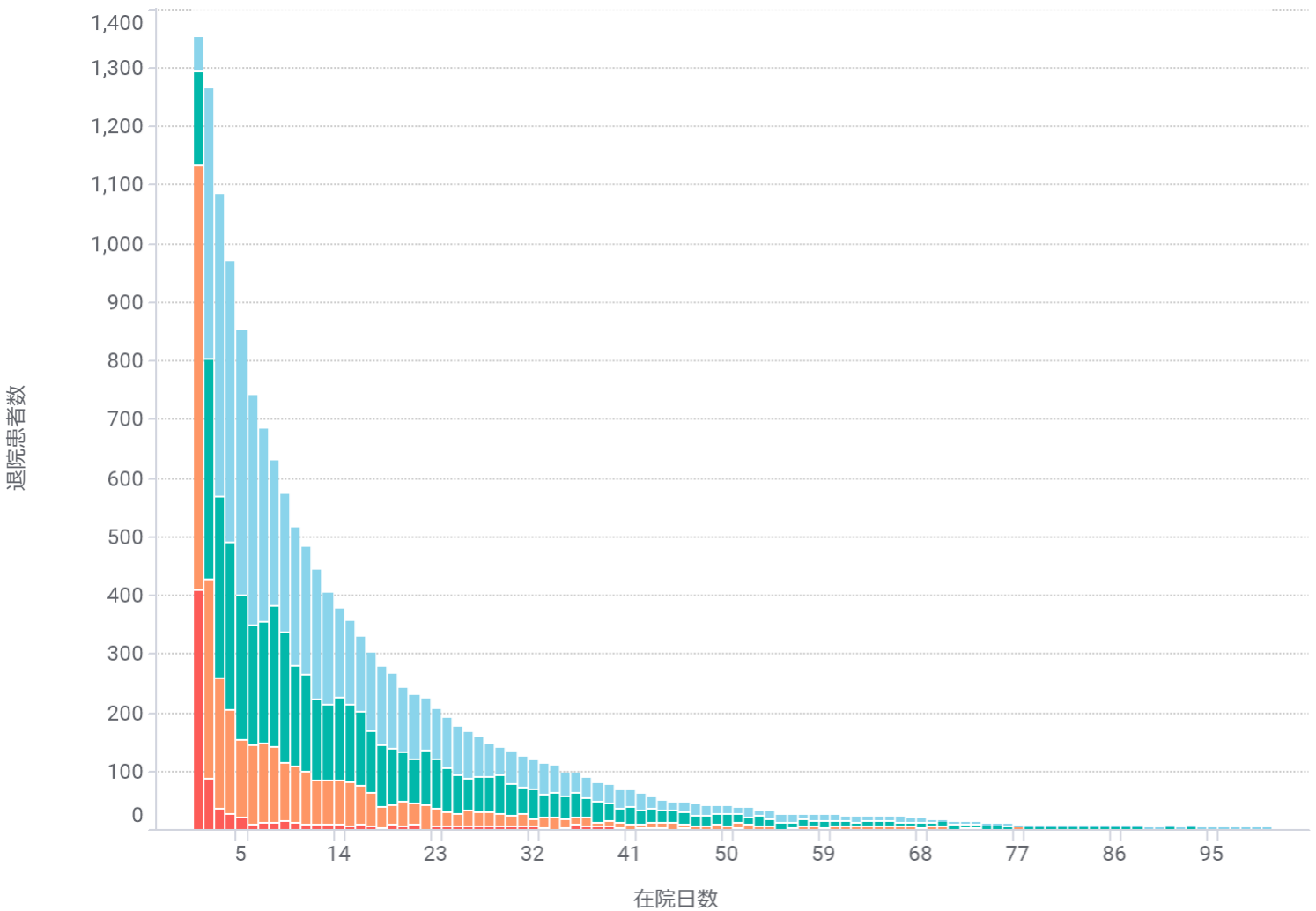
手術なし



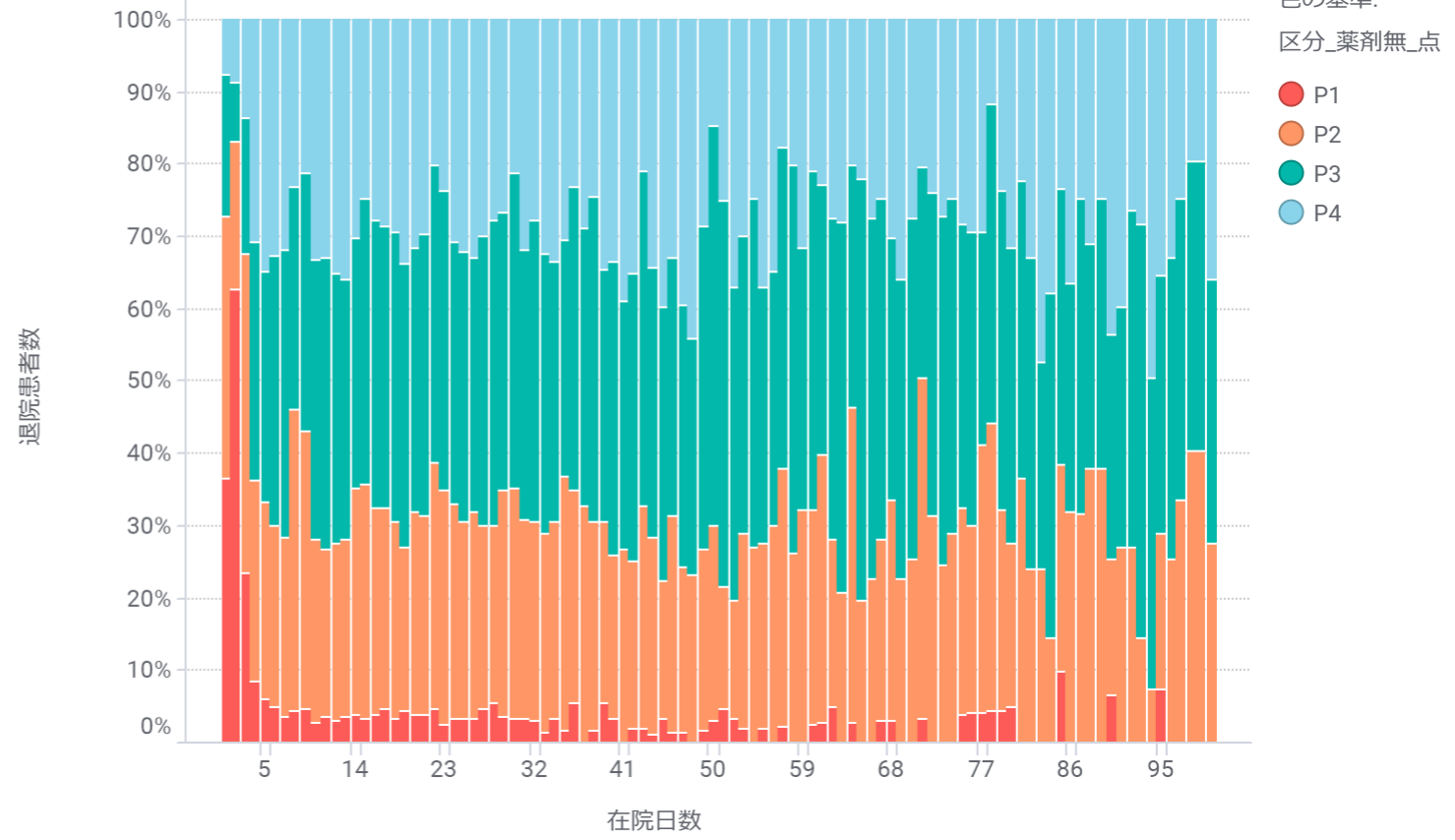
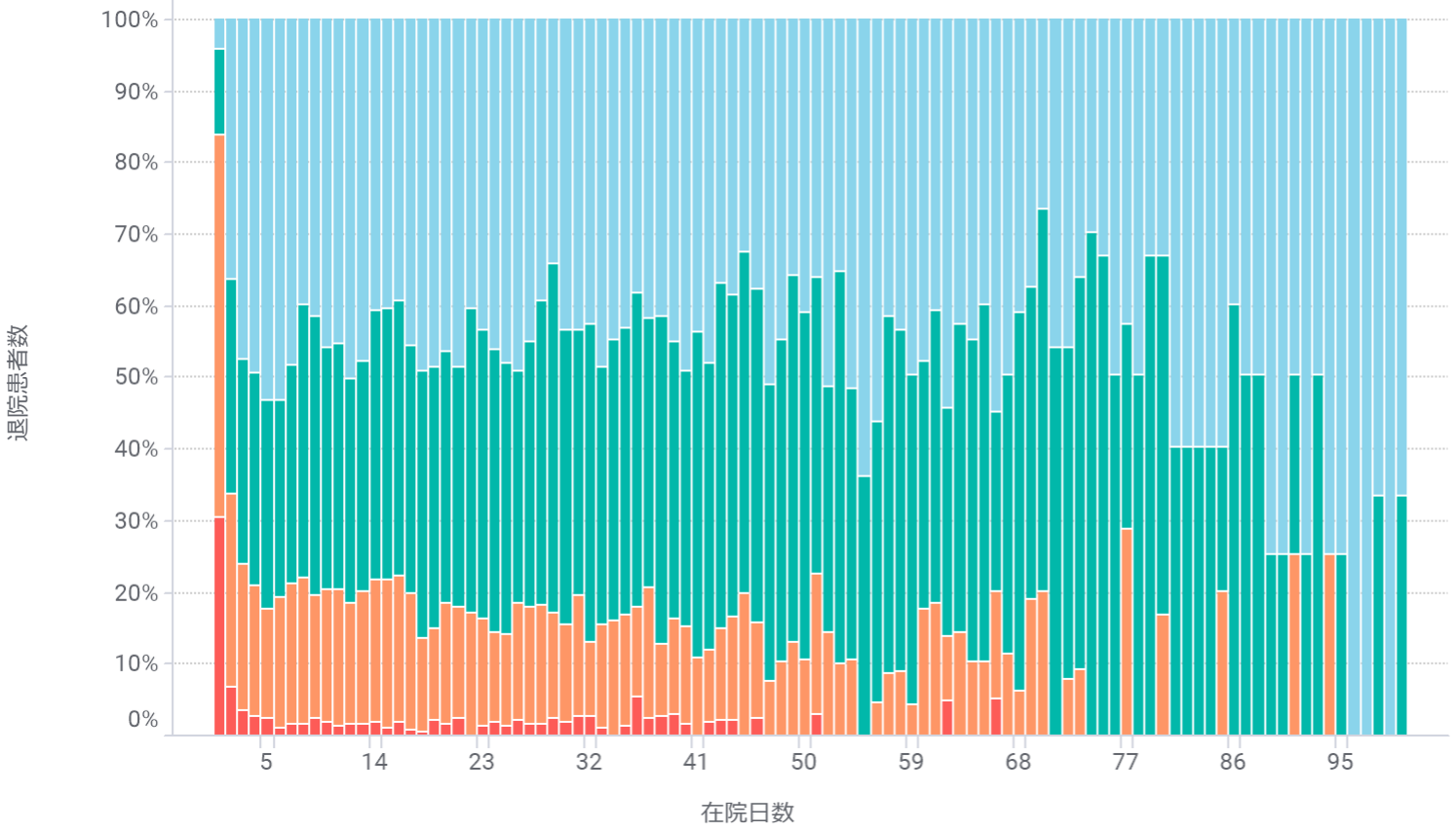
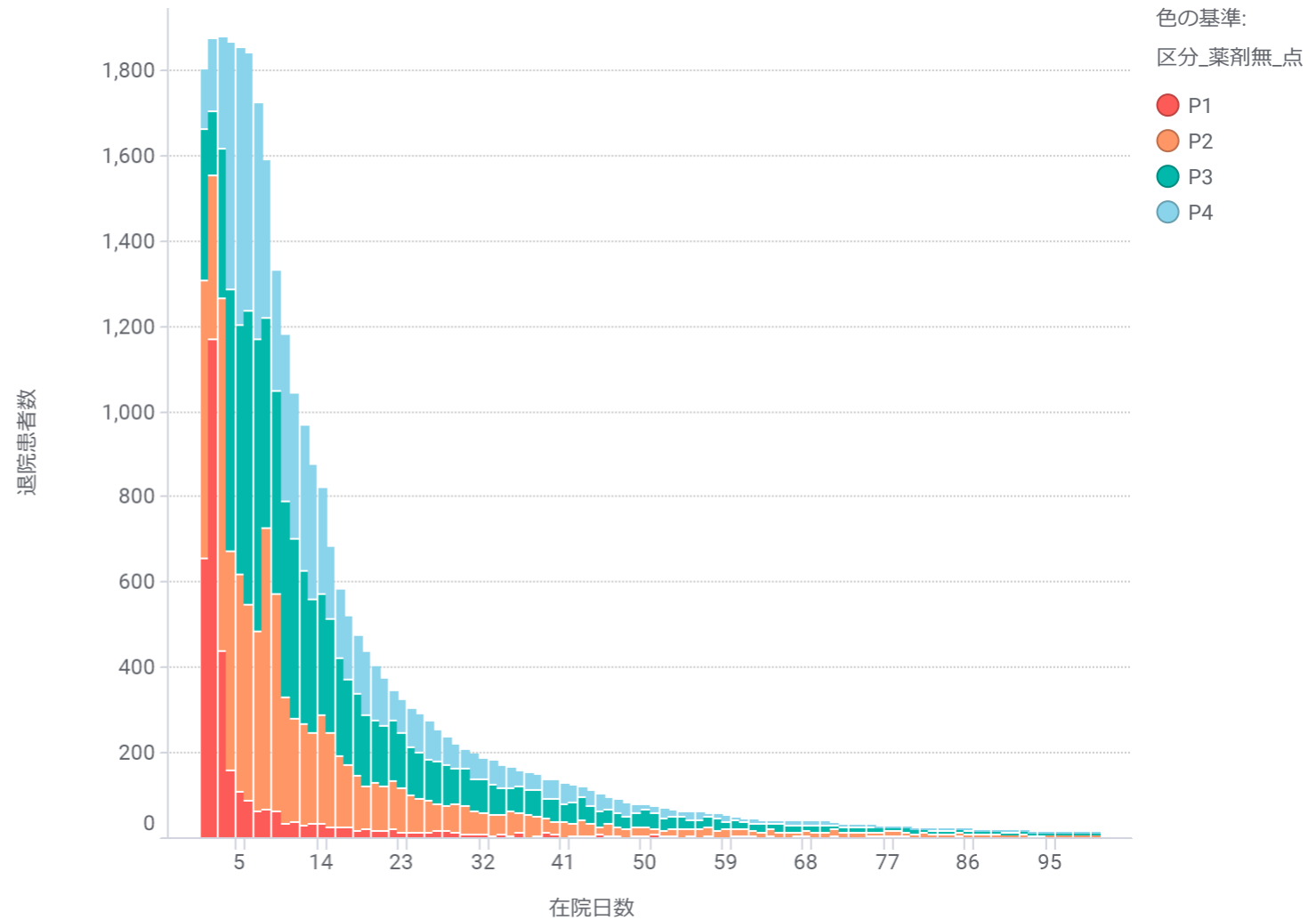
手術あり



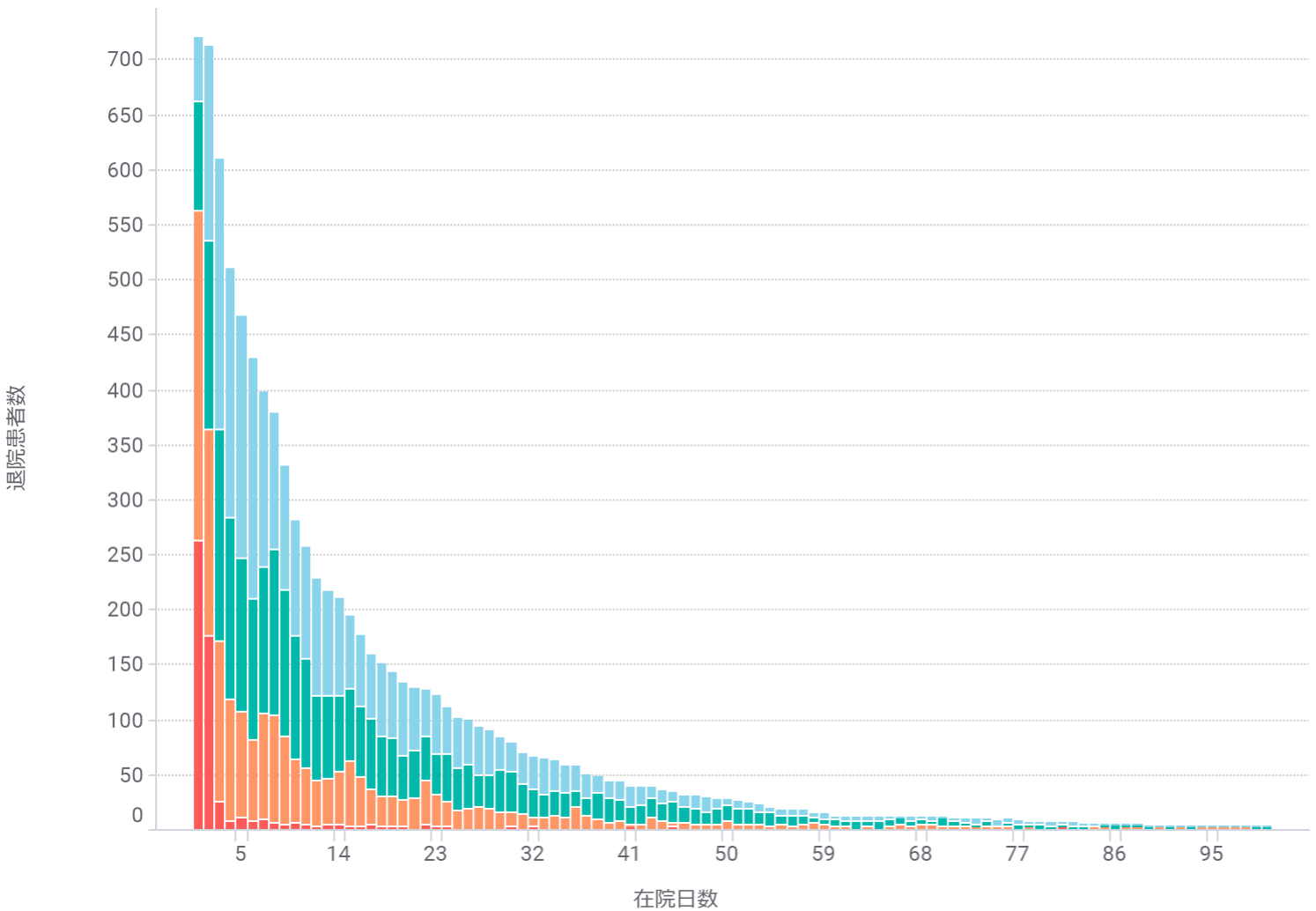
手術なし



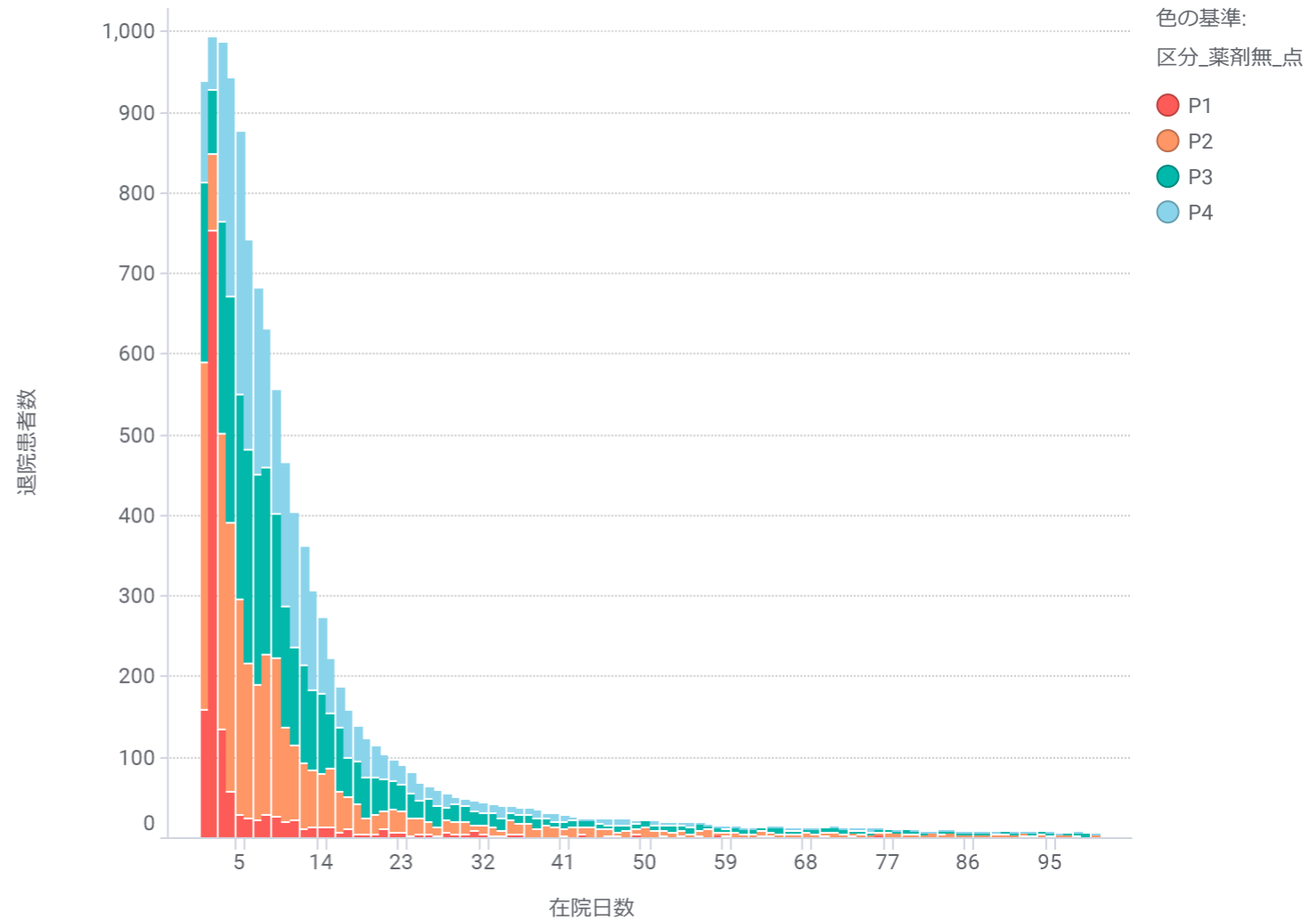
手術あり



手術なし



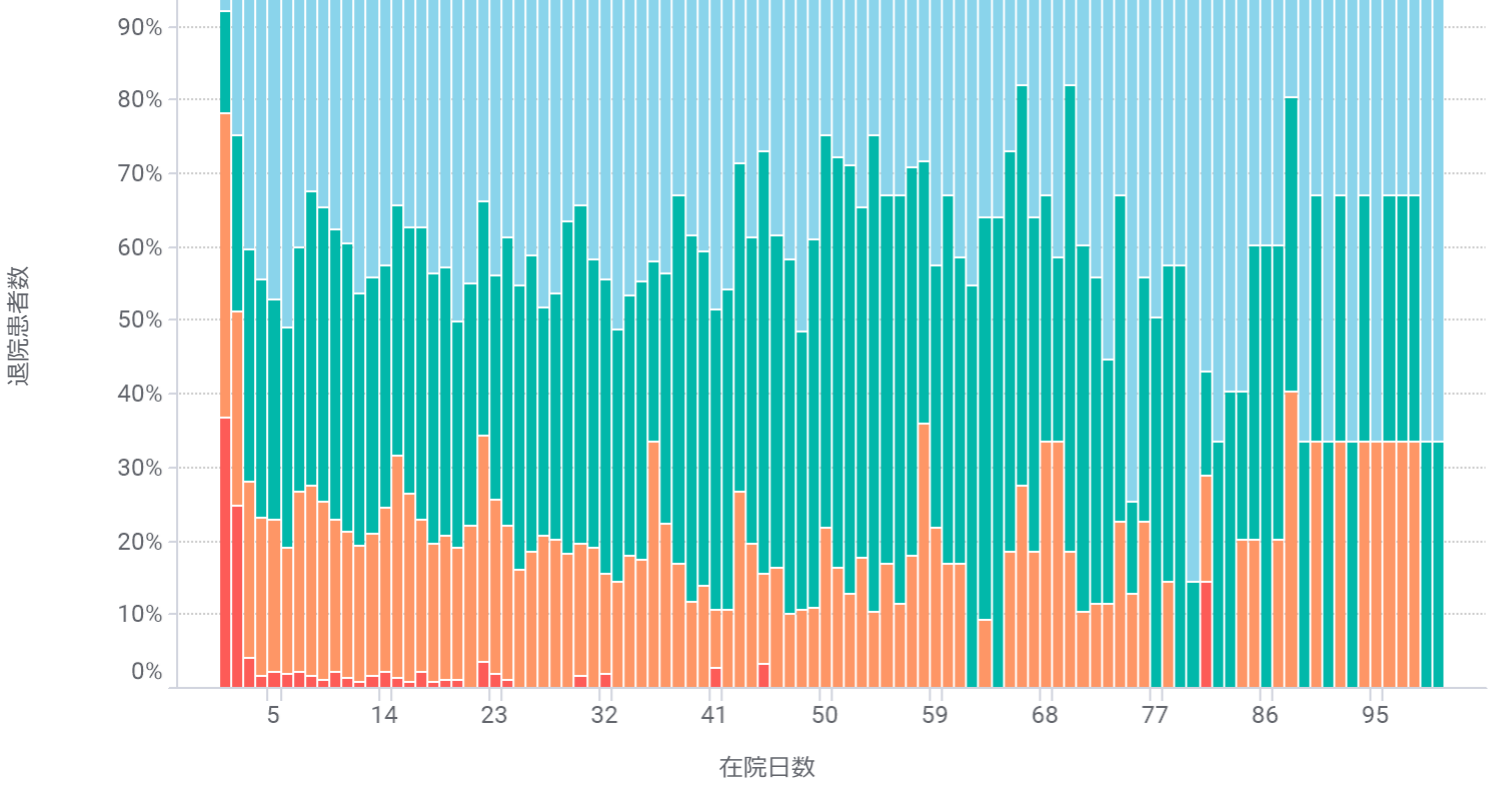
手術あり



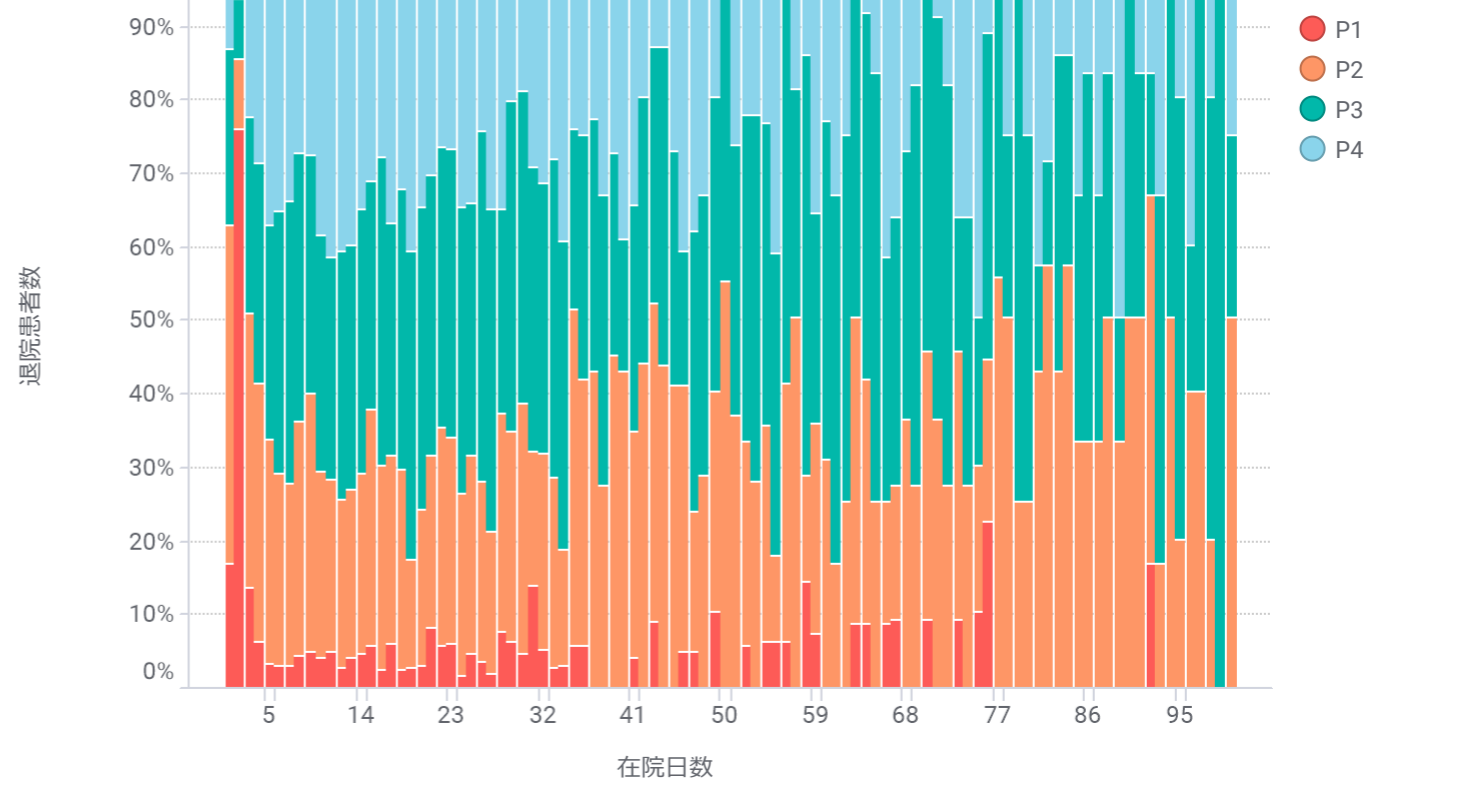
色の基準:
区分_薬剤無_点

- P1
- P2
- P3
- P4

手術なし



手術あり

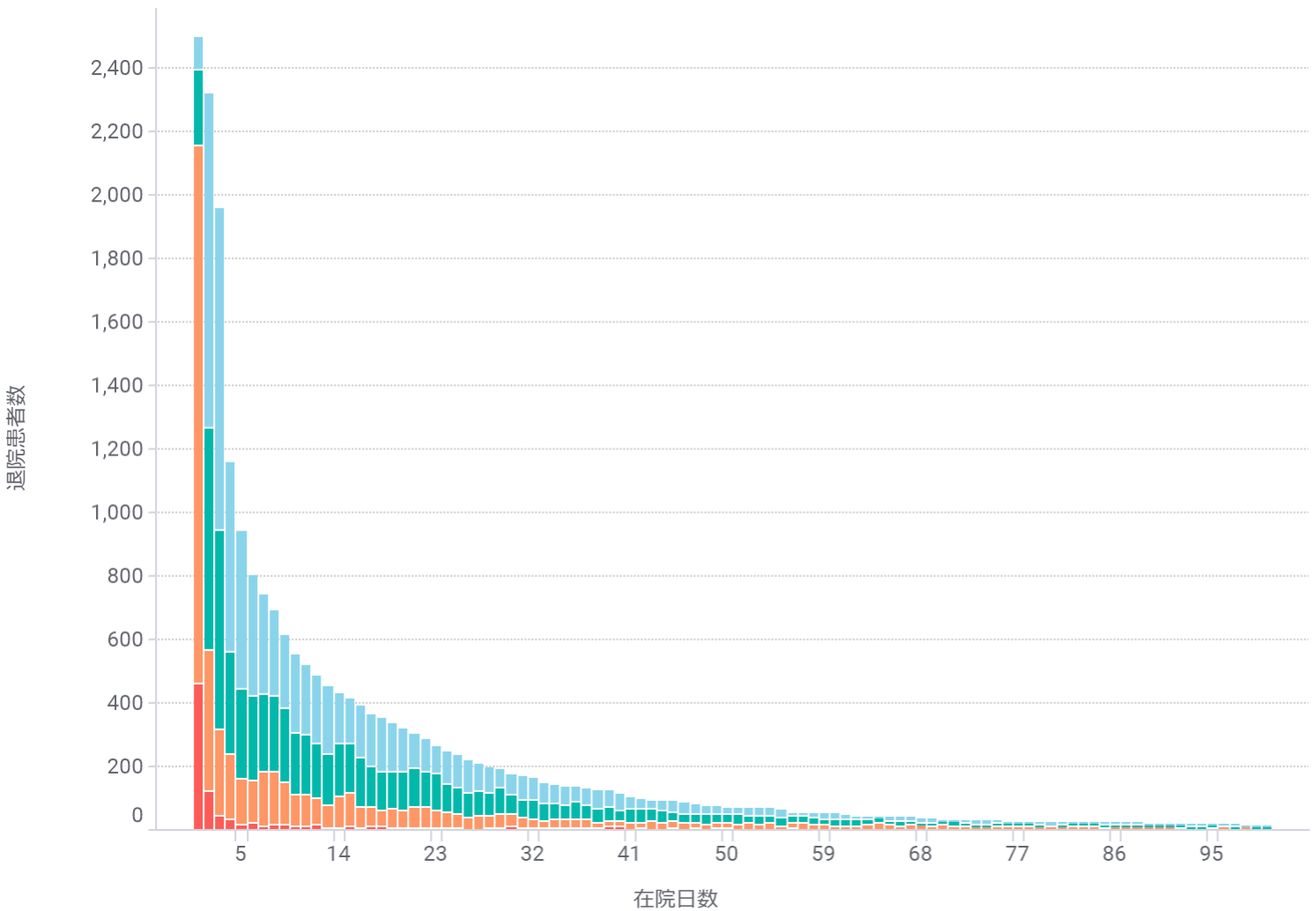


色の基準:
区分_薬剤無_点

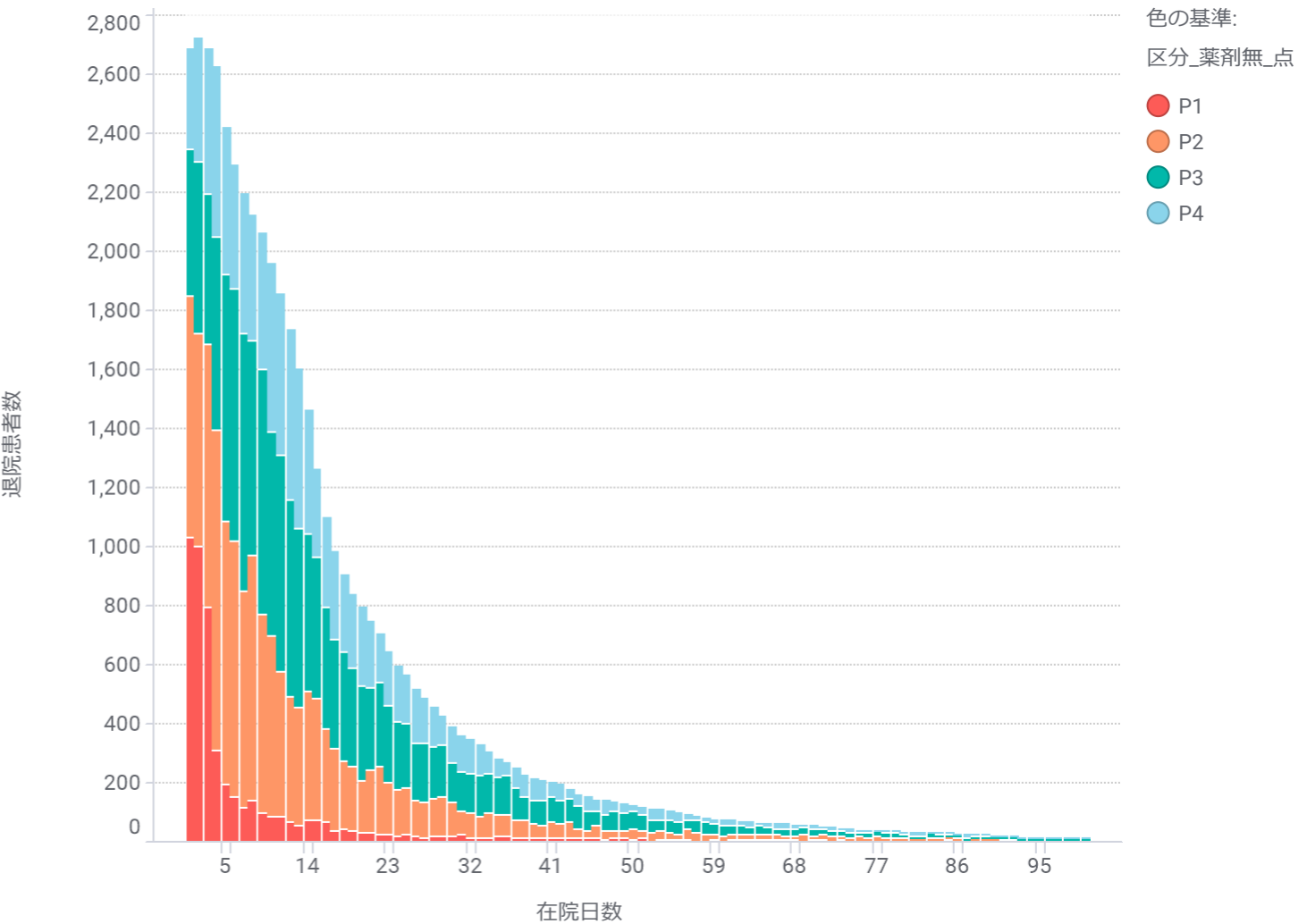
- P1
- P2
- P3
- P4

大腸がん 060035:結腸（虫垂を含む）の悪性腫瘍、060040:直腸肛門（直腸S状部から肛門）の悪性腫瘍

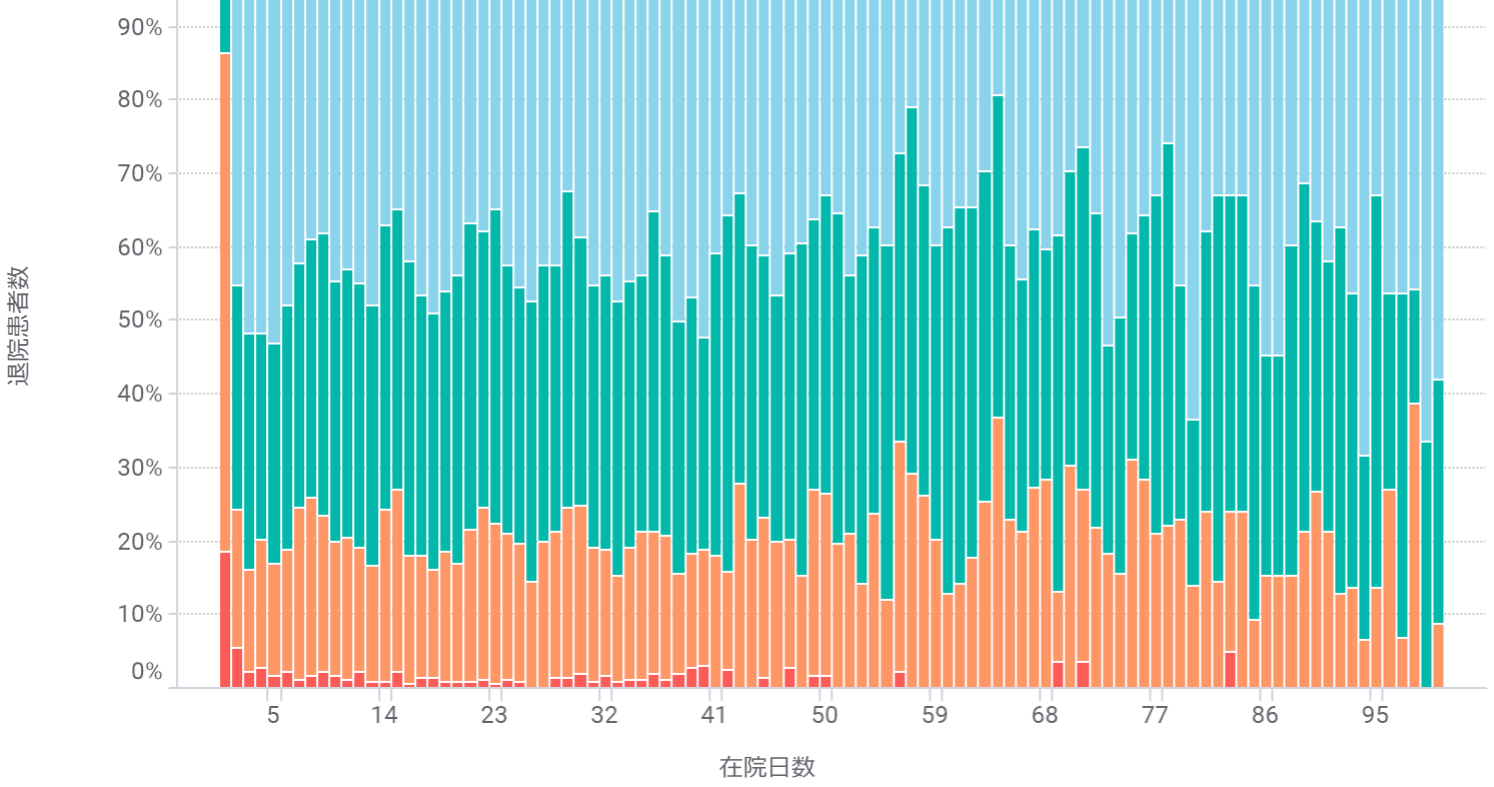
手術なし



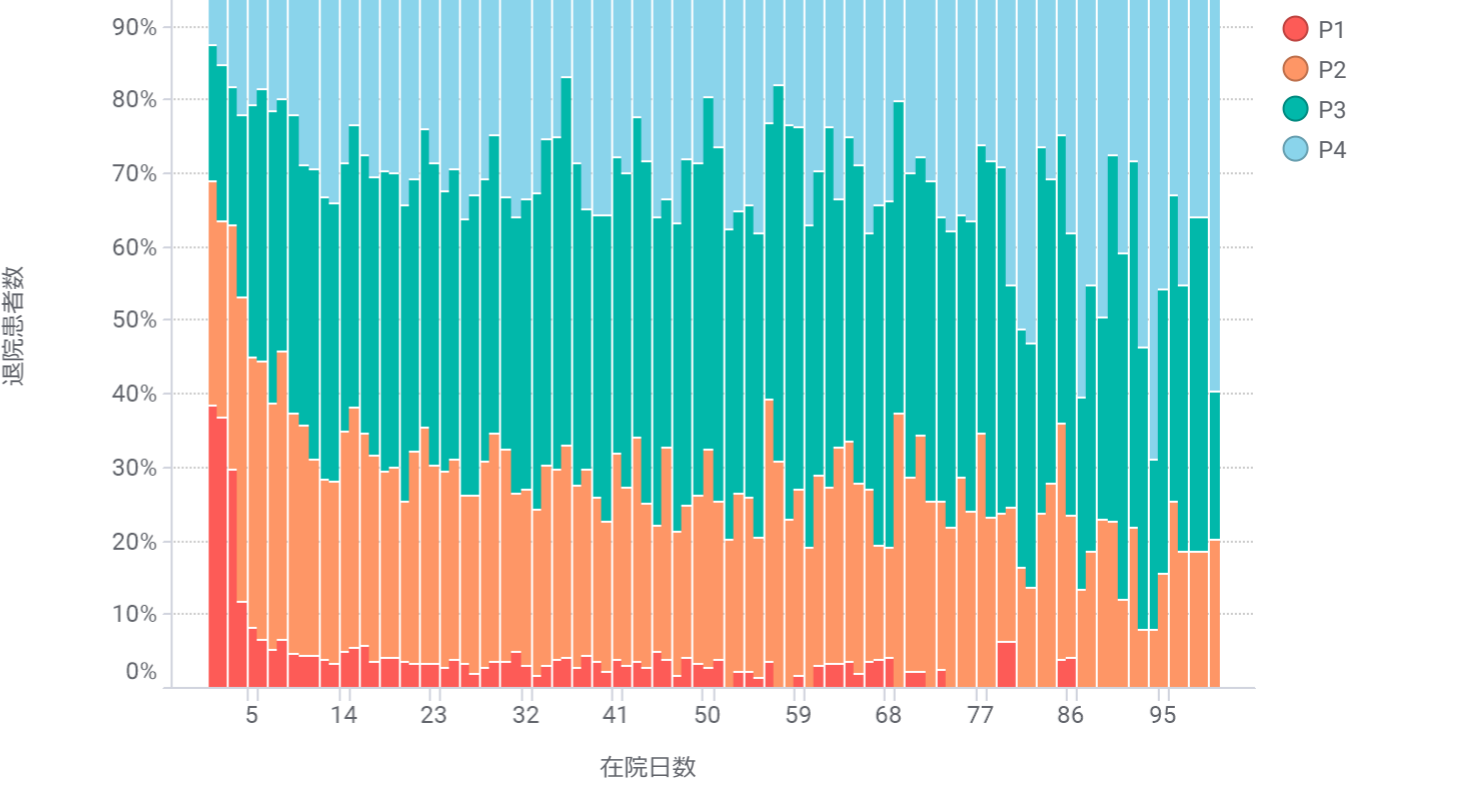
手術あり



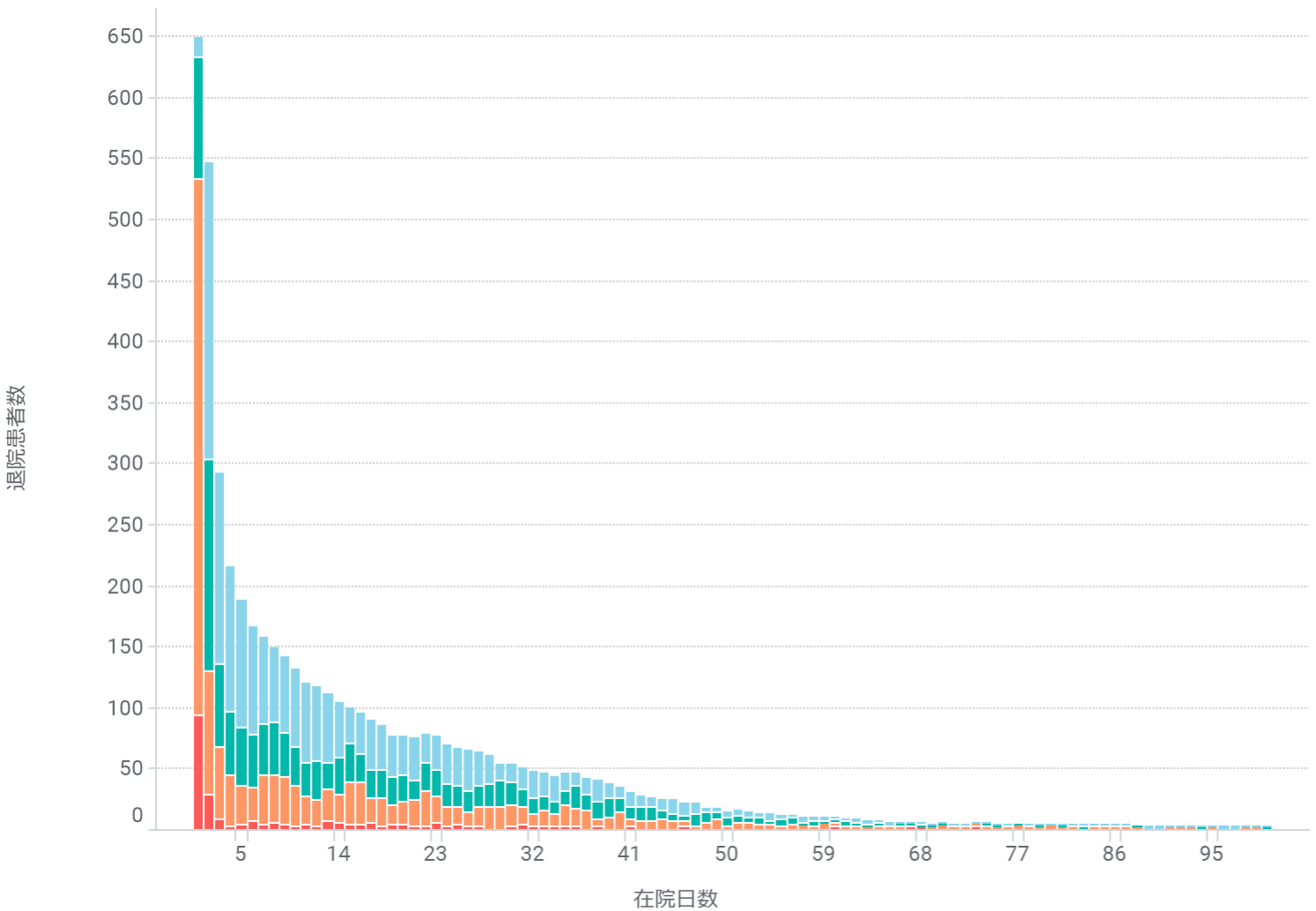
手術なし



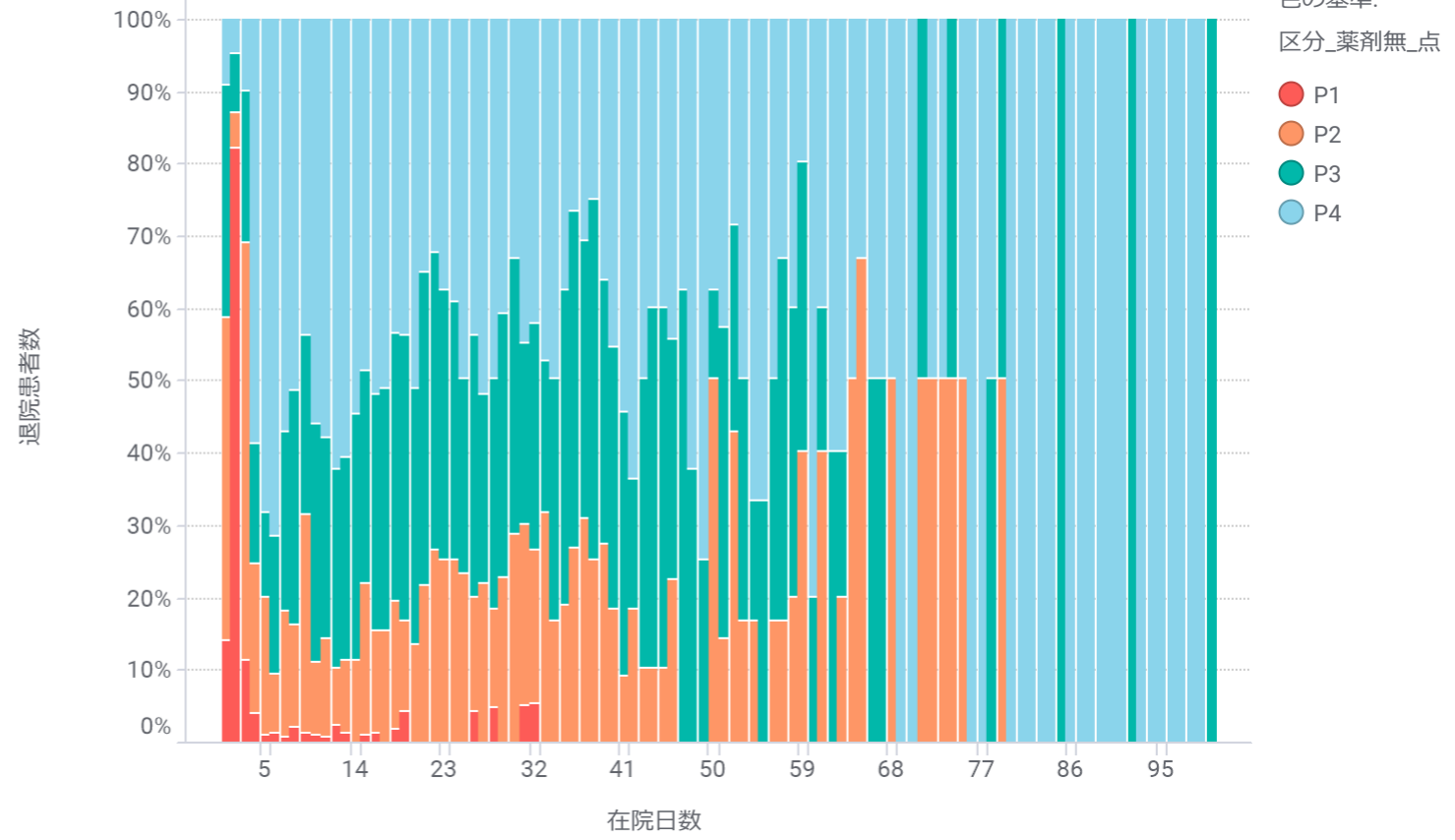
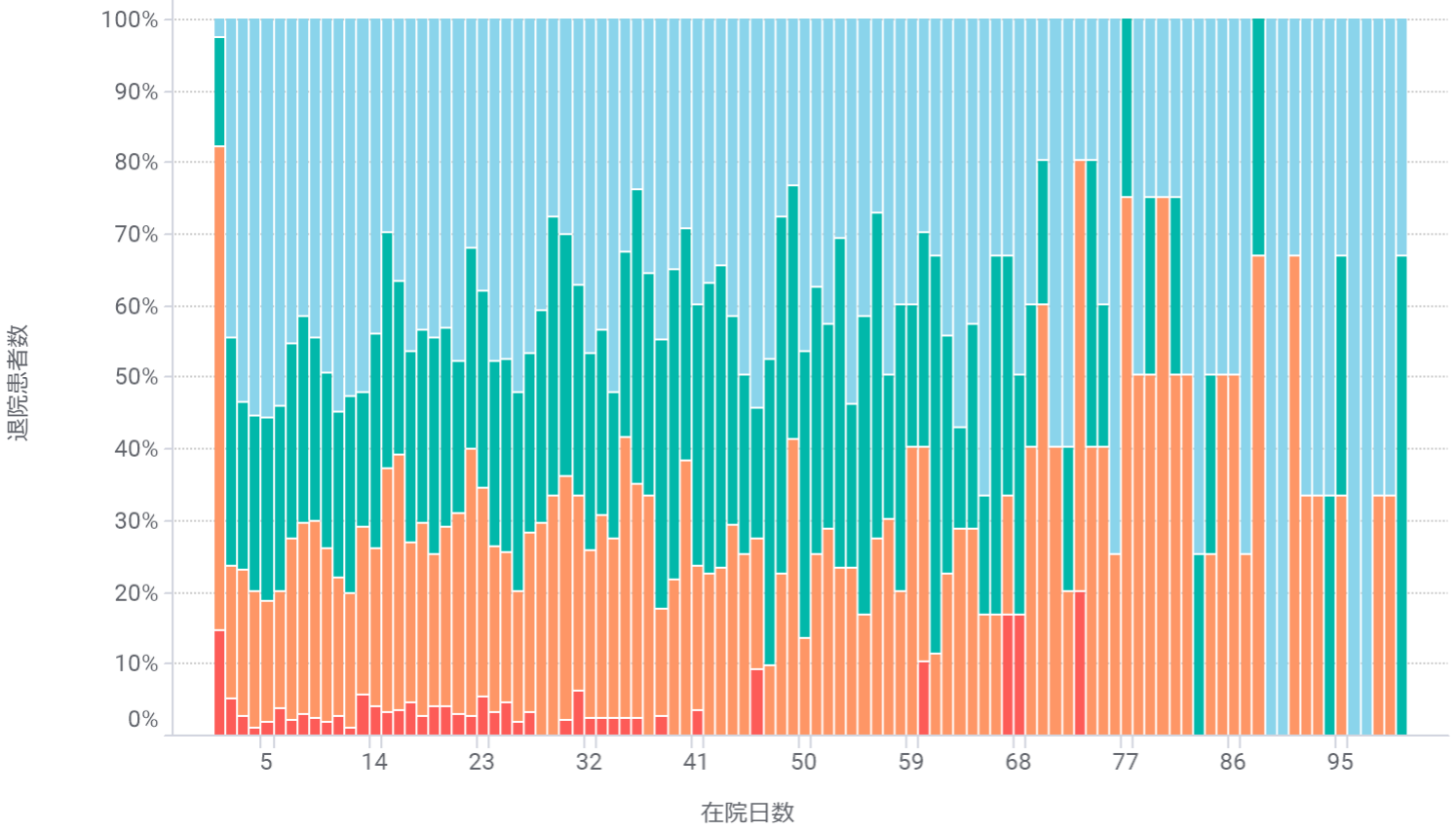
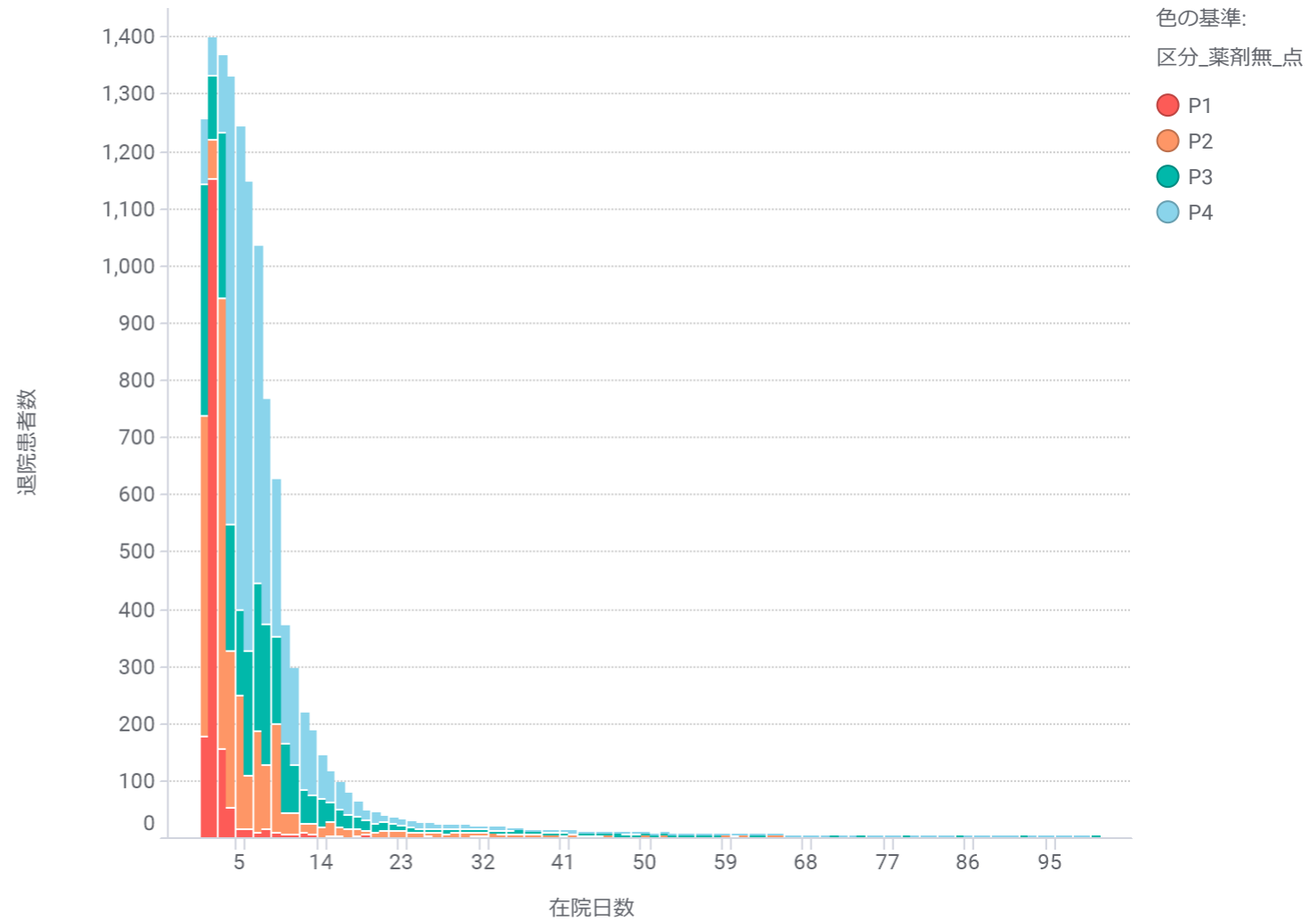
手術あり



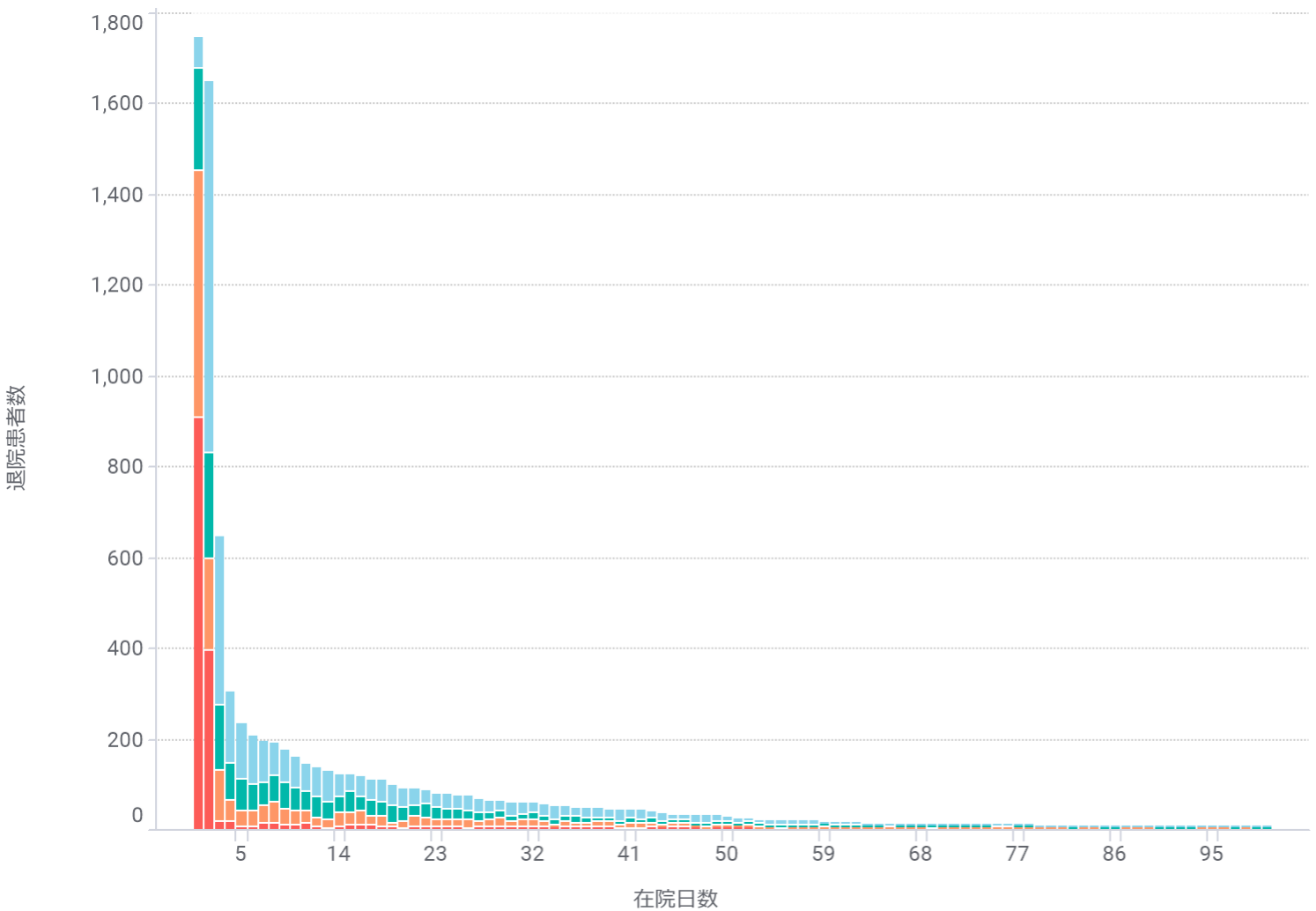
手術なし



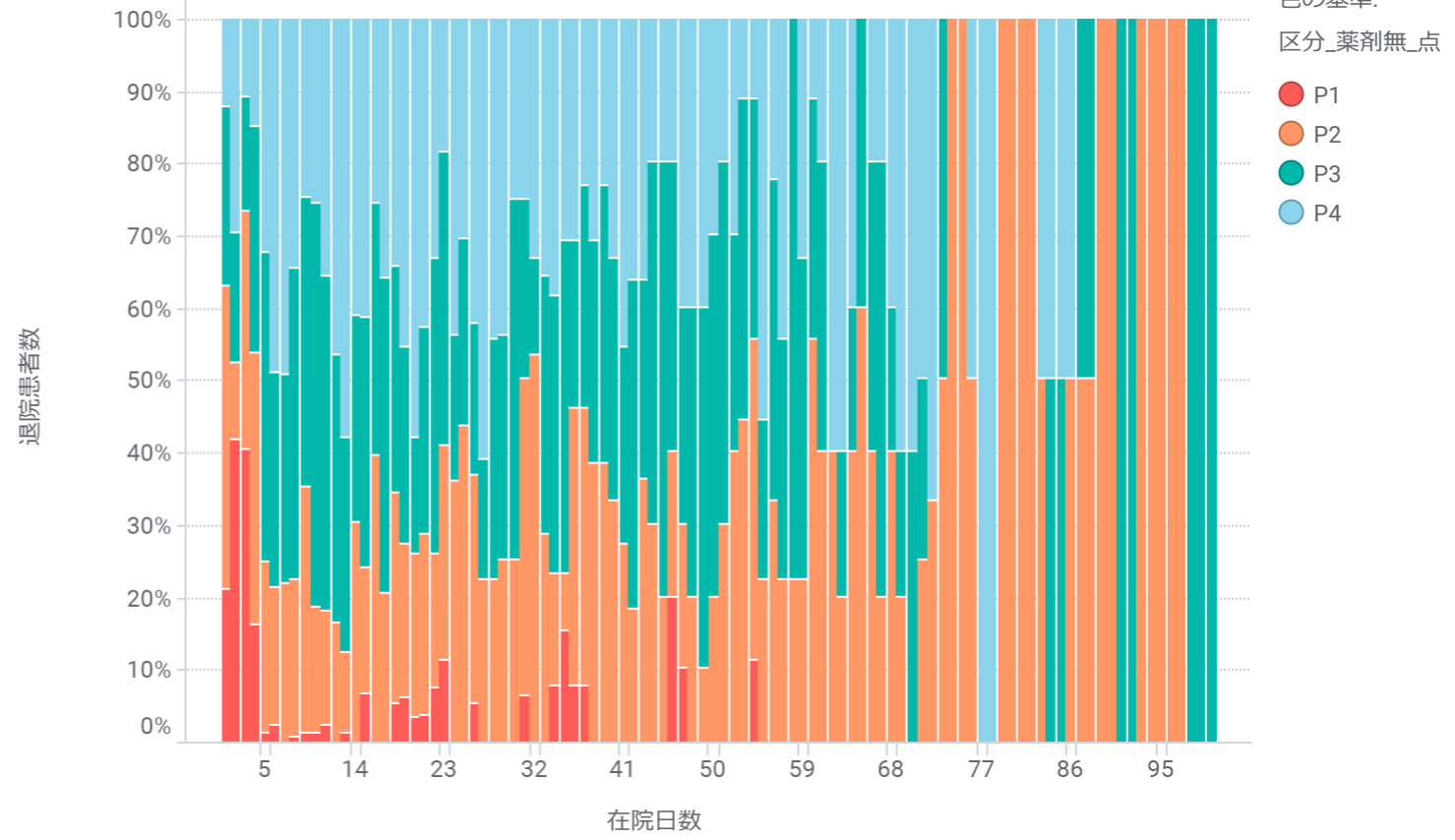
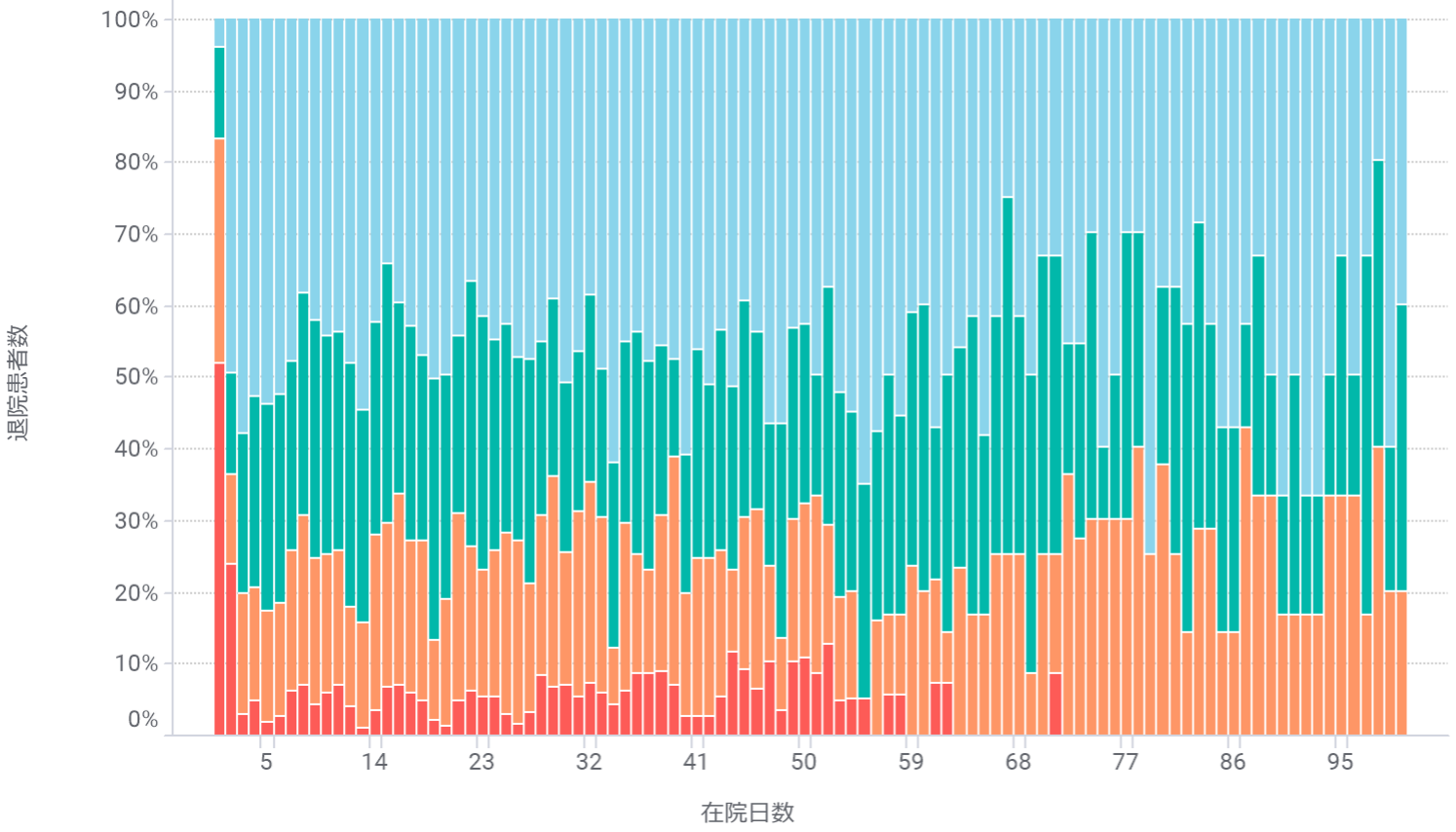
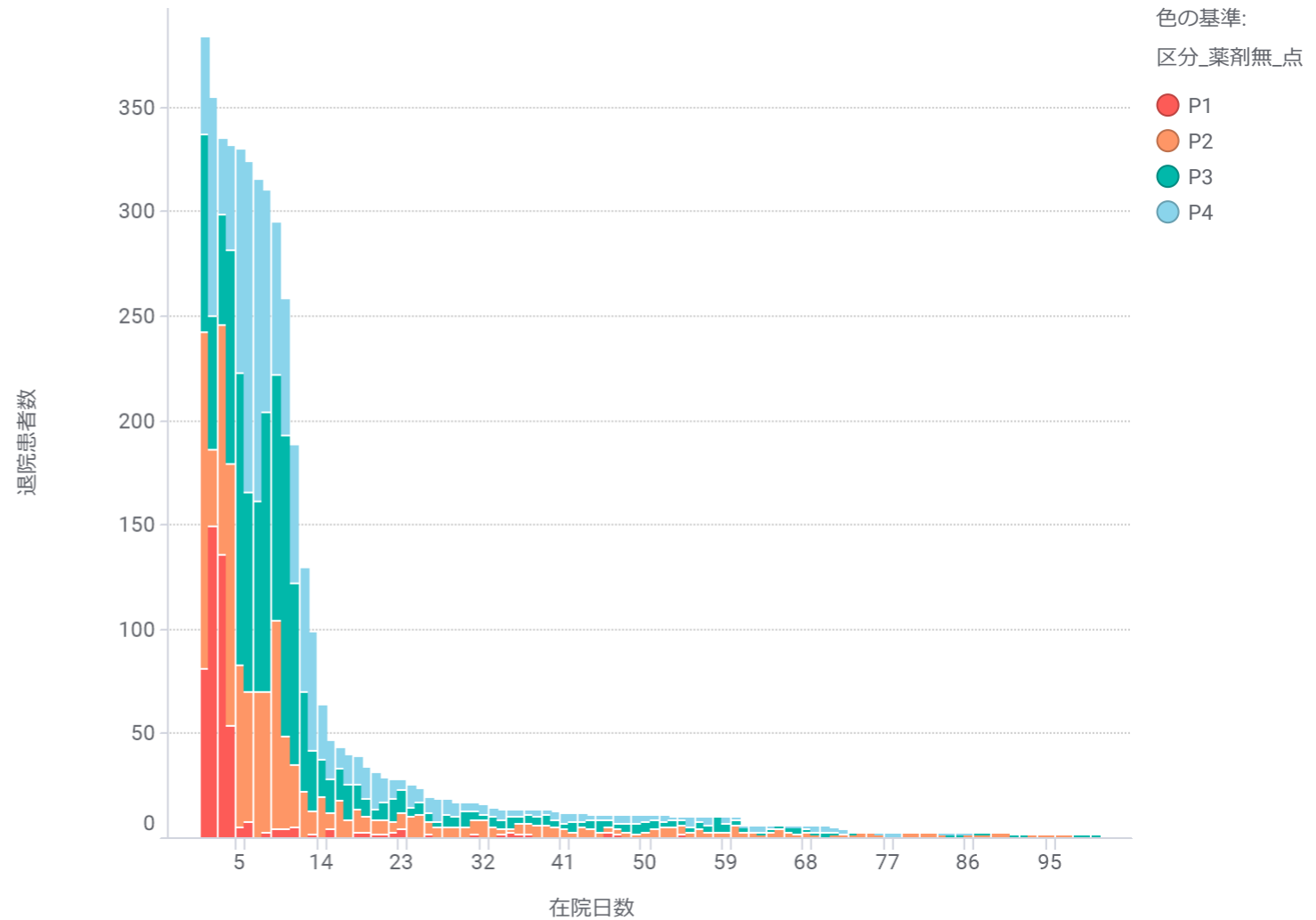
手術あり



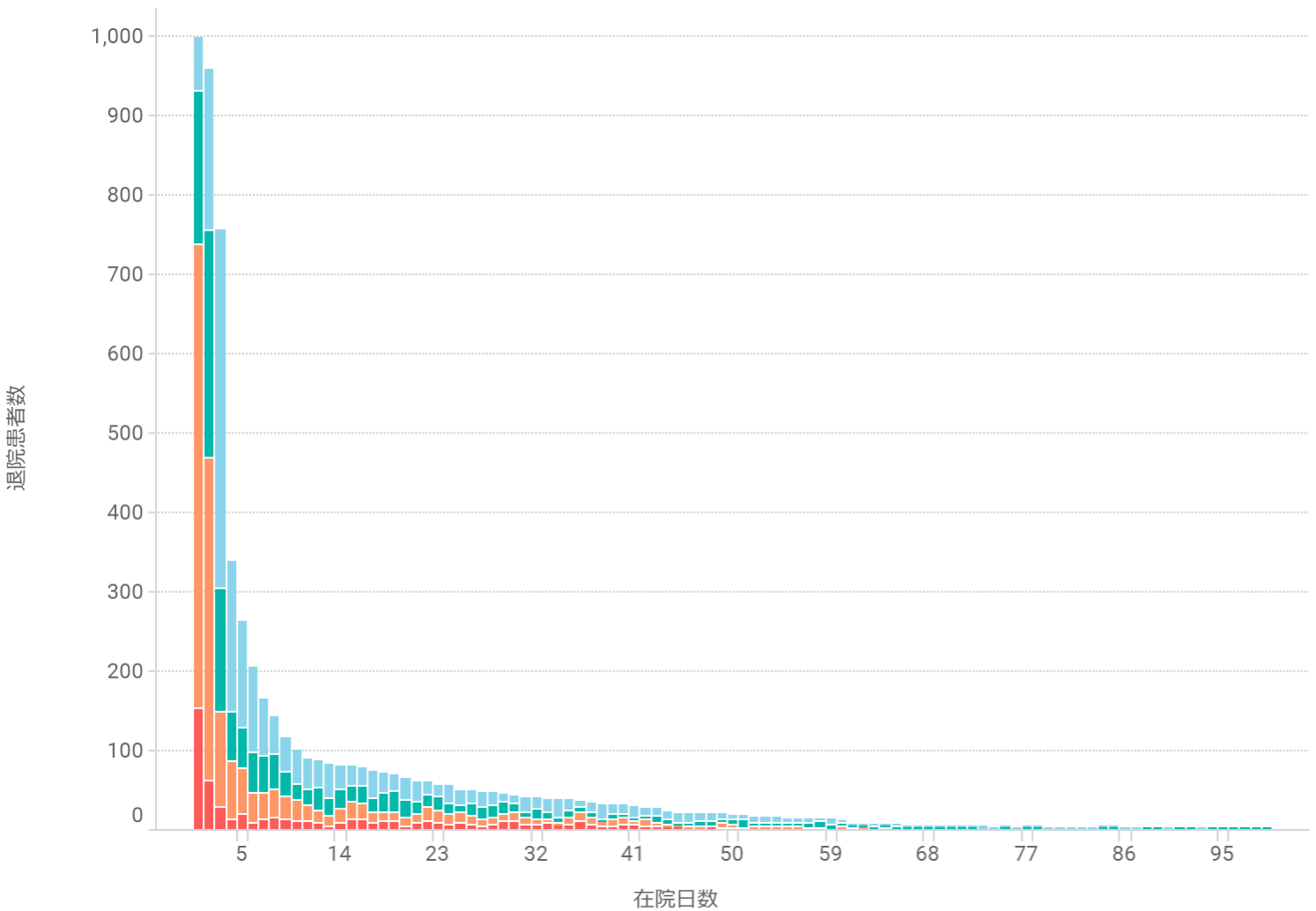
手術なし



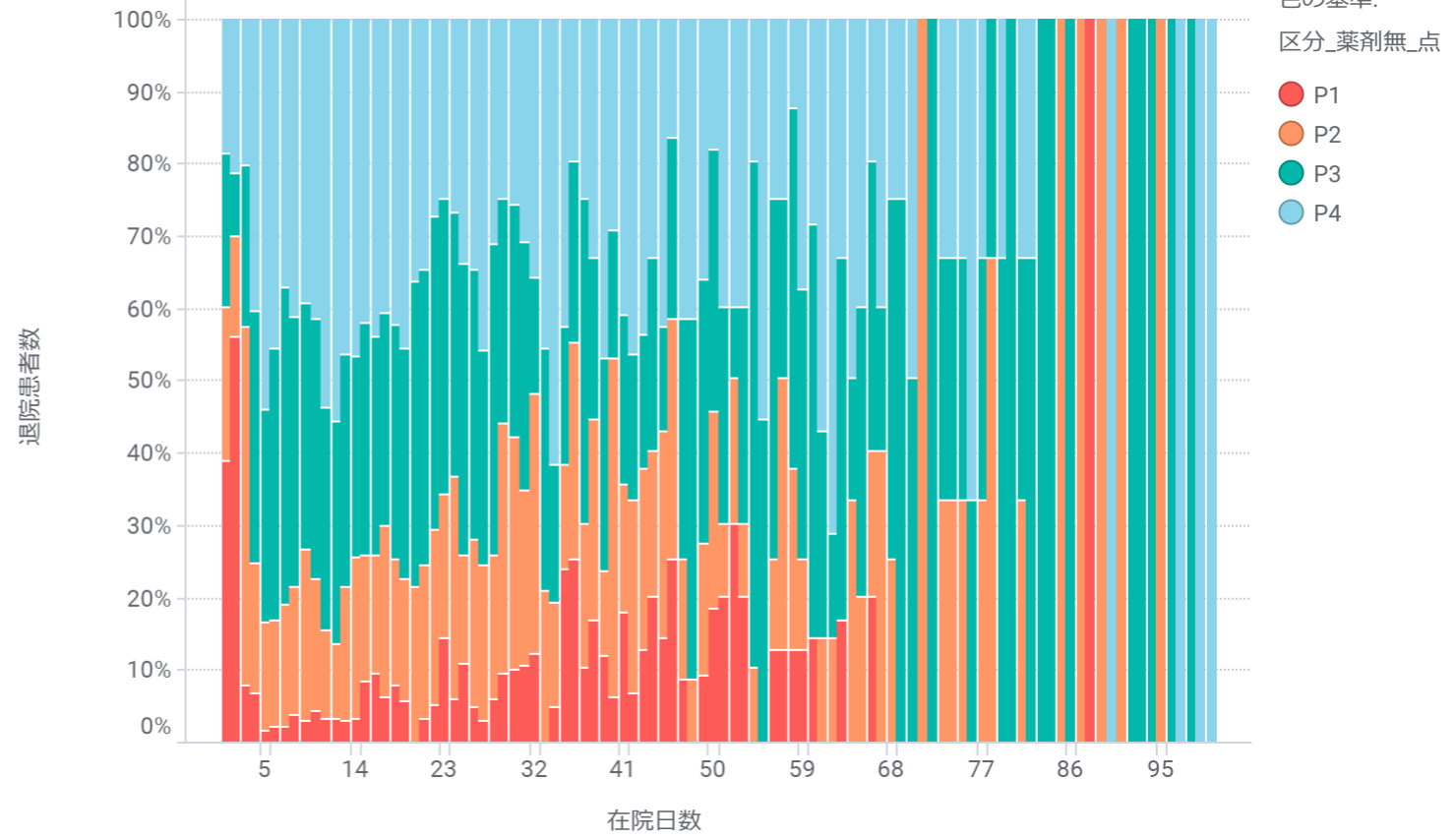
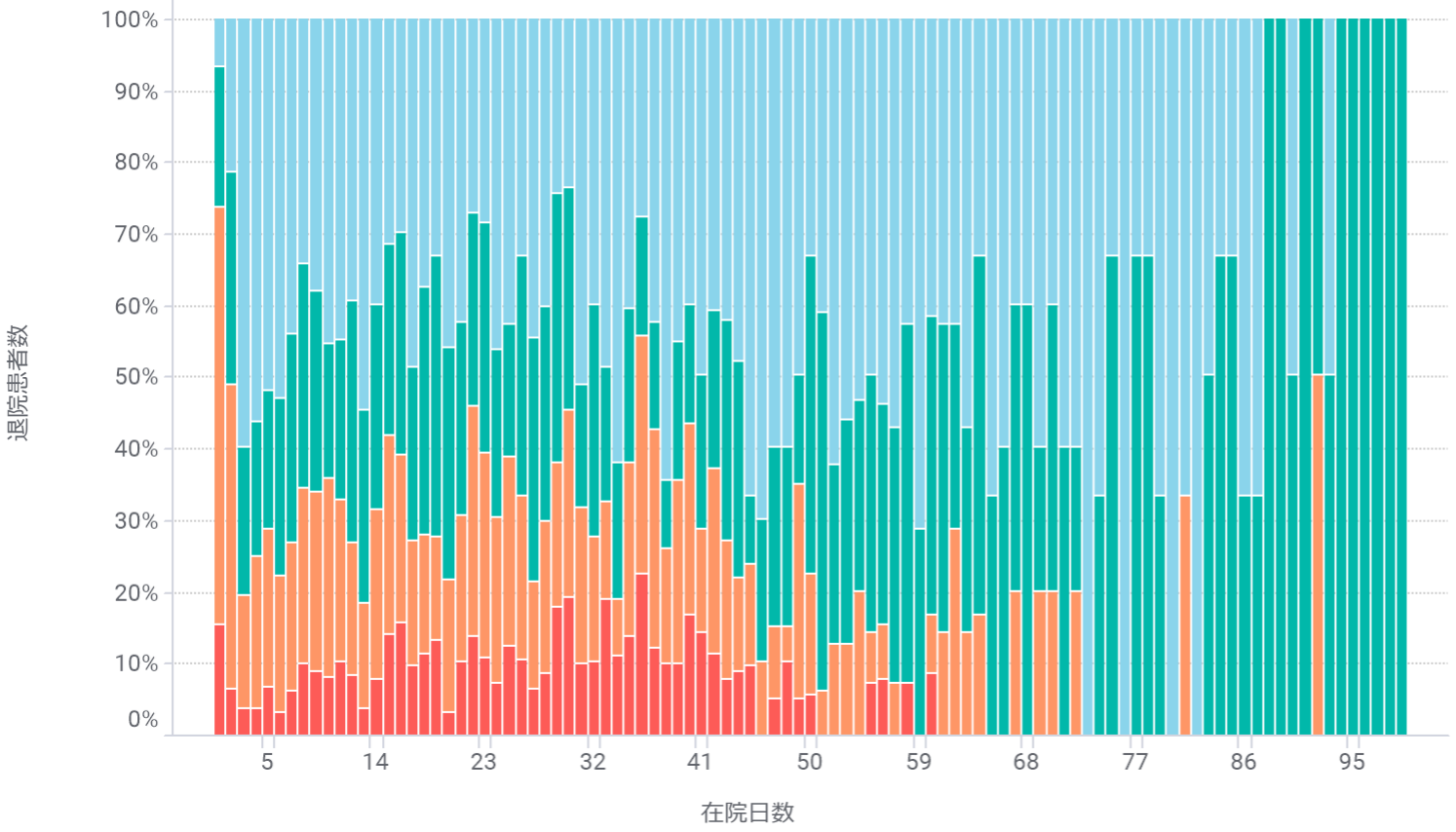
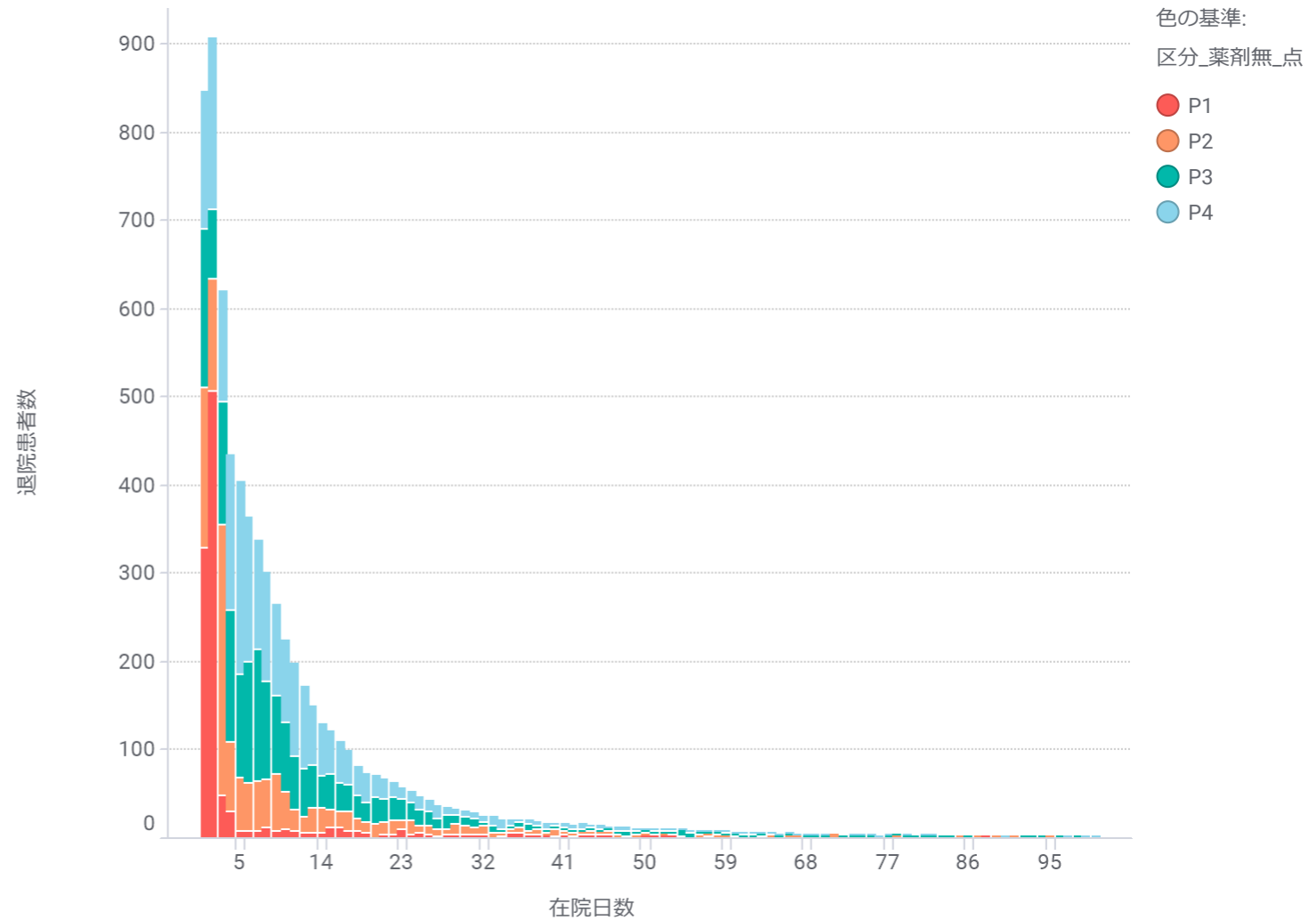
手術あり



手術なし

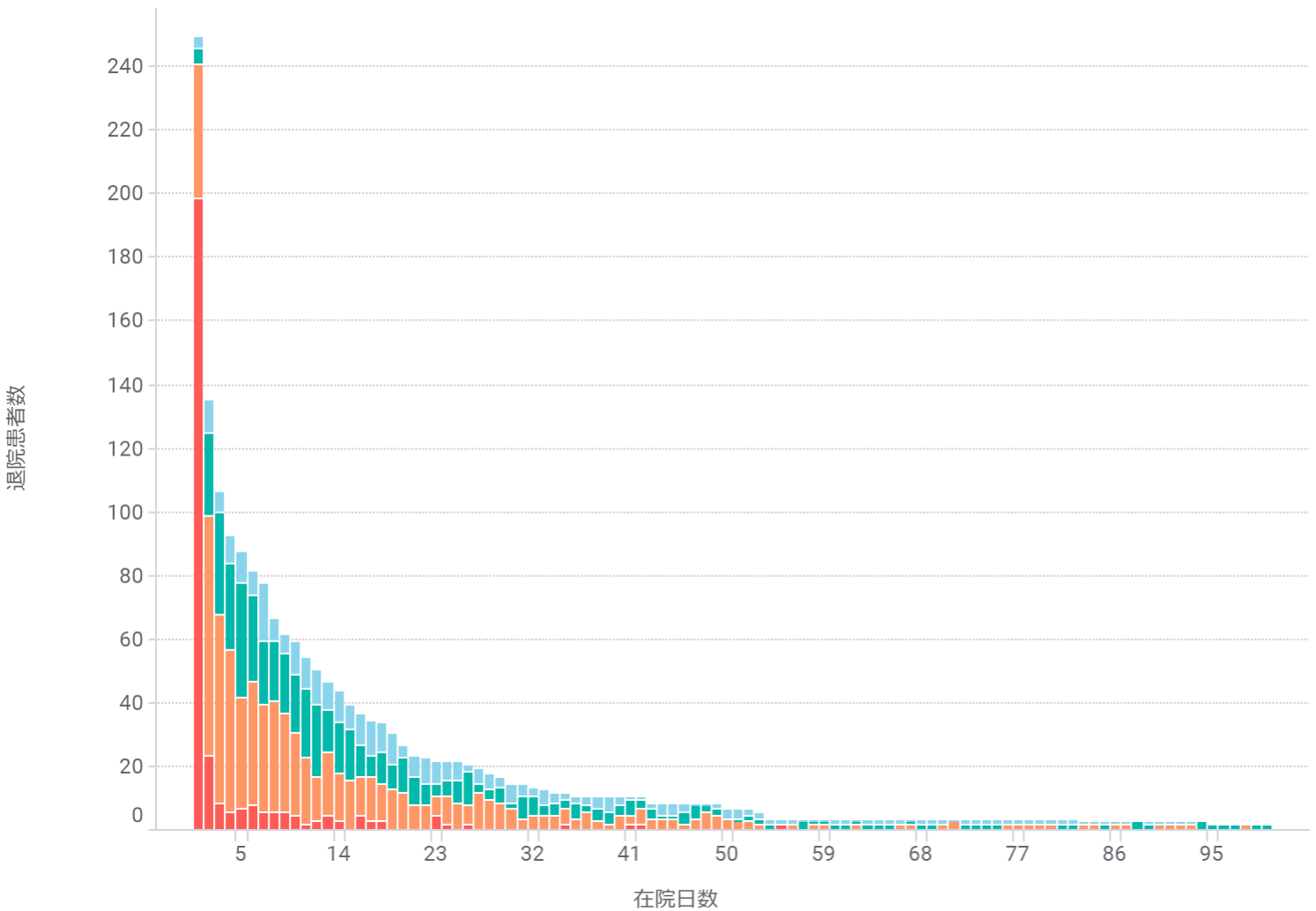


手術あり

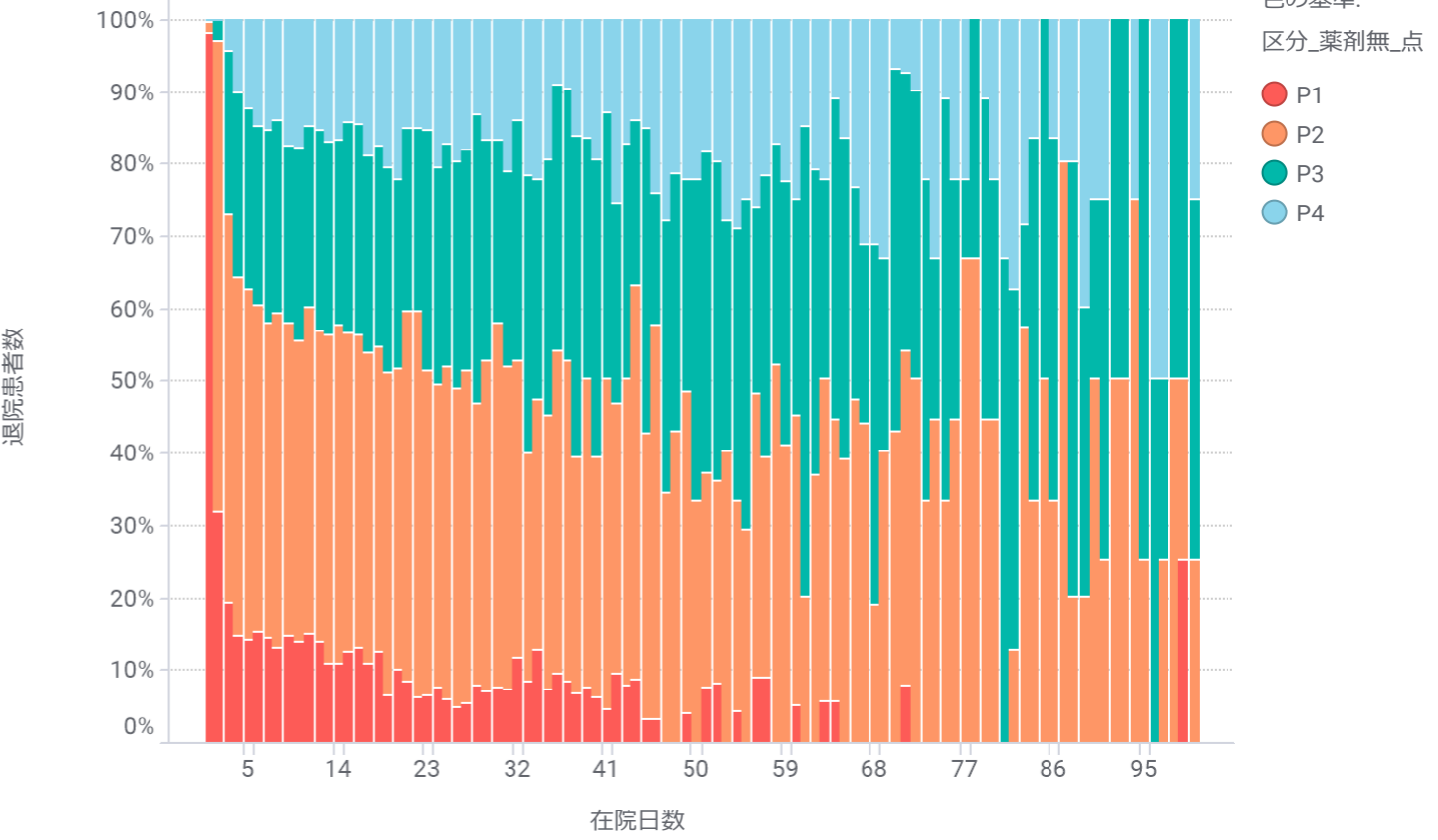
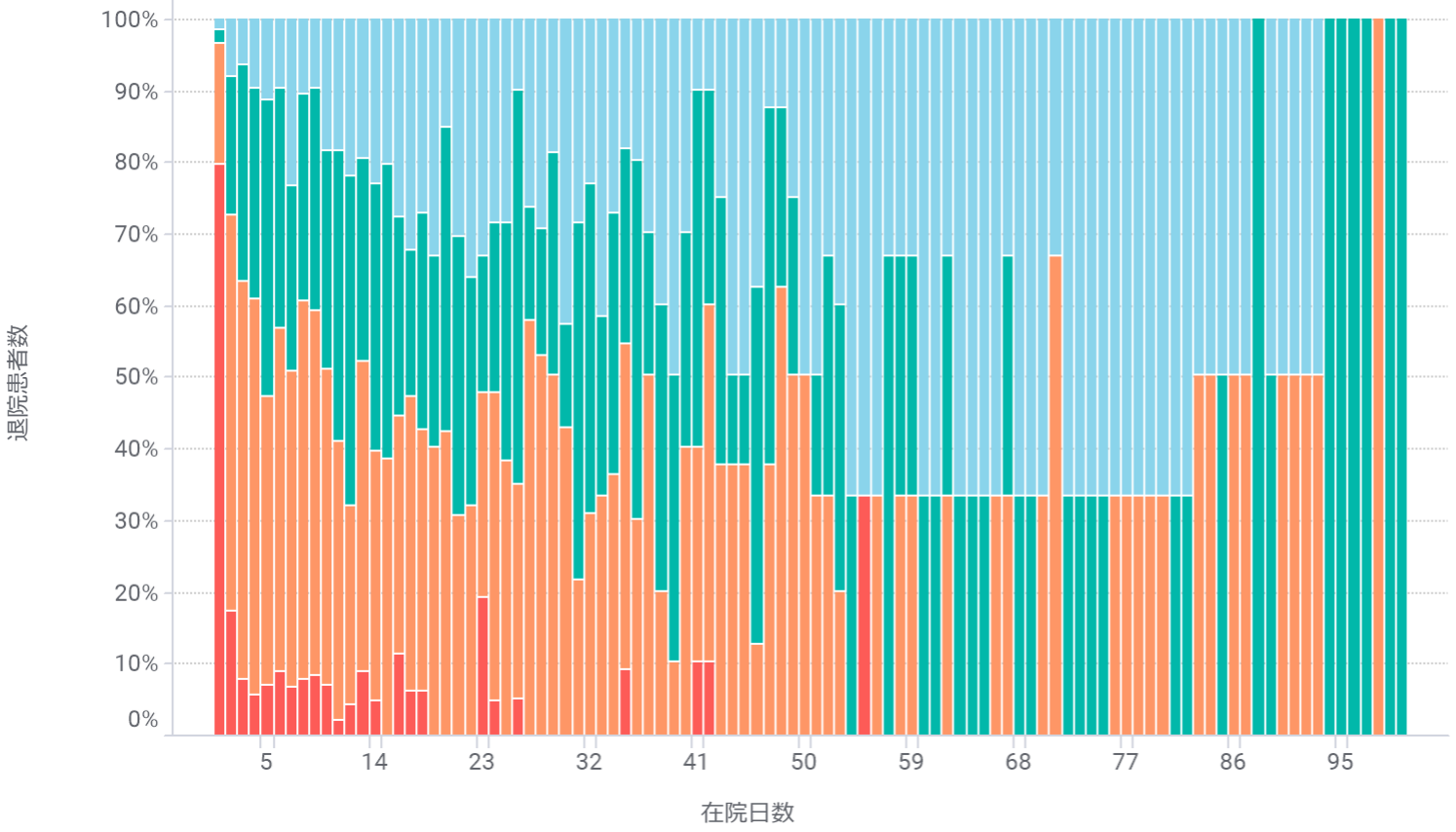
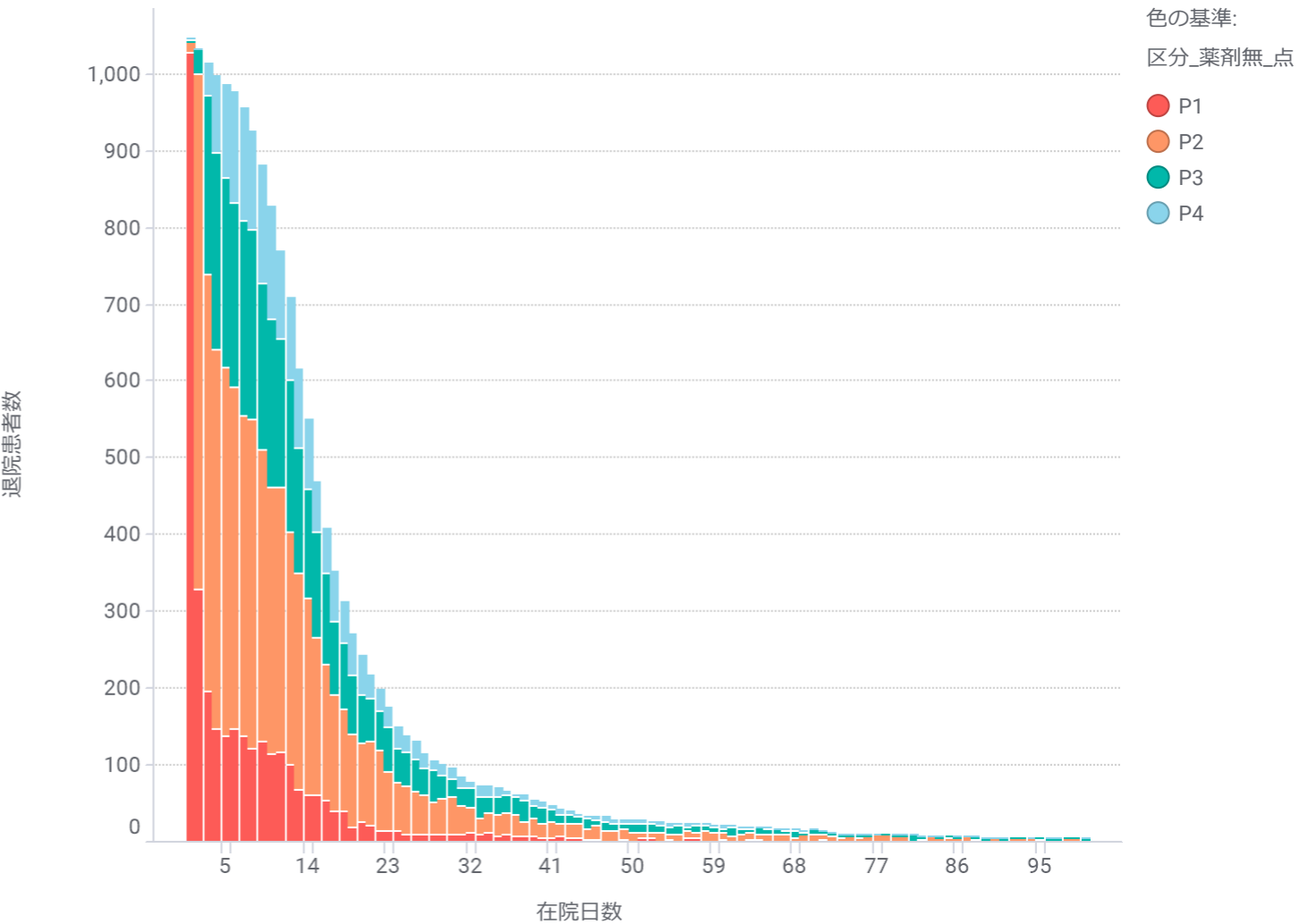


心疾患① 050030:急性心筋梗塞（続発性合併症を含む）、再発性心筋梗塞

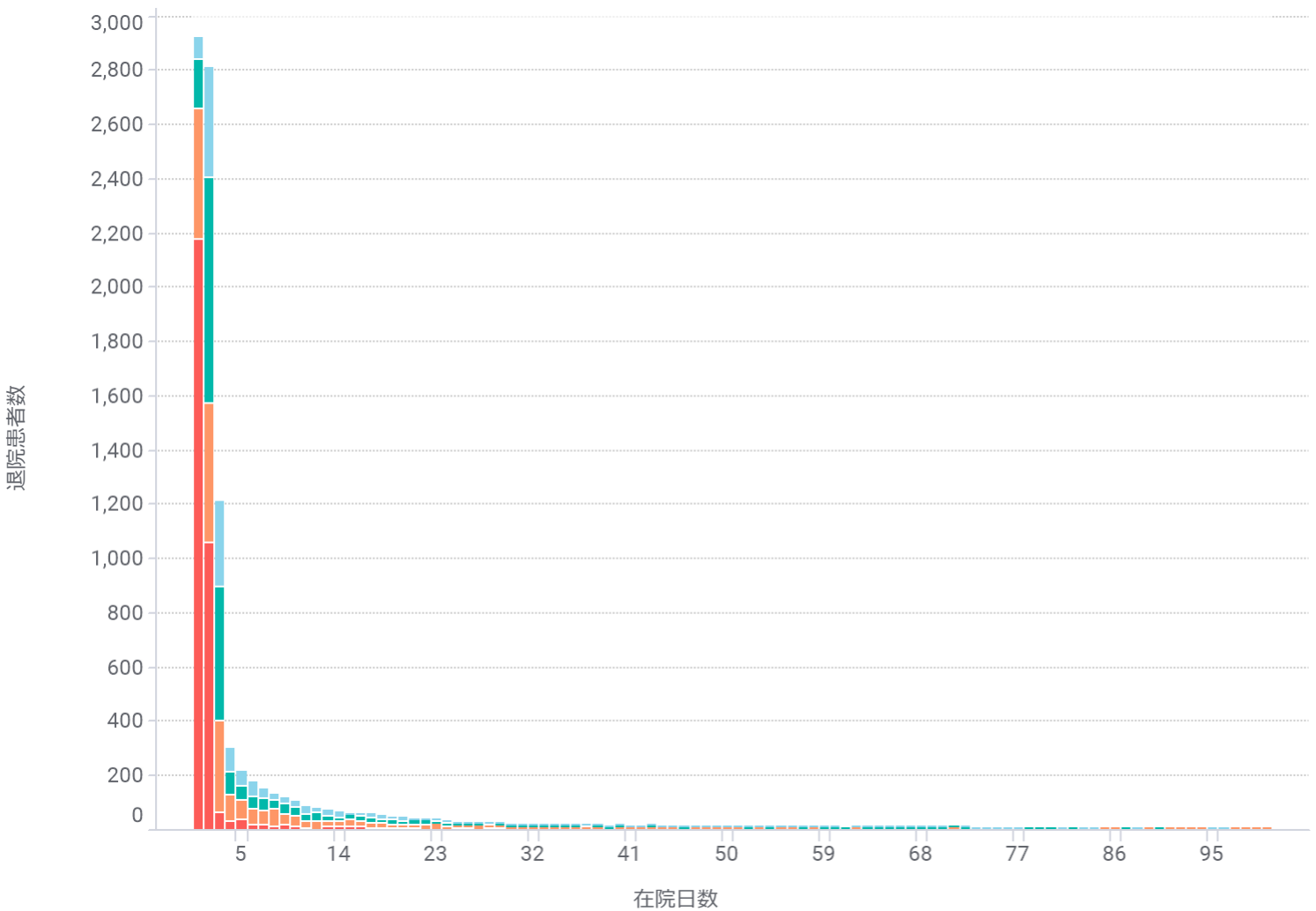
手術なし



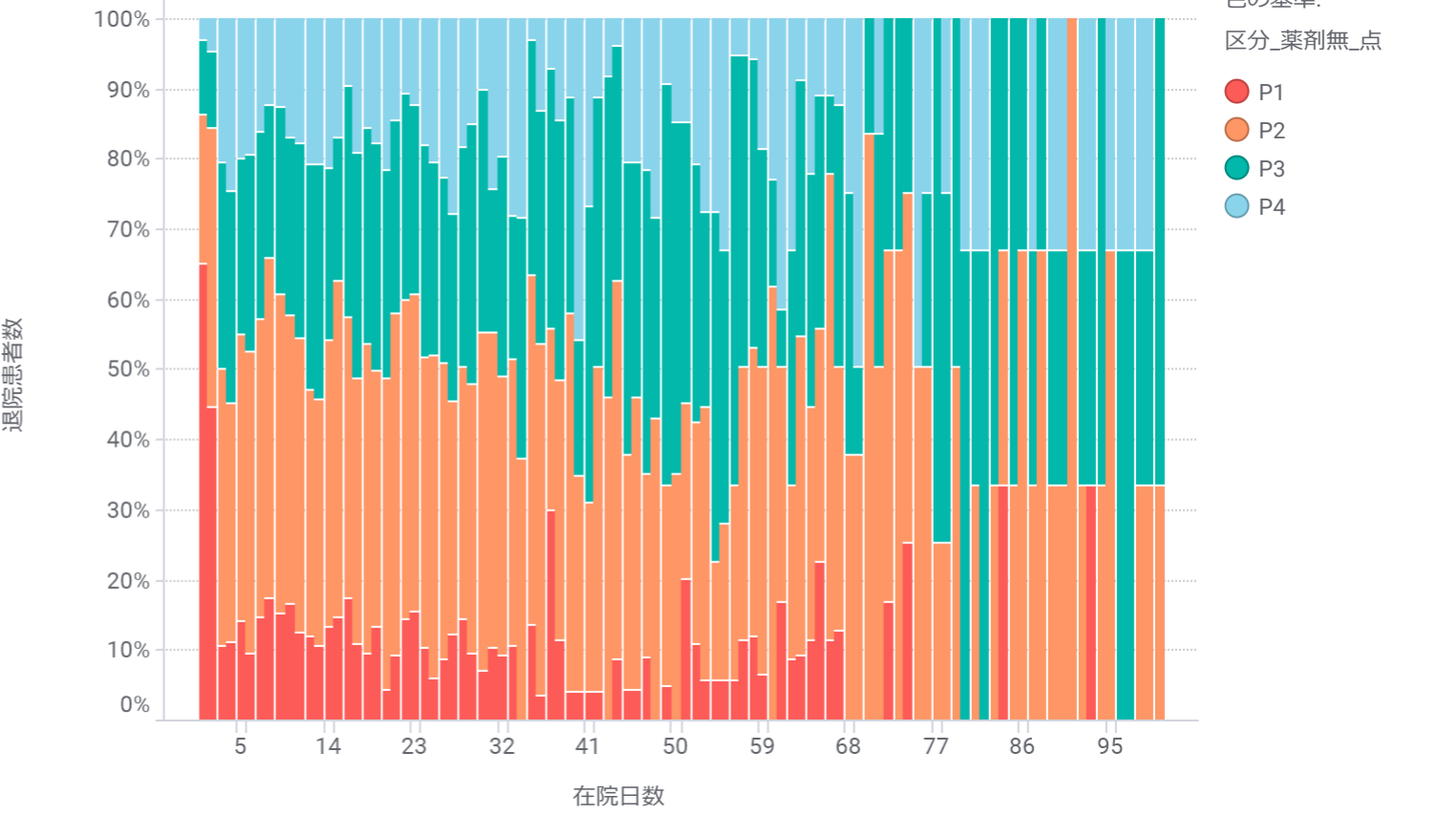
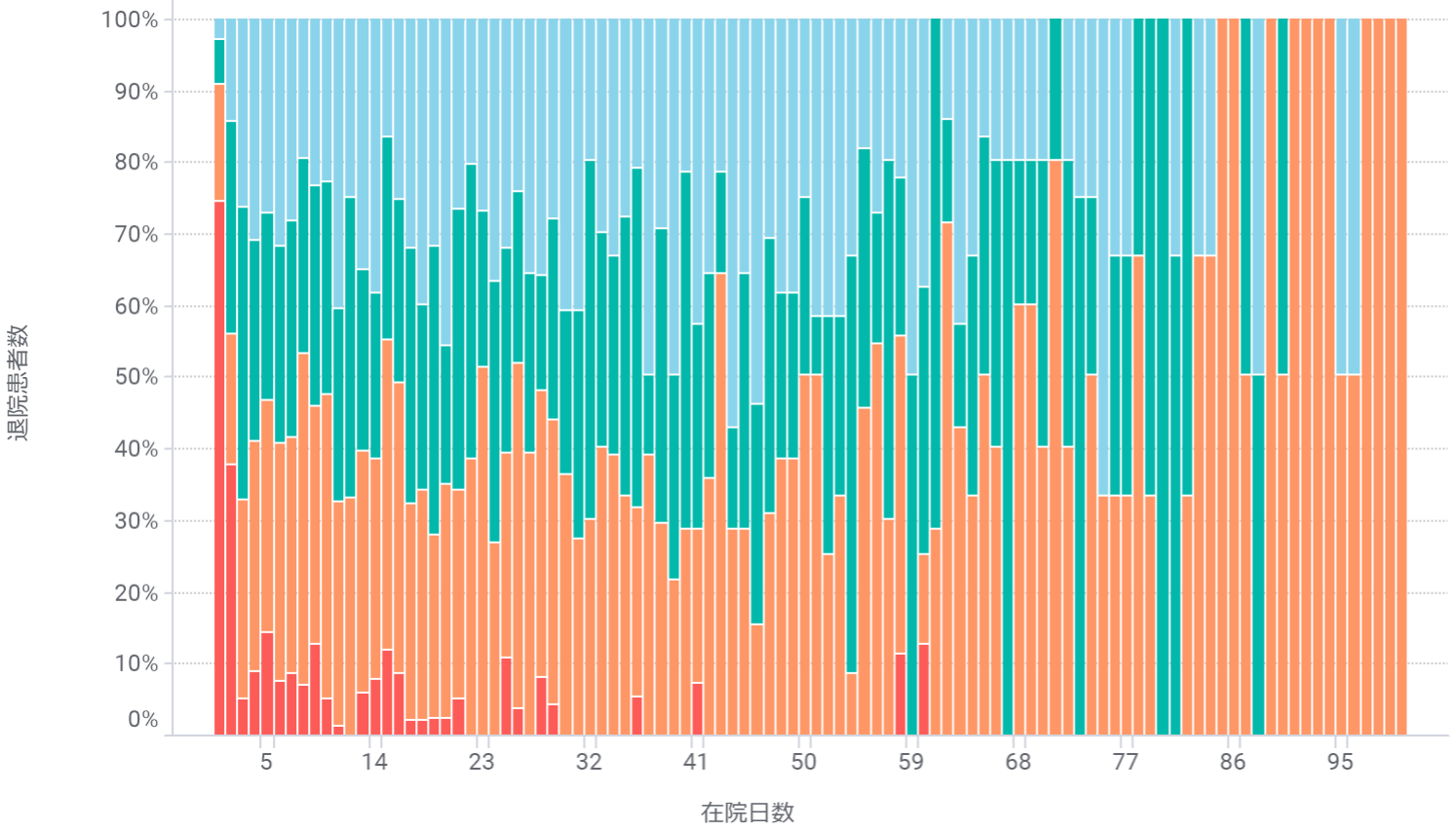
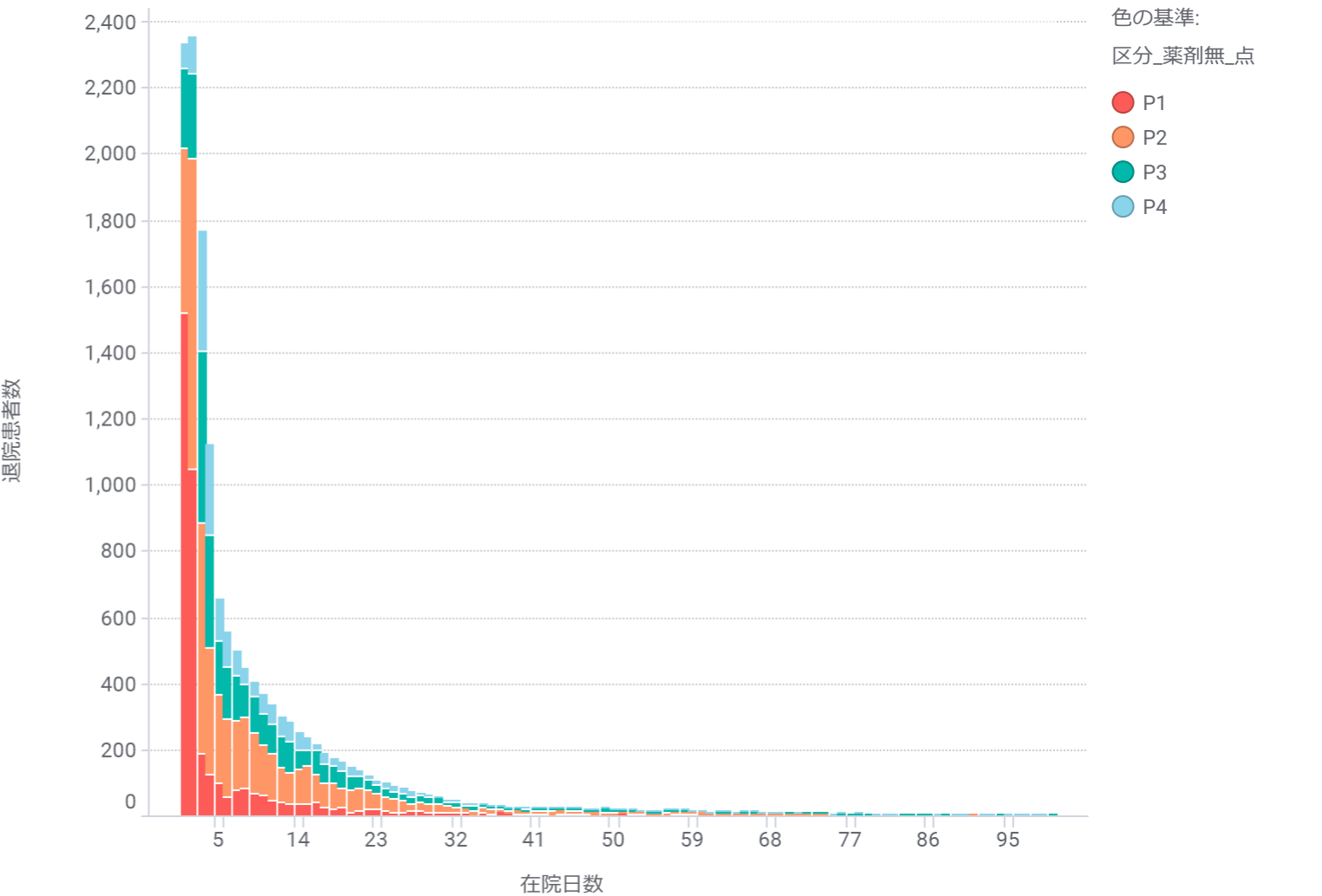
手術あり



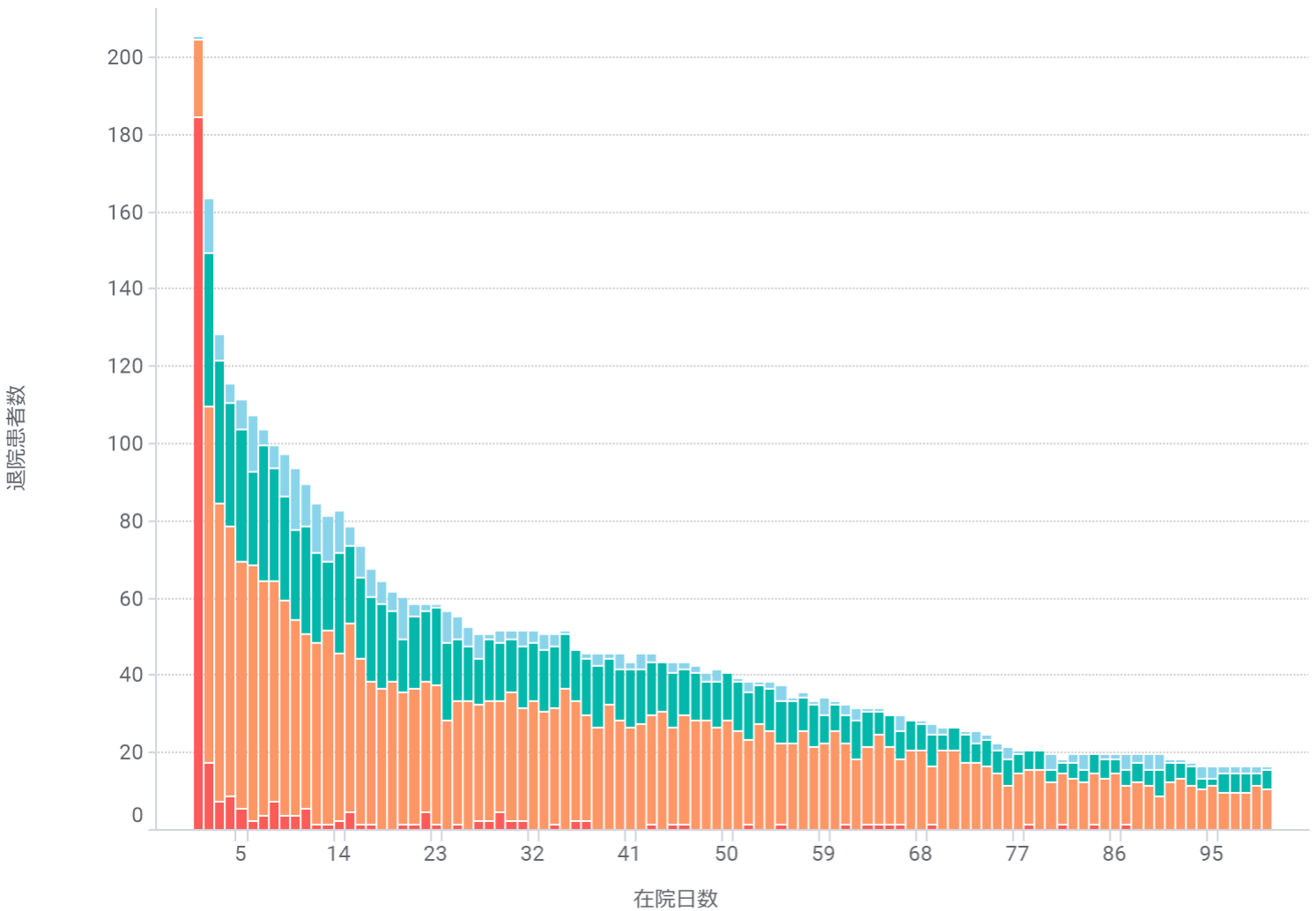
手術なし



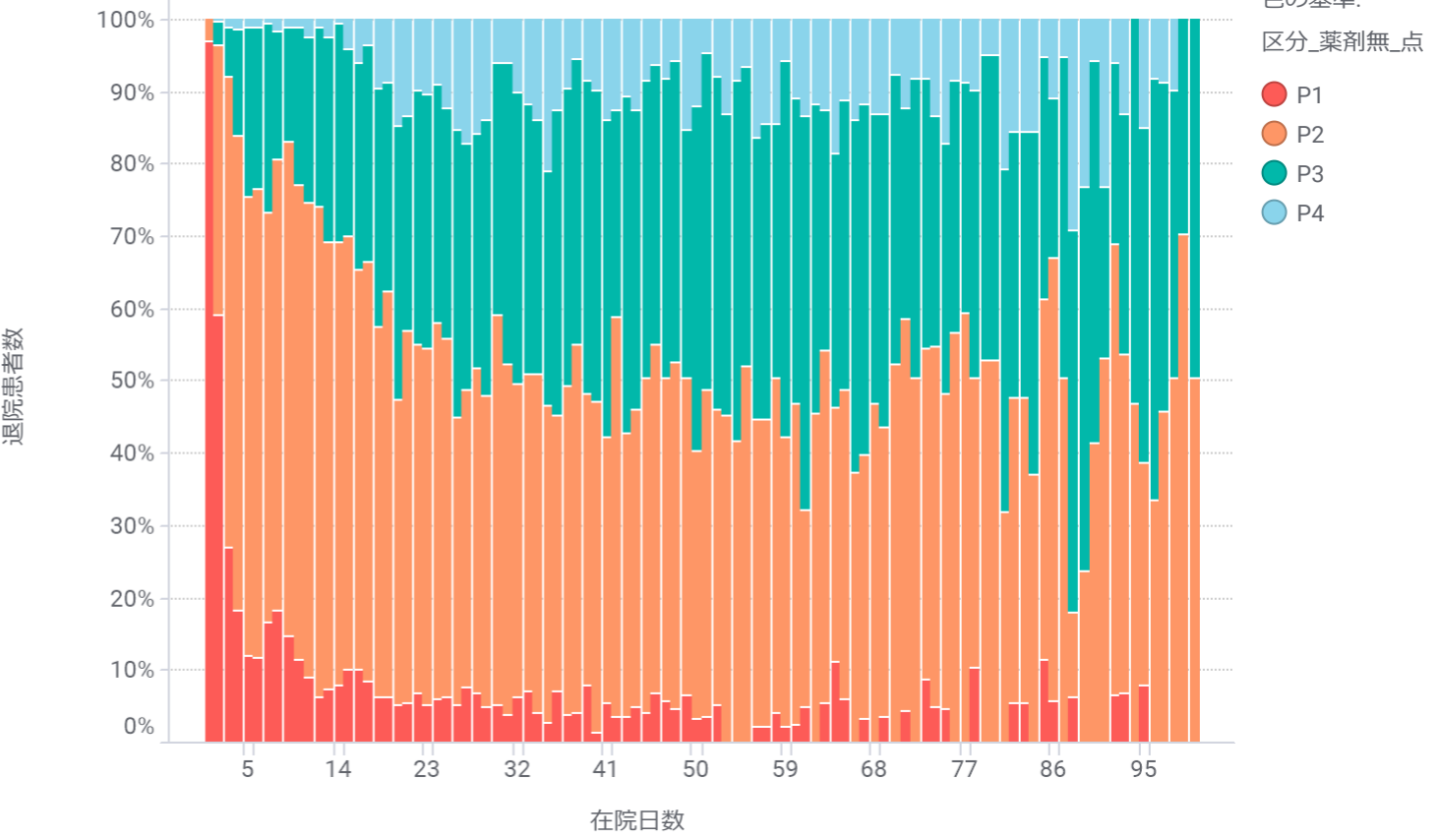
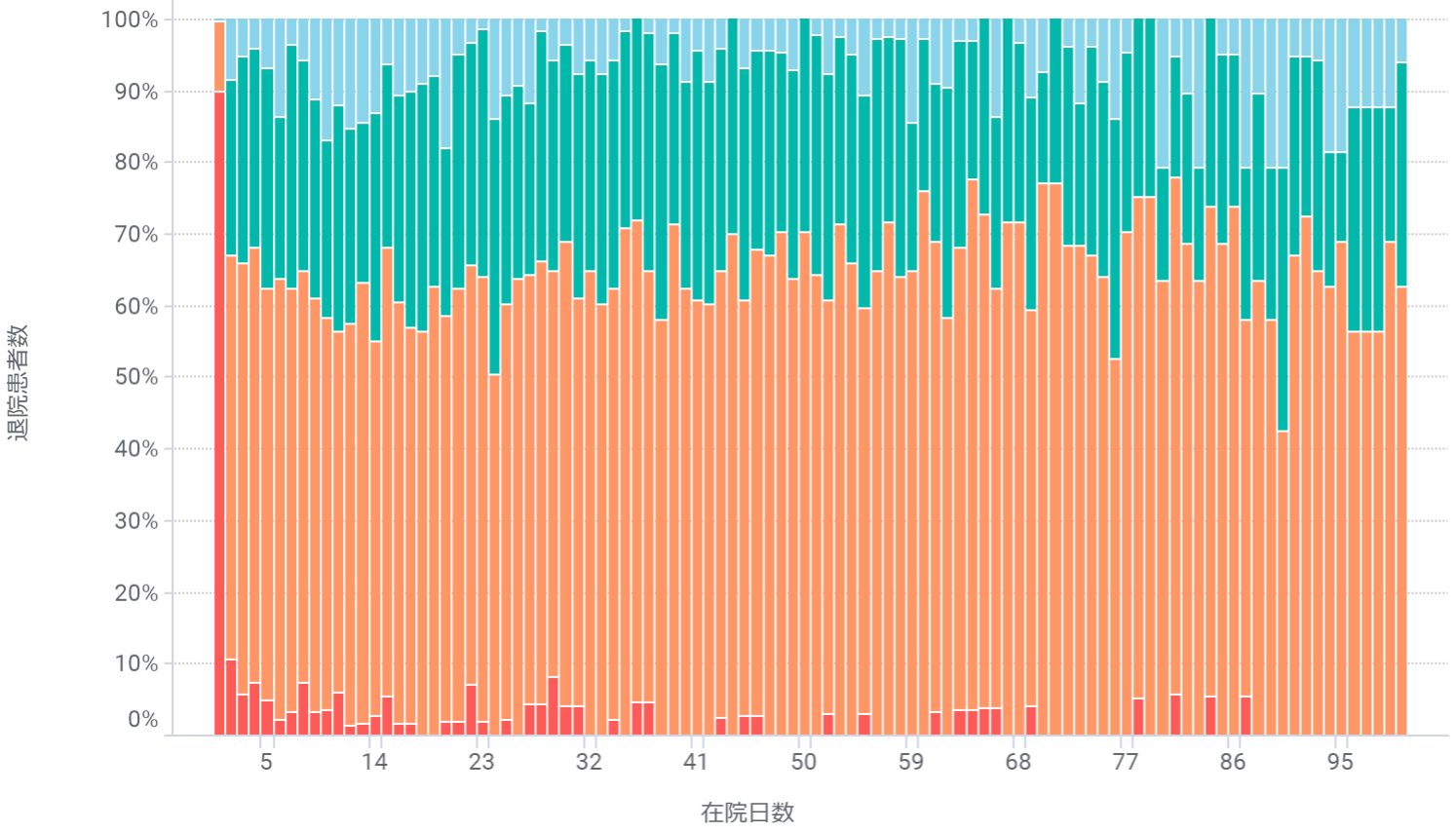
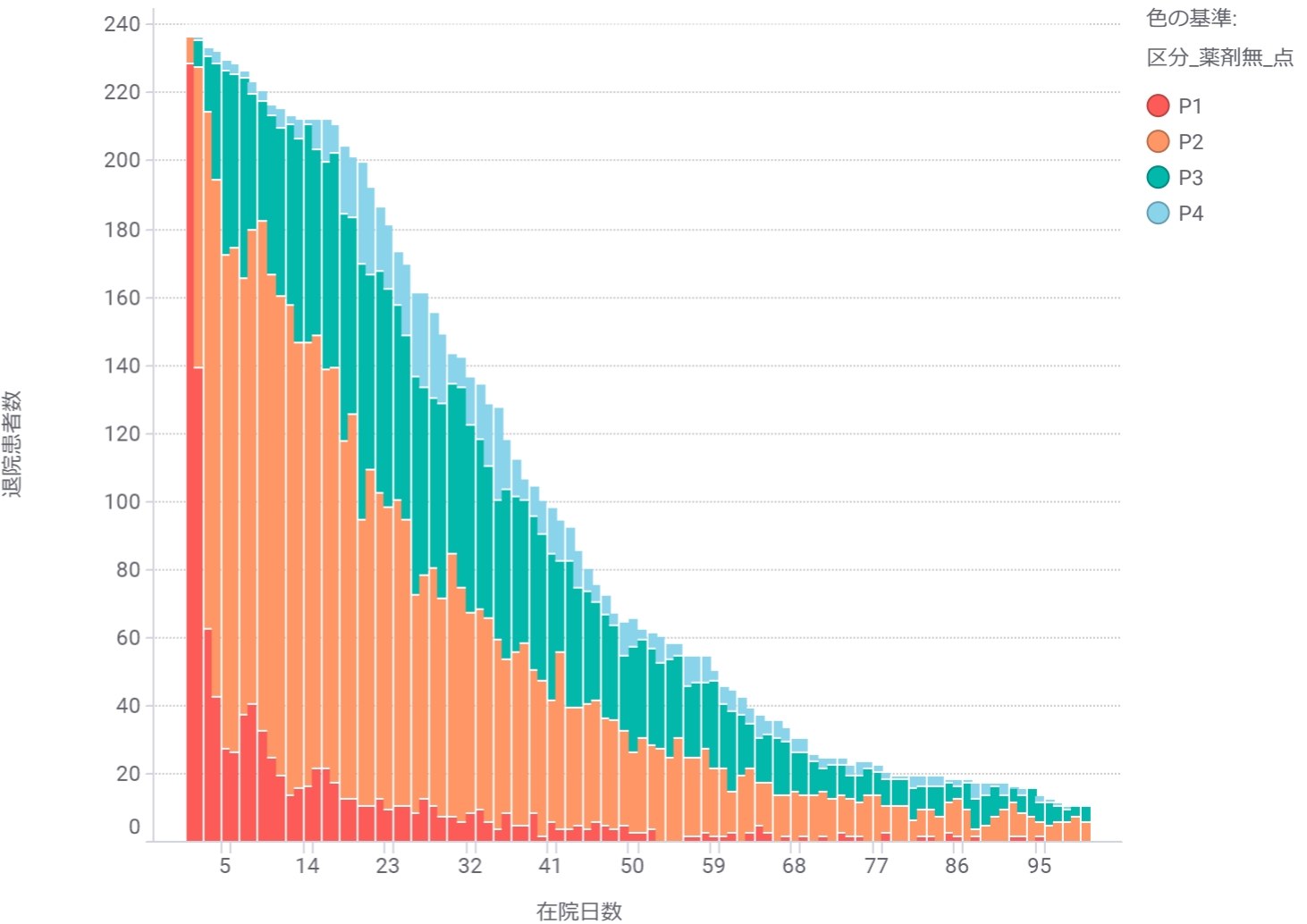
手術あり



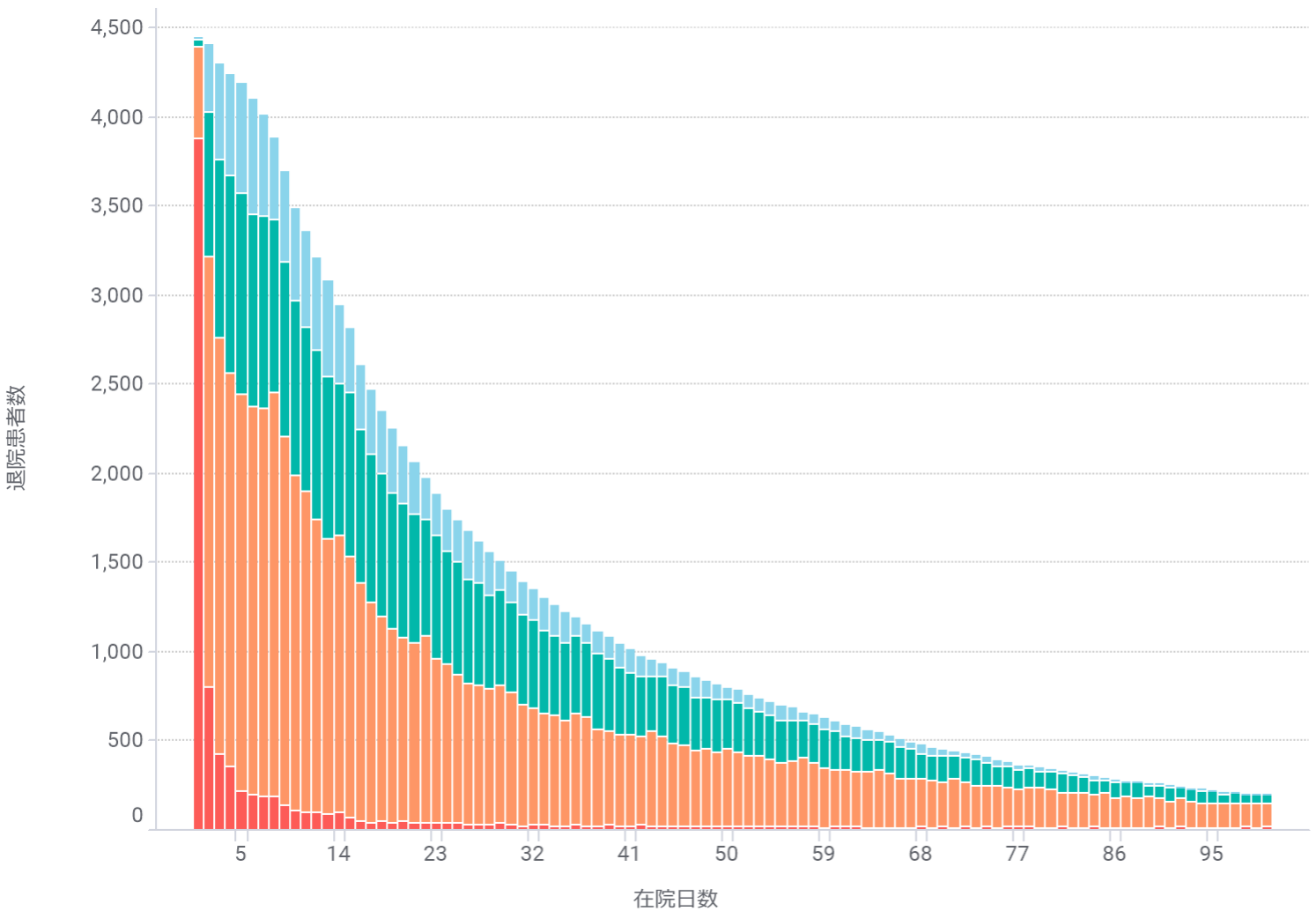
手術なし



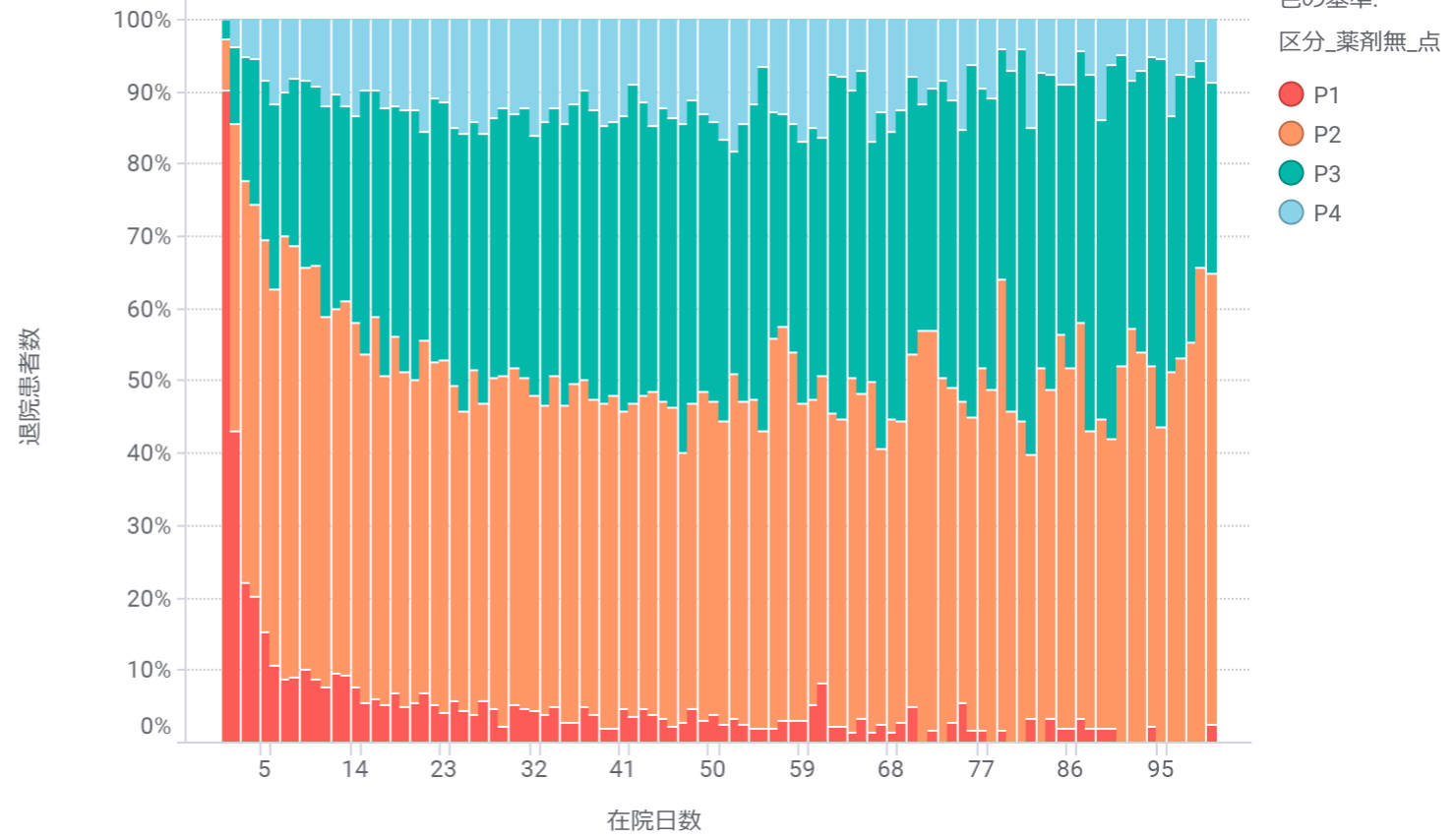
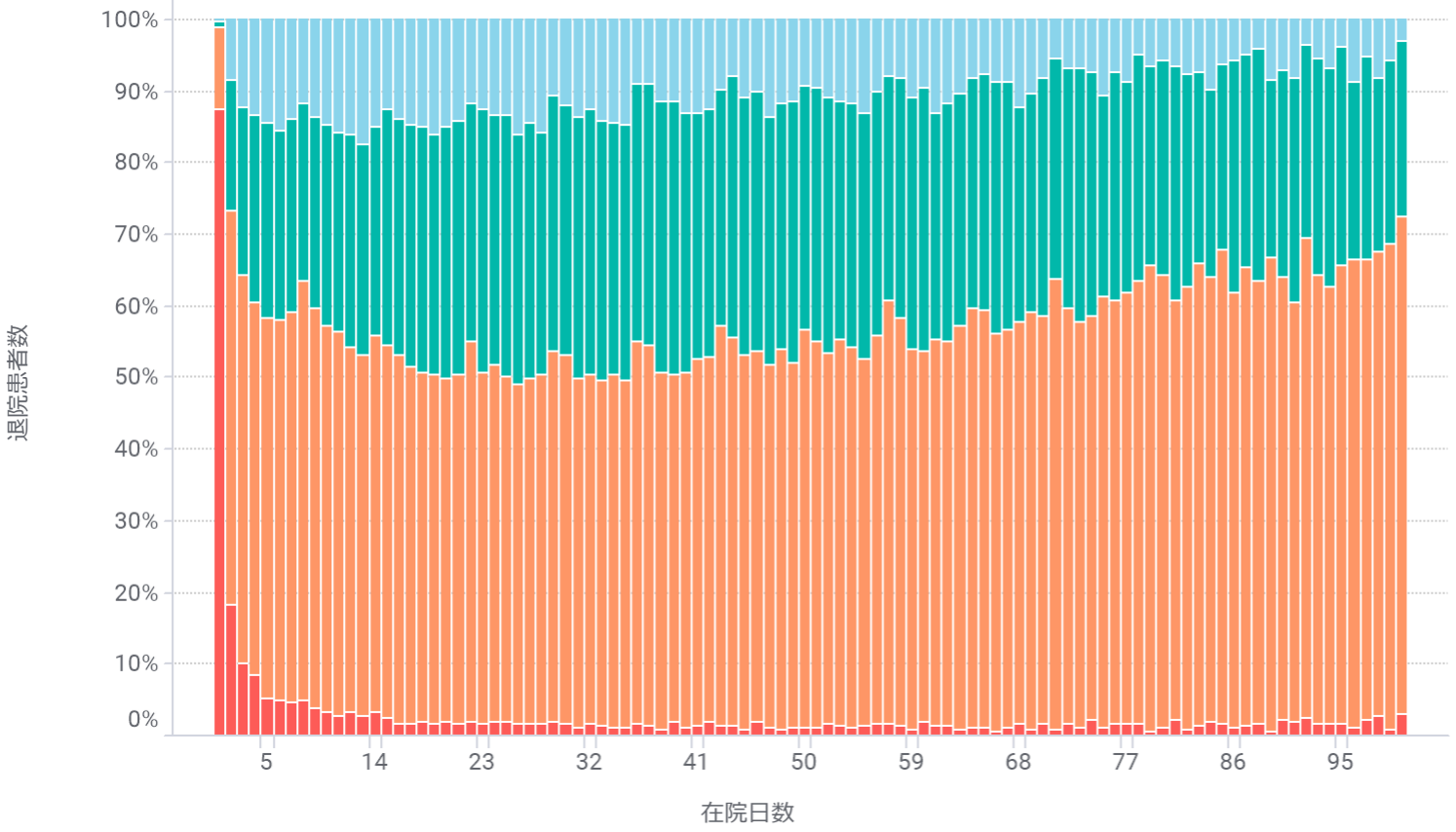
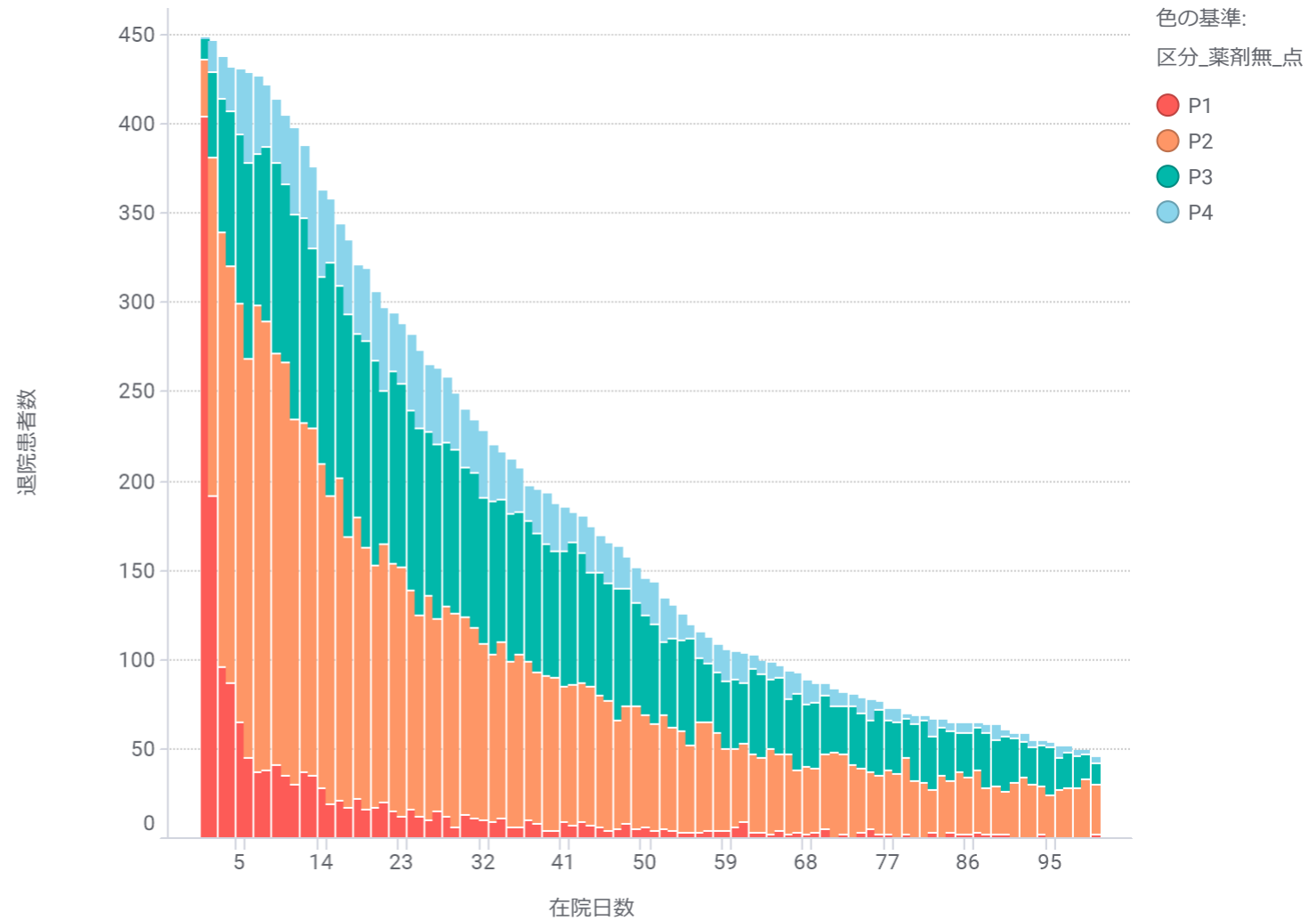
手術あり



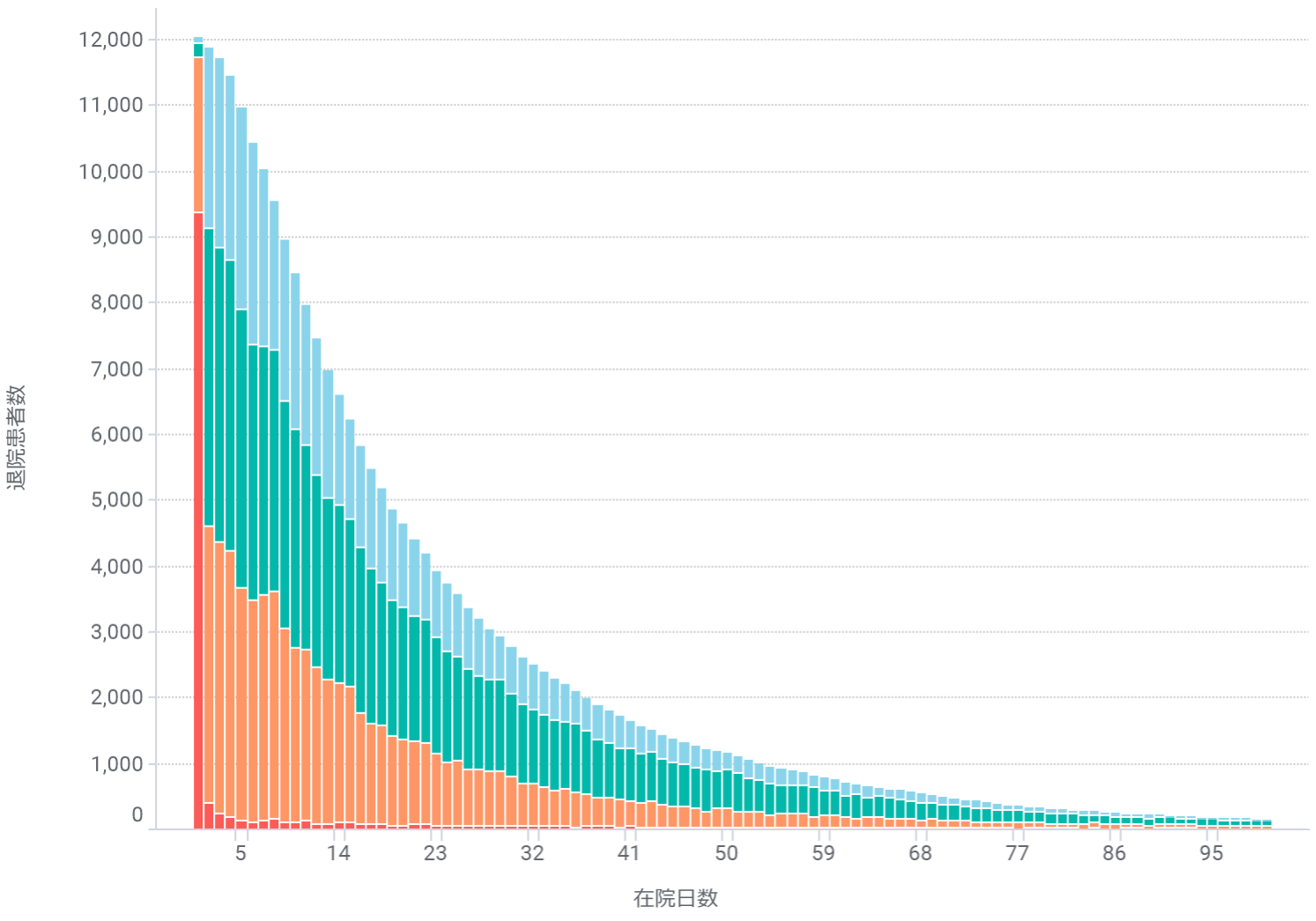
手術なし



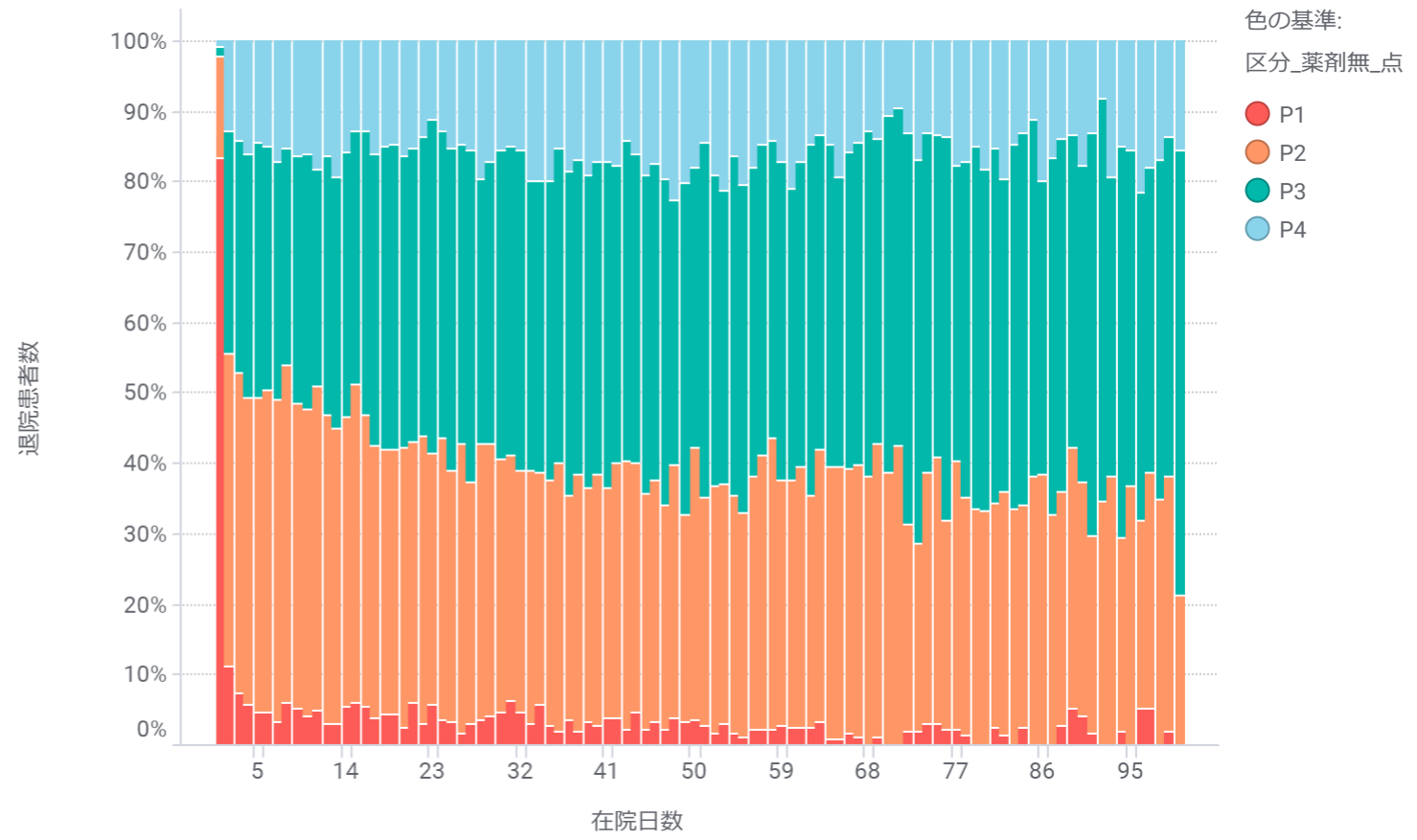
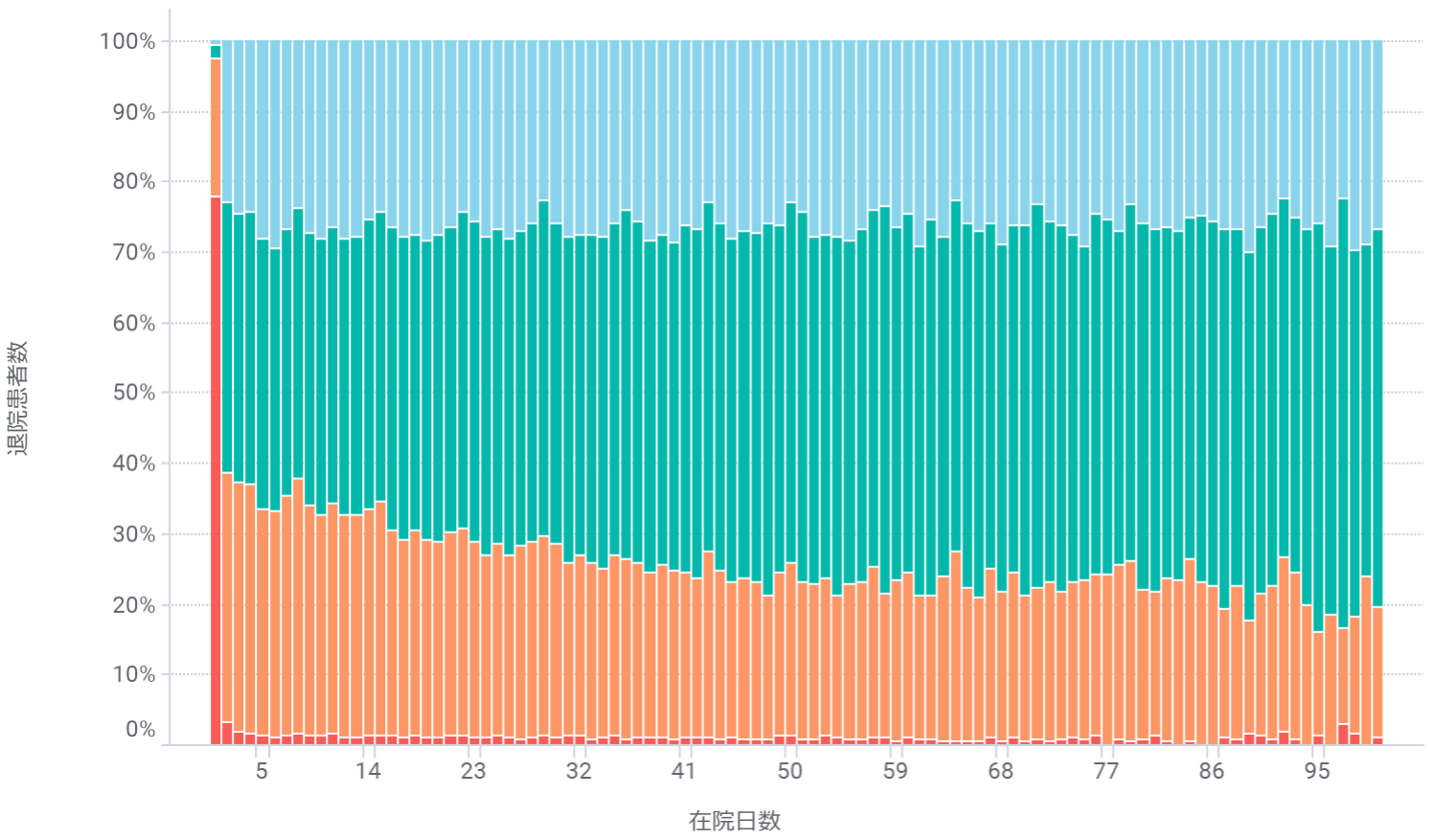
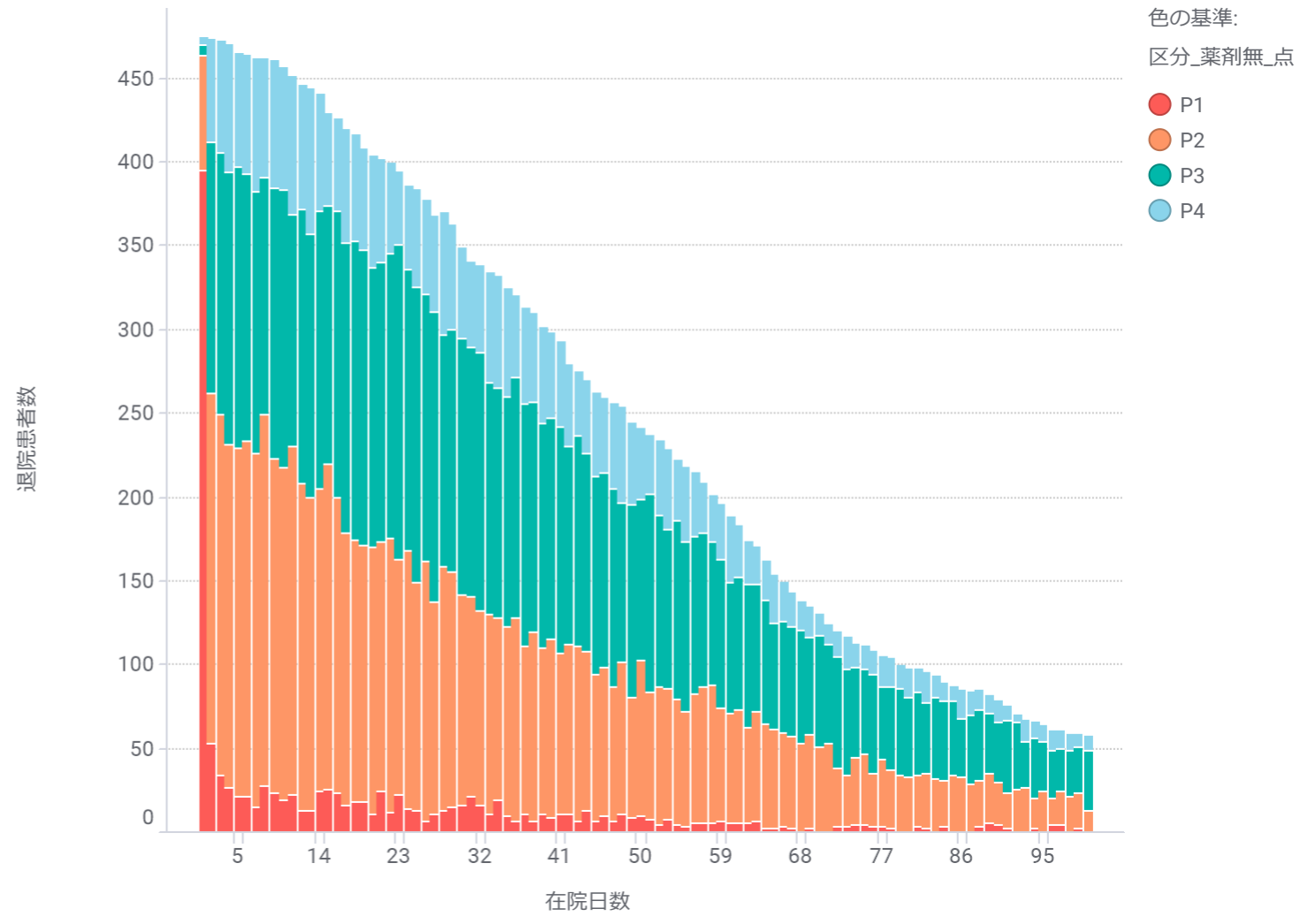
手術あり



手術なし

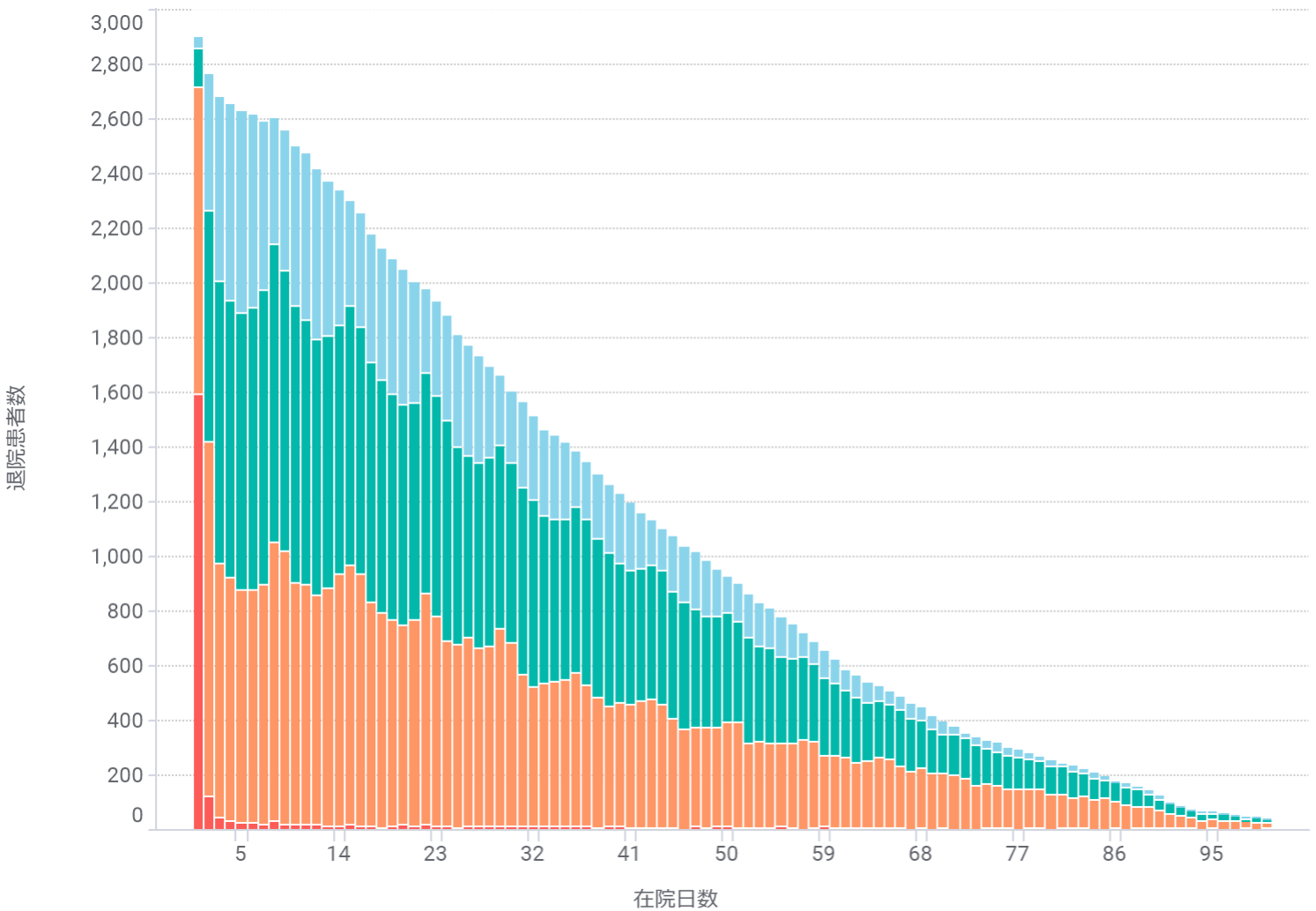


手術あり

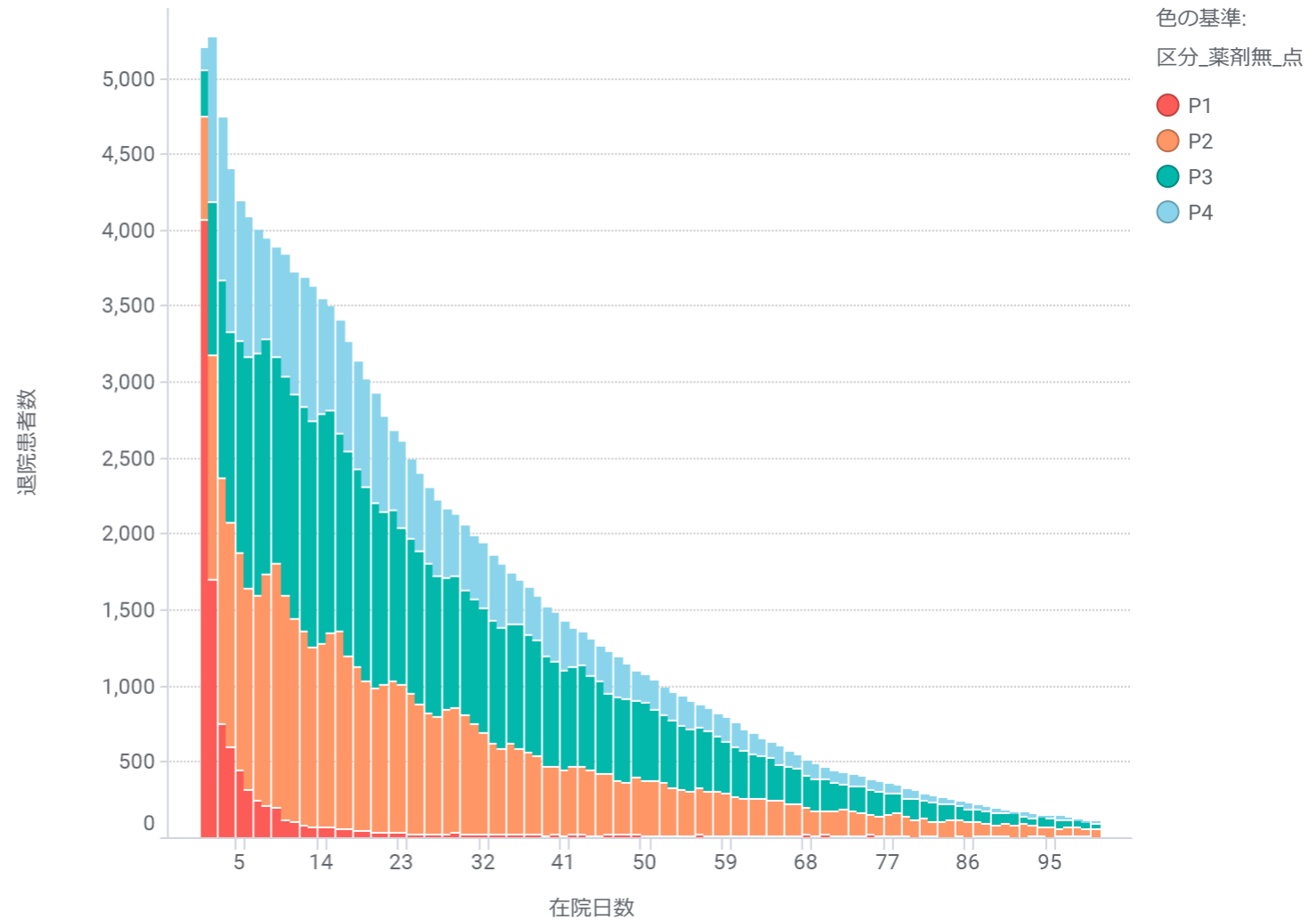


骨折 (160690・160700・160720・160740・160760・160800・160835・160850)

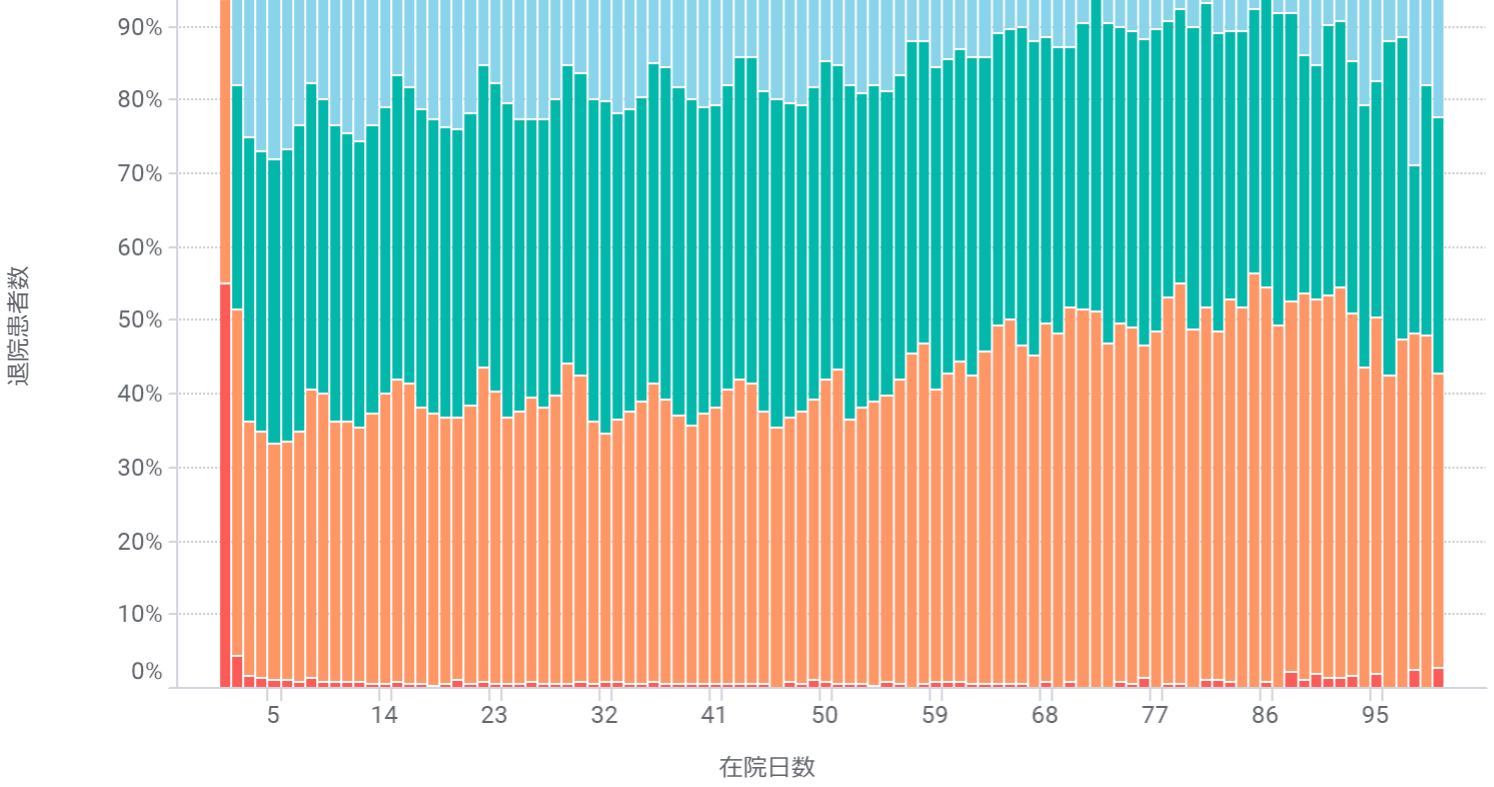
手術なし



手術あり



手術なし



手術あり

