

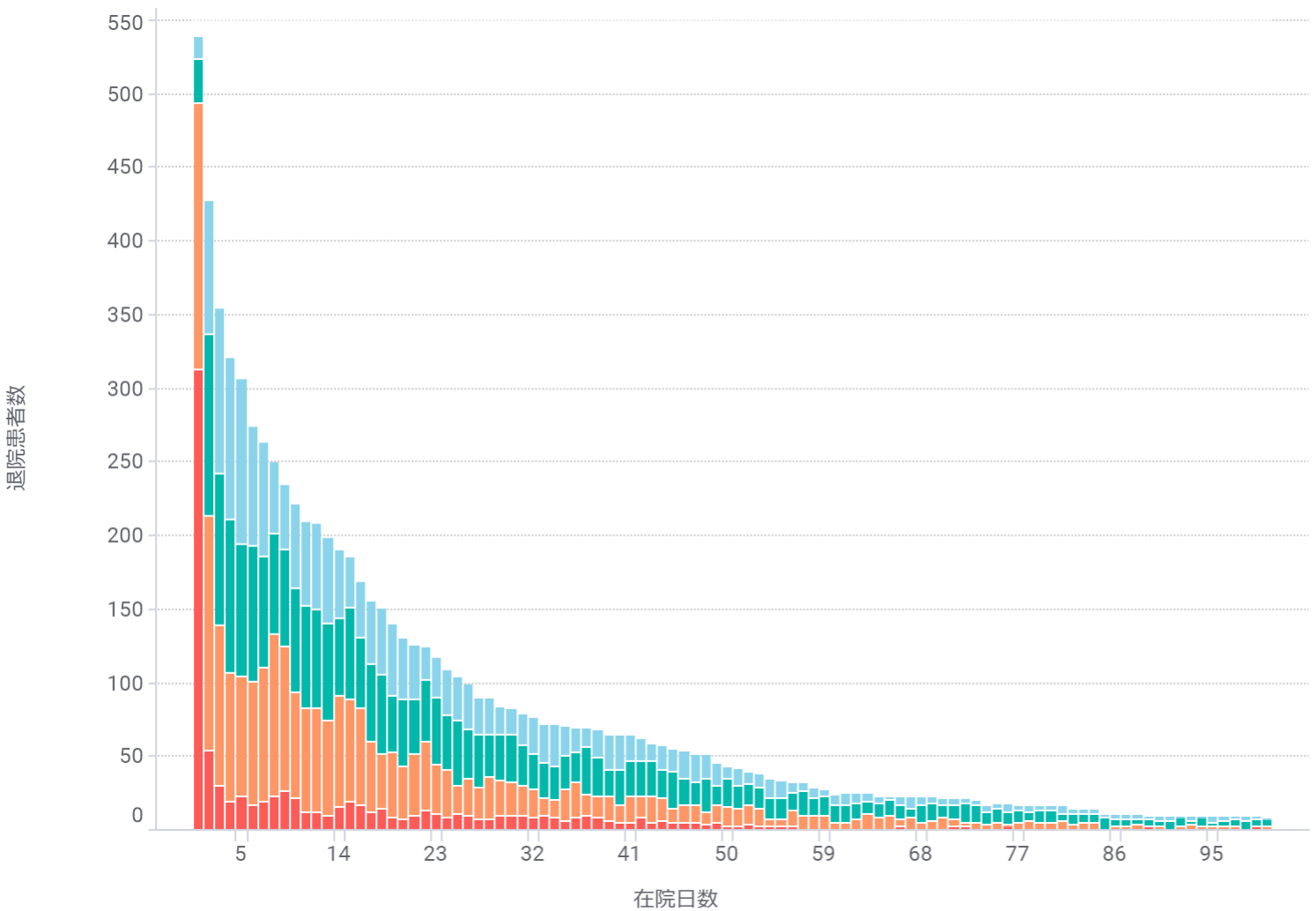
# 医療資源投入量の分布

厚生労働省が平成27年3月に示した地域医療構想策定ガイドラインの医療機能区分（高度急性期P1：3,000点以上、急性期P2：600点以上、回復期P3：175点以上、慢性期P4：175点未満）に基づき、DPCコード(診断群分類番号)のMDC（Major Diagnostic Category）別の医療資源投入量の分布状況についての実態把握

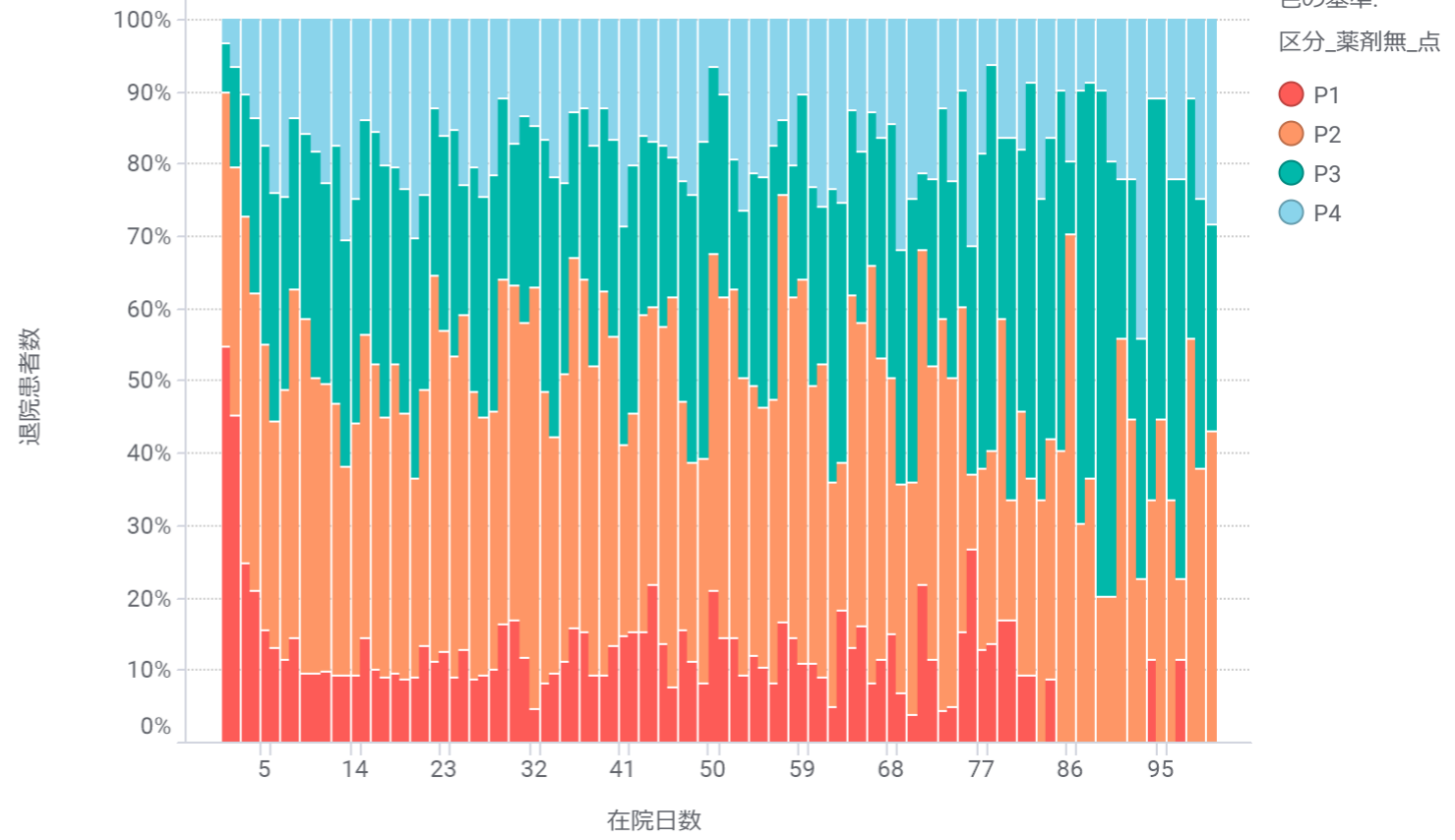
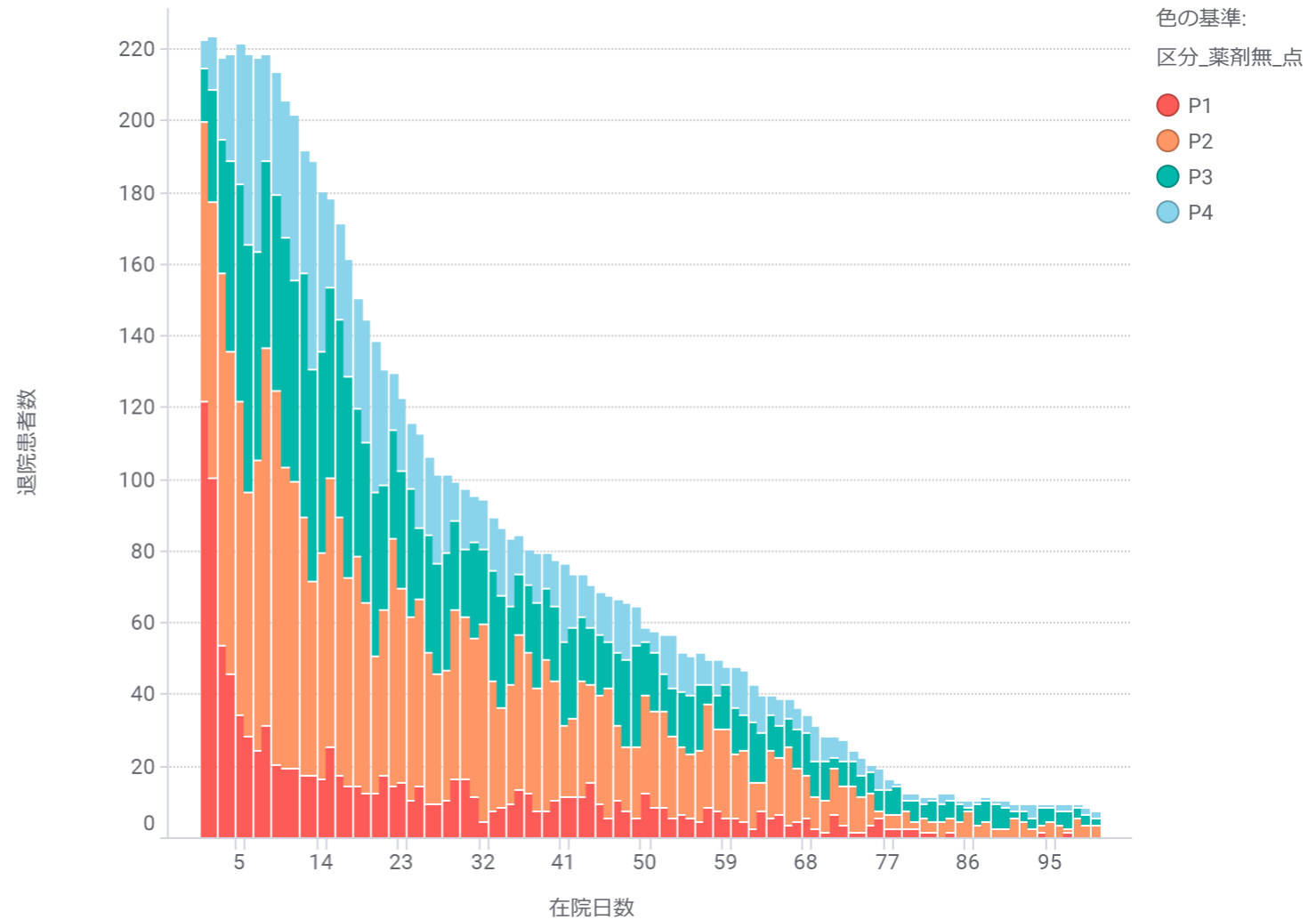
# 疾病別医療資源投入量の分布

2017

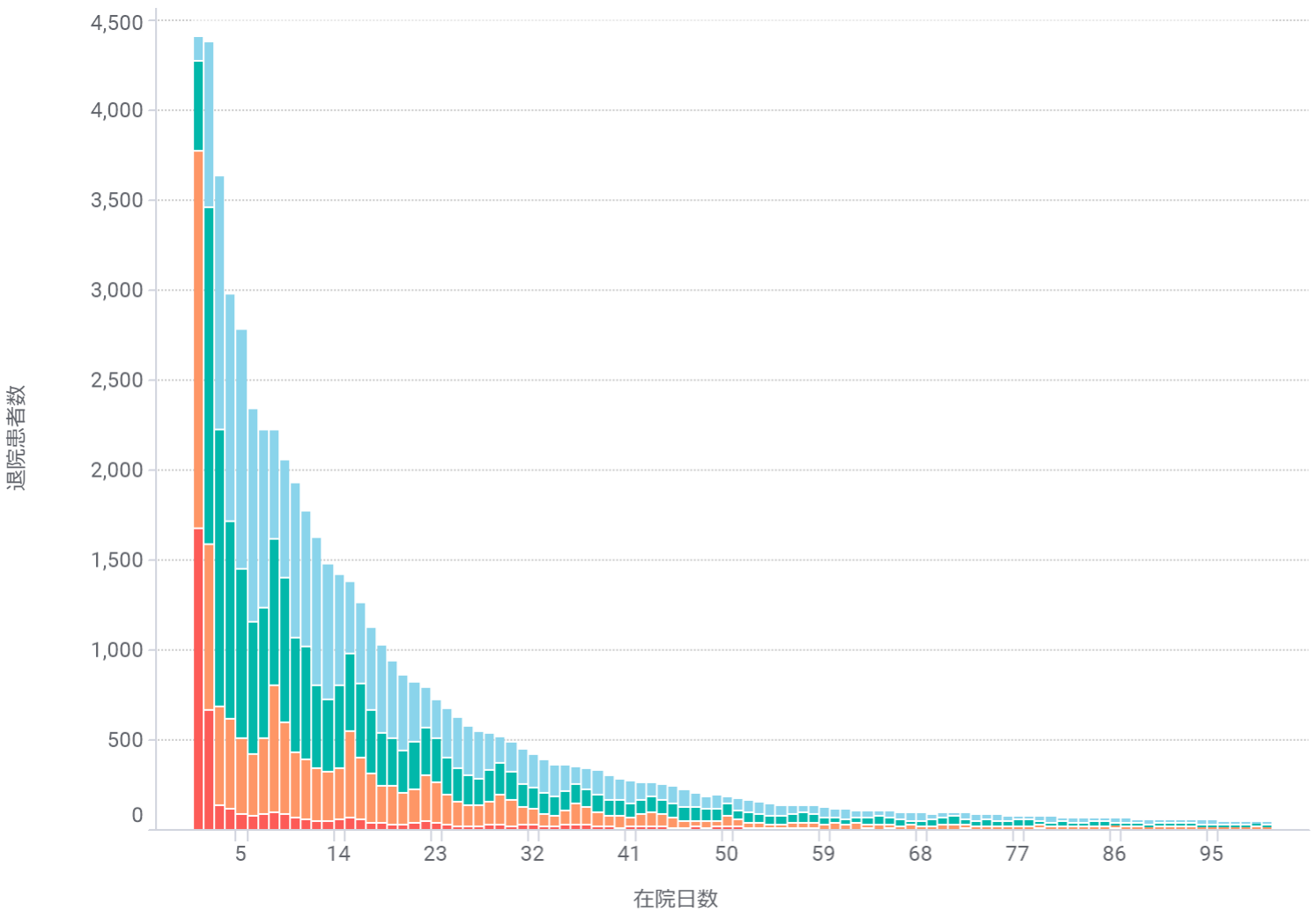
手術なし



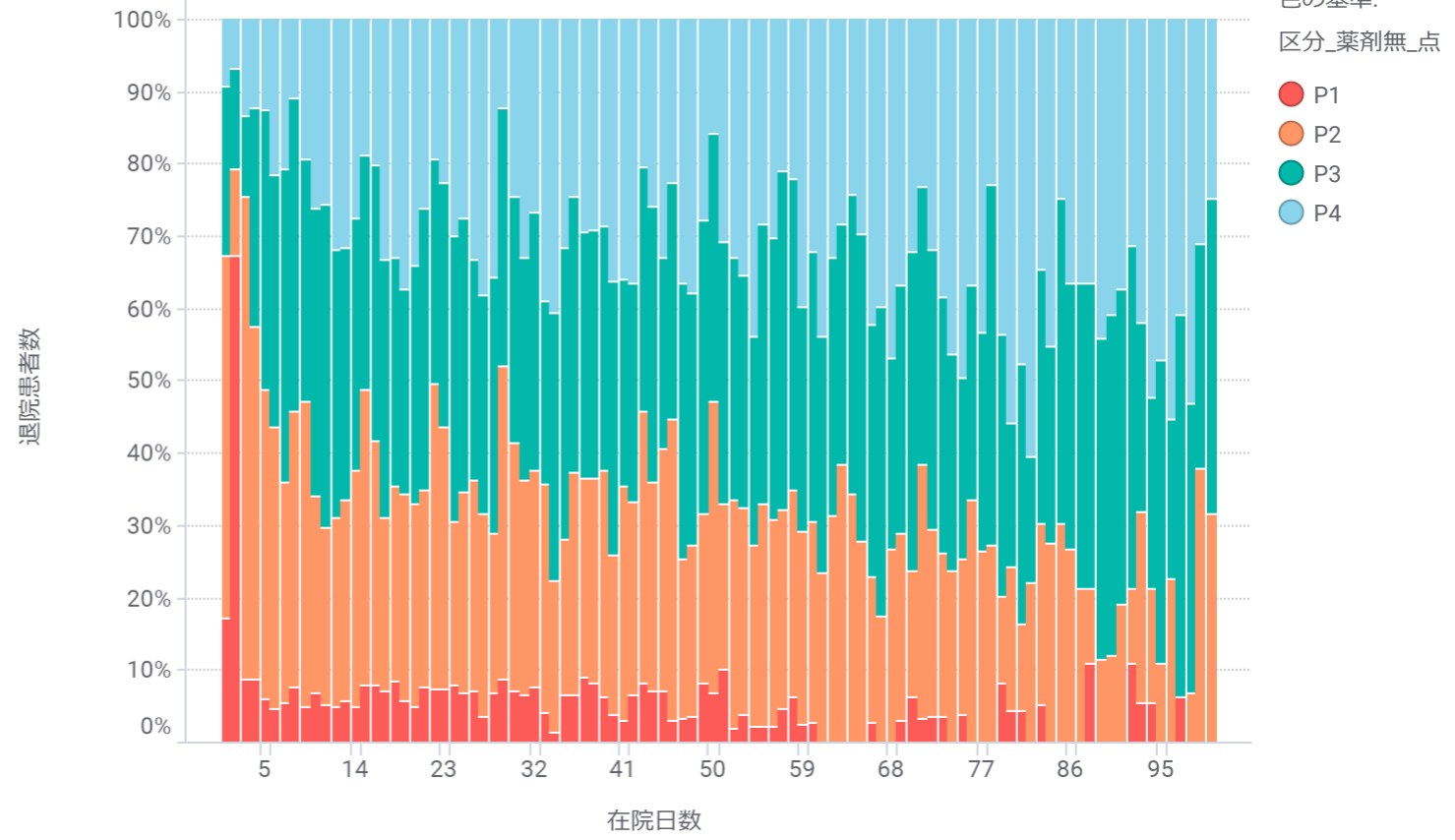
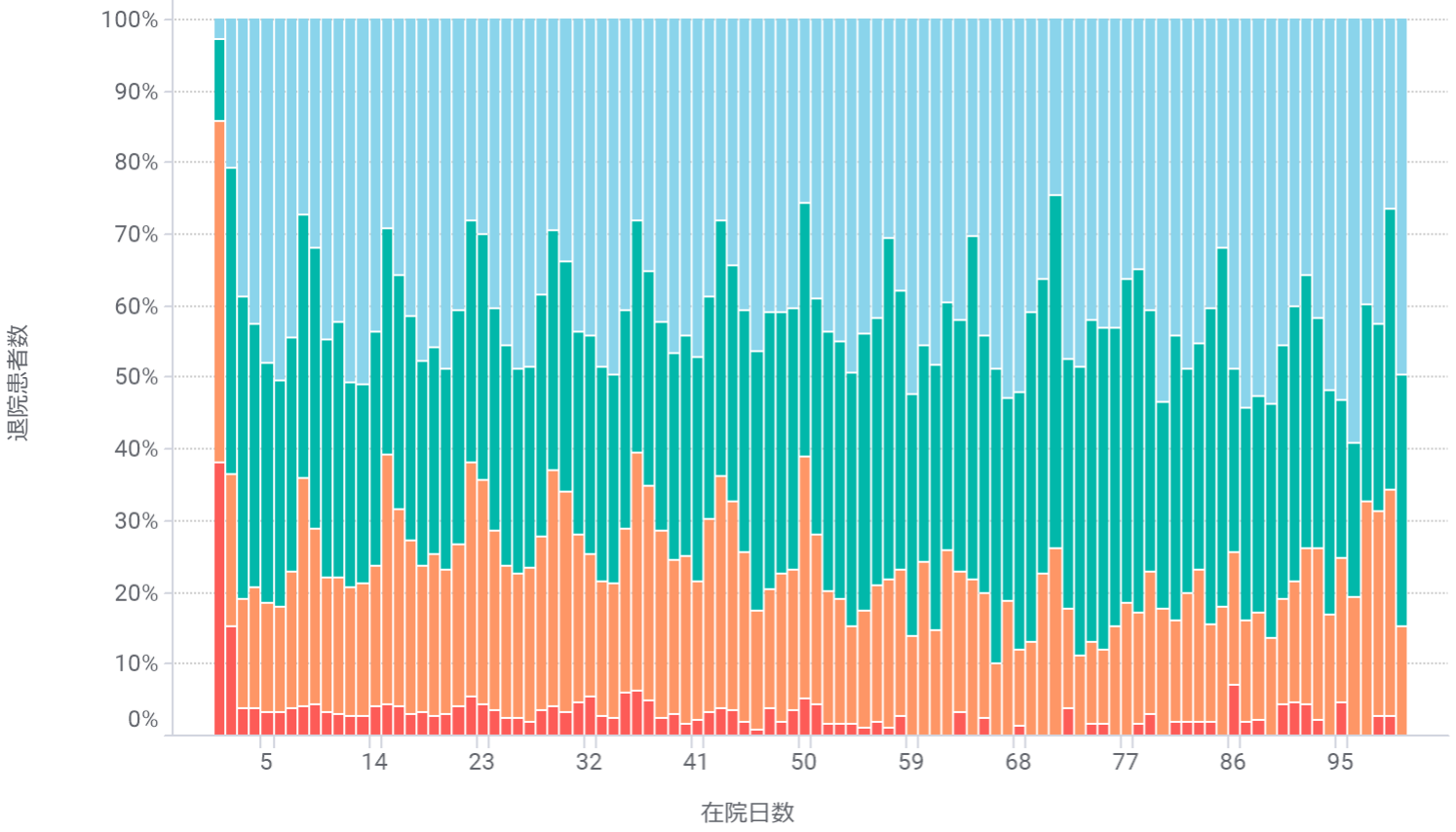
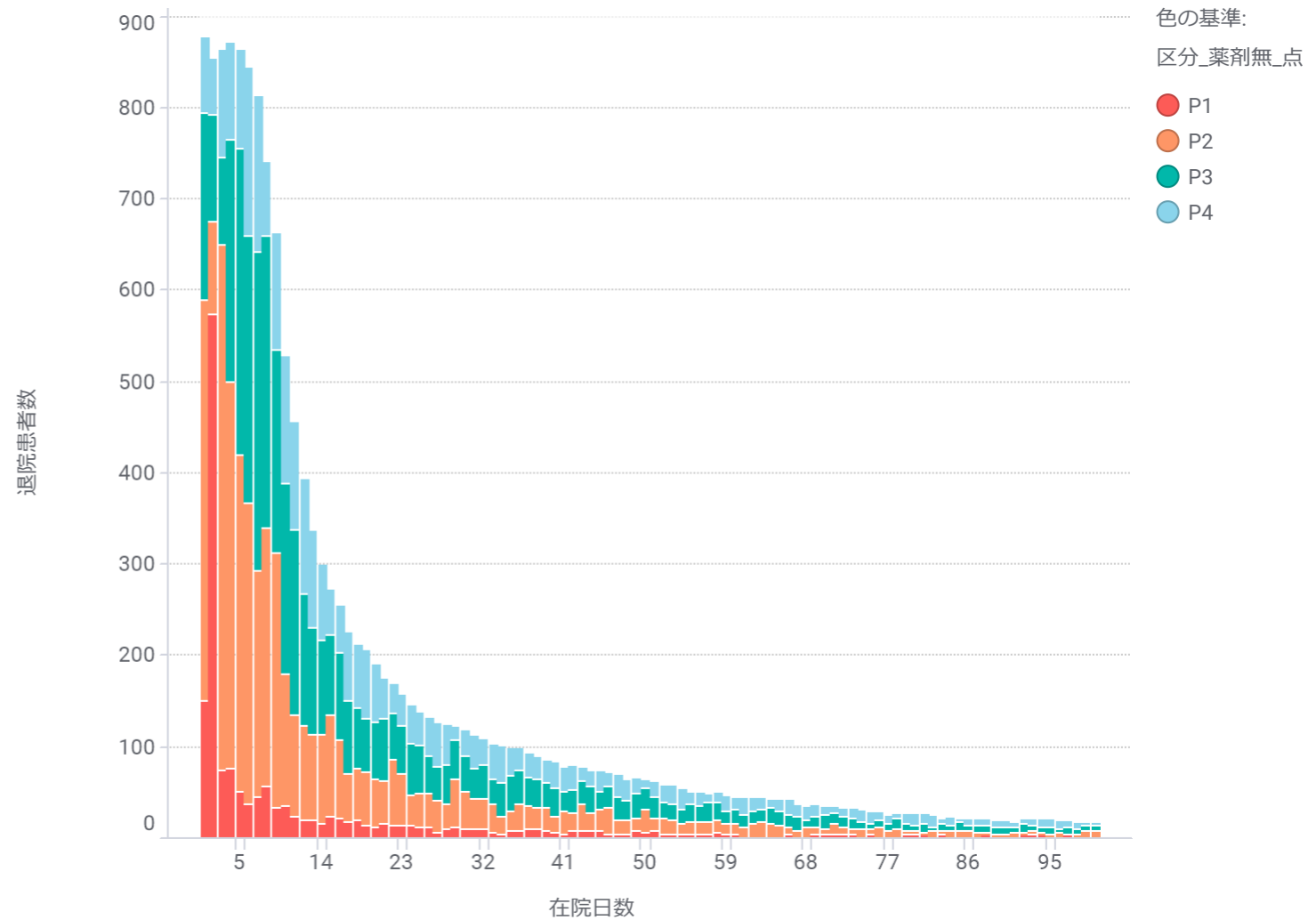
手術あり



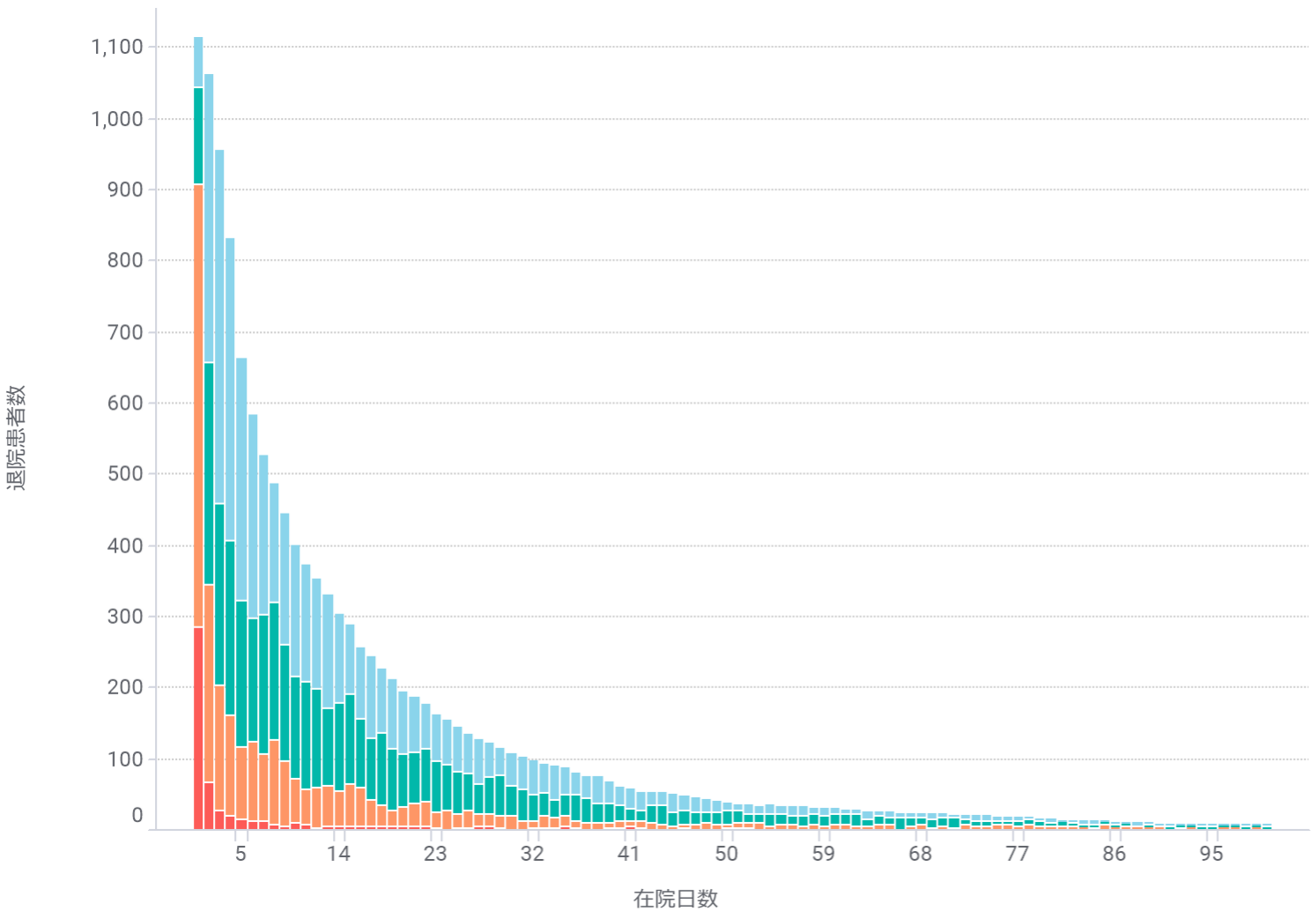
手術なし



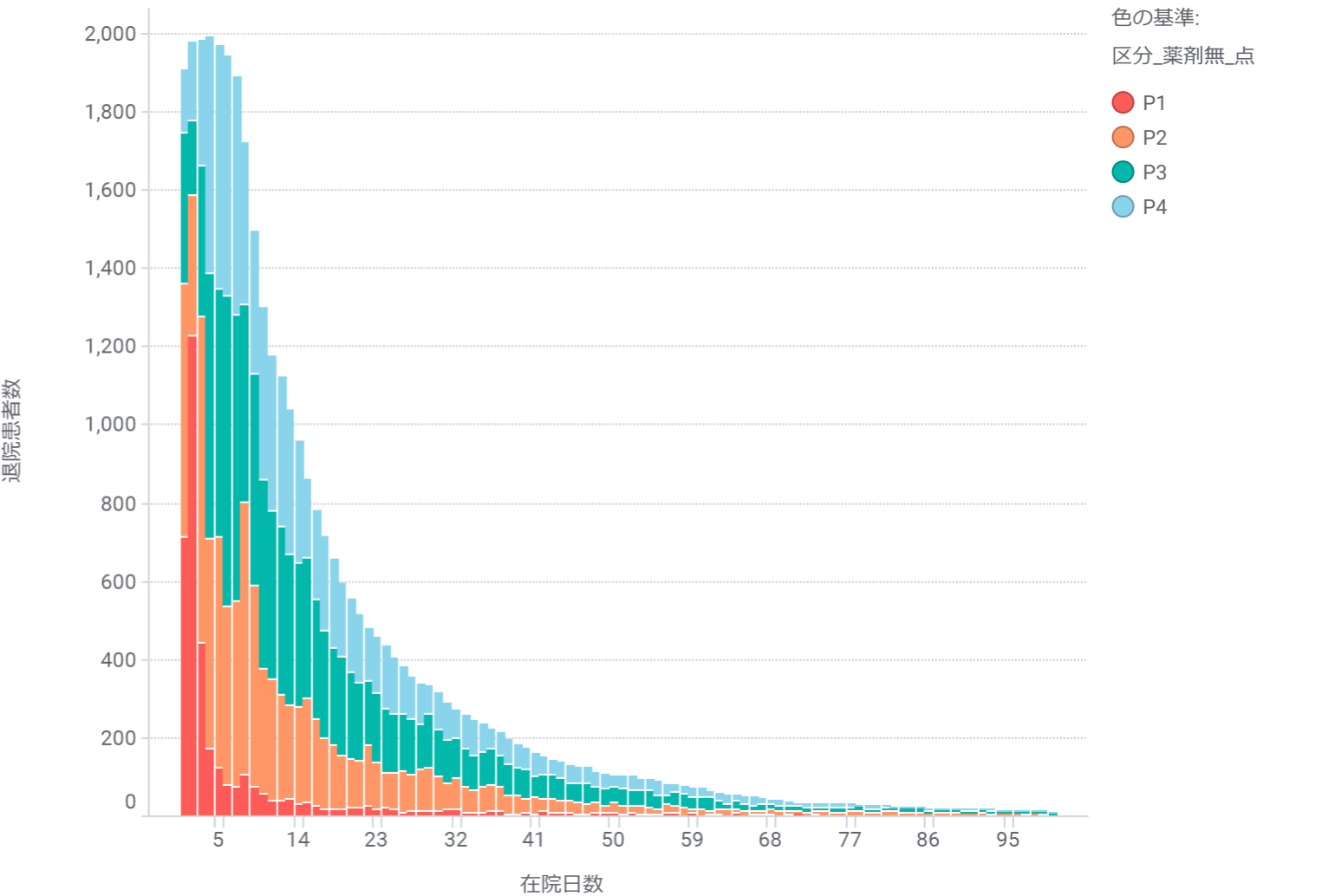
手術あり



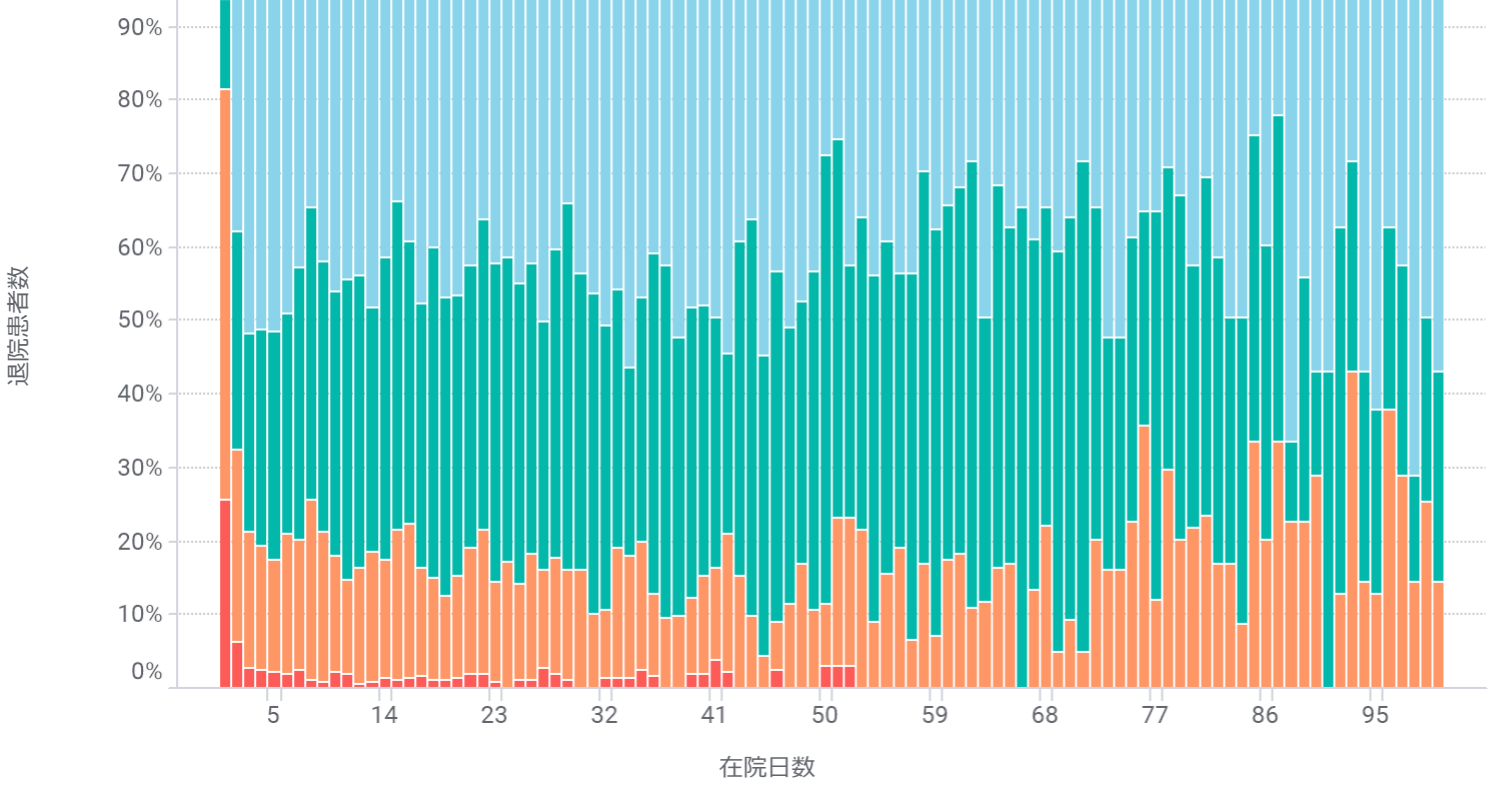
手術なし



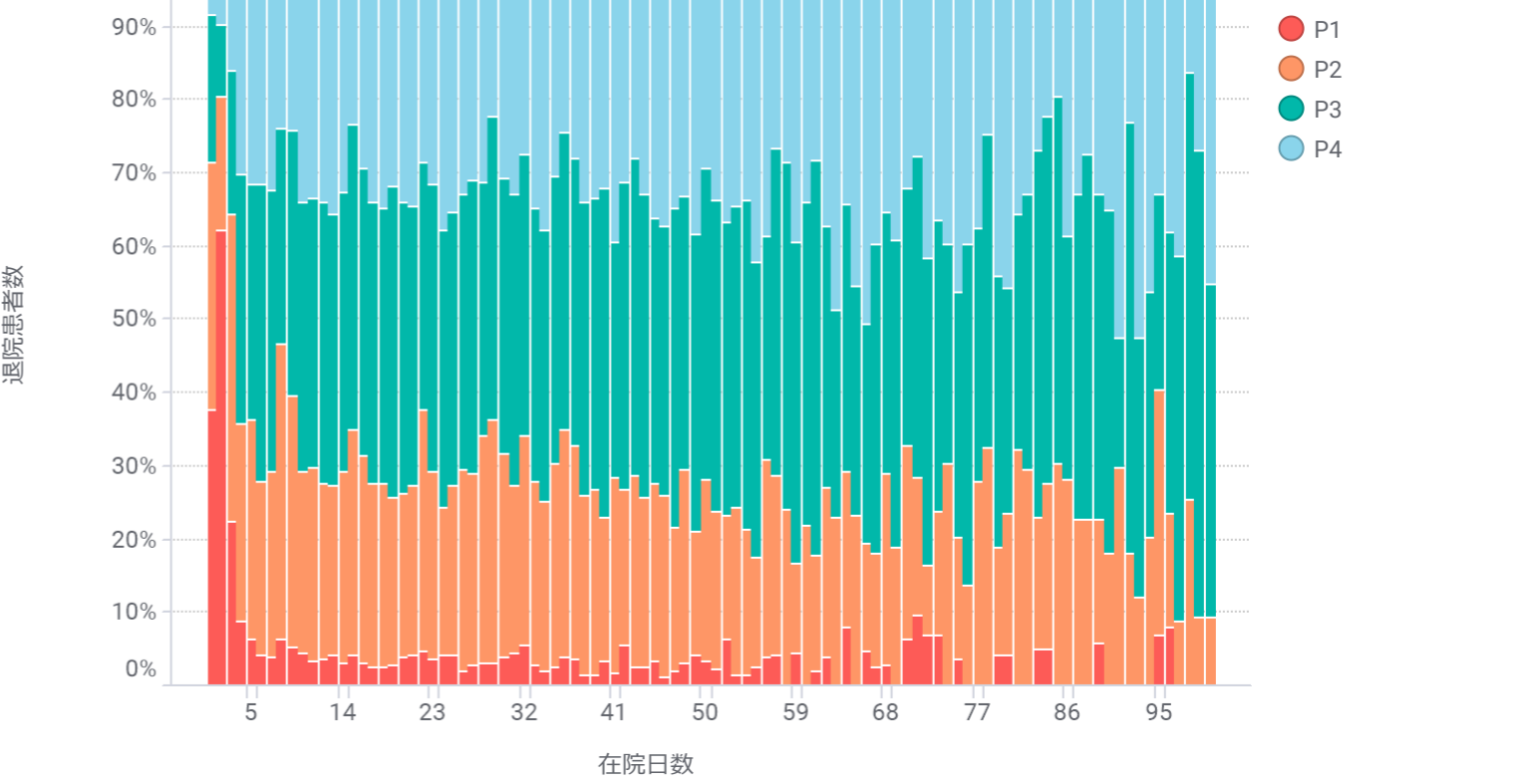
手術あり



手術なし

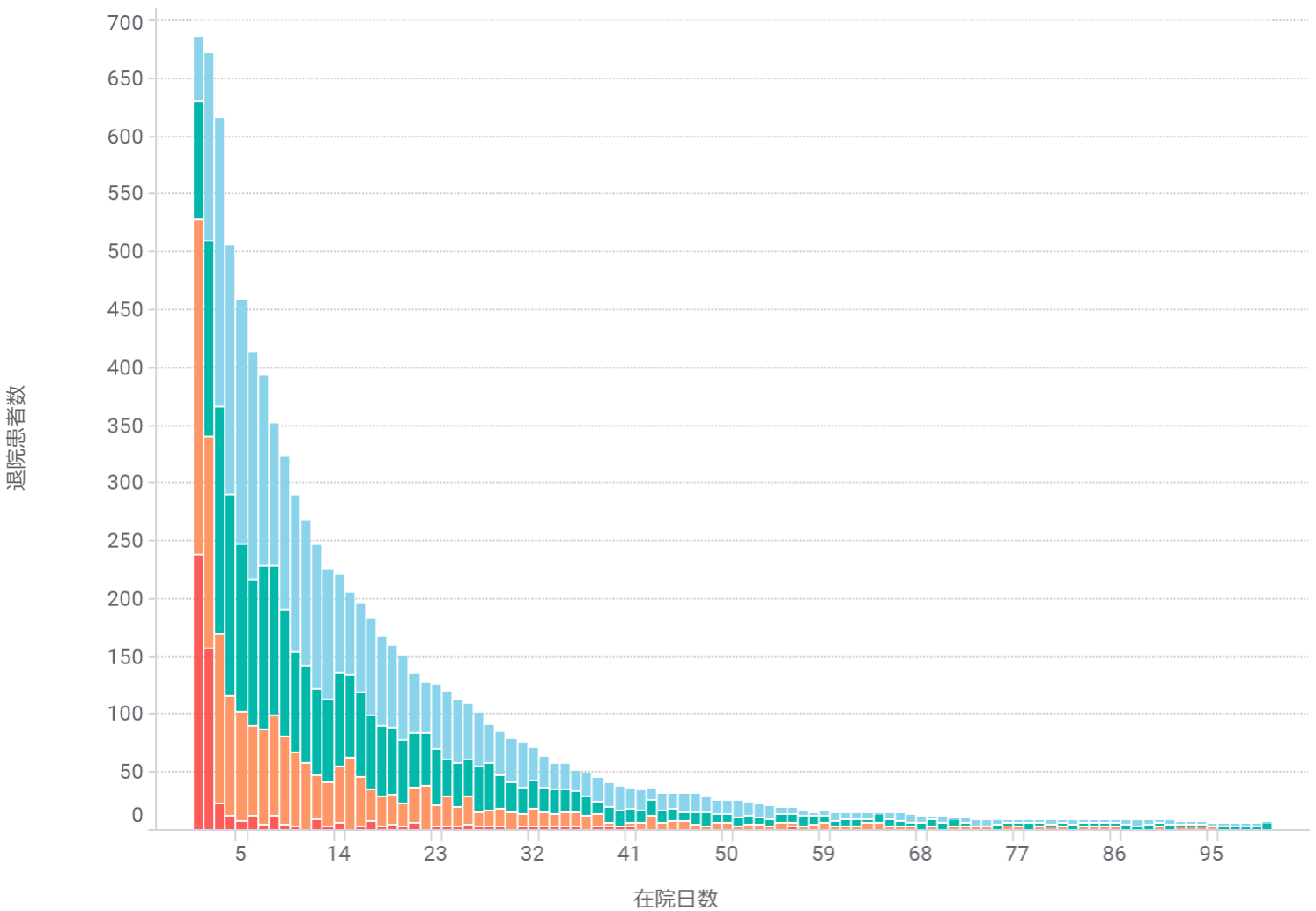


手術あり

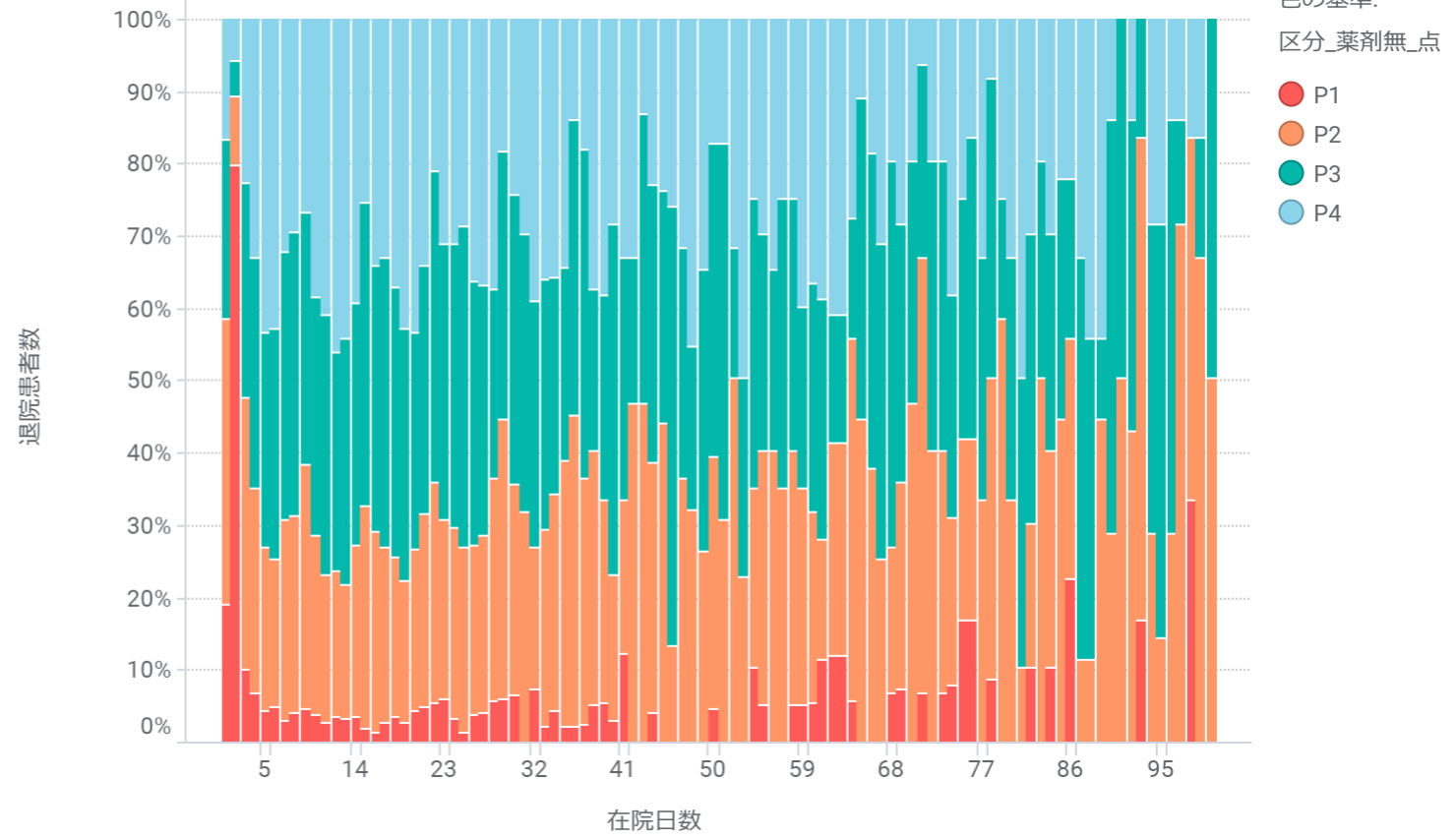
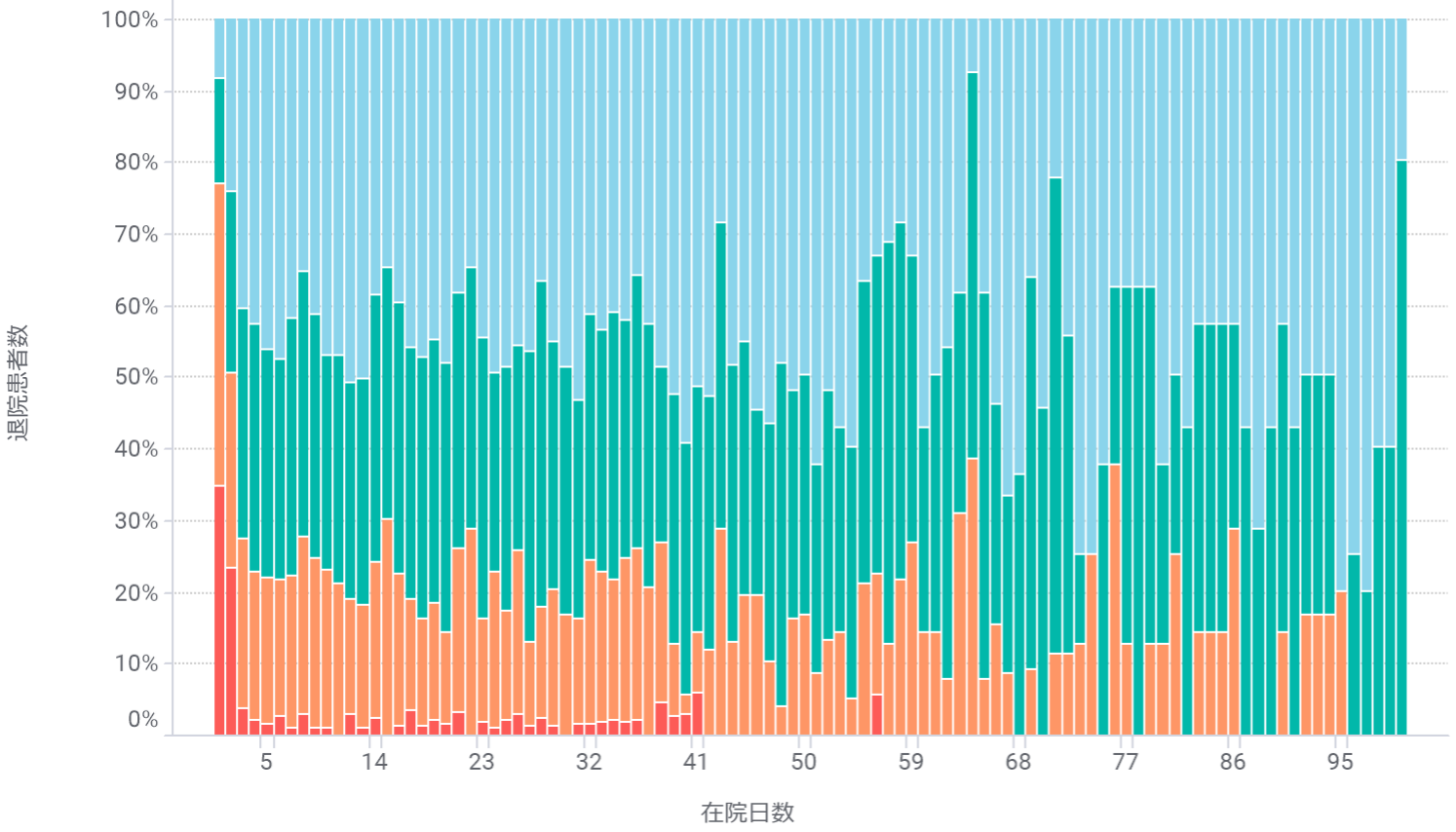
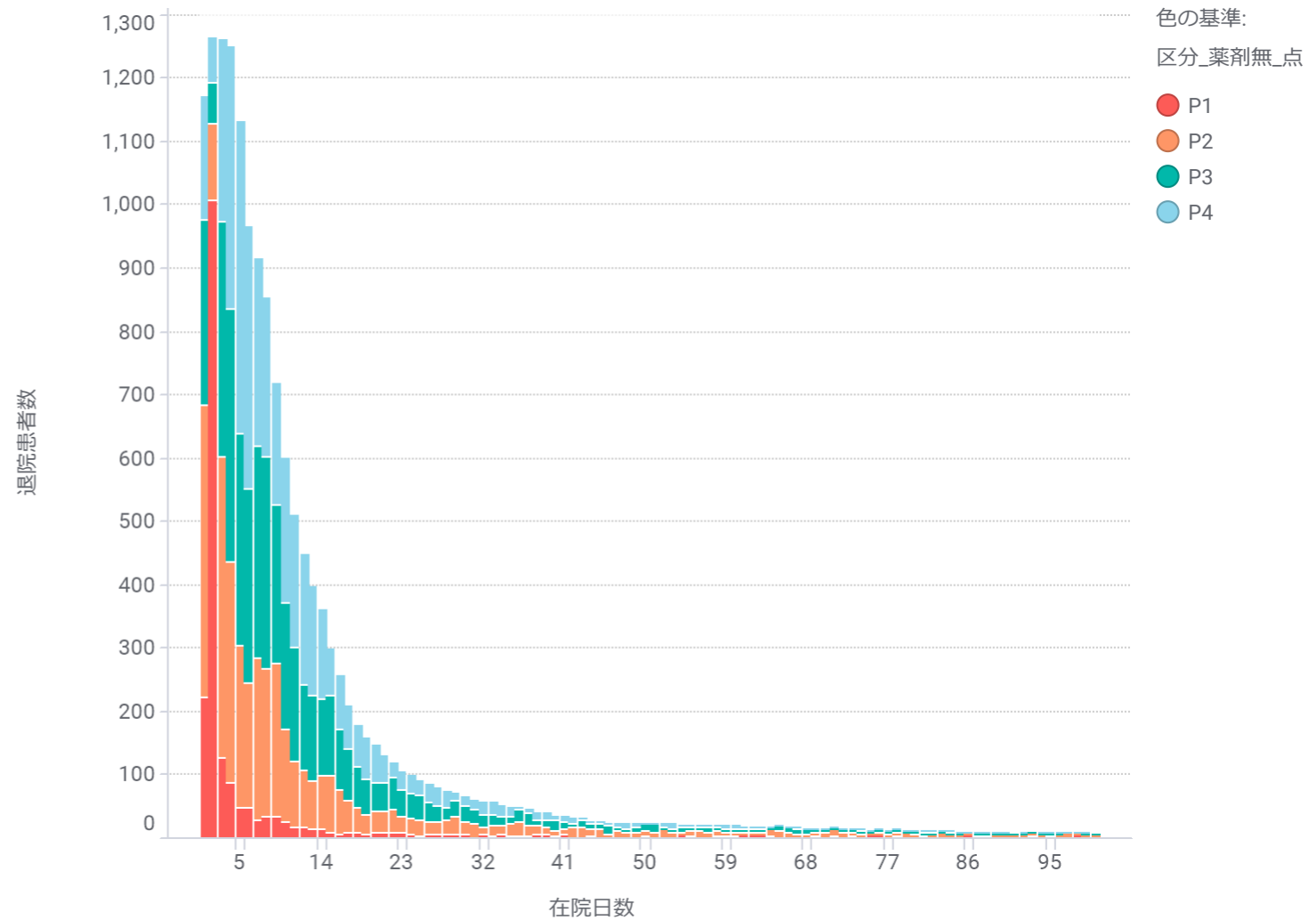


肝がん 060050:肝・肝内胆管の悪性腫瘍（続発性を含む）

手術なし

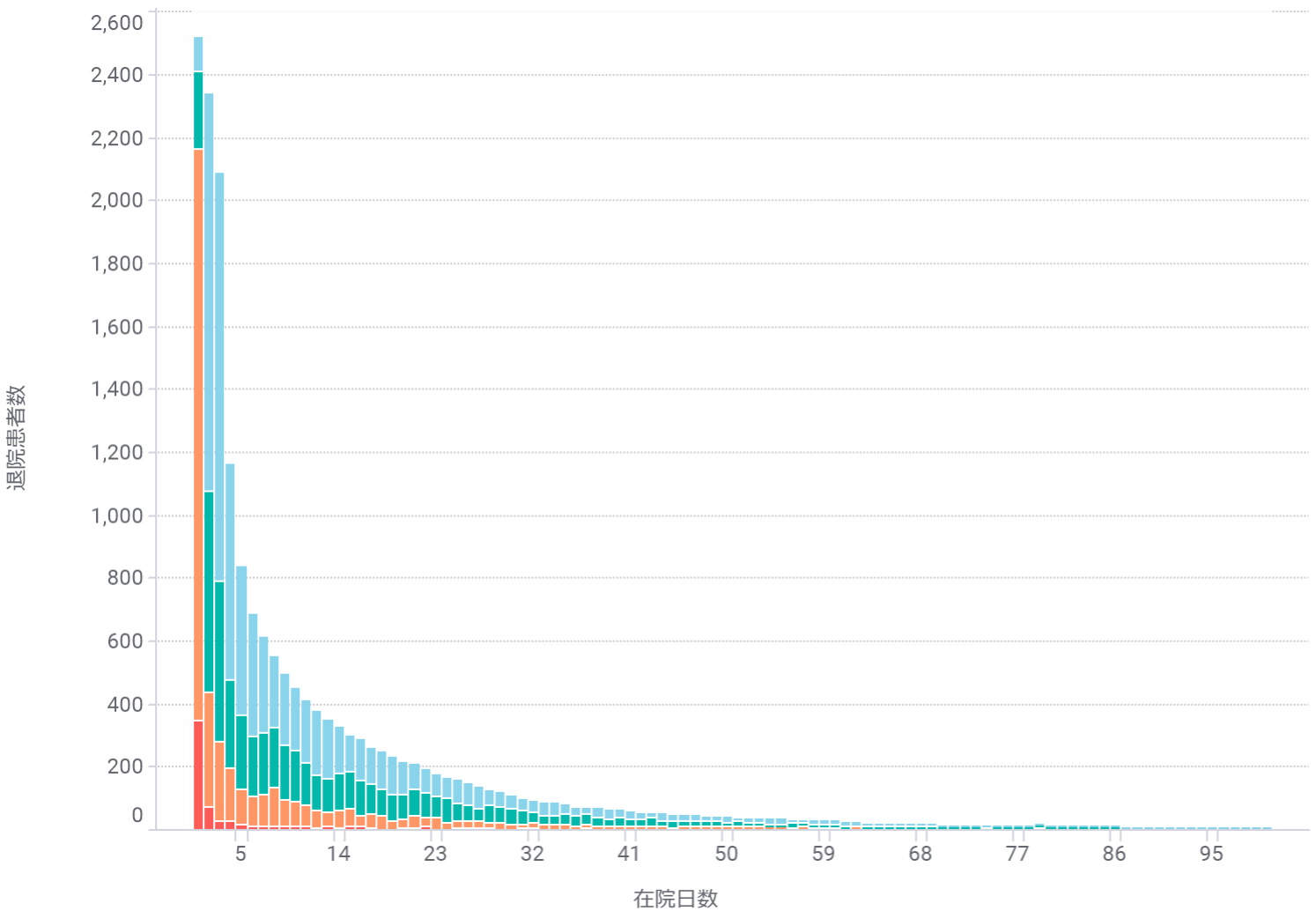


手術あり

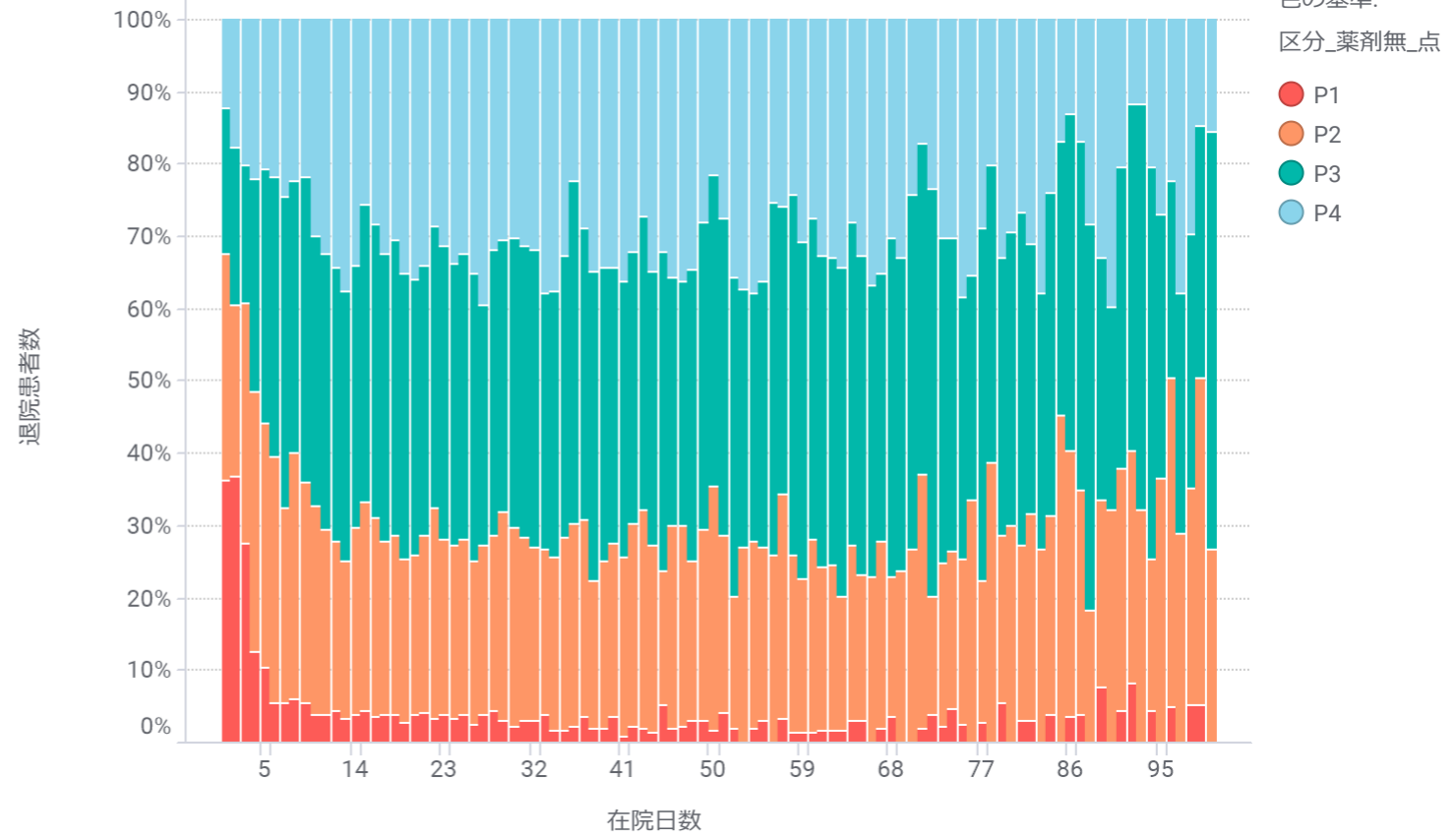
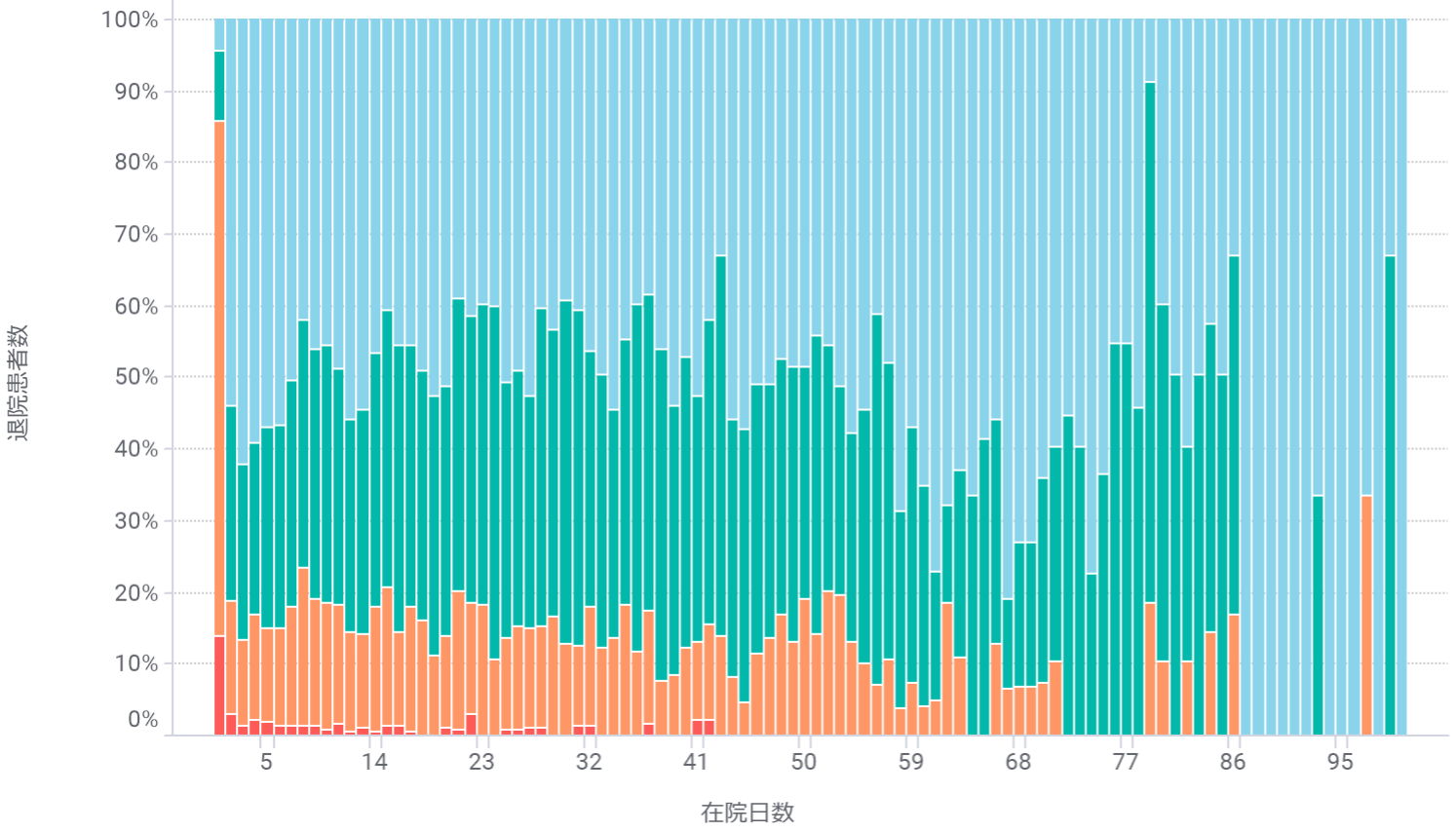
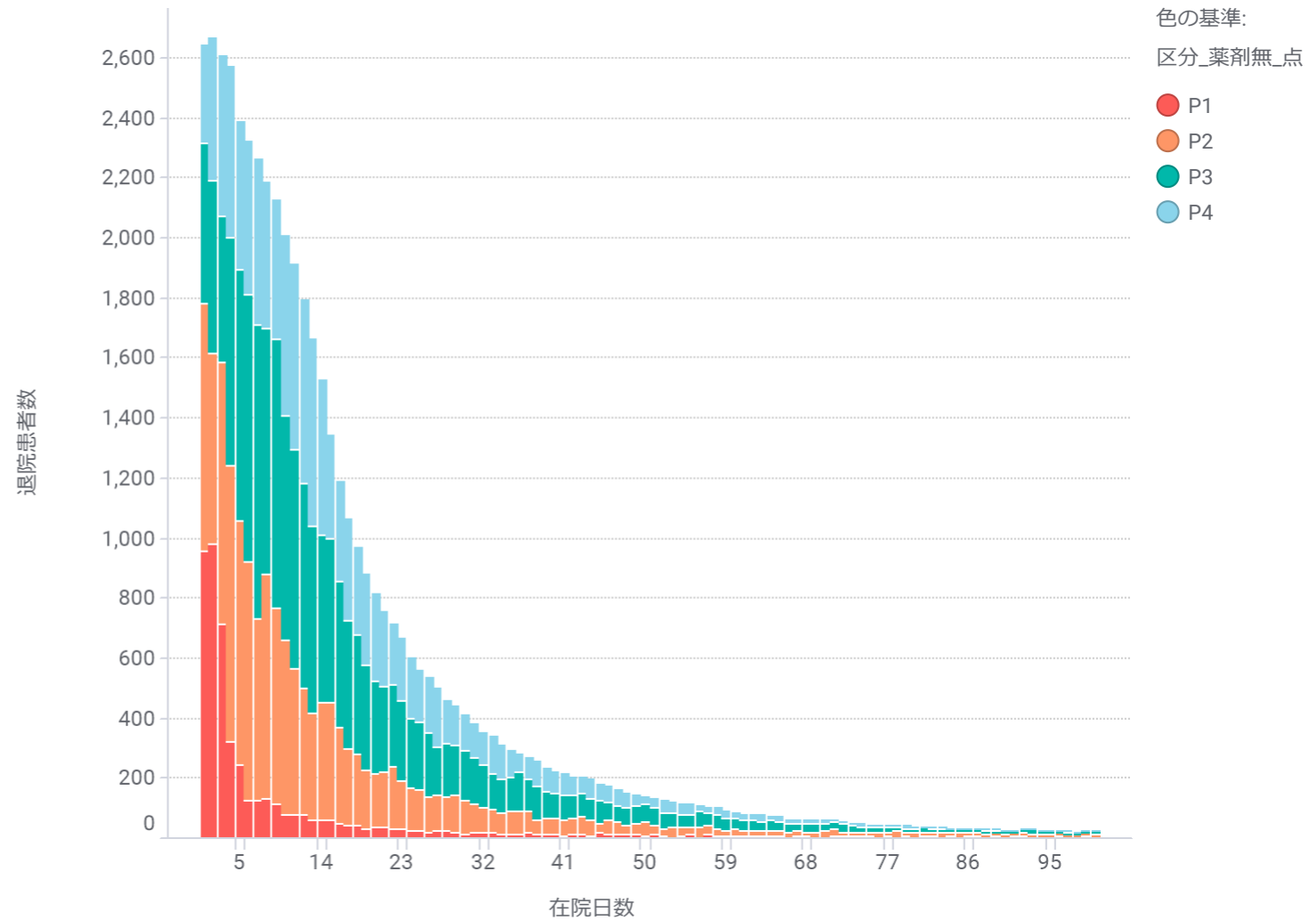


大腸がん 060035:結腸（虫垂を含む）の悪性腫瘍、060040:直腸肛門（直腸S状部から肛門）の悪性腫瘍

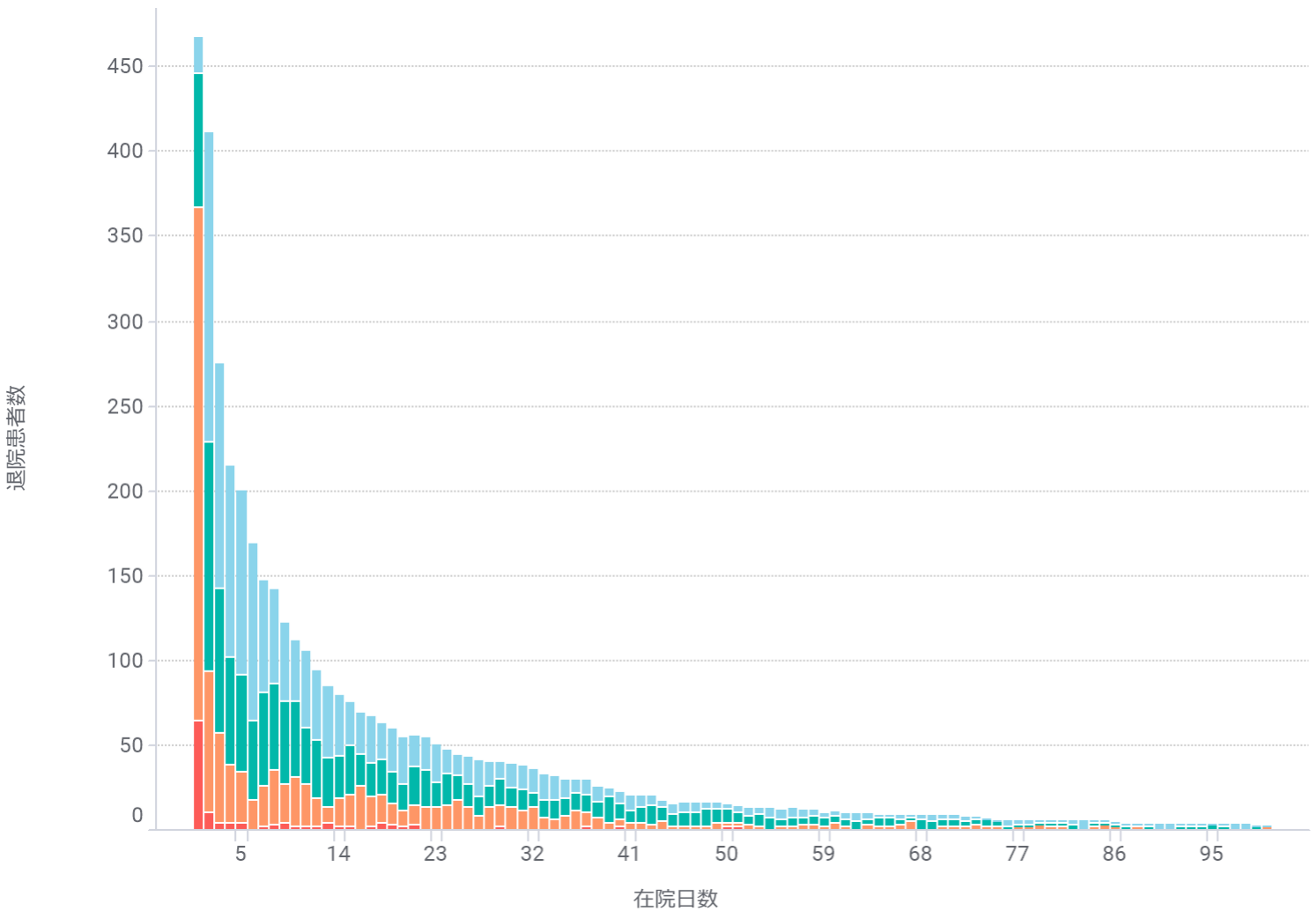
手術なし



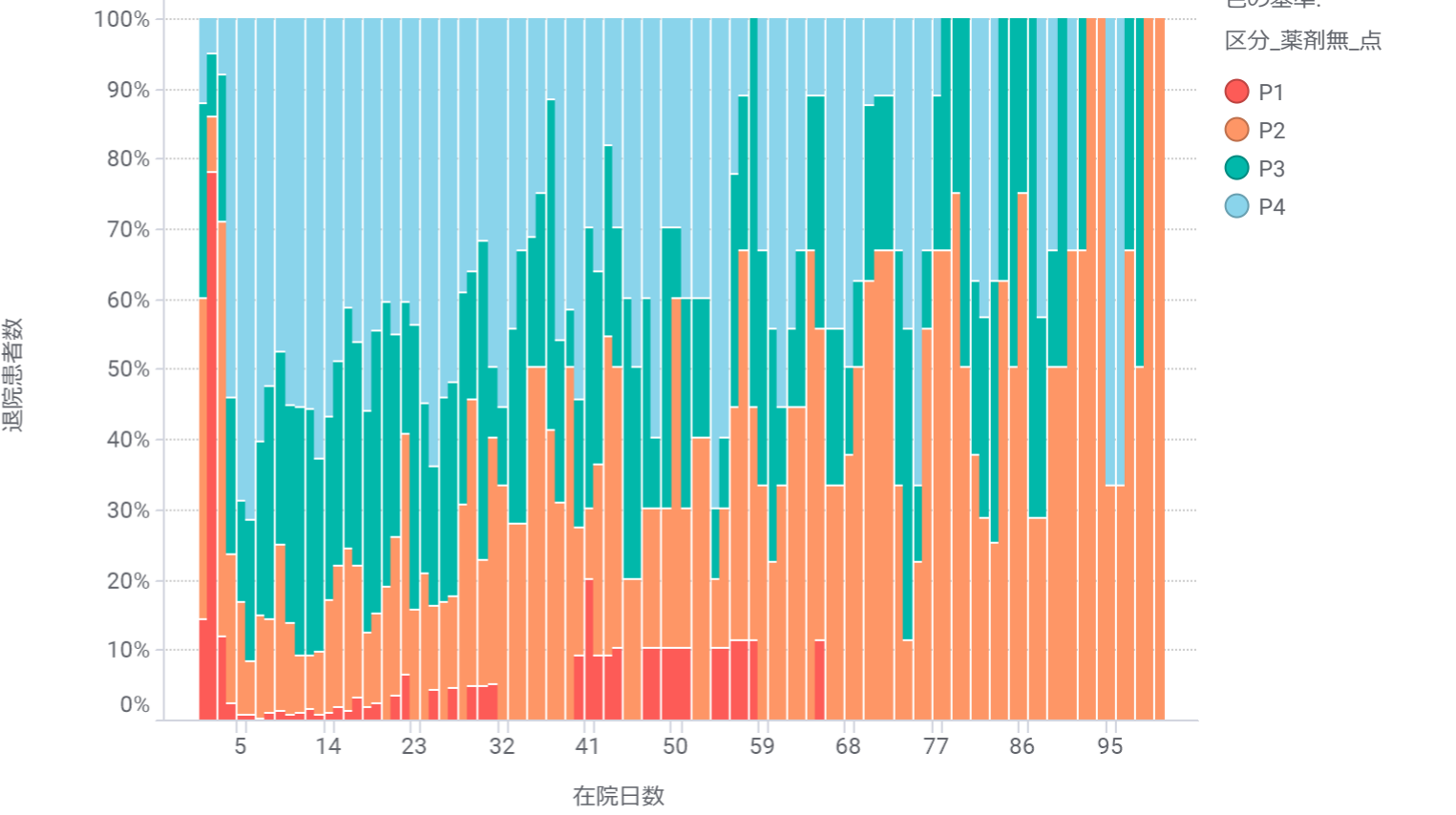
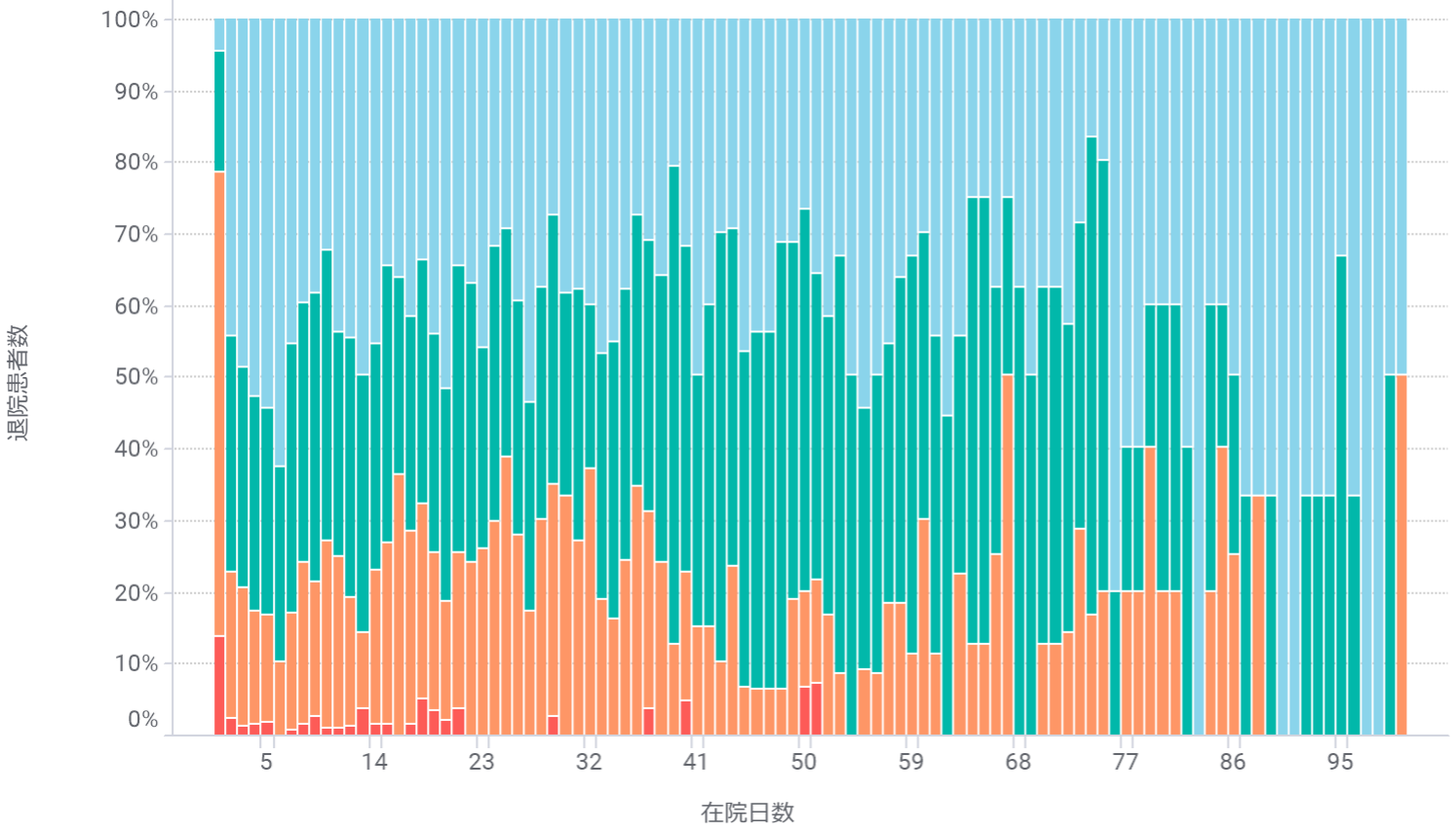
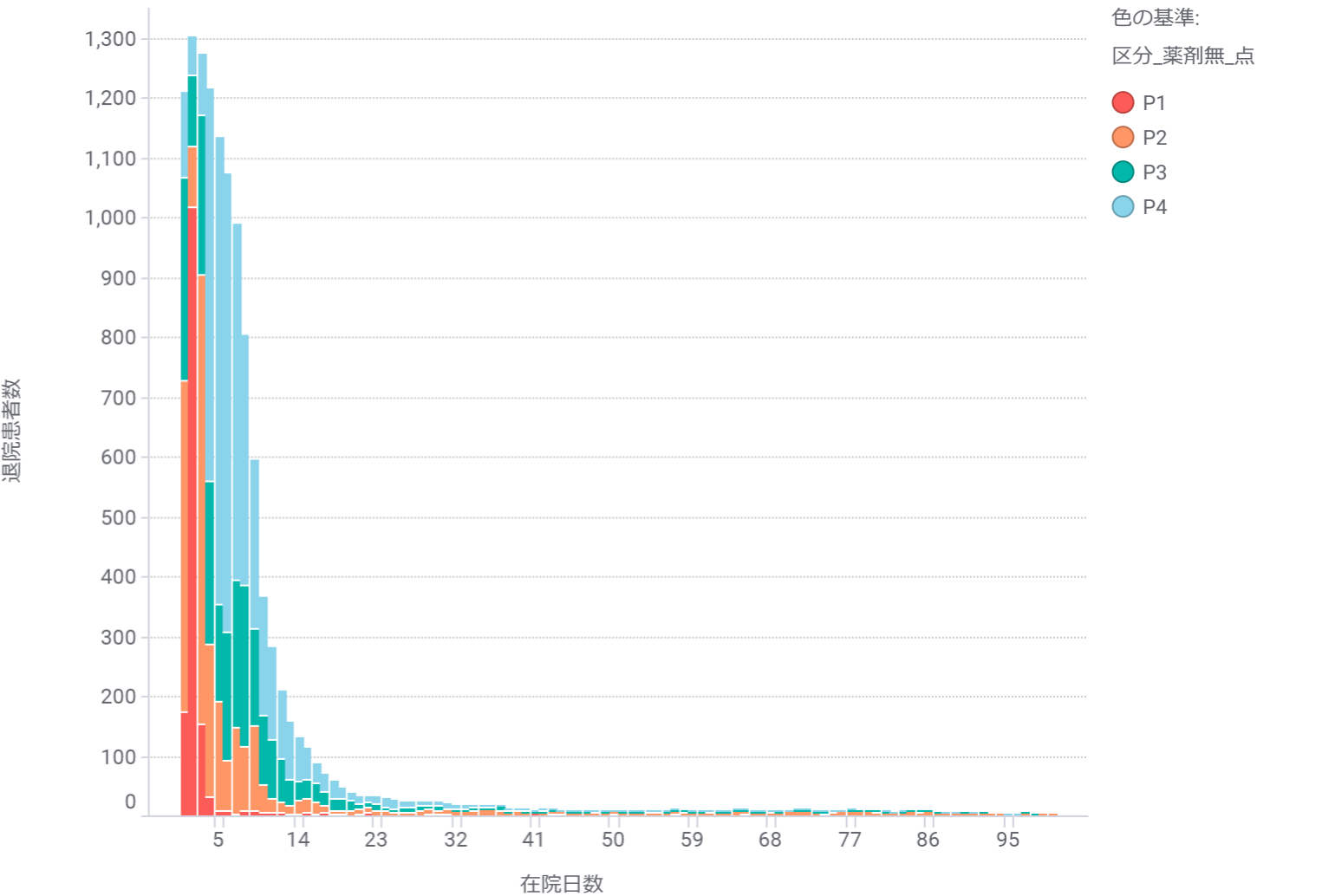
手術あり



手術なし

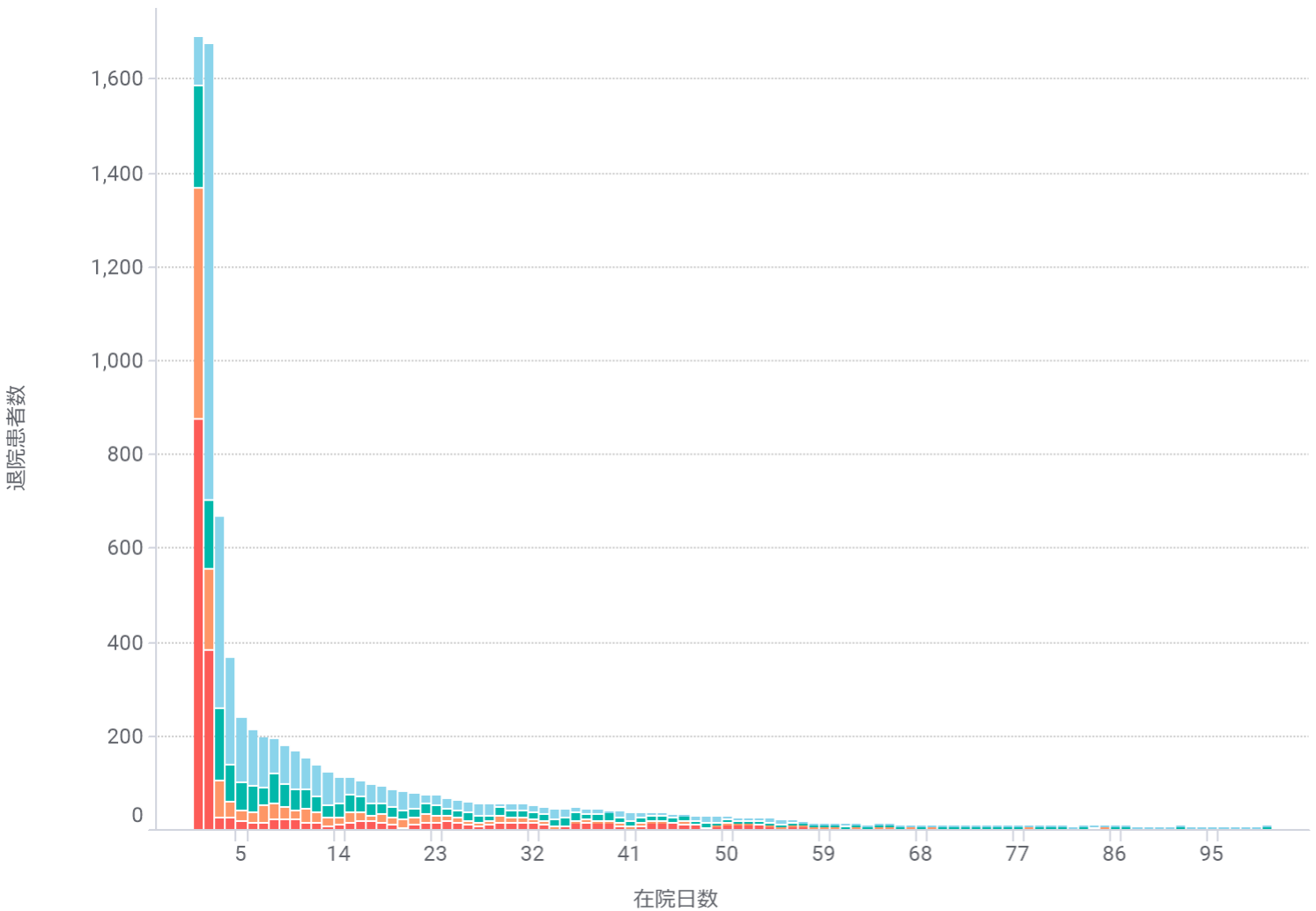


手術あり

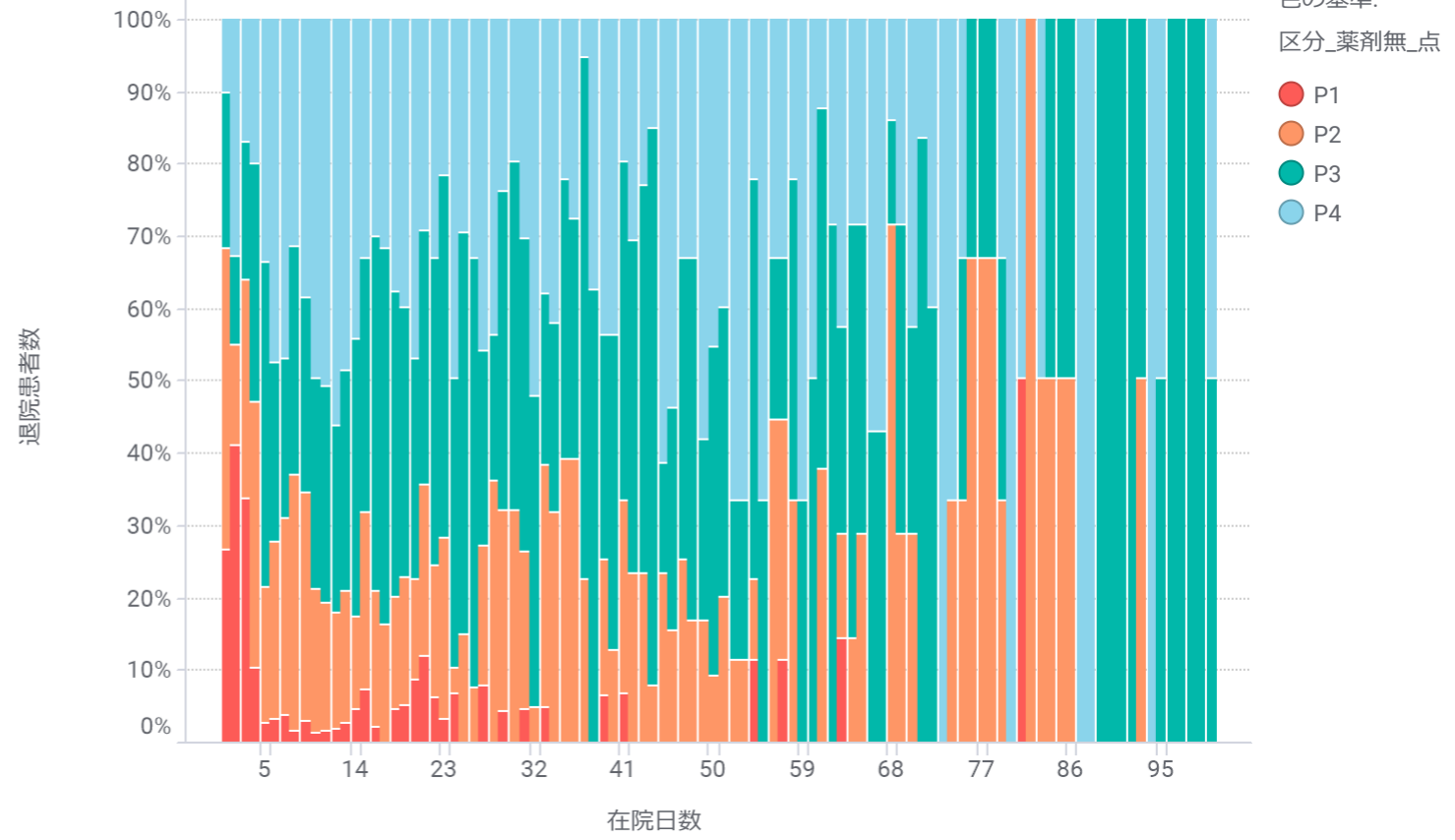
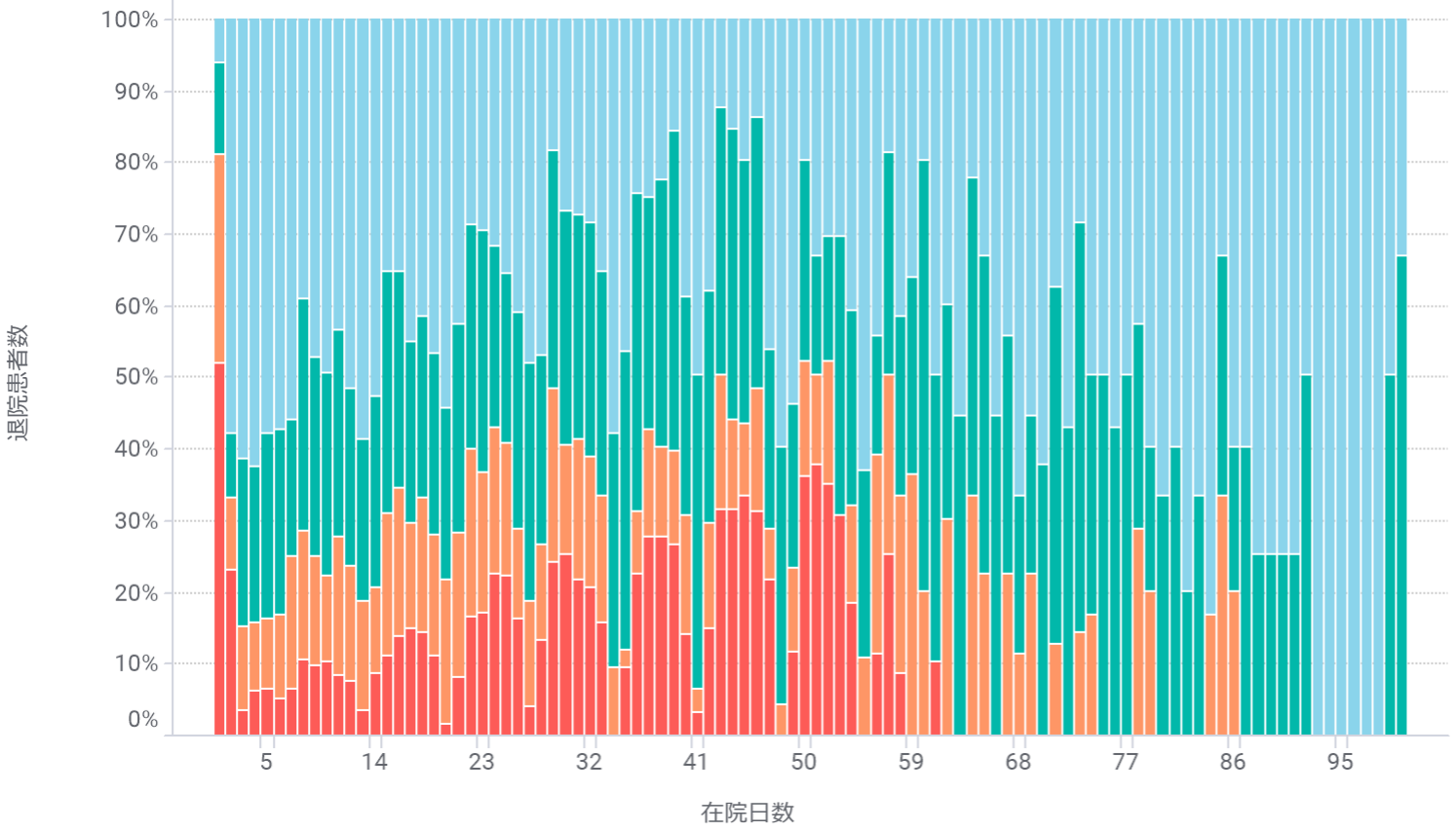
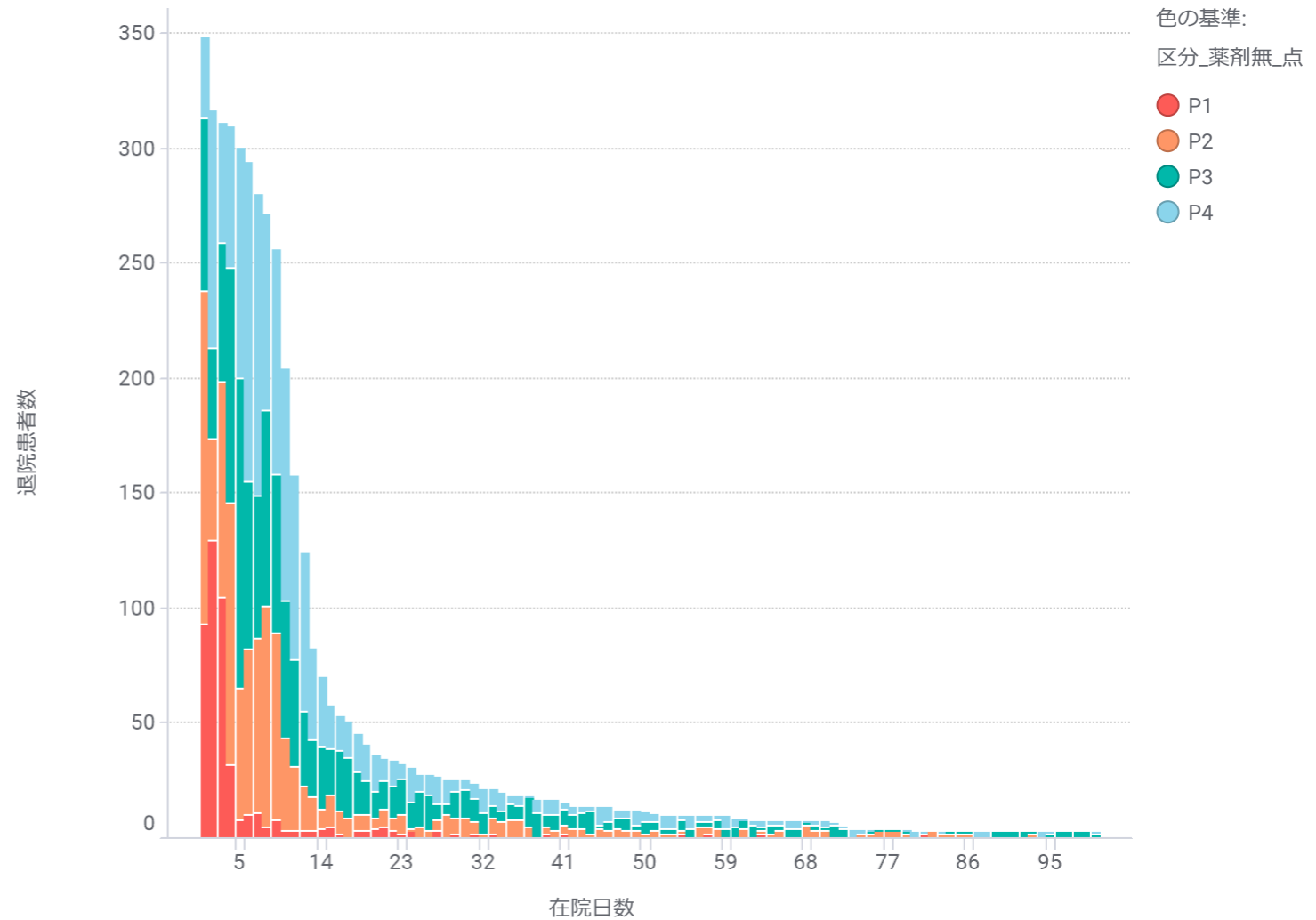




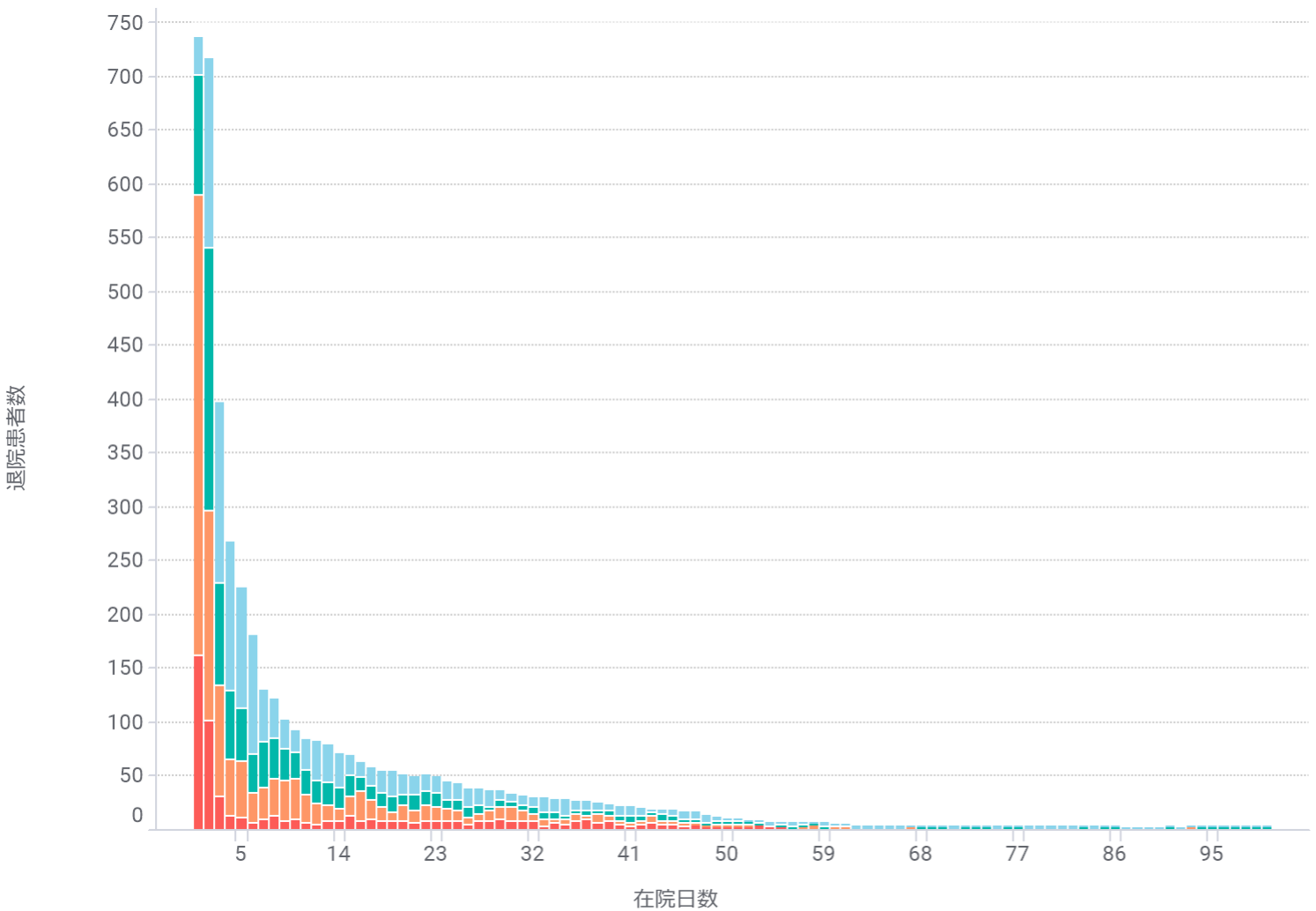
手術なし



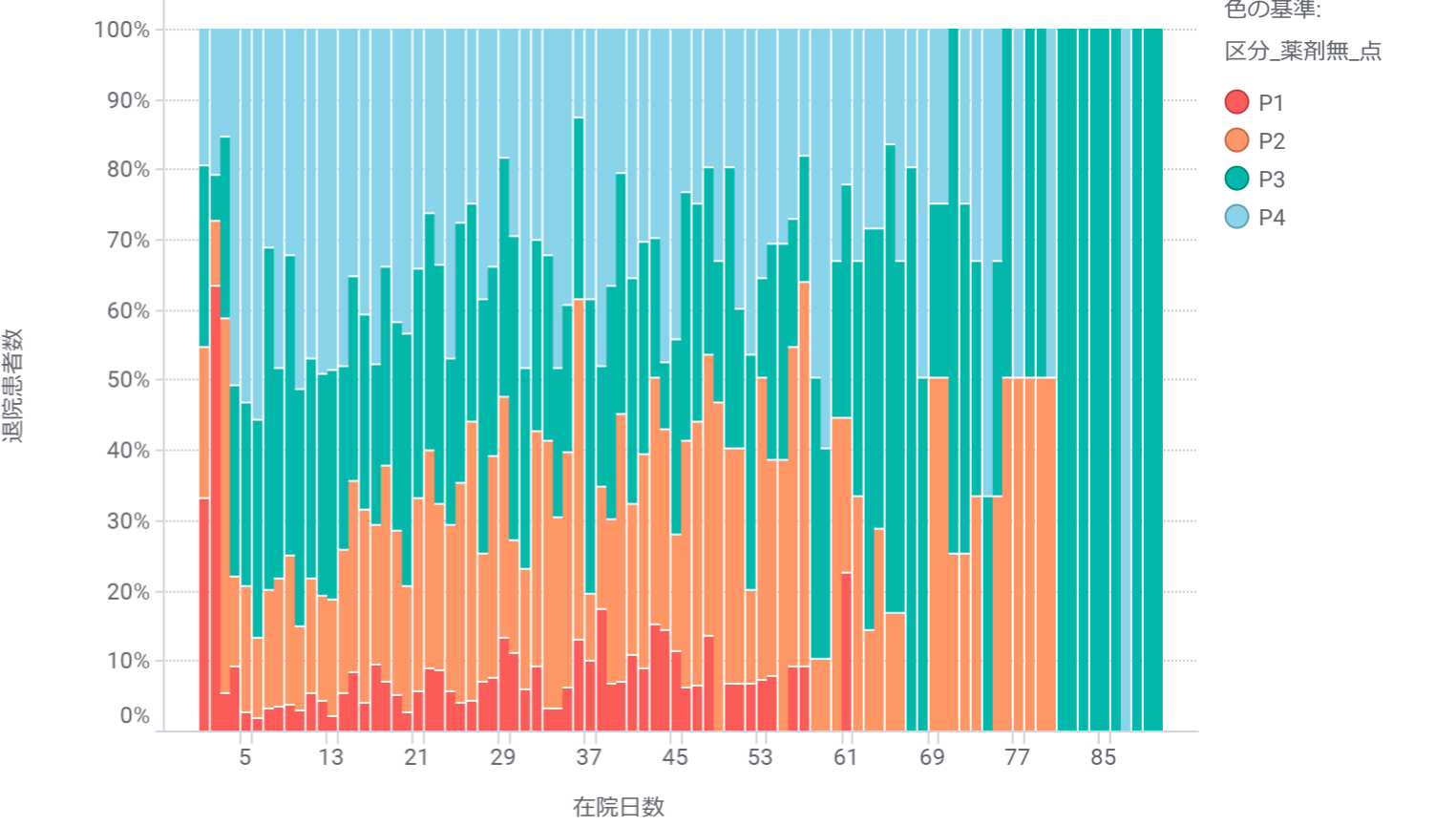
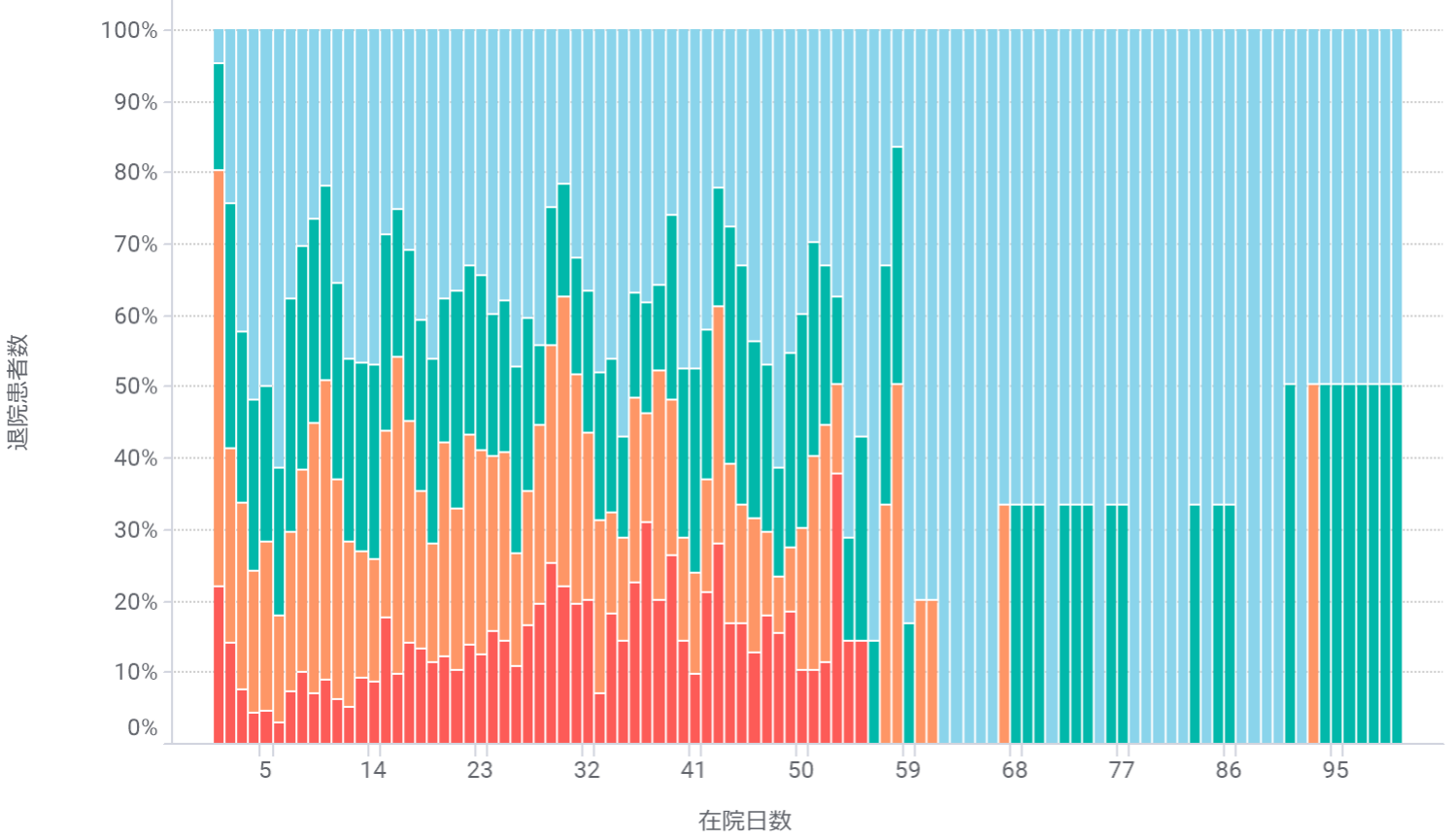
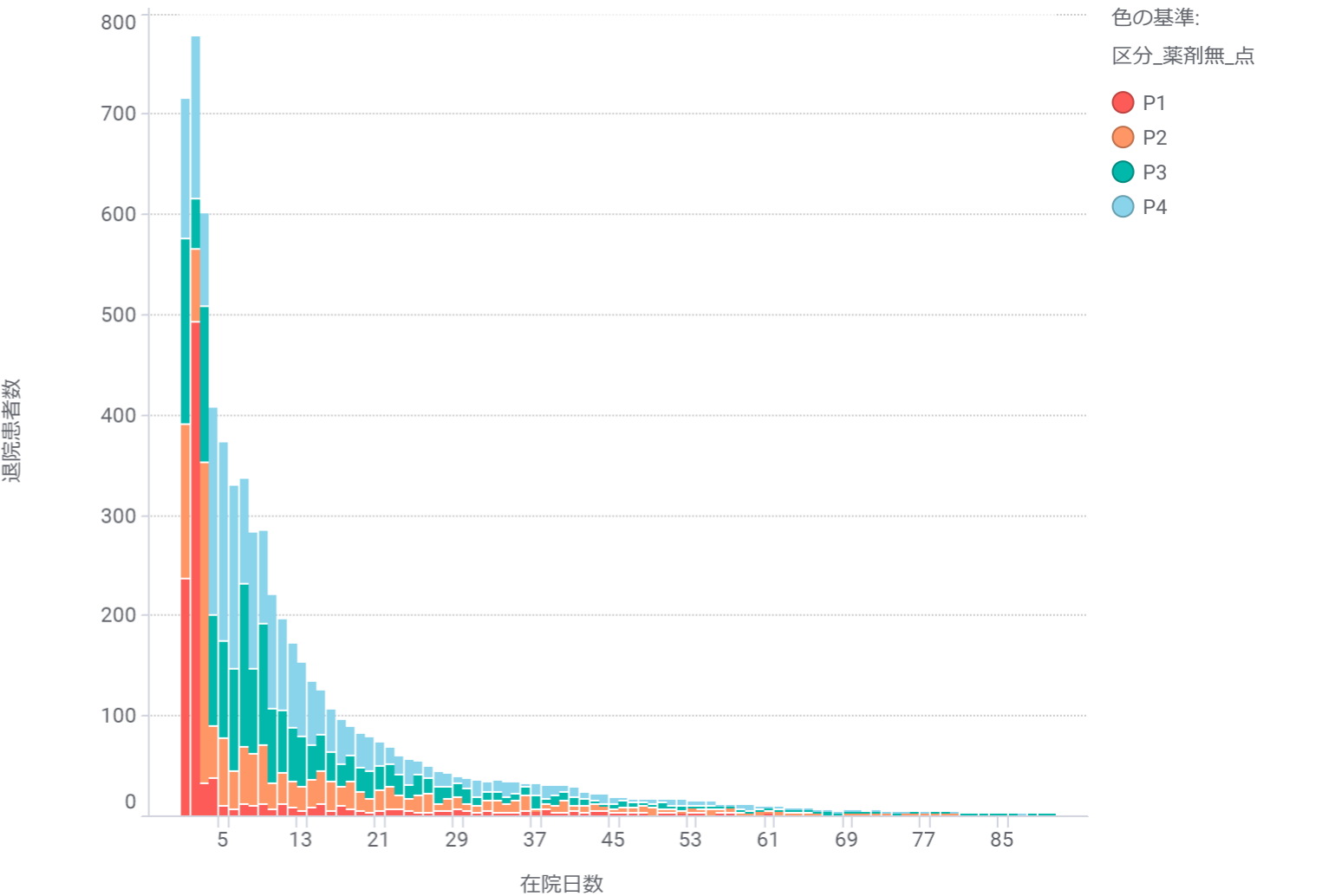
手術あり



手術なし



手術あり



色の基準:  
区分\_薬剤無\_点

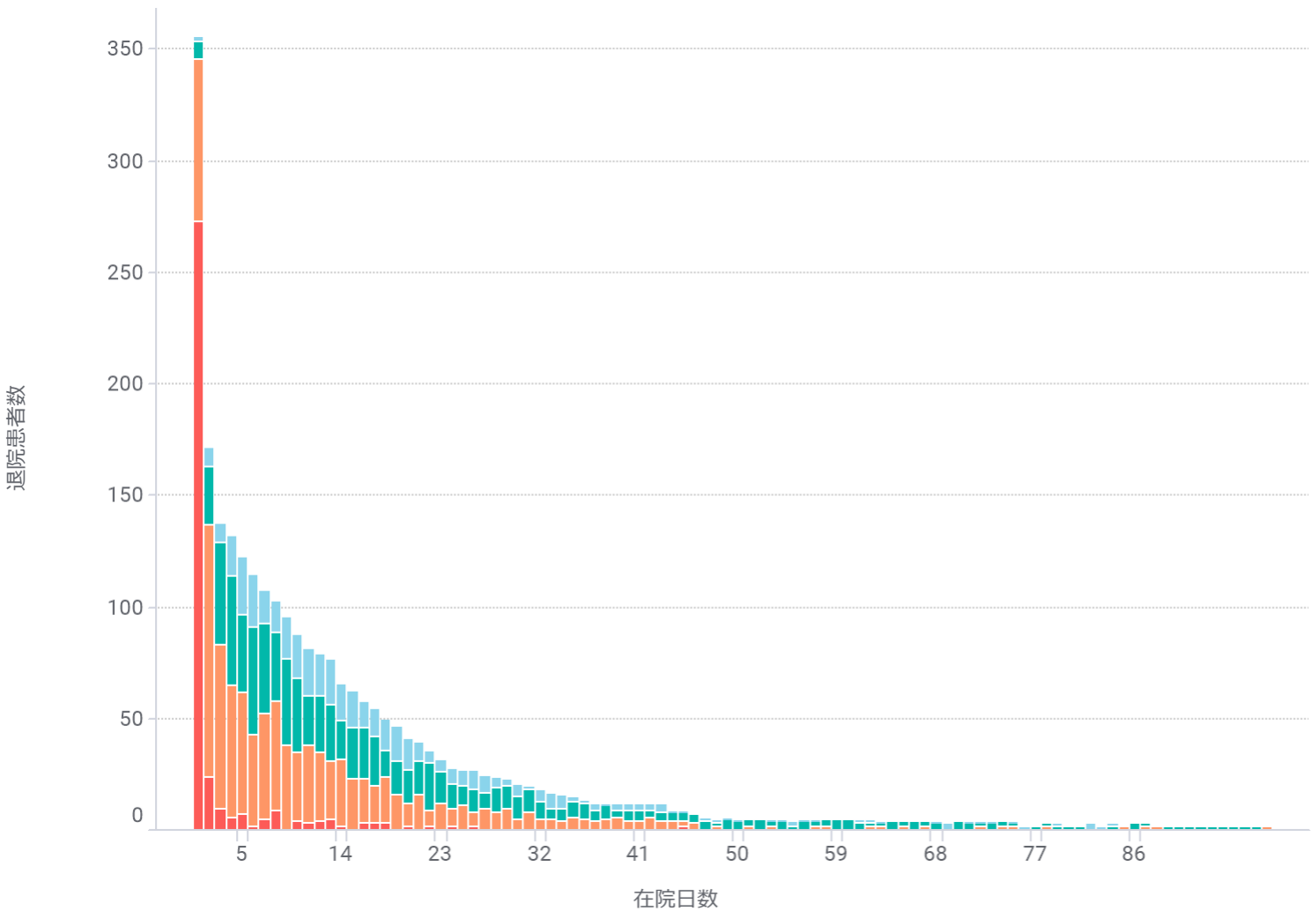
- P1
- P2
- P3
- P4

色の基準:  
区分\_薬剤無\_点

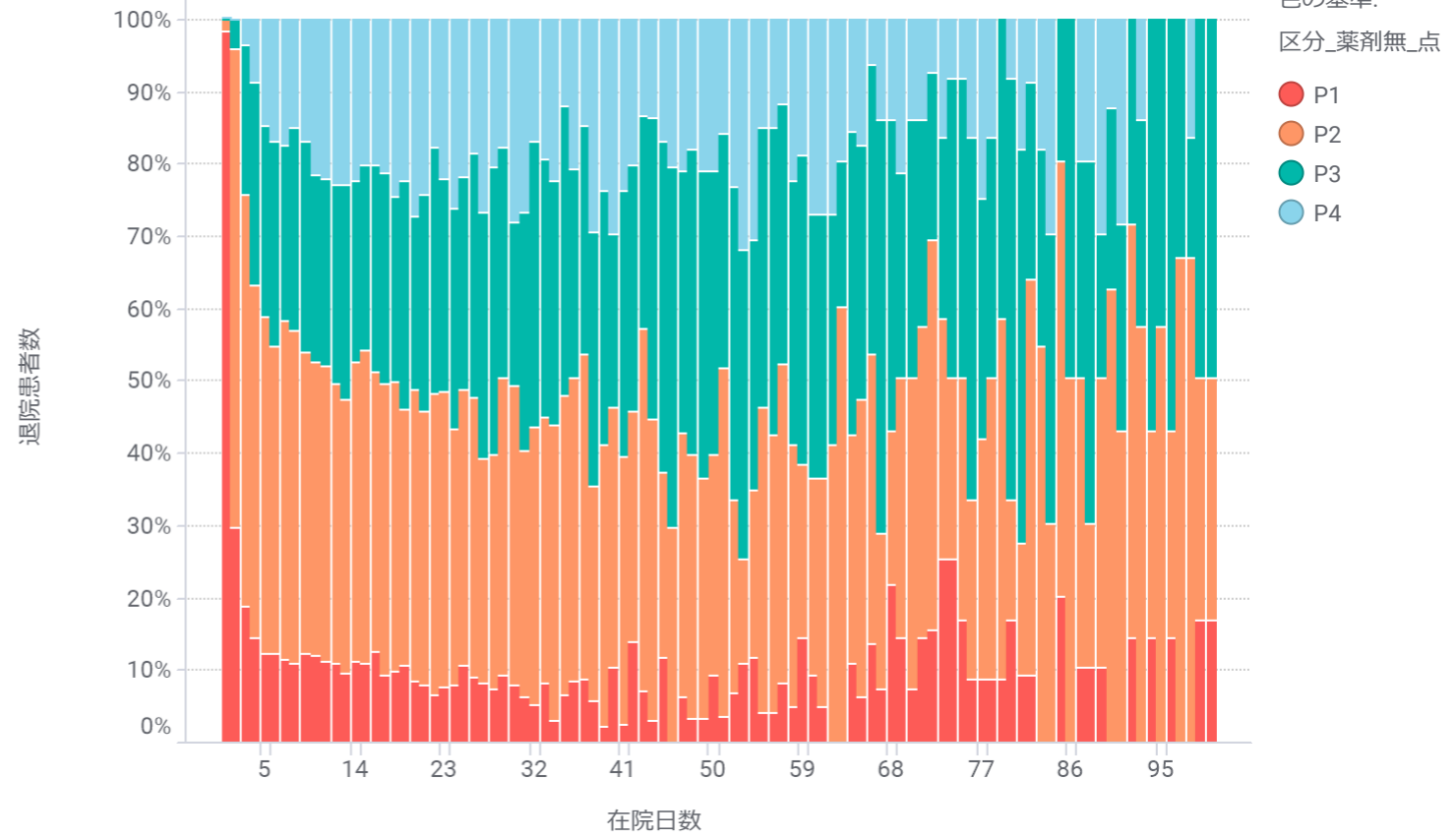
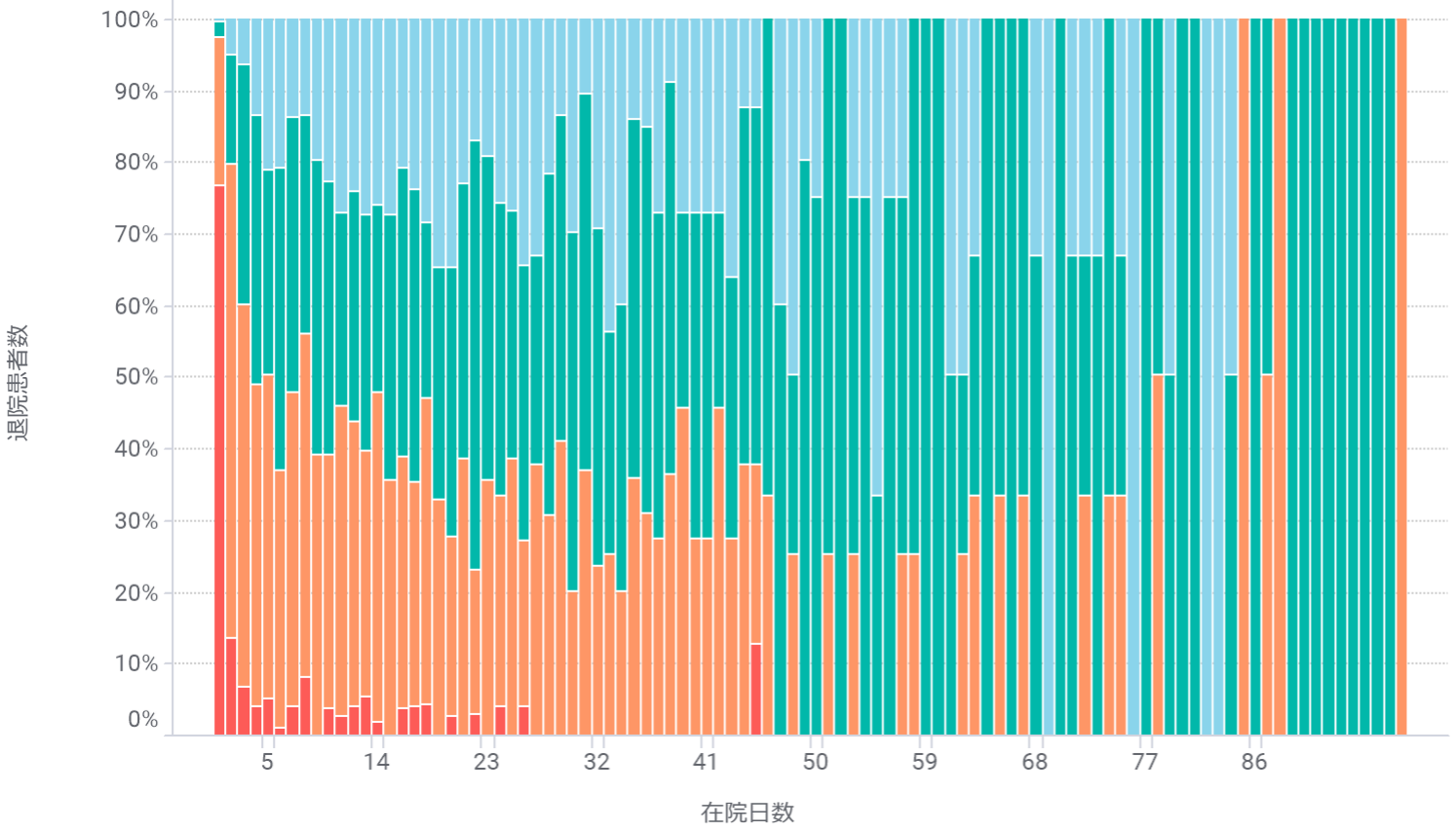
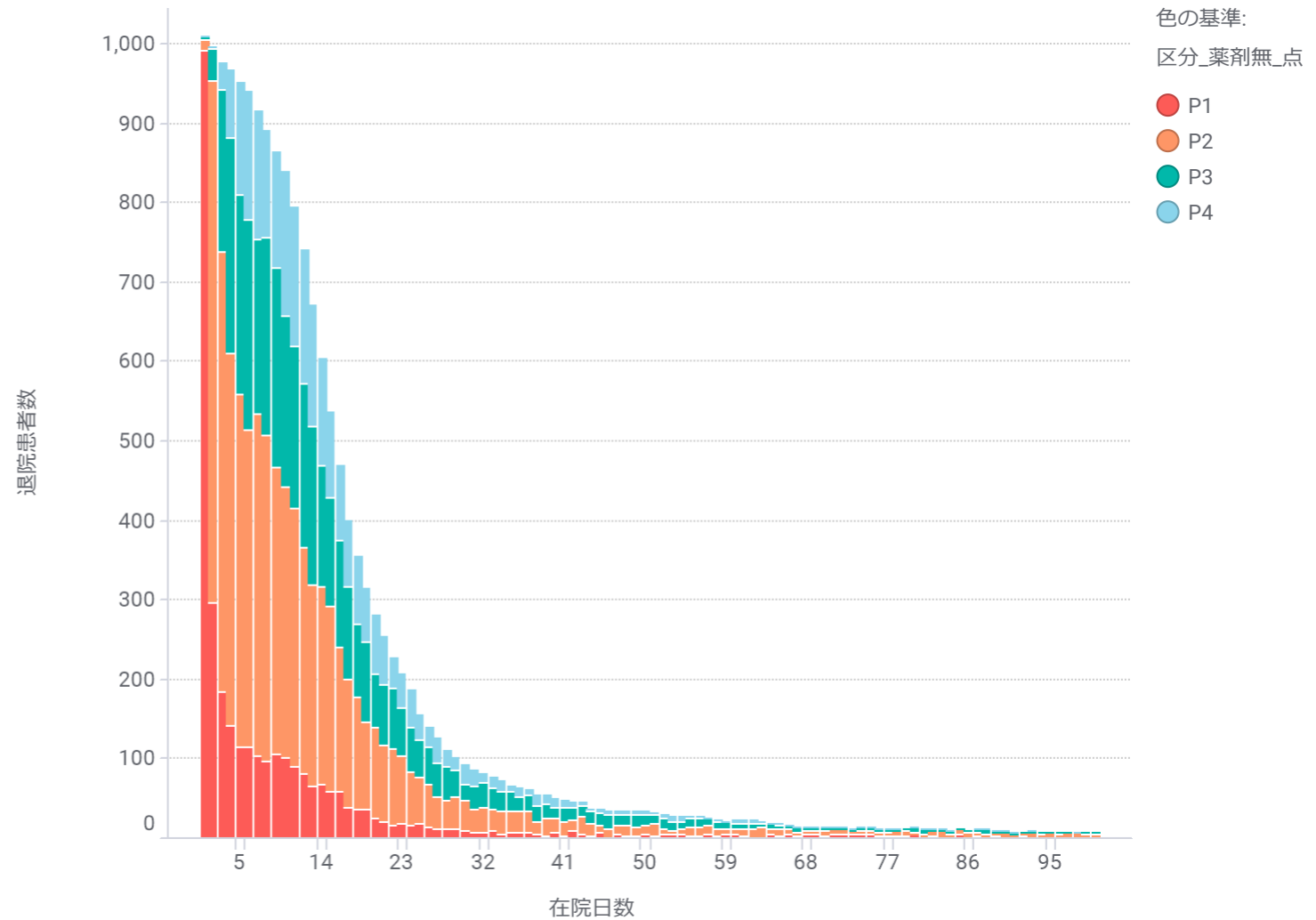
- P1
- P2
- P3
- P4

心疾患① 050030:急性心筋梗塞（続発性合併症を含む）、再発性心筋梗塞

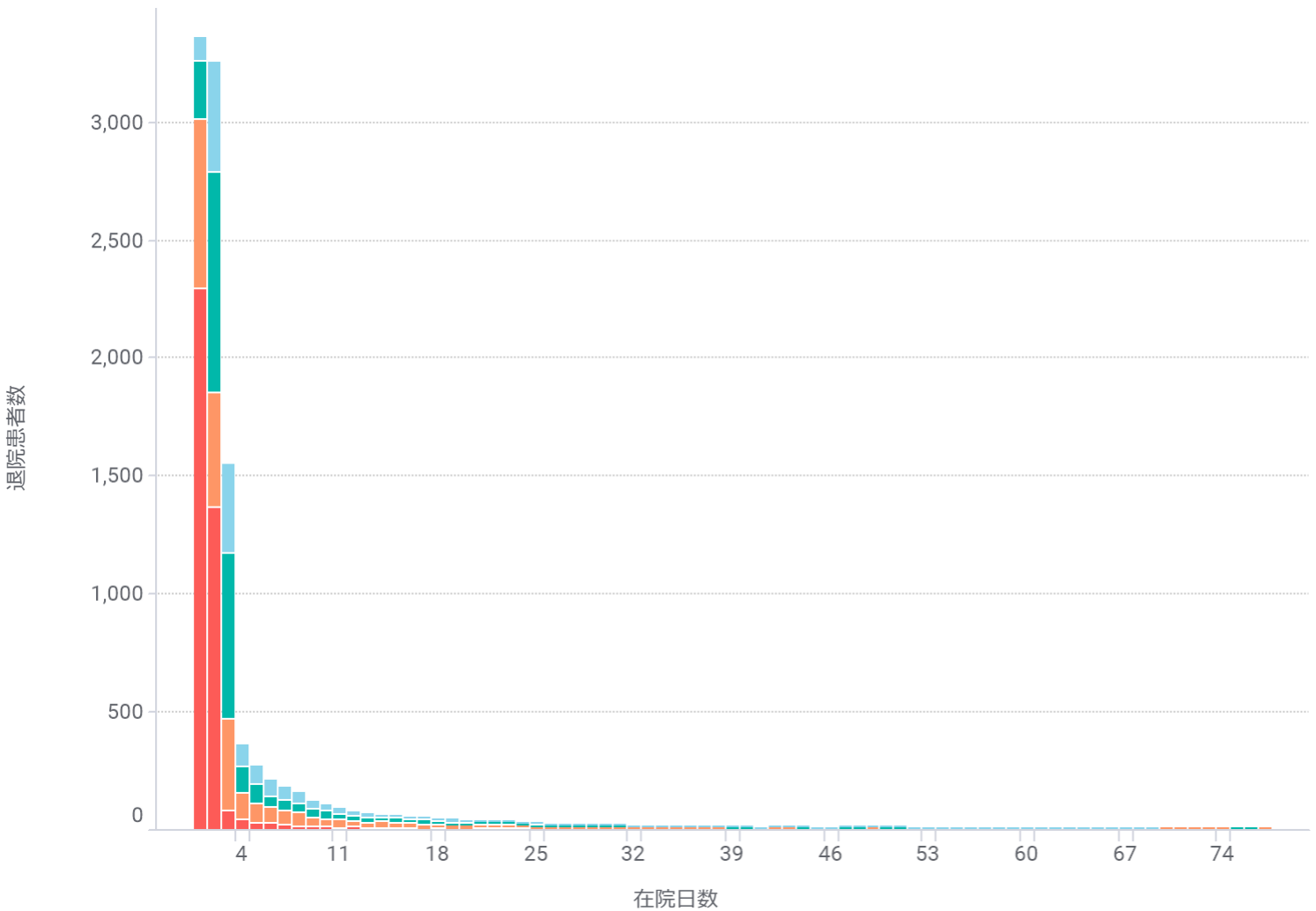
手術なし



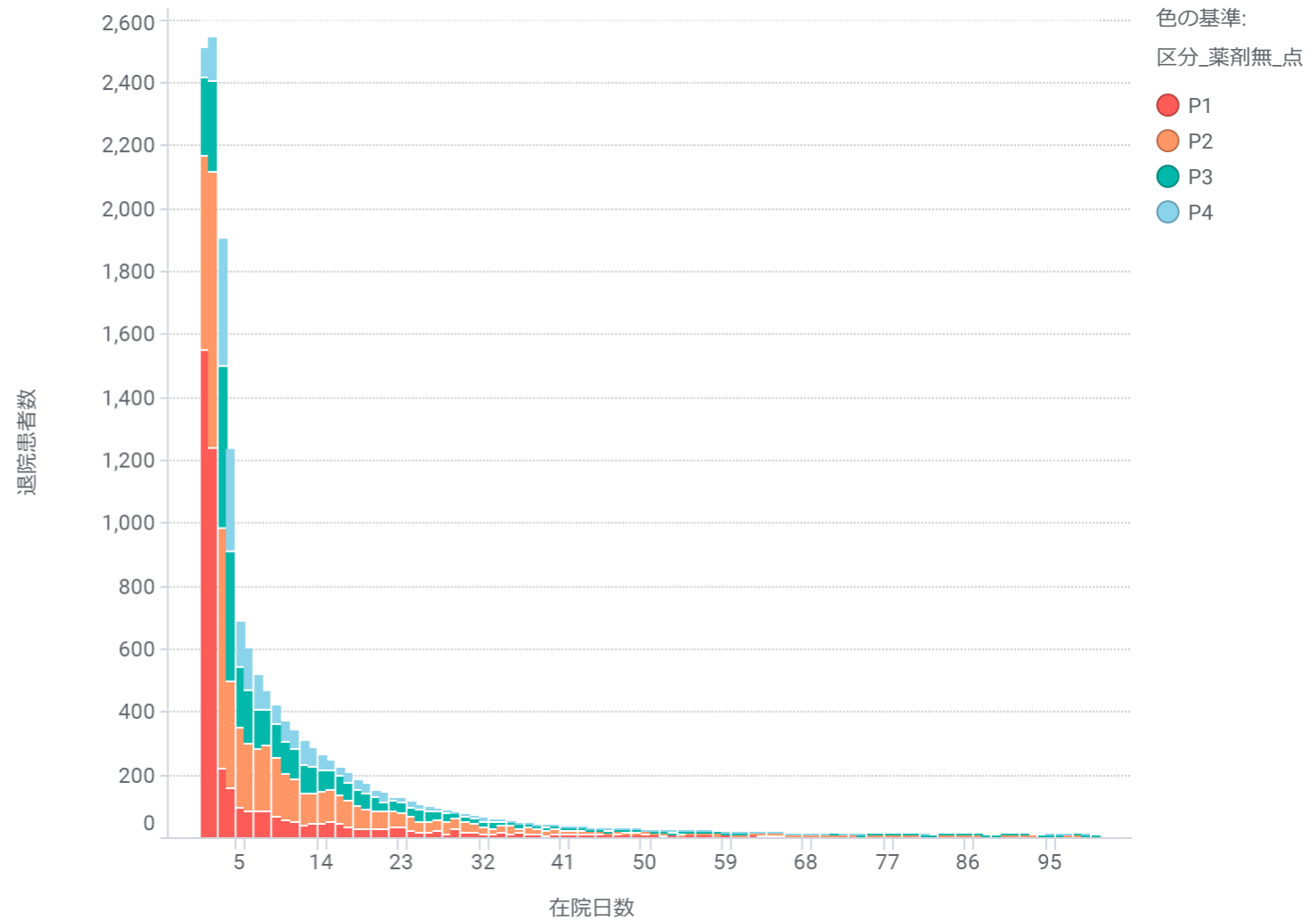
手術あり



手術なし

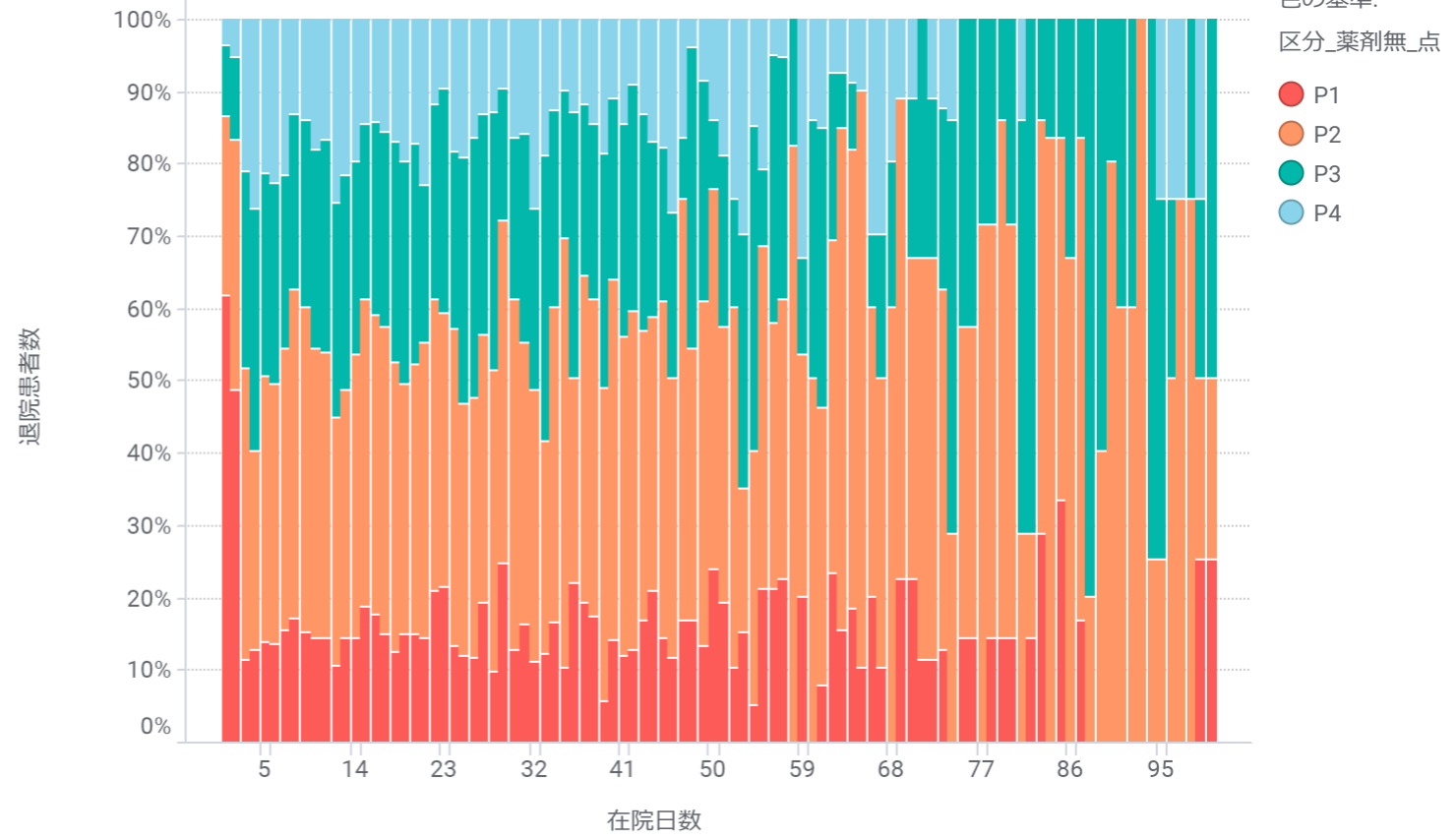
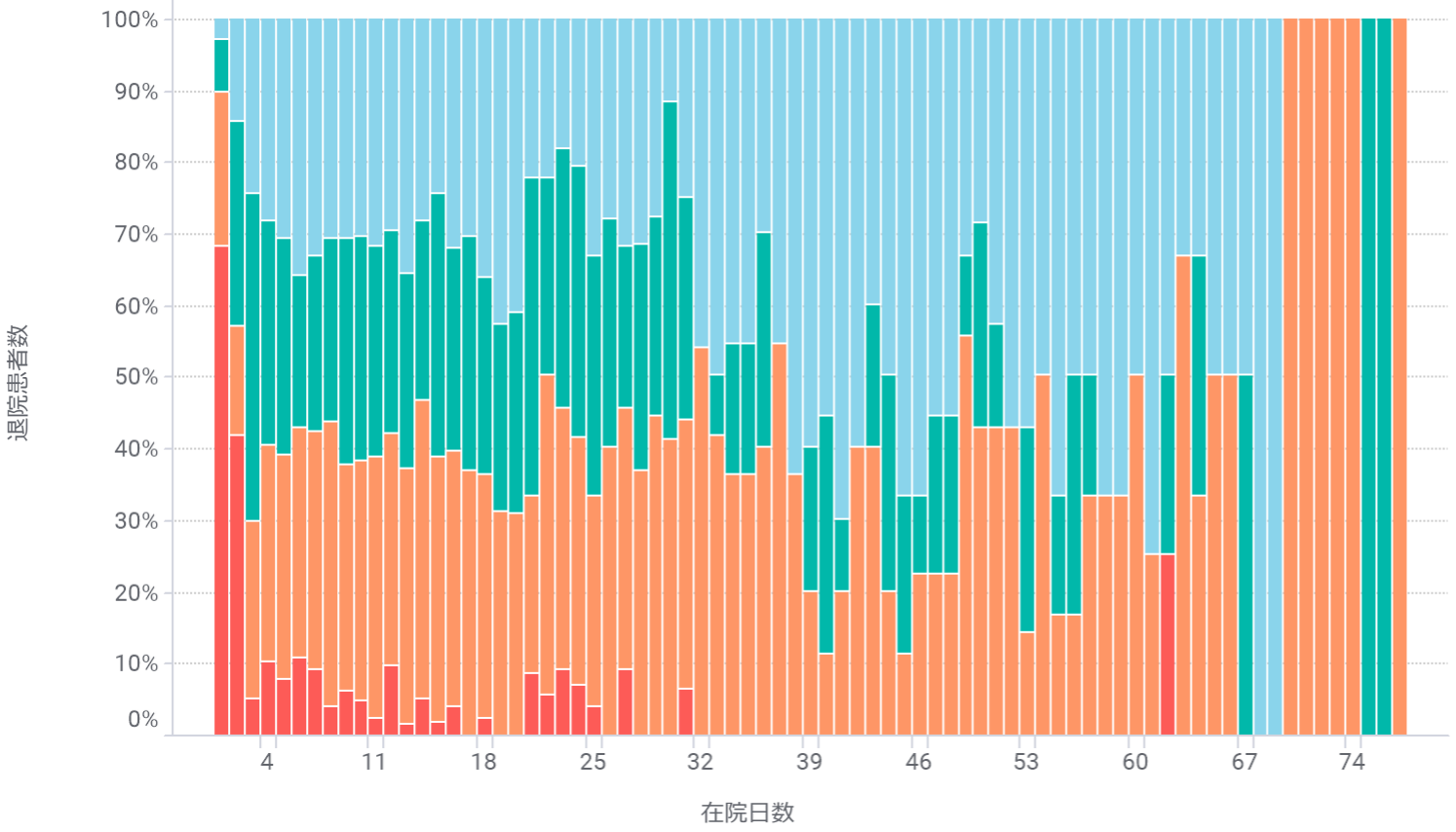


手術あり



色の基準:  
区分\_薬剤無\_点

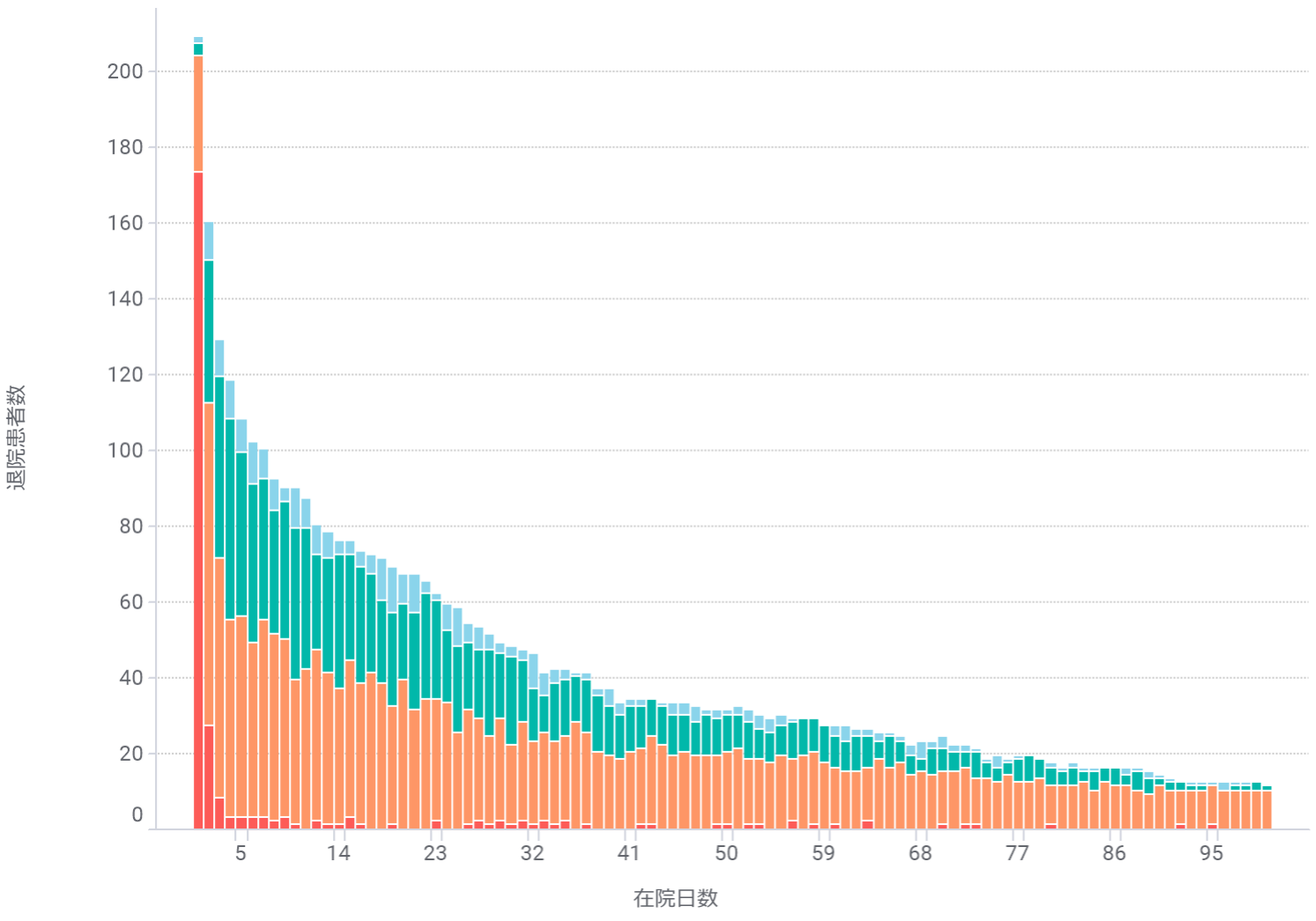
- P1
- P2
- P3
- P4



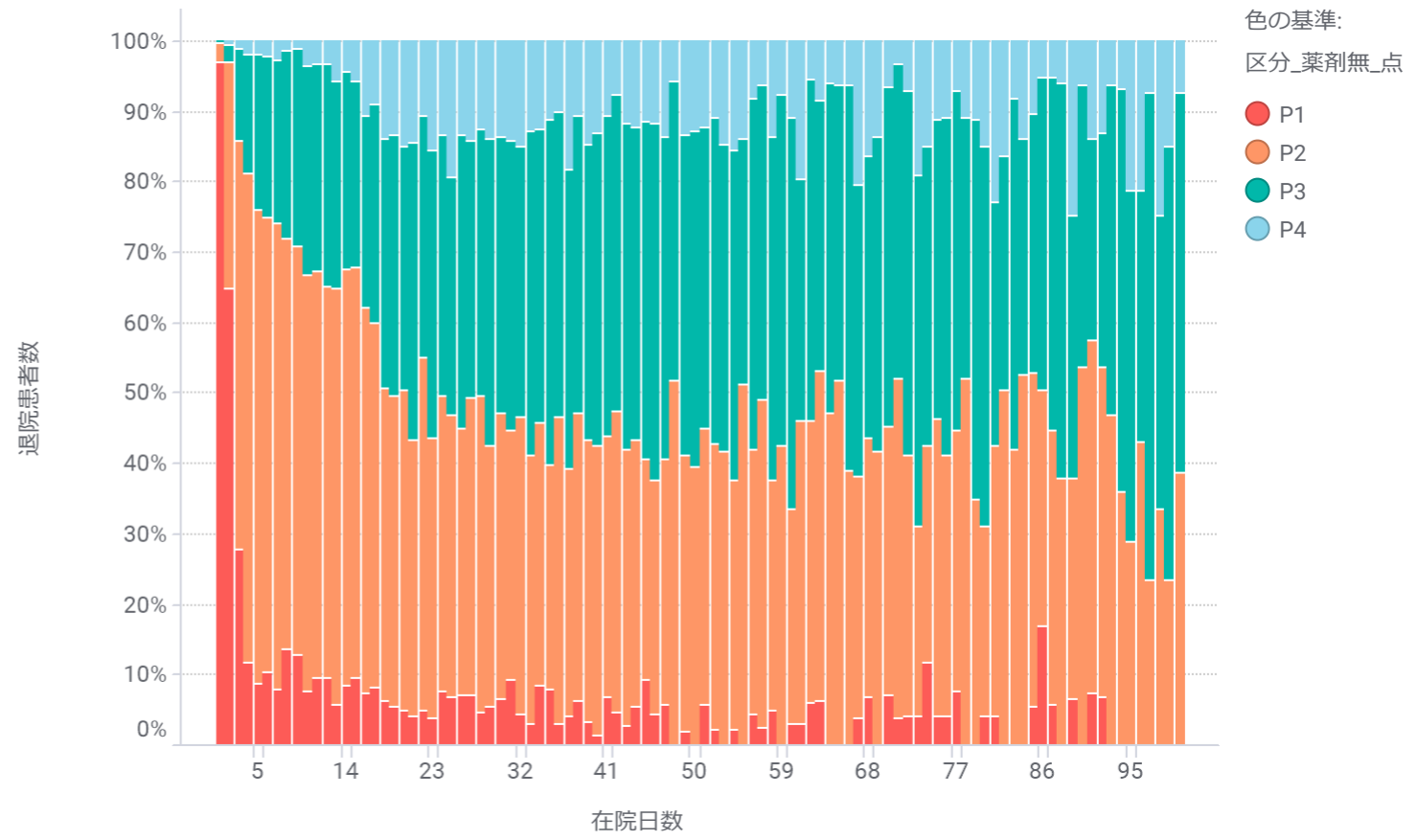
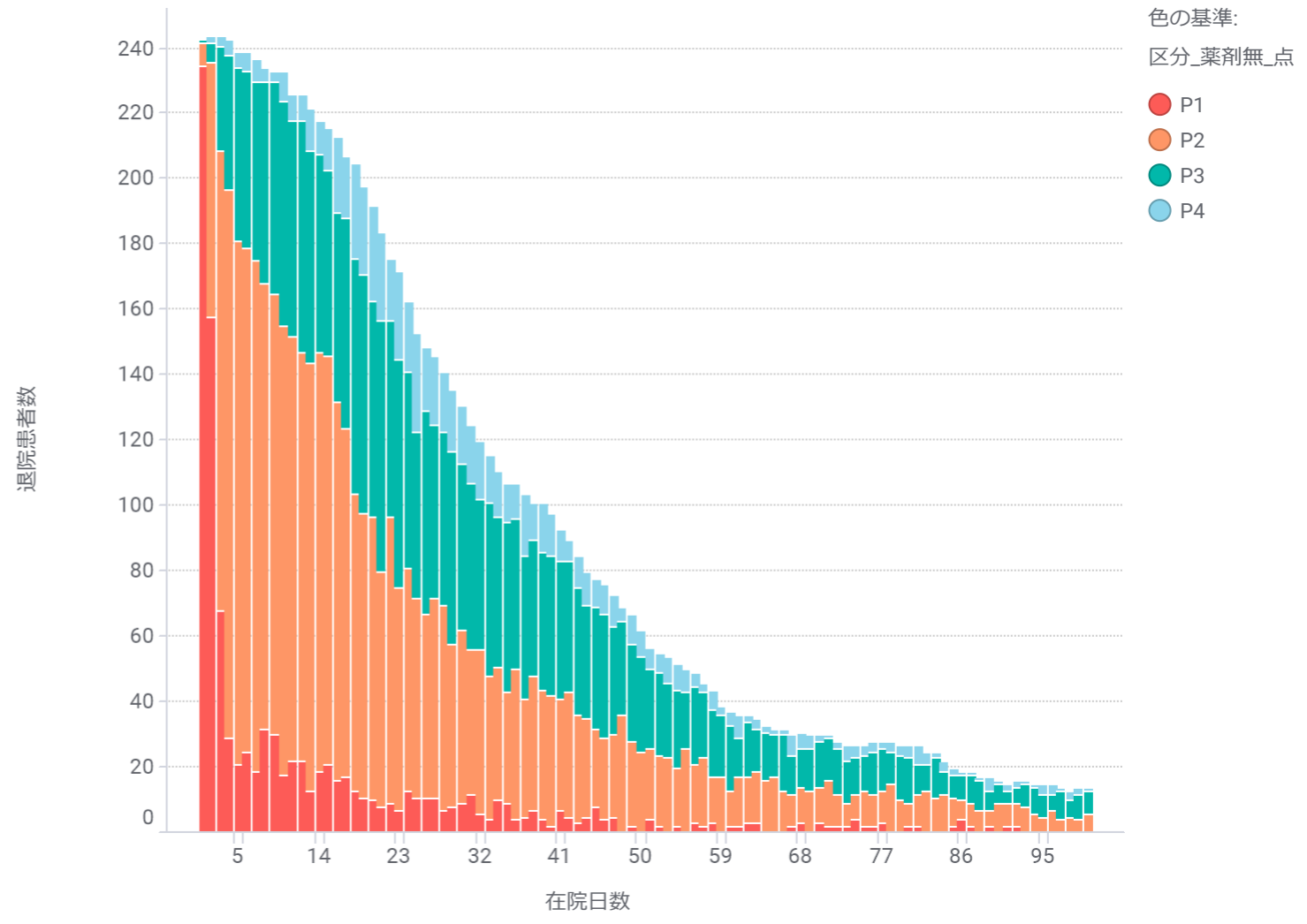
色の基準:  
区分\_薬剤無\_点

- P1
- P2
- P3
- P4

手術なし



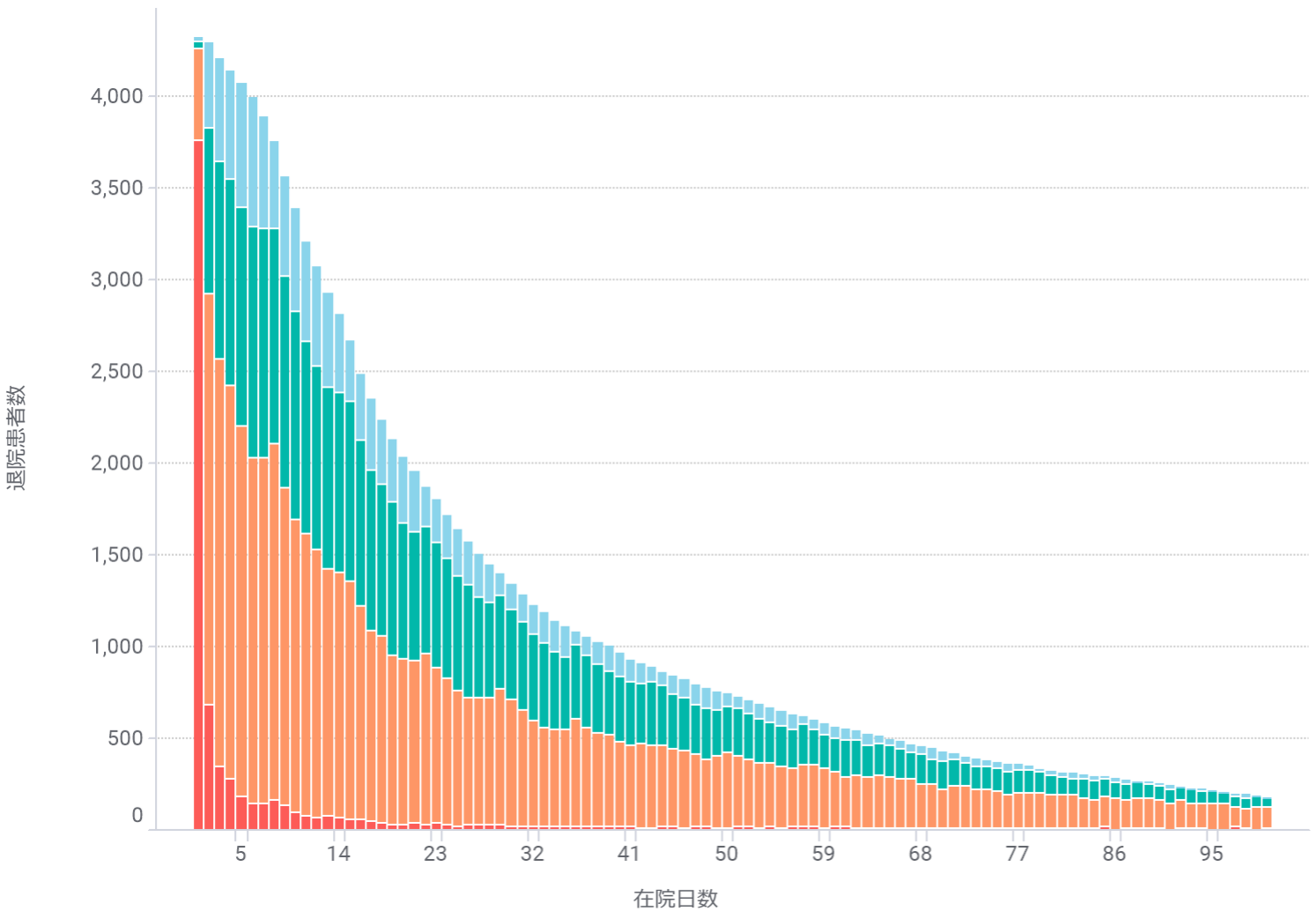
手術あり



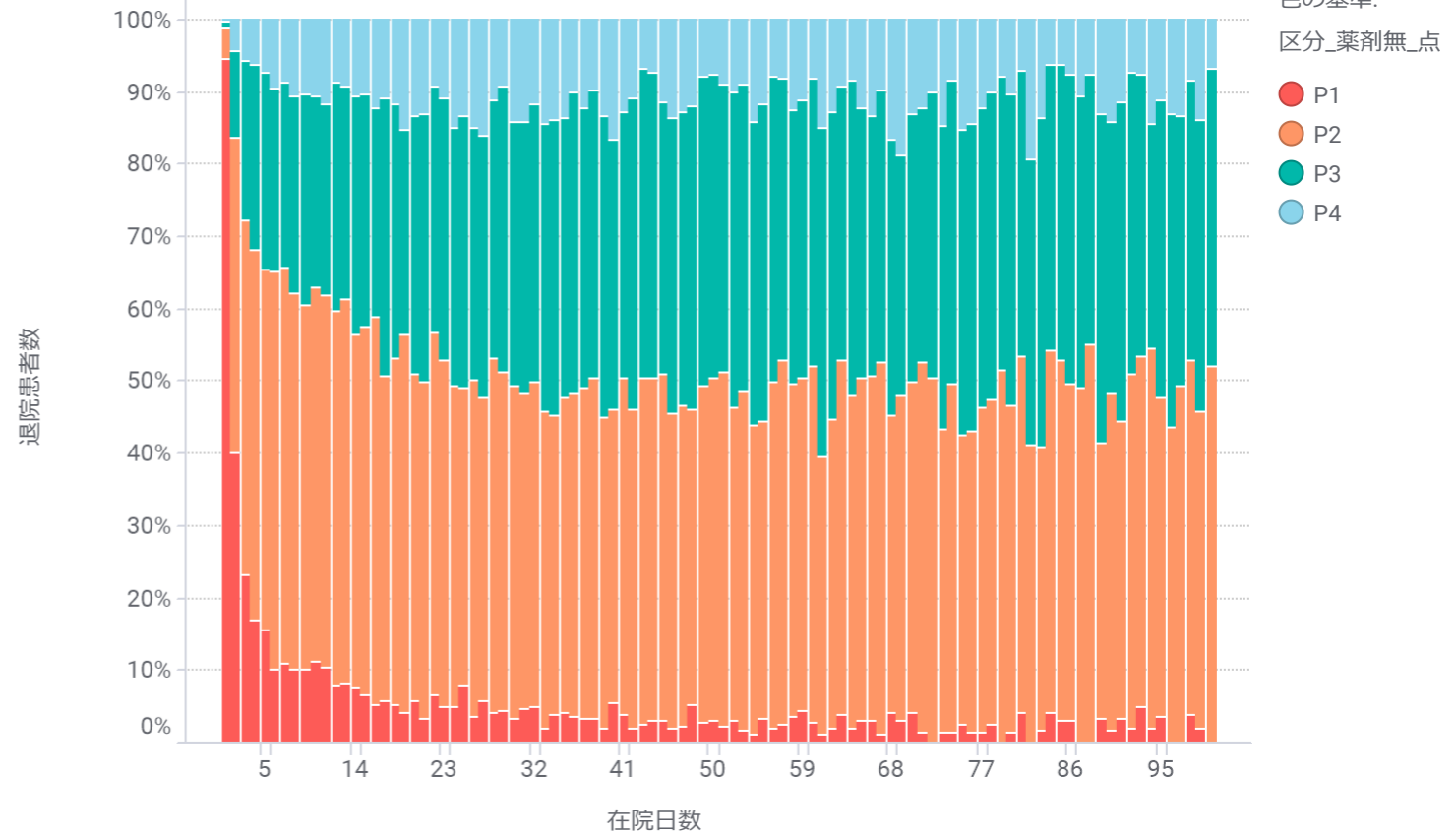
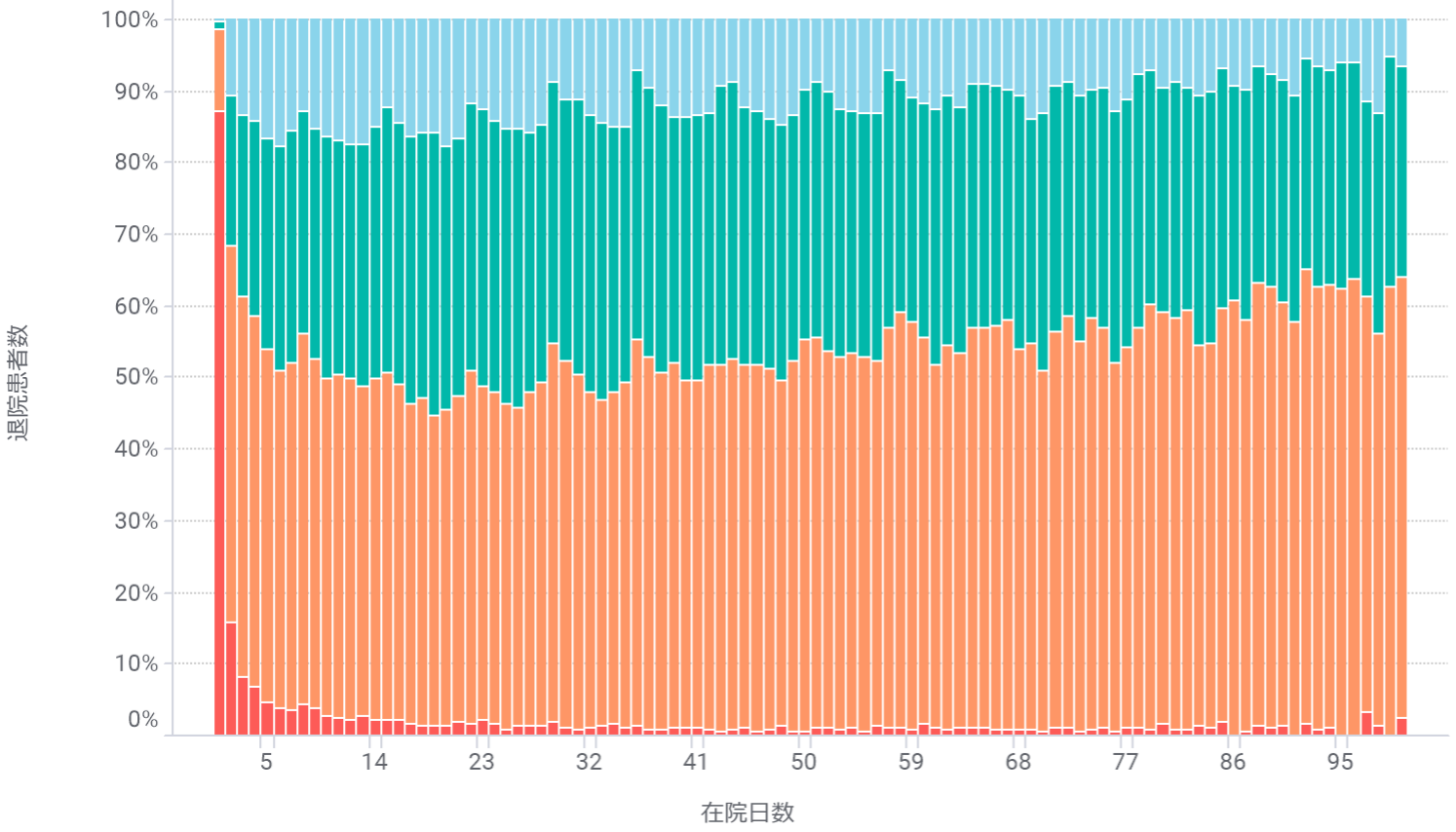
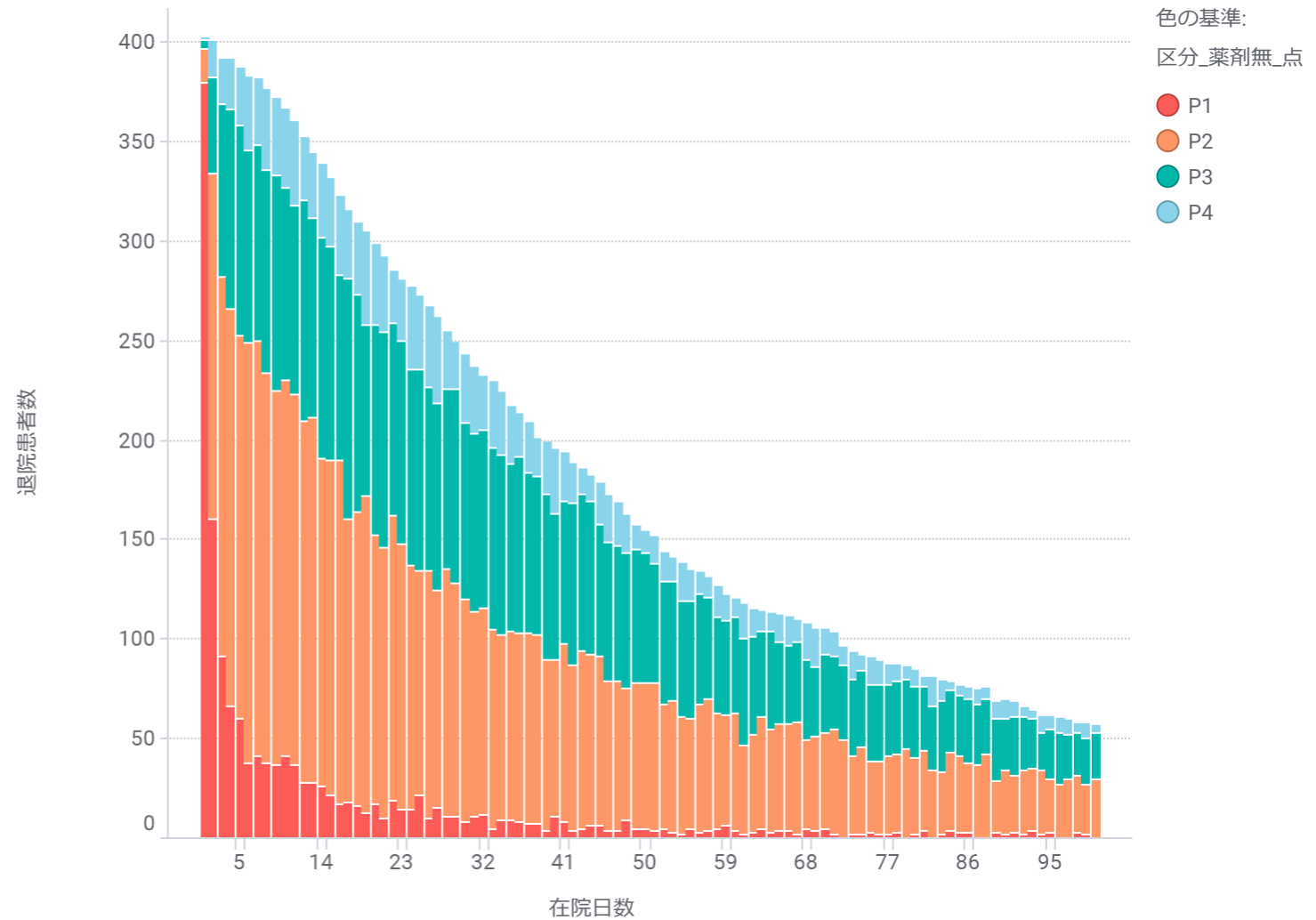
色の基準:  
区分\_薬剤無\_点  
● P1  
● P2  
● P3  
● P4

色の基準:  
区分\_薬剤無\_点  
● P1  
● P2  
● P3  
● P4

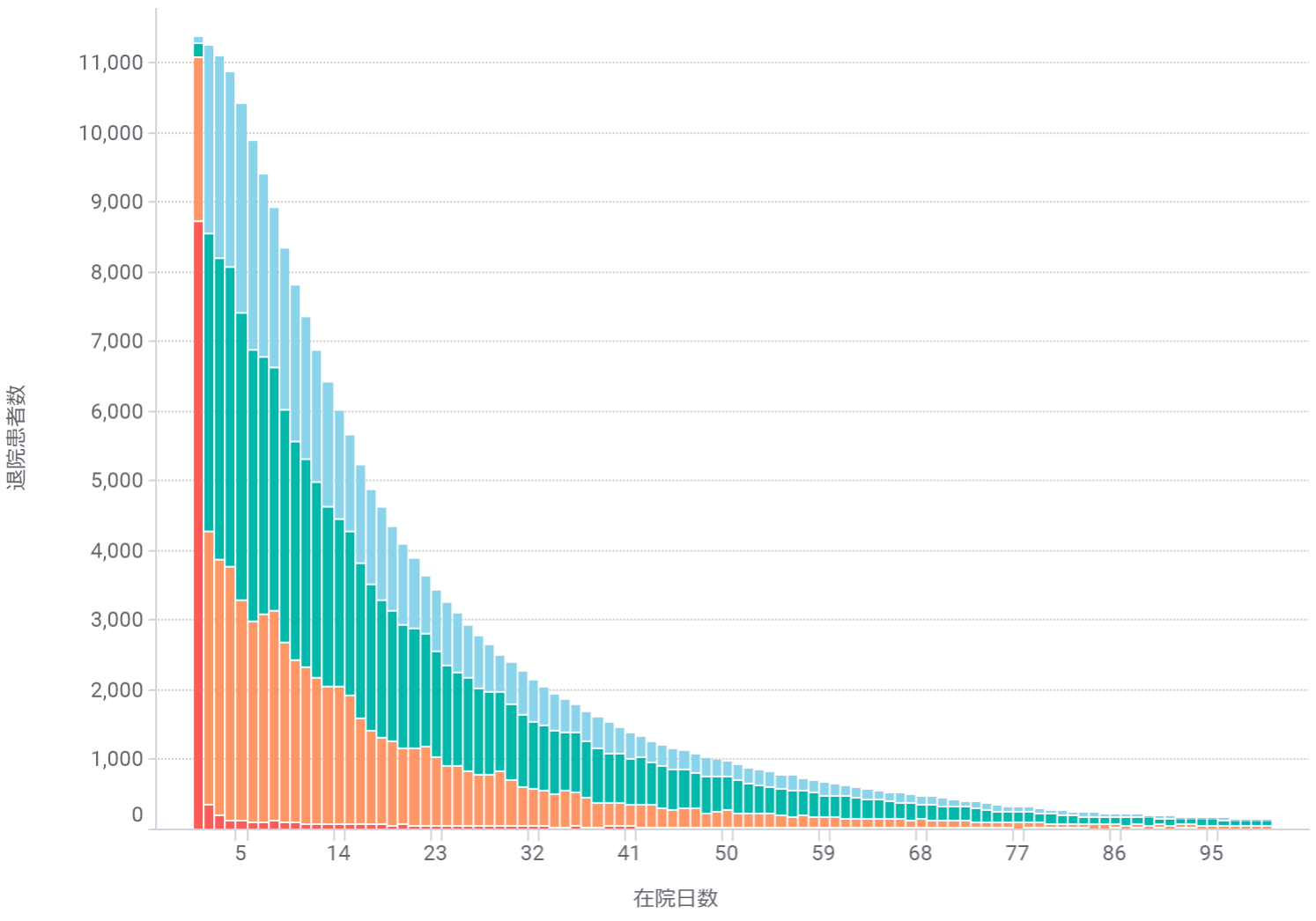
手術なし



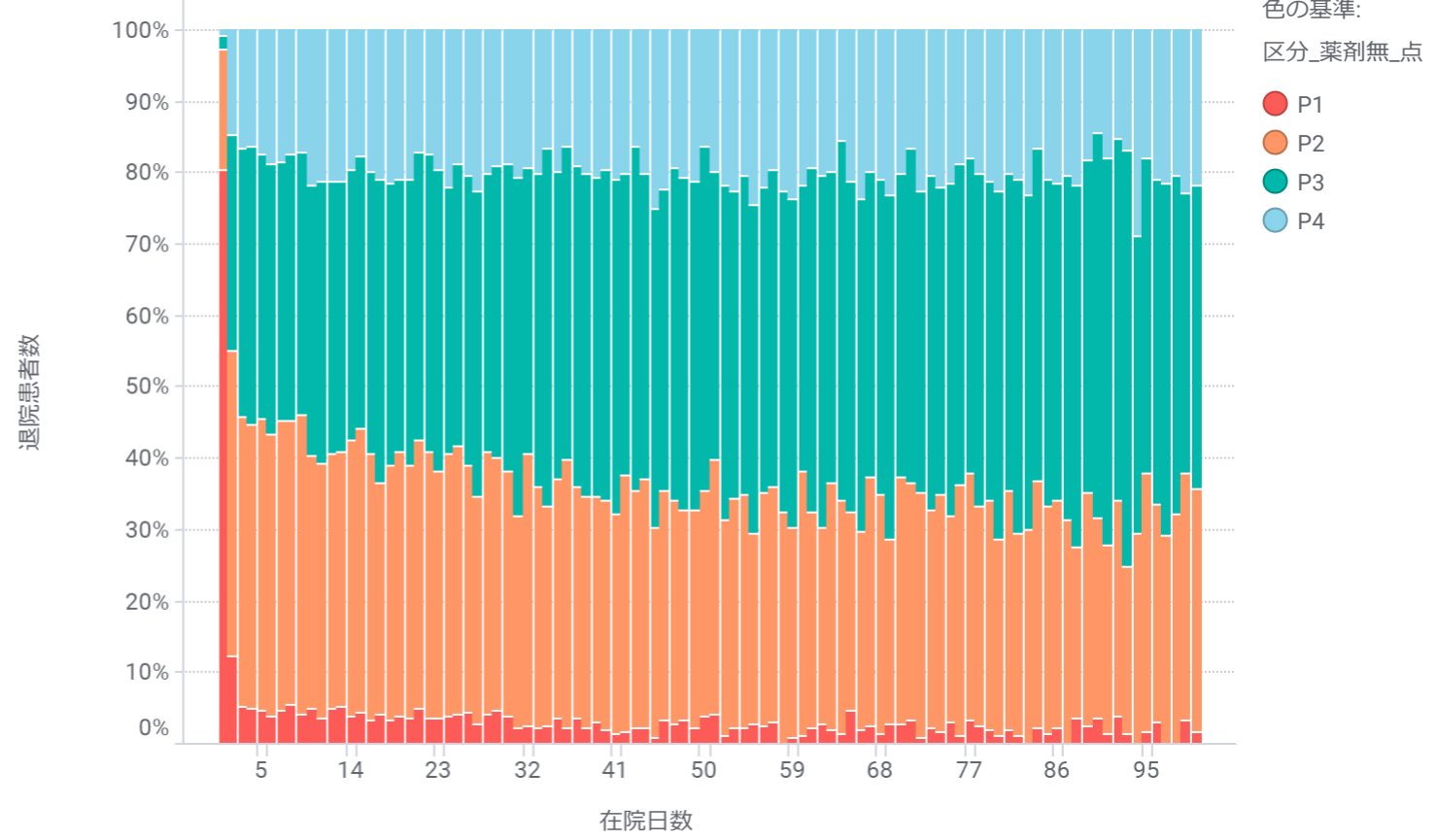
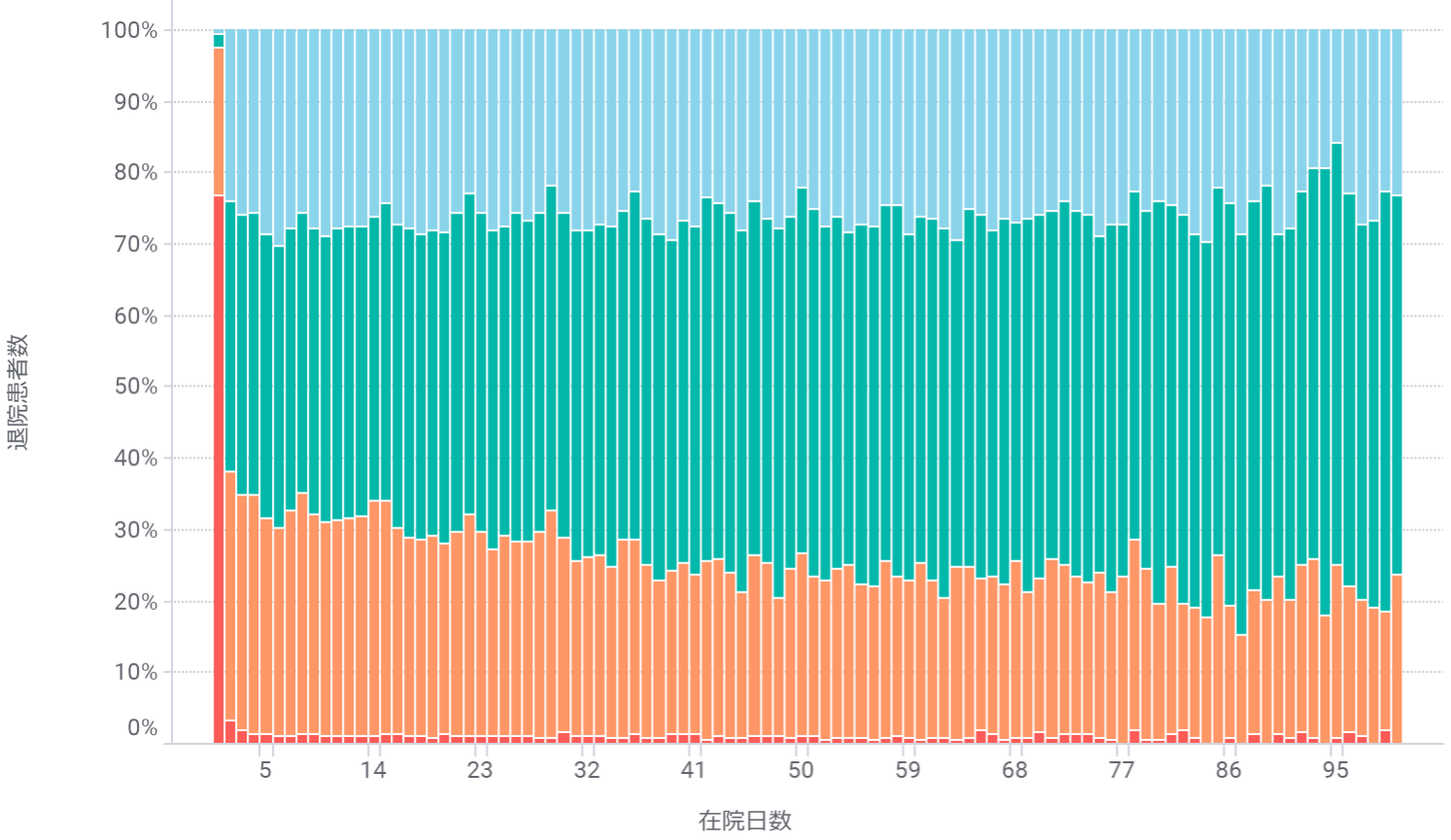
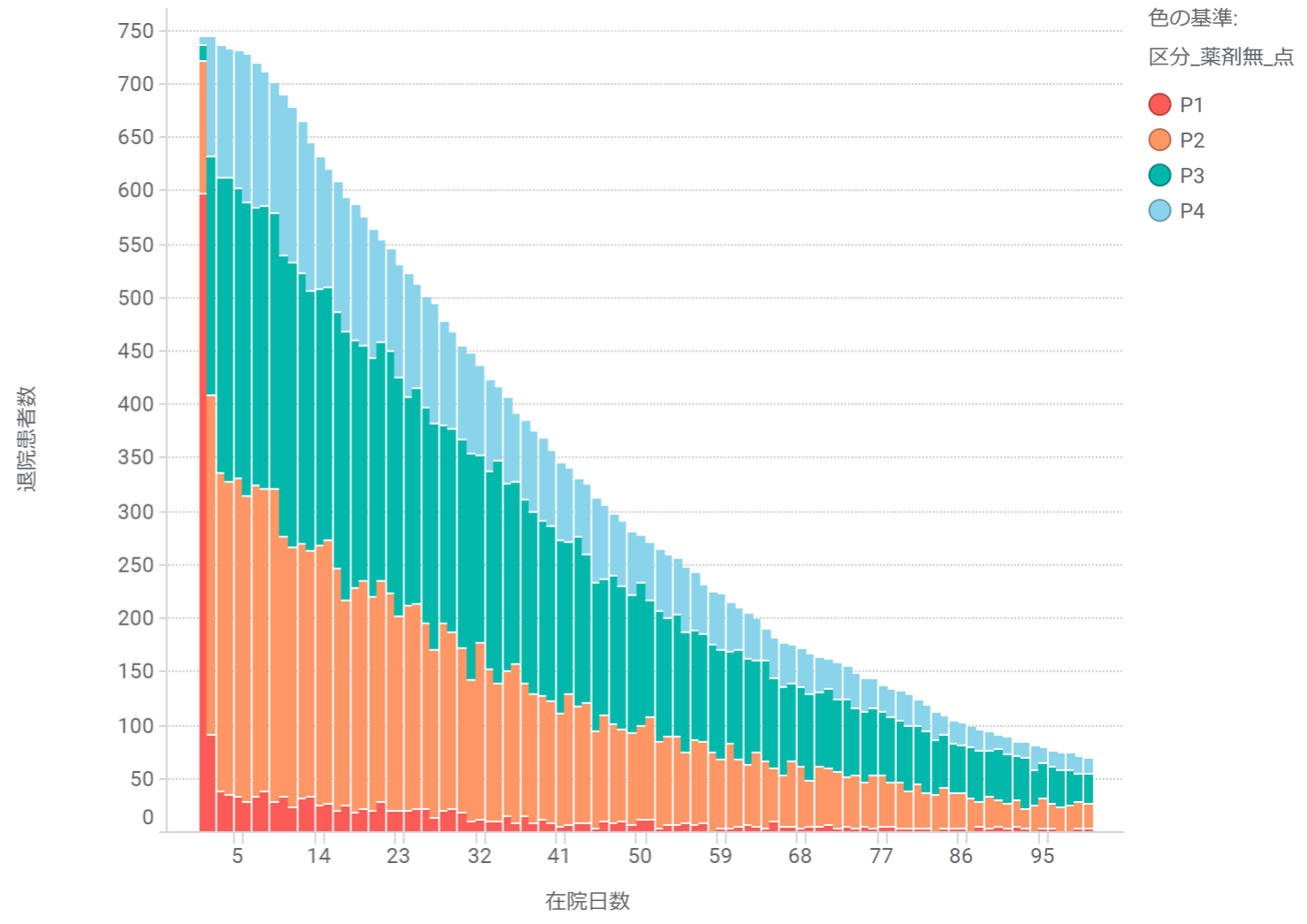
手術あり



手術なし

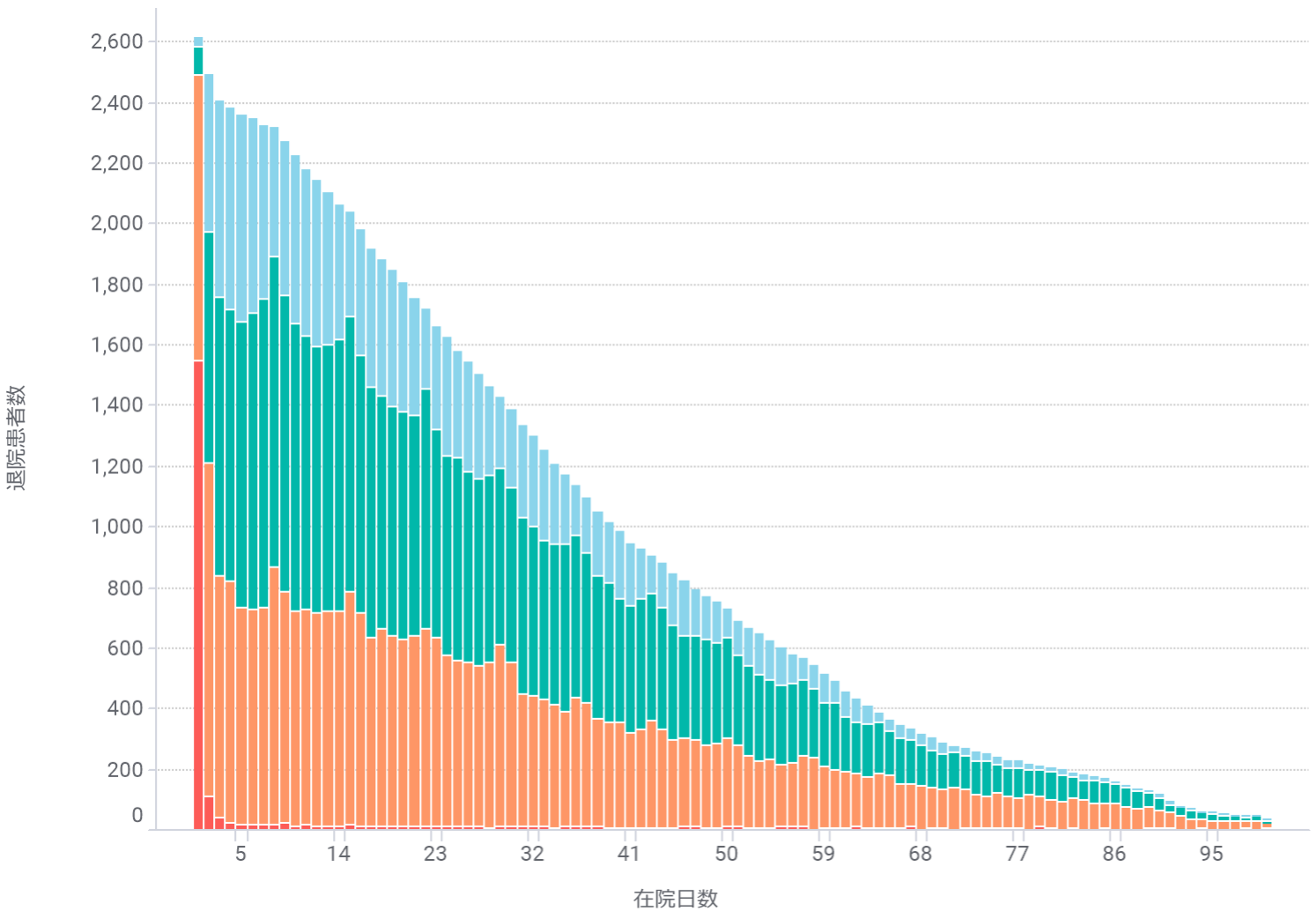


手術あり

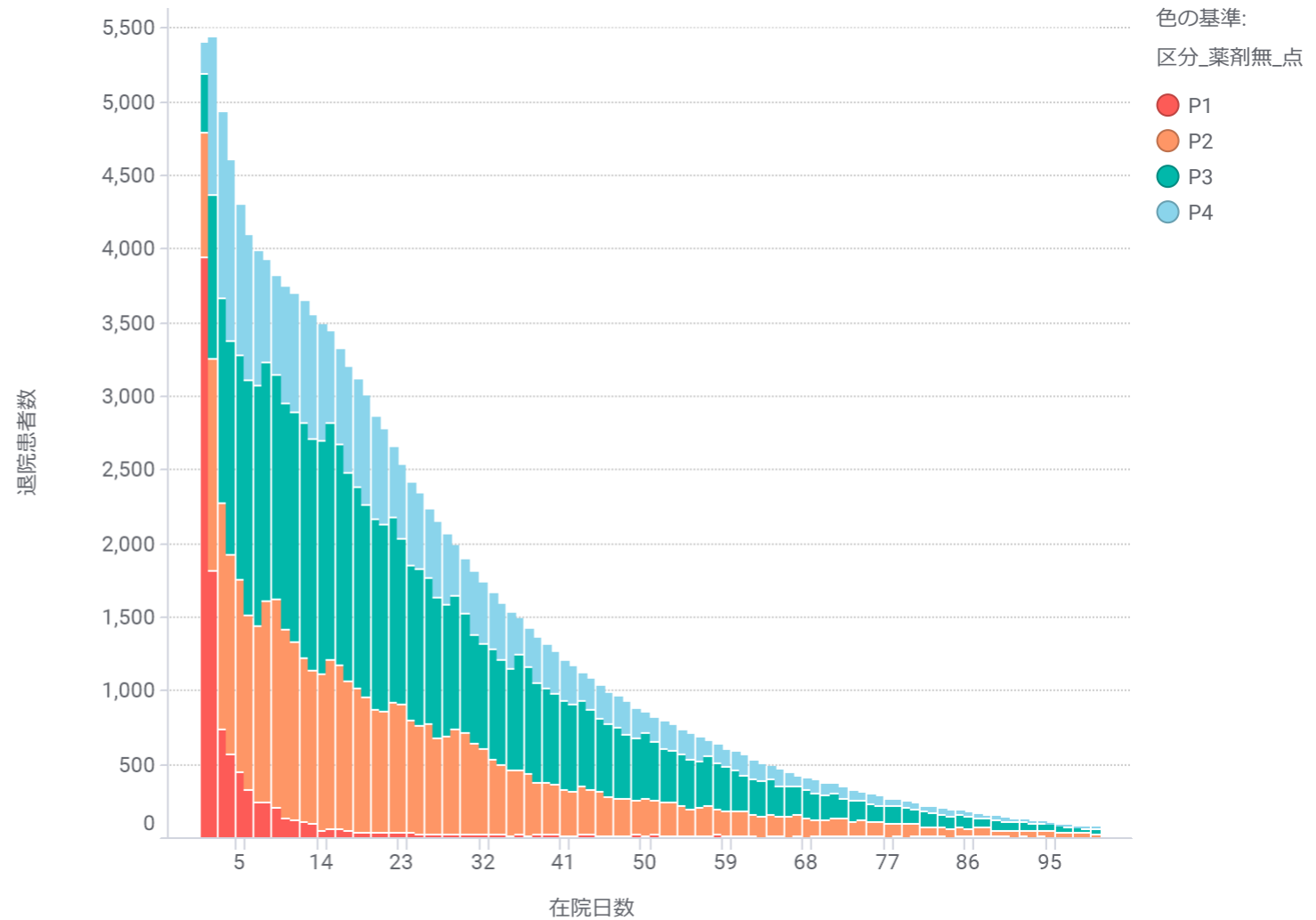


骨折 (160690・160700・160720・160740・160760・160800・160835・160850)

手術なし



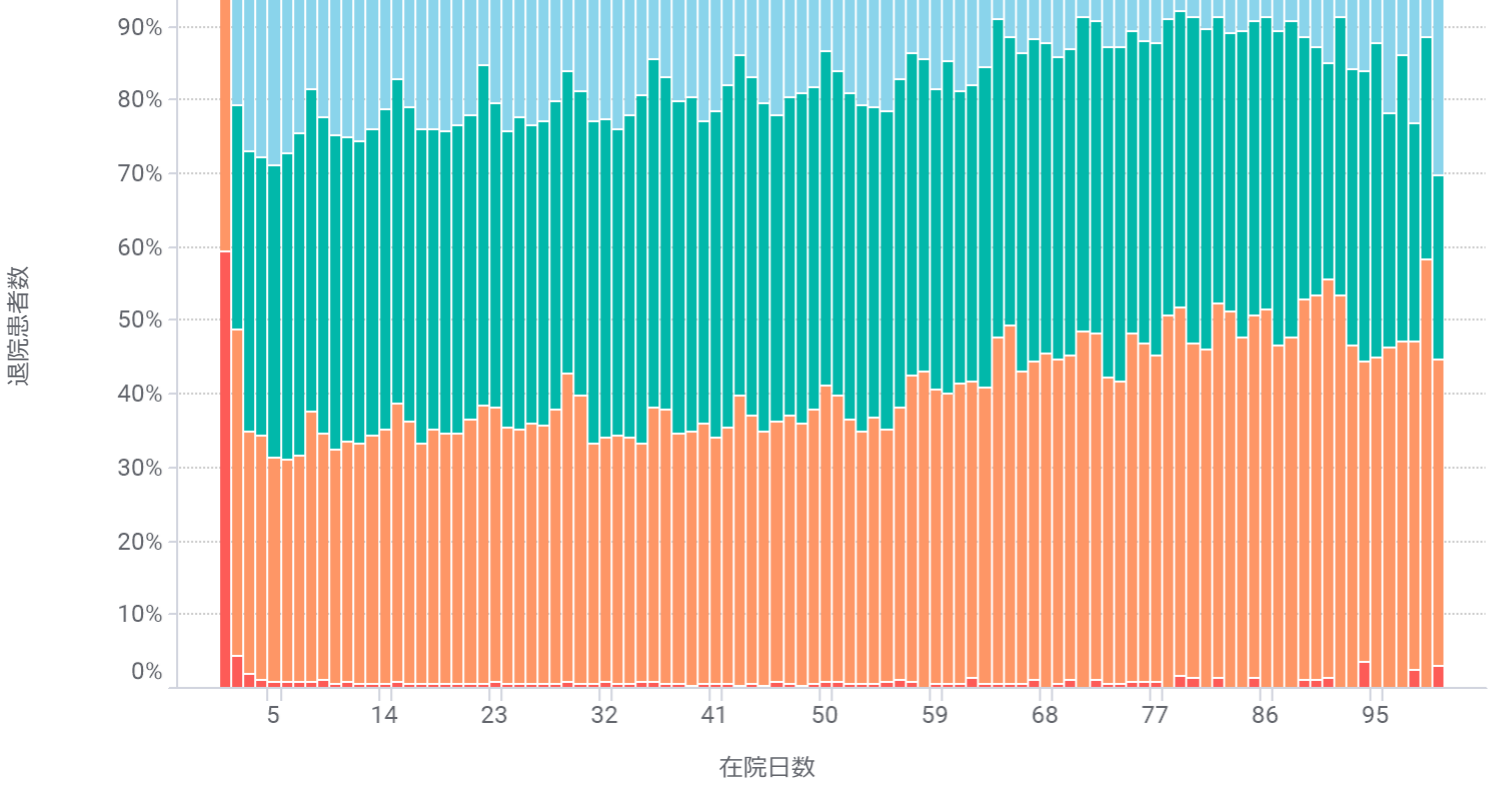
手術あり



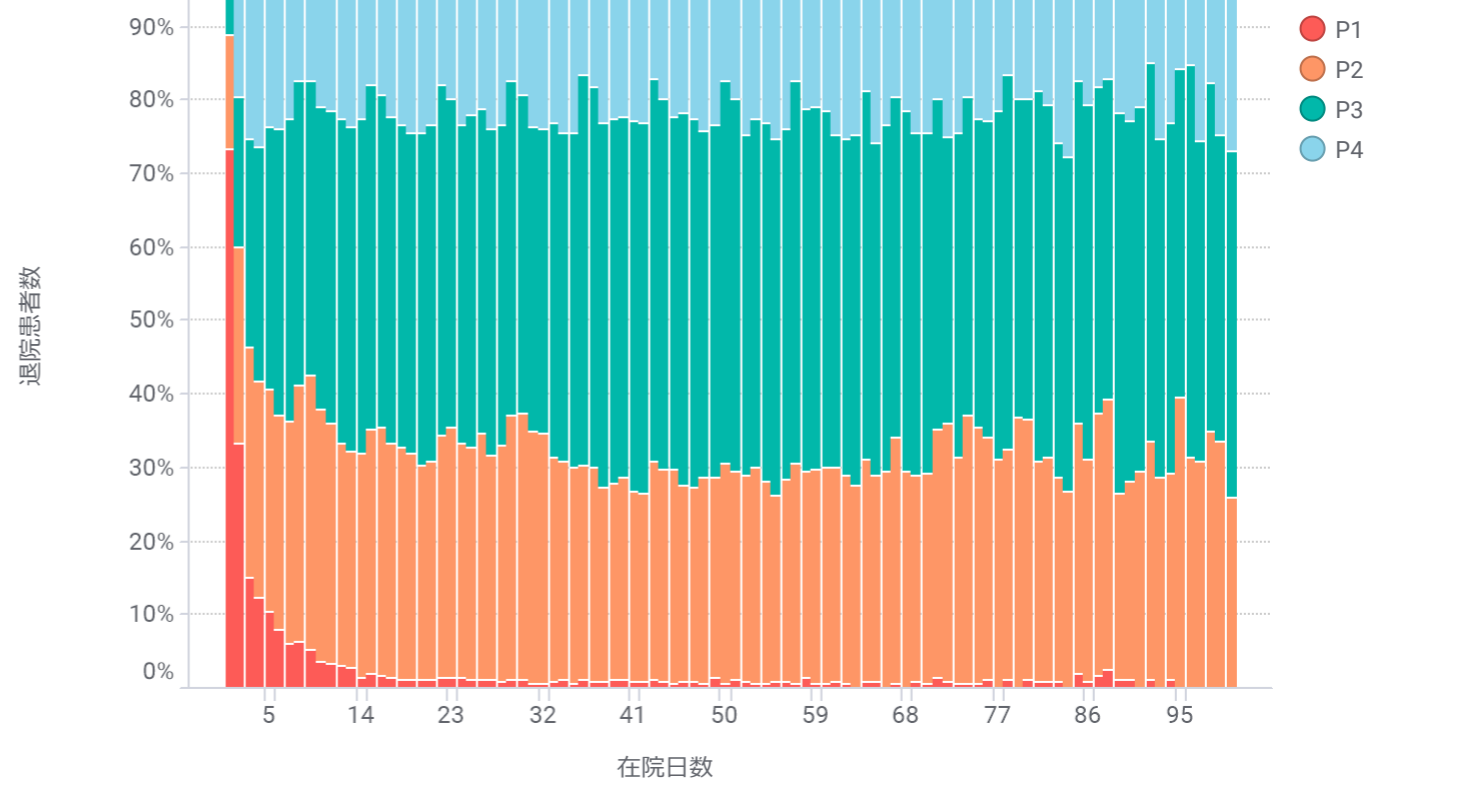
色の基準:  
区分\_薬剤無\_点

- P1
- P2
- P3
- P4

手術なし



手術あり



色の基準:  
区分\_薬剤無\_点

- P1
- P2
- P3
- P4