

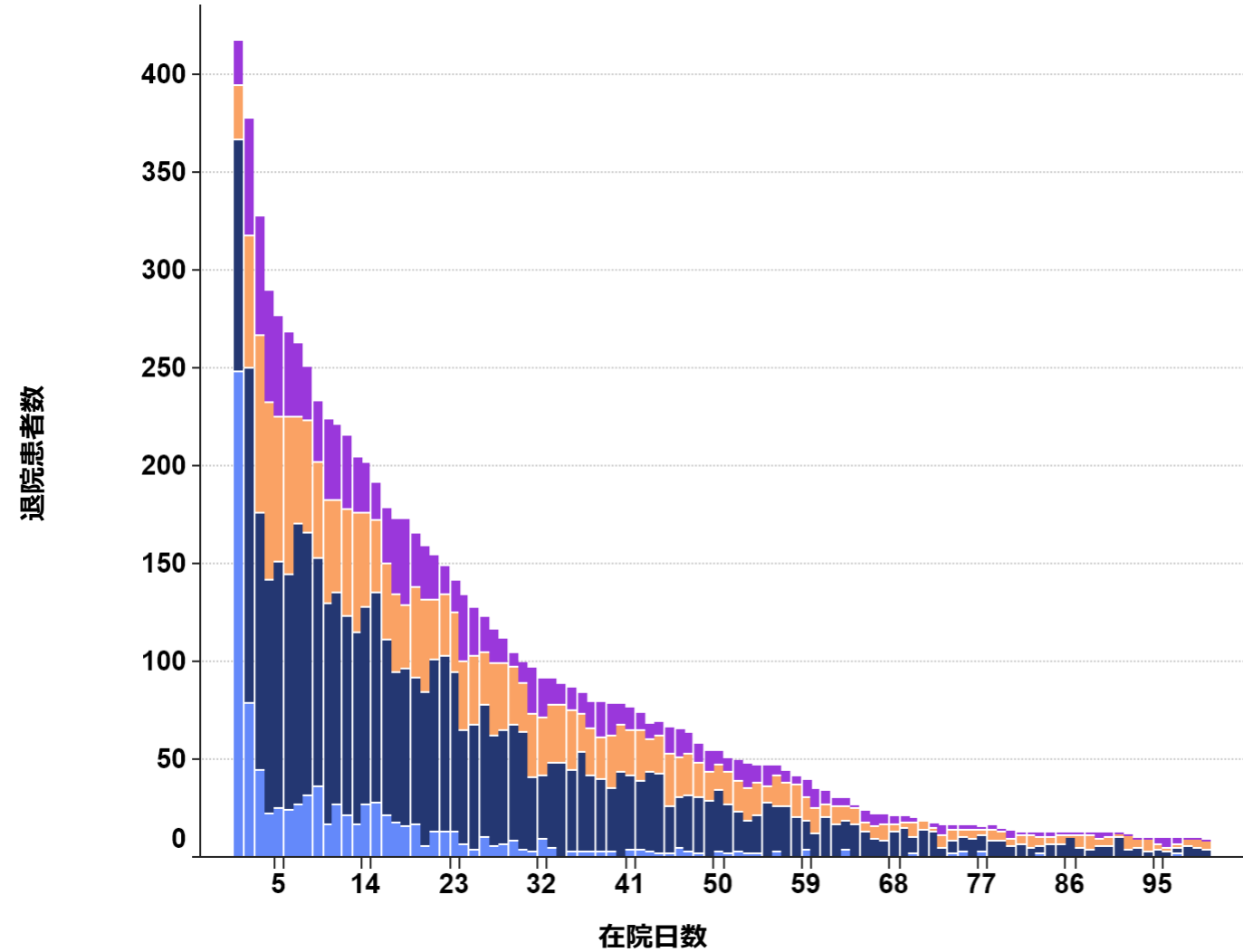
# 疾病別医療資源投入量の分布 2024年度

# 医療資源投入量の分布分析

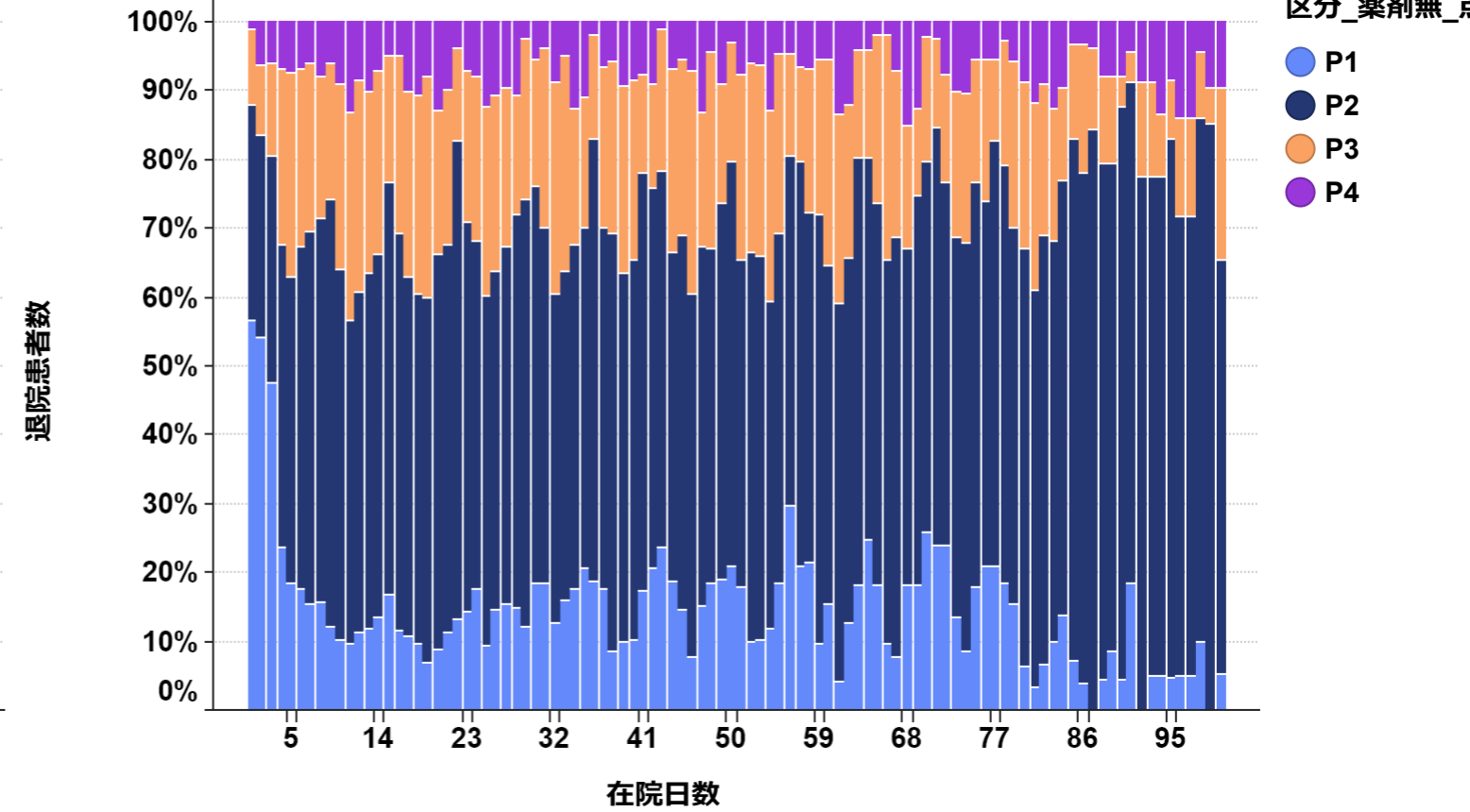
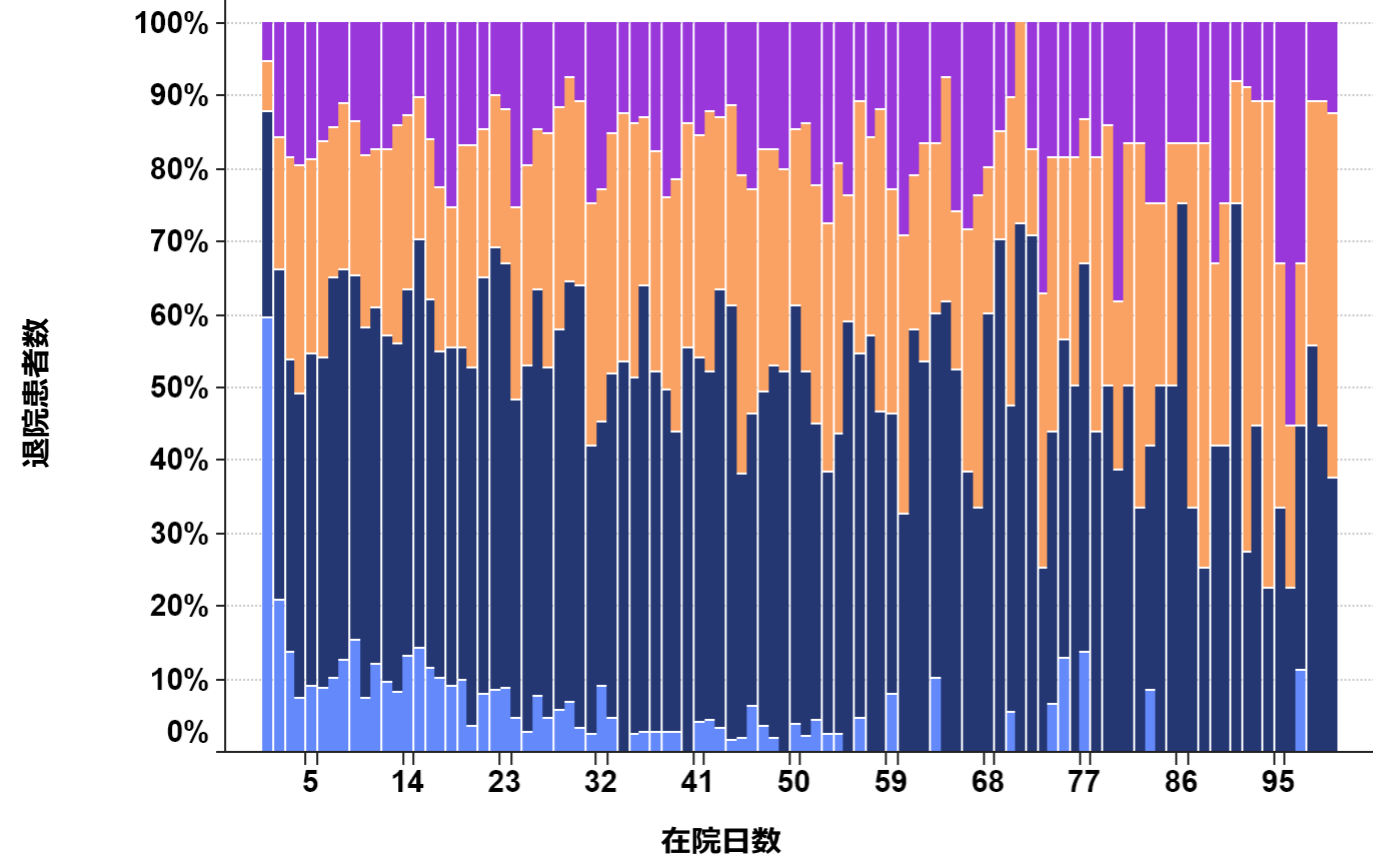
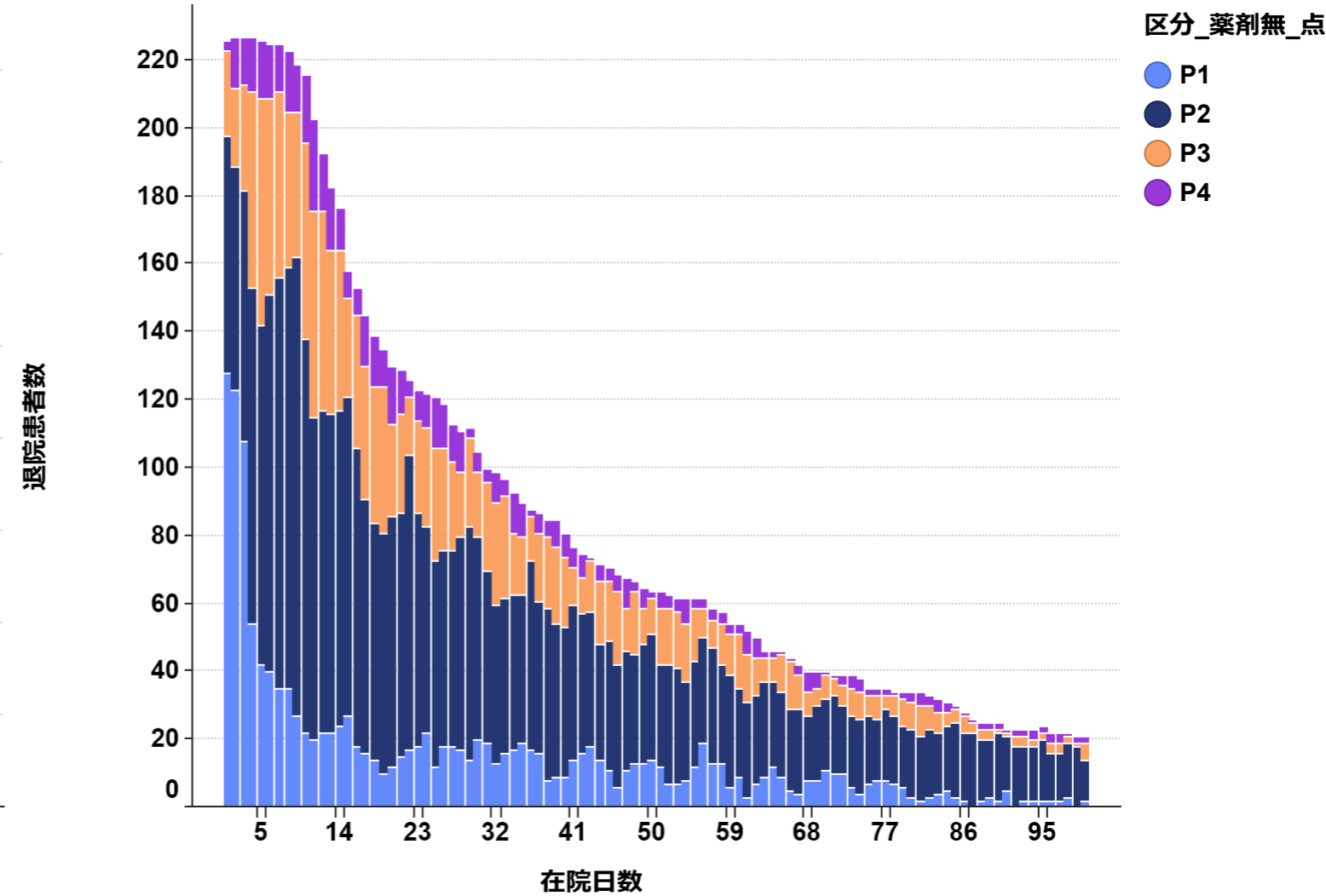
厚生労働省が平成27年3月に示した地域医療構想策定ガイドラインの医療機能区分（高度急性期P1: 3,000点以上、急性期P2: 600点以上、回復期P3: 225点以上、慢性期P4: 225点未満）に基づき、疾病別の医療資源投入量の分布状況についての実態把握

# がん 010010:脳腫瘍

手術なし

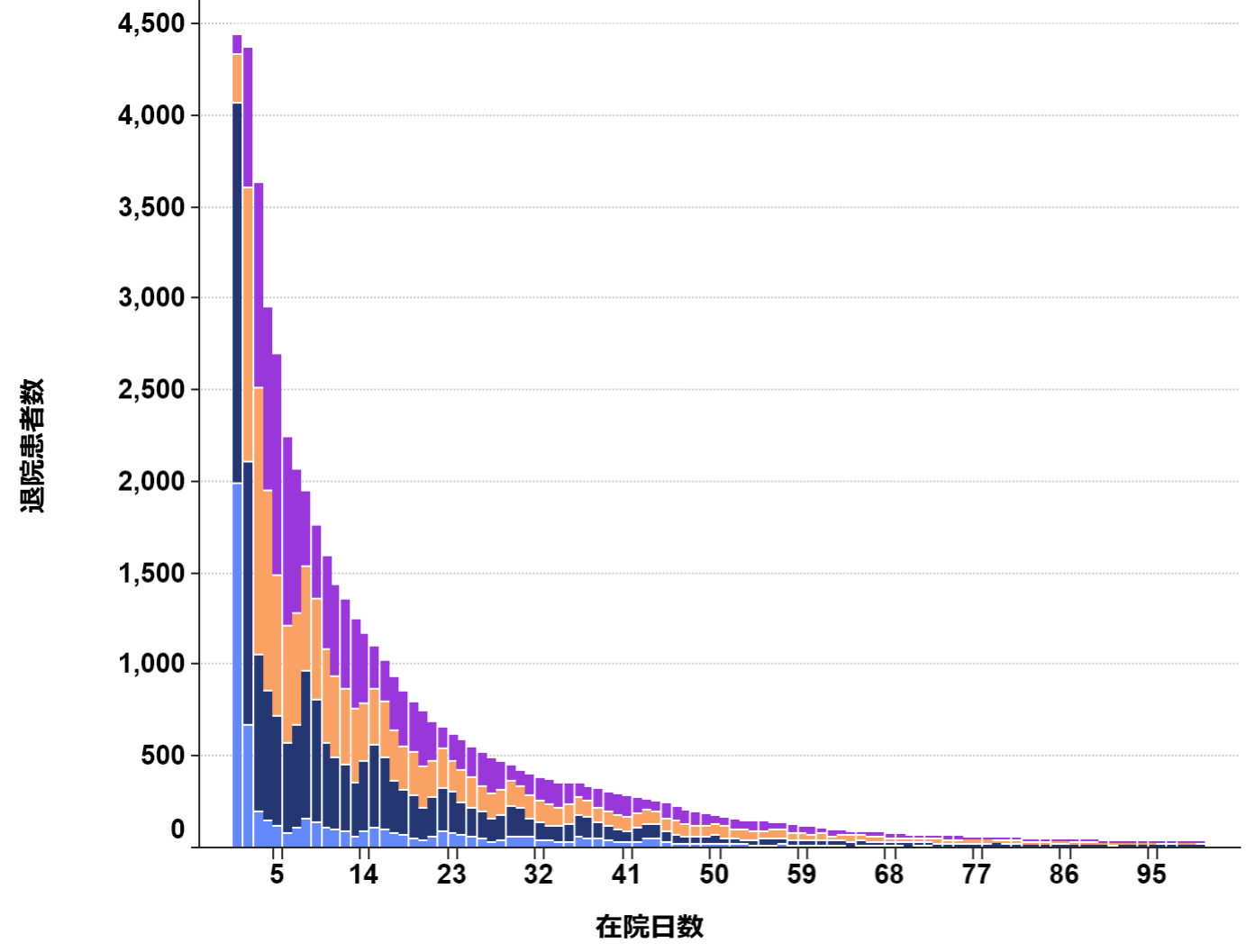


手術あり

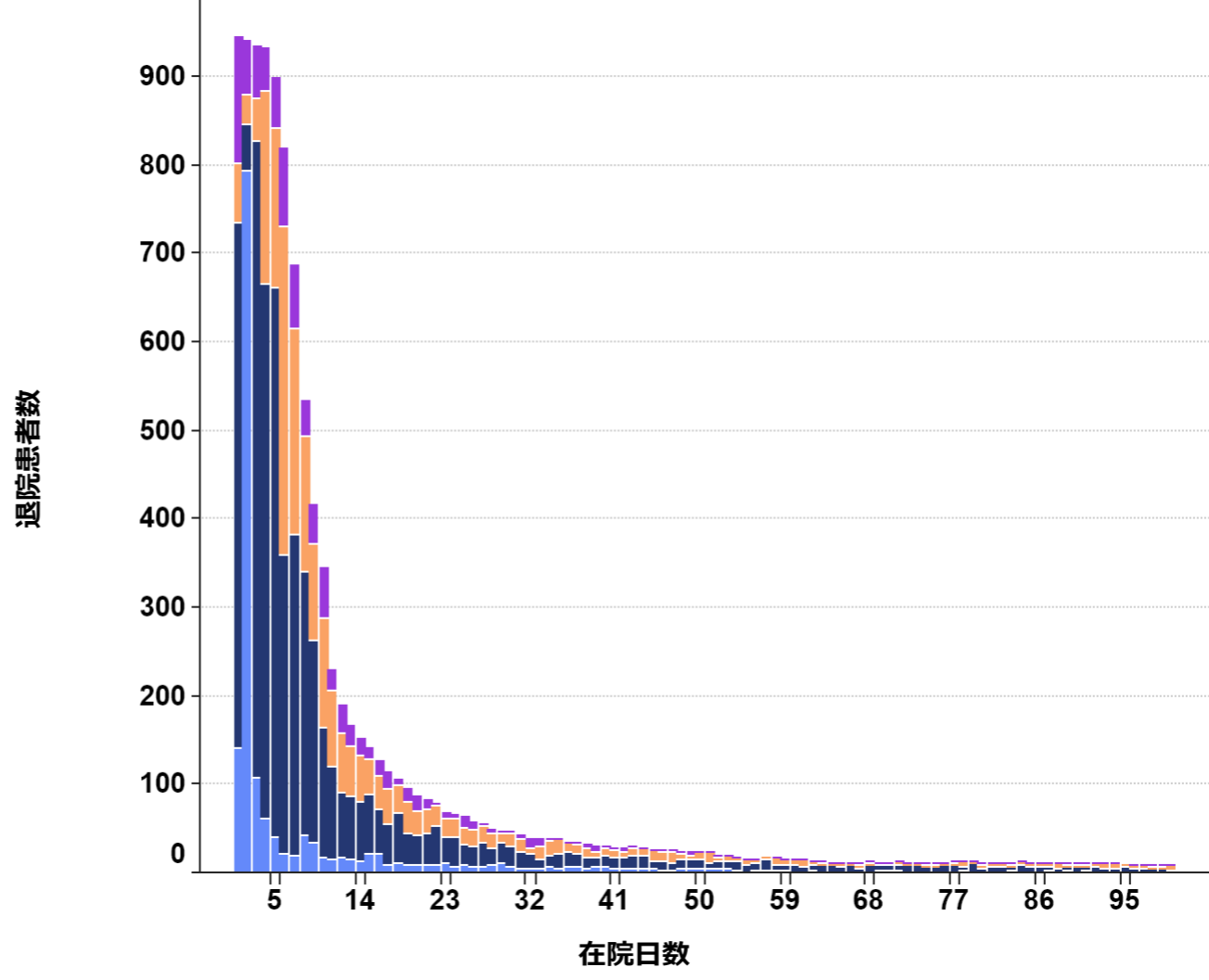


# 肺がん 040040:肺の悪性腫瘍

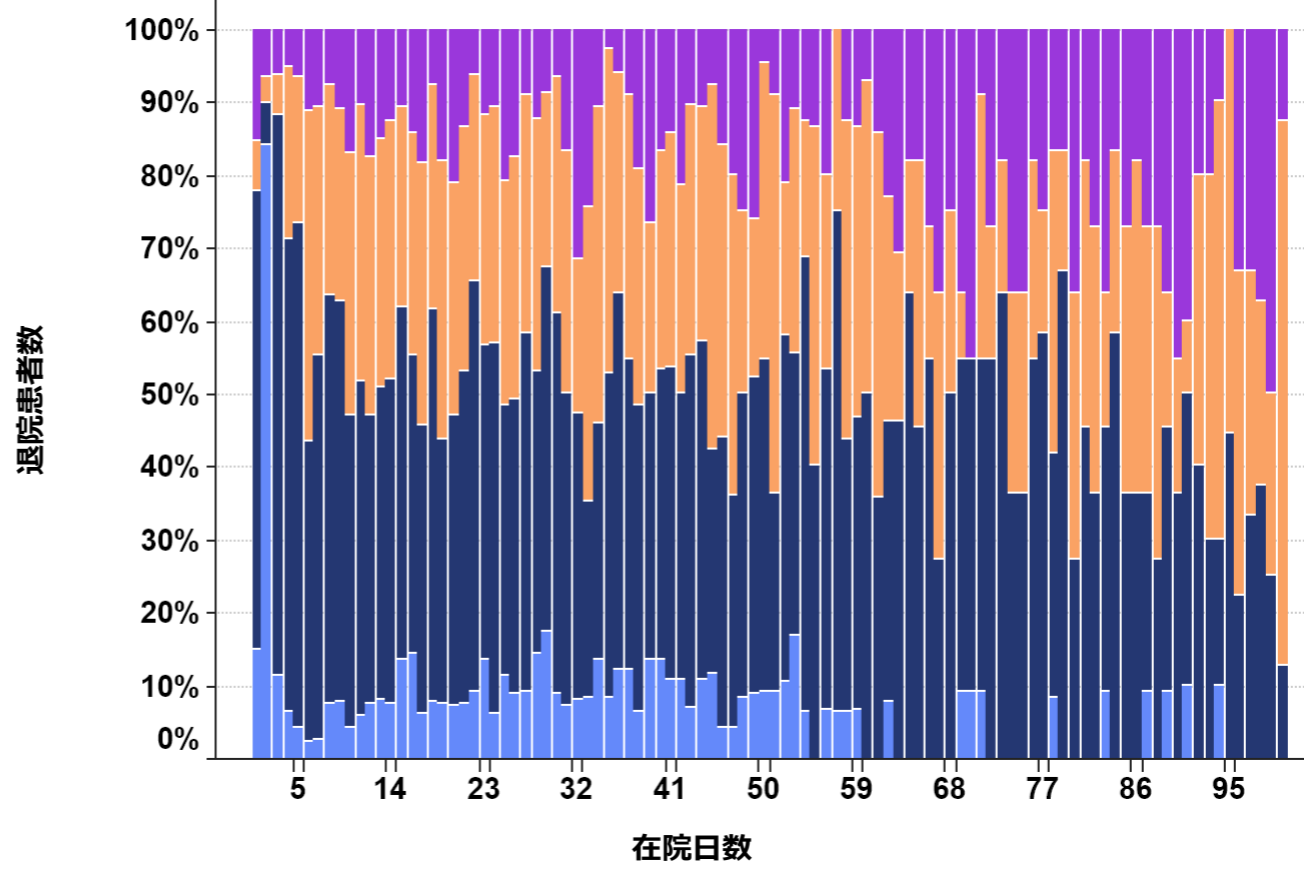
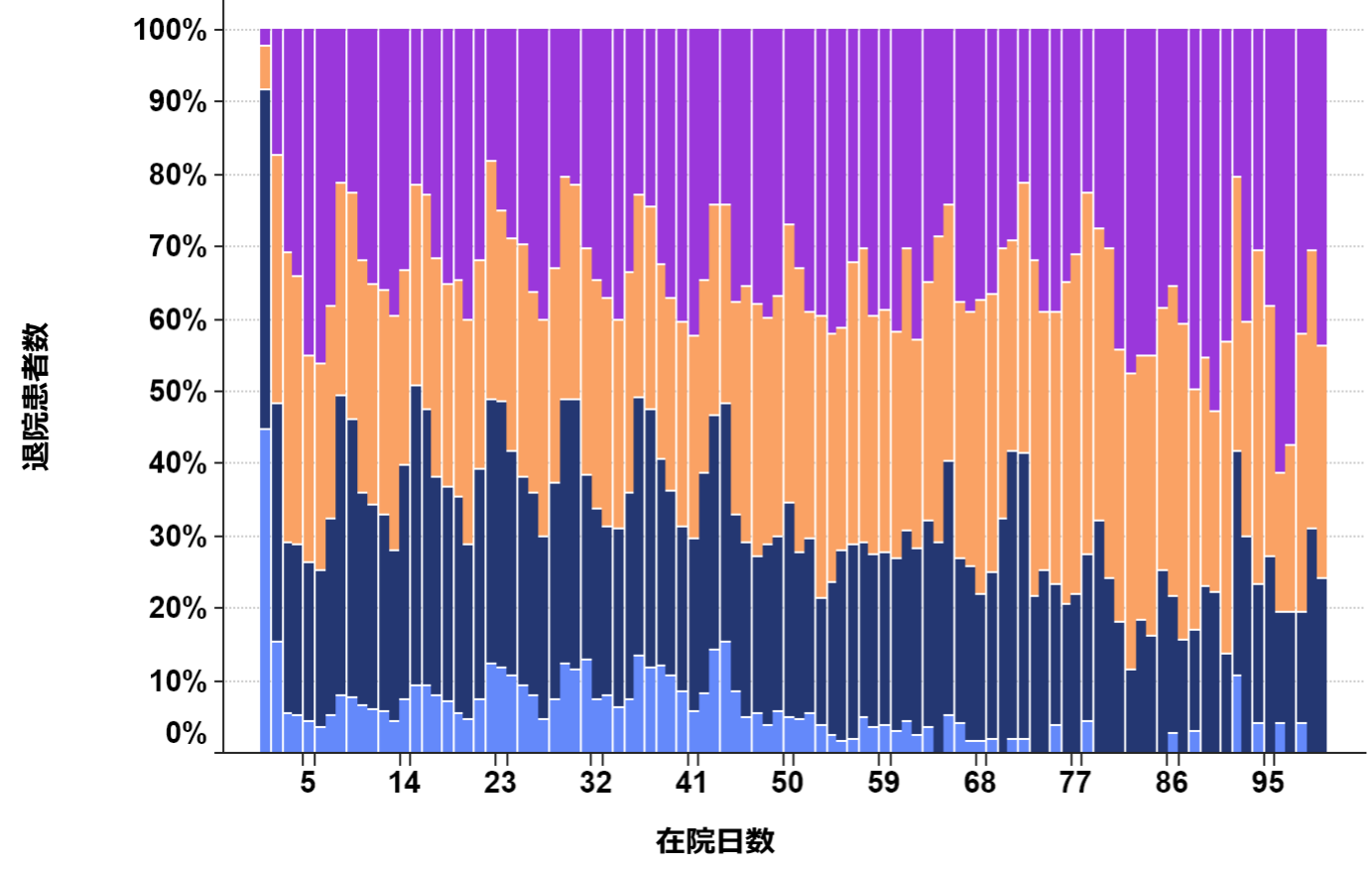
手術なし



手術あり



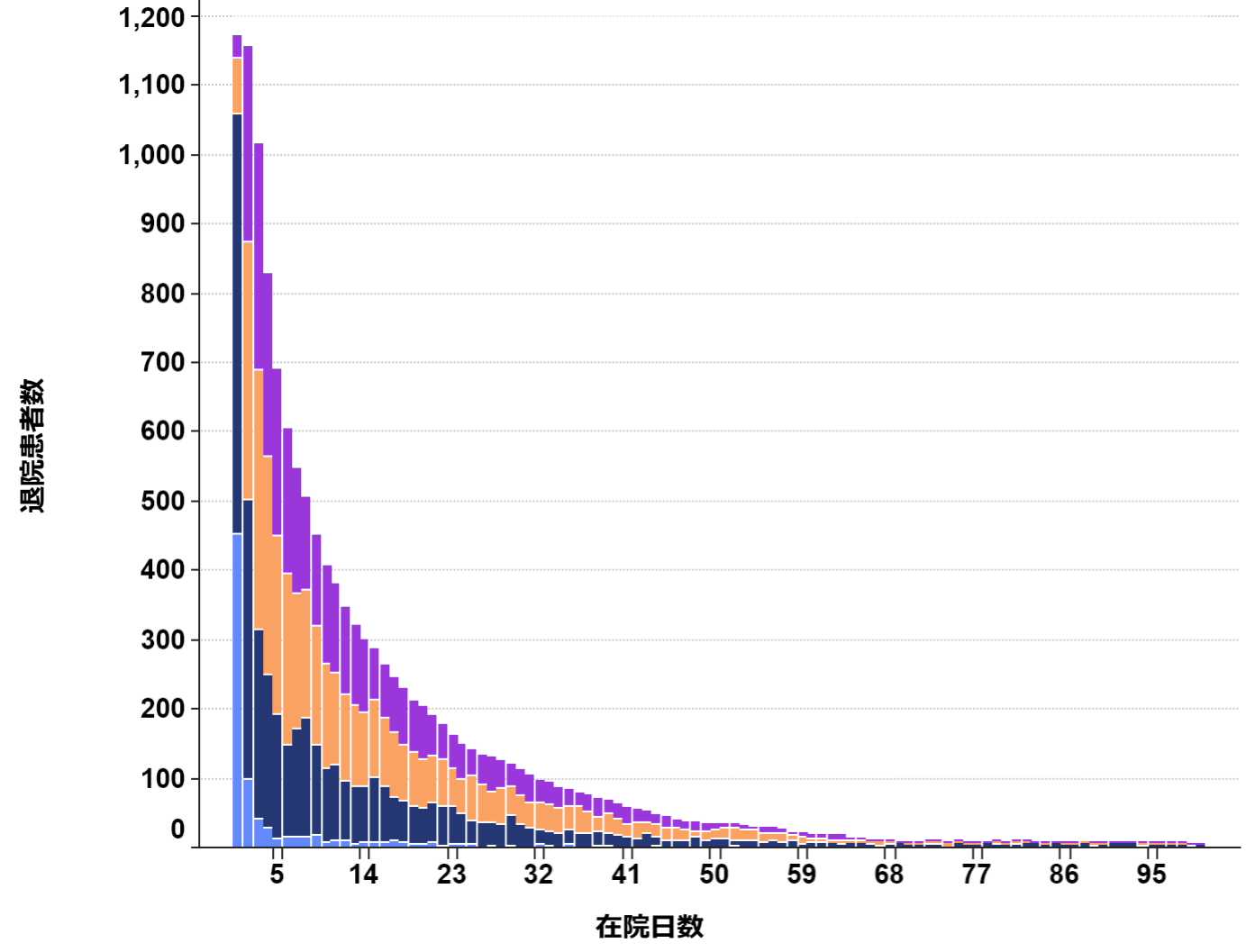
- 区分\_薬剤無\_点
- P1
  - P2
  - P3
  - P4



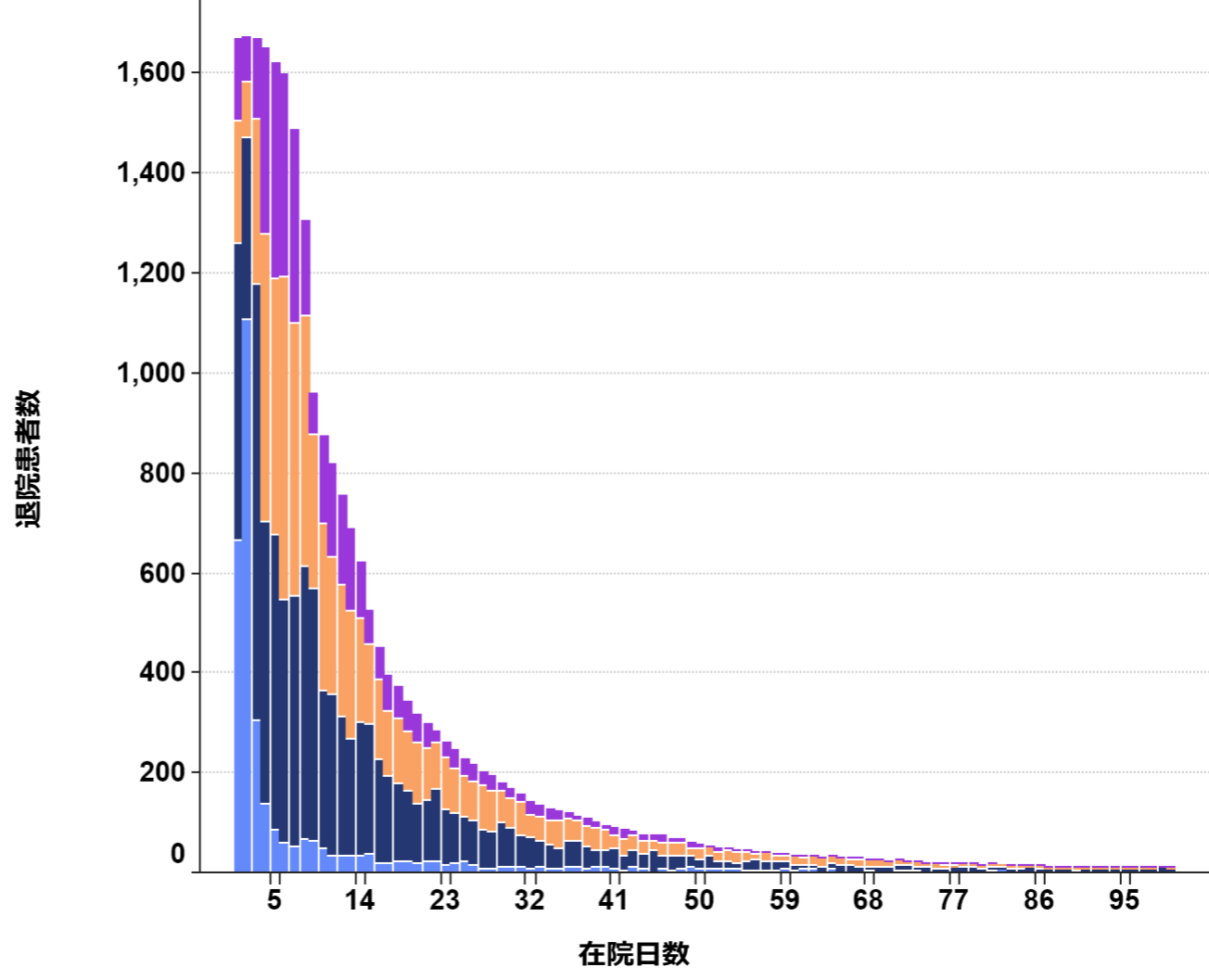
- 区分\_薬剤無\_点
- P1
  - P2
  - P3
  - P4

# 胃がん 060020:胃の悪性腫瘍

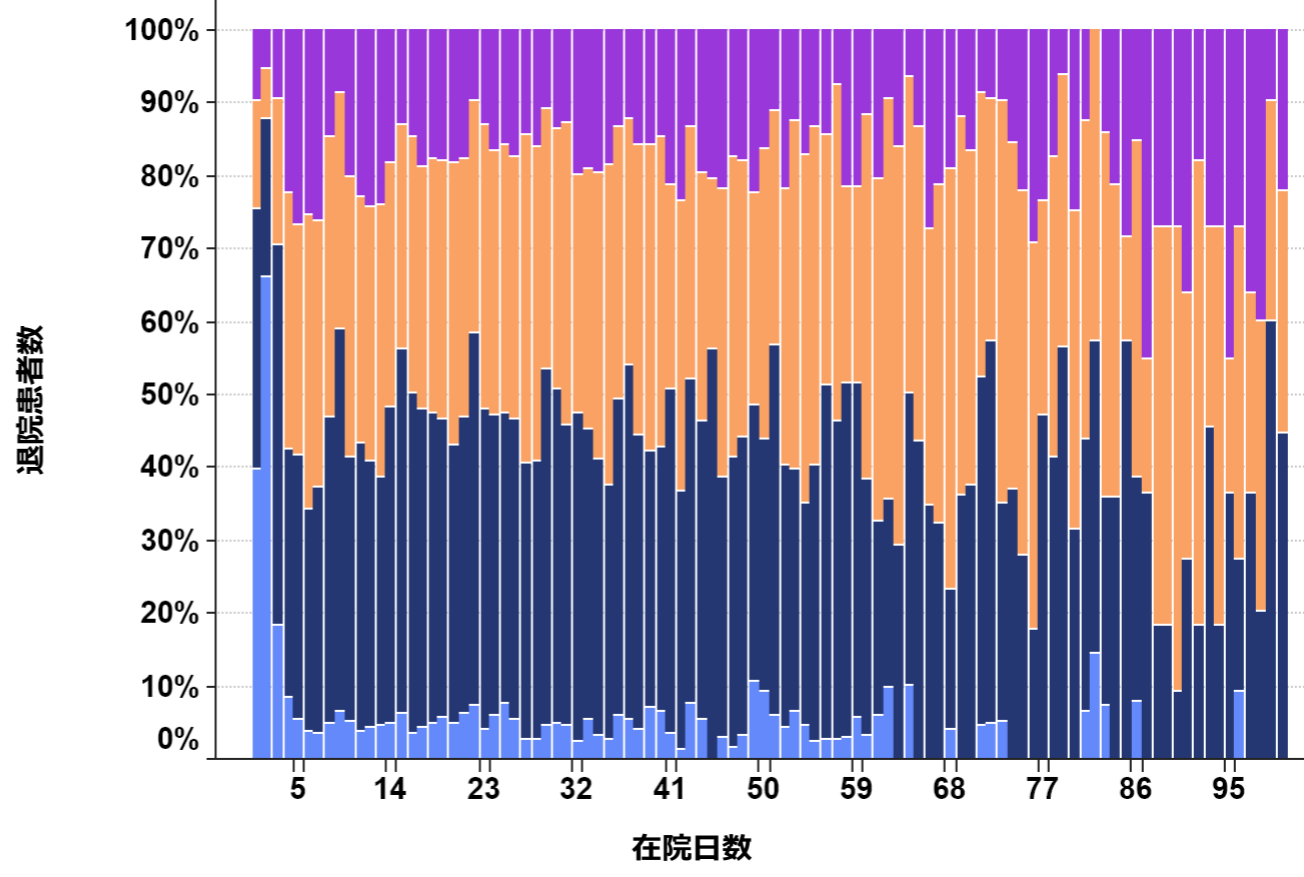
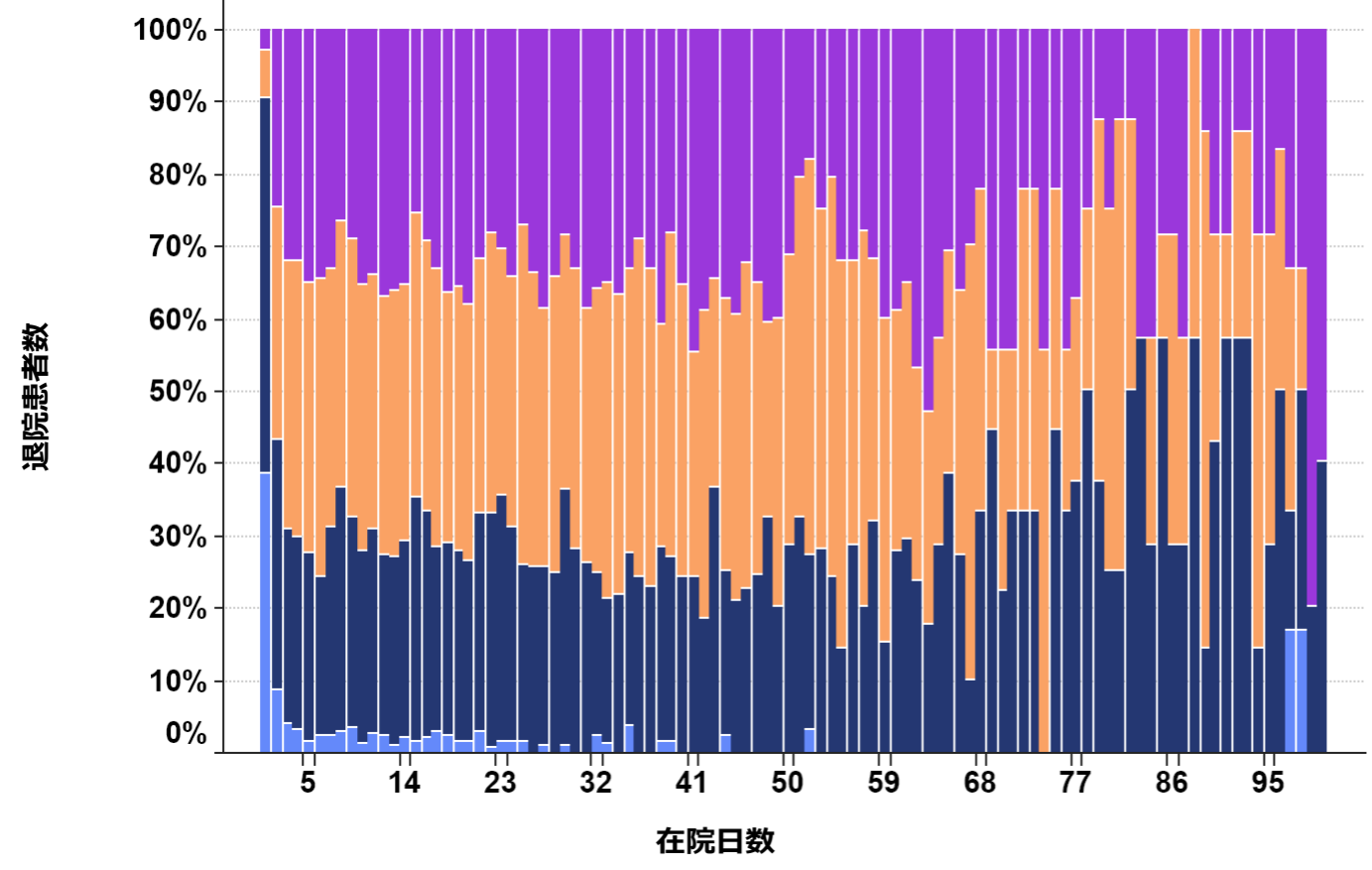
手術なし



手術あり



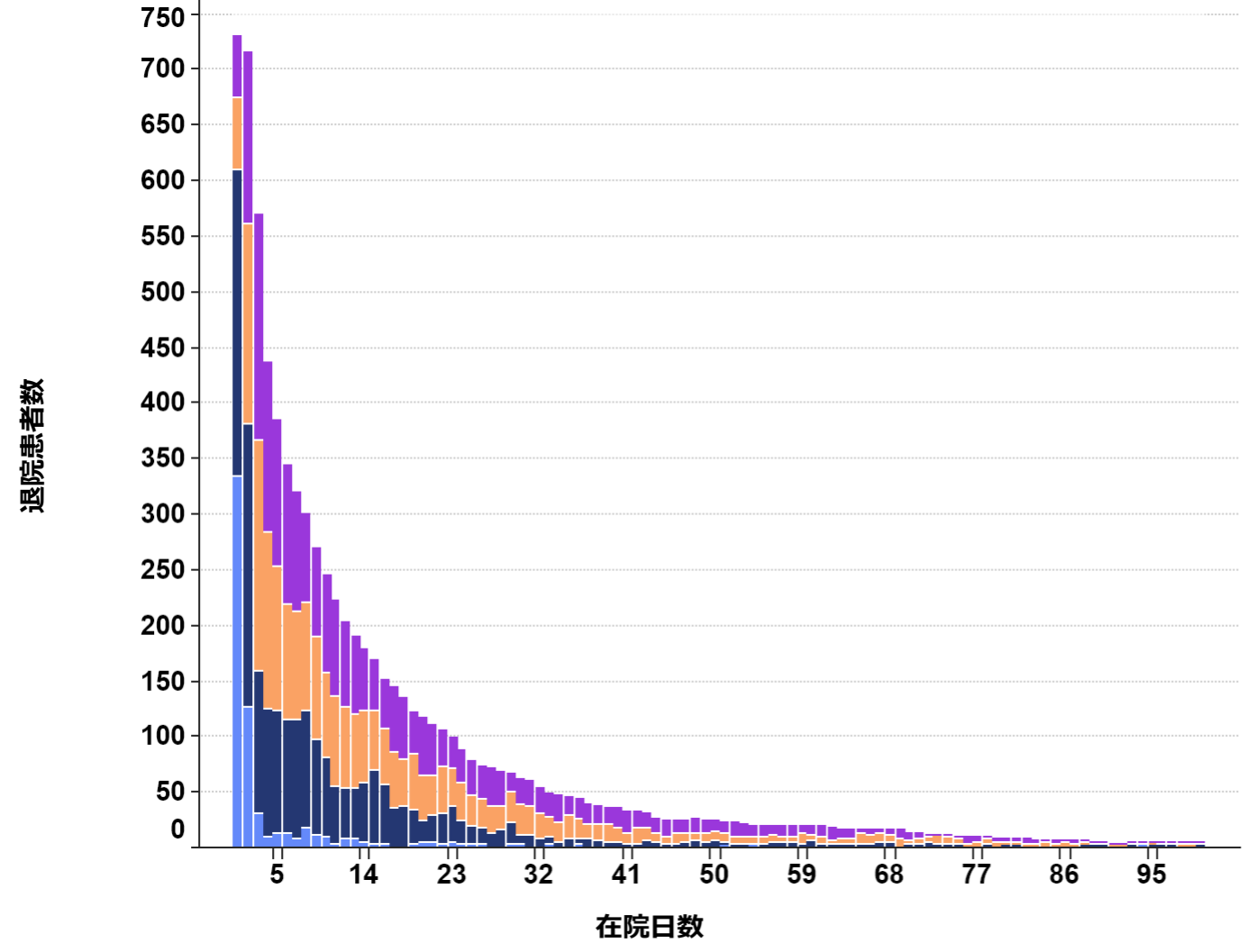
- 区分\_薬剤無\_点
- P1
  - P2
  - P3
  - P4



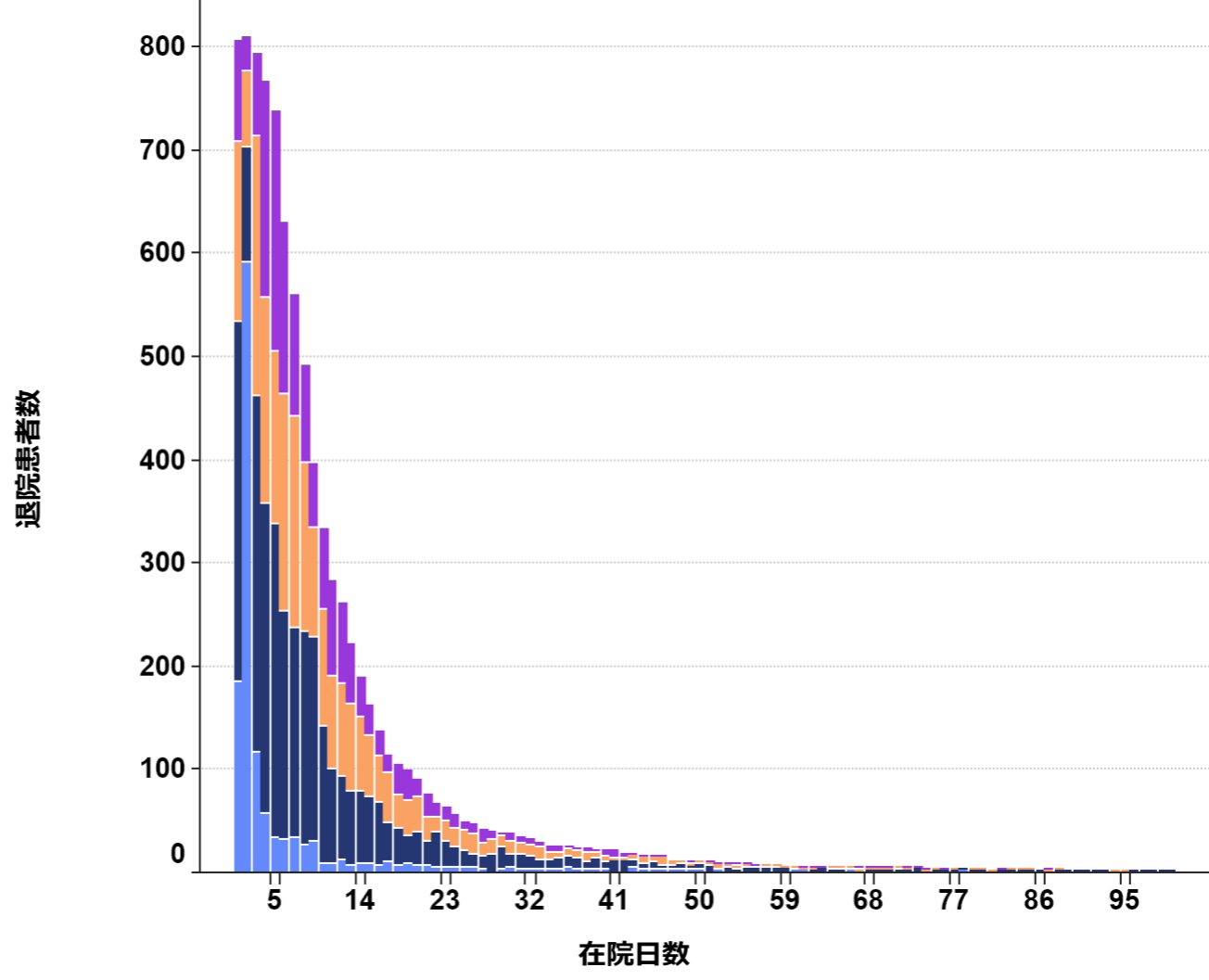
- 区分\_薬剤無\_点
- P1
  - P2
  - P3
  - P4

# 肝がん 060050:肝・肝内胆管の悪性腫瘍（続発性を含む）

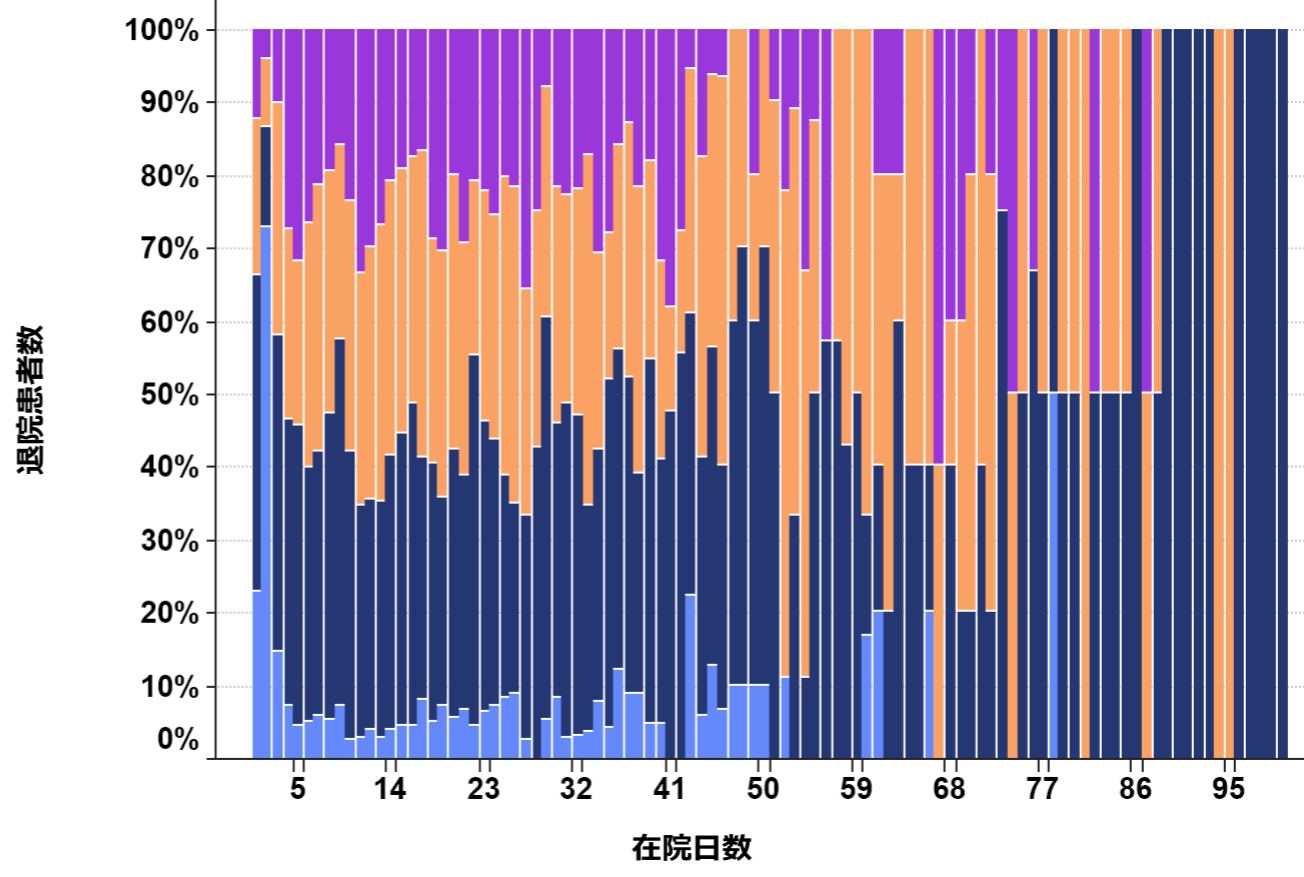
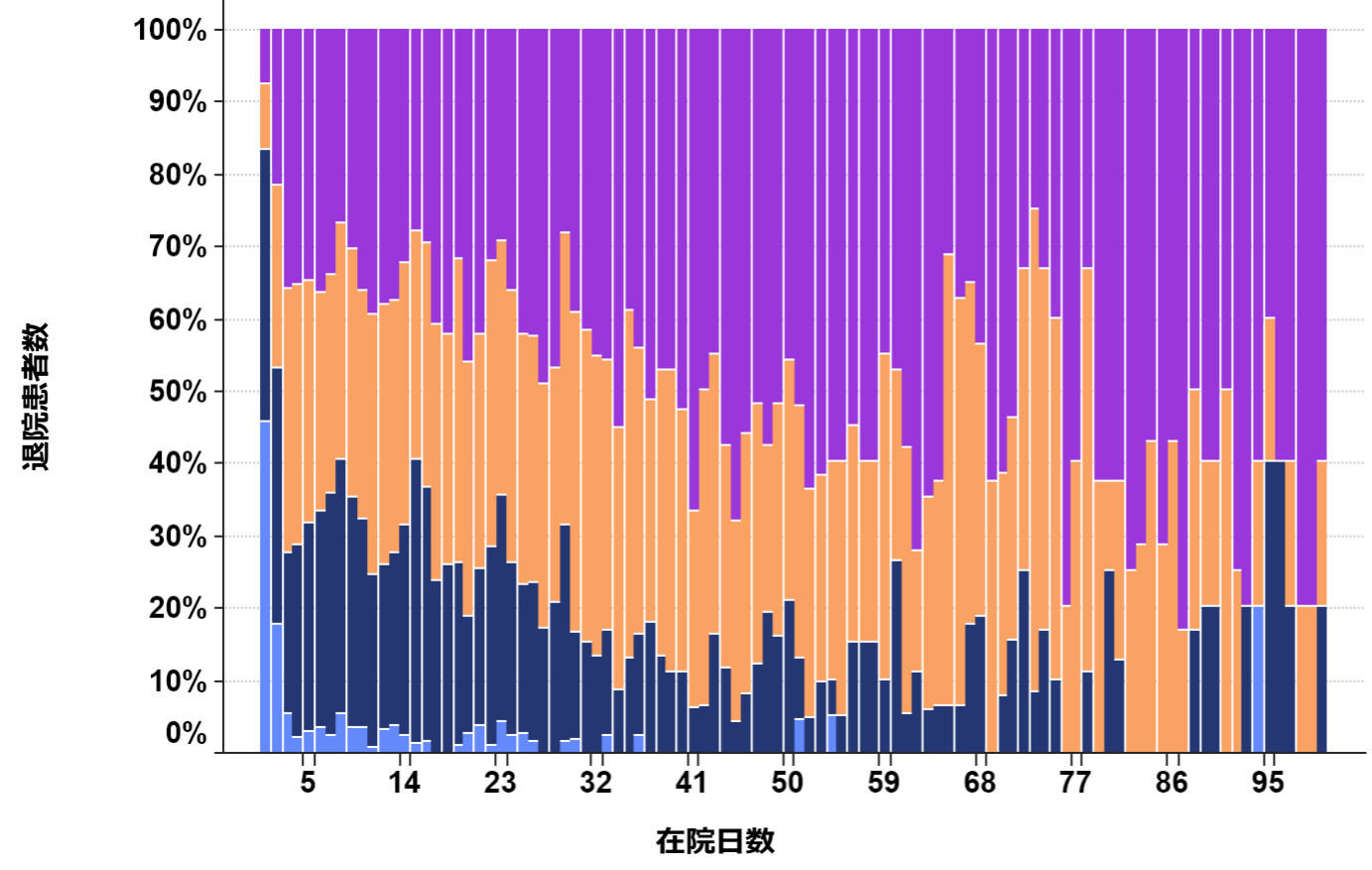
手術なし



手術あり



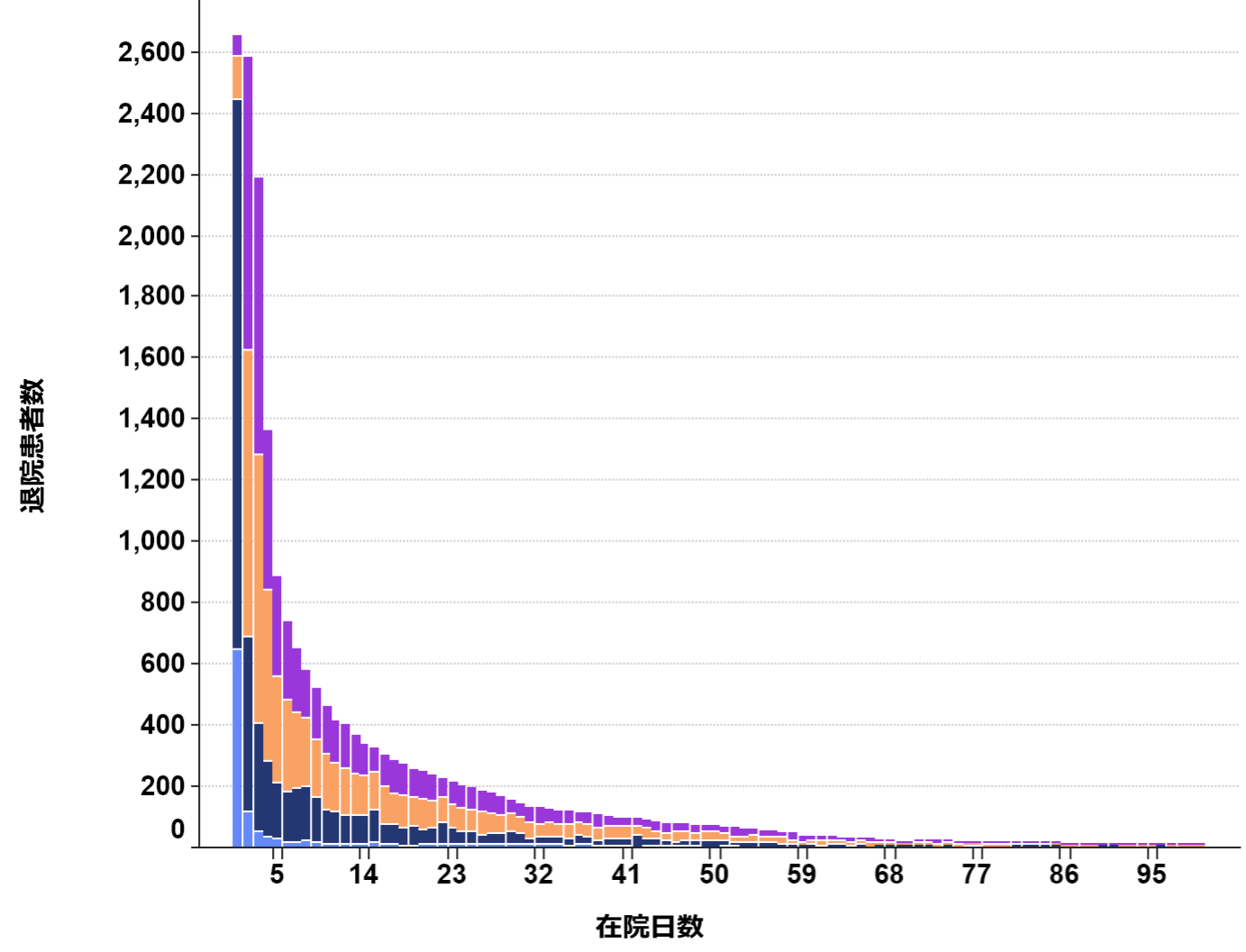
- 区分\_薬剤無\_点
- P1
  - P2
  - P3
  - P4



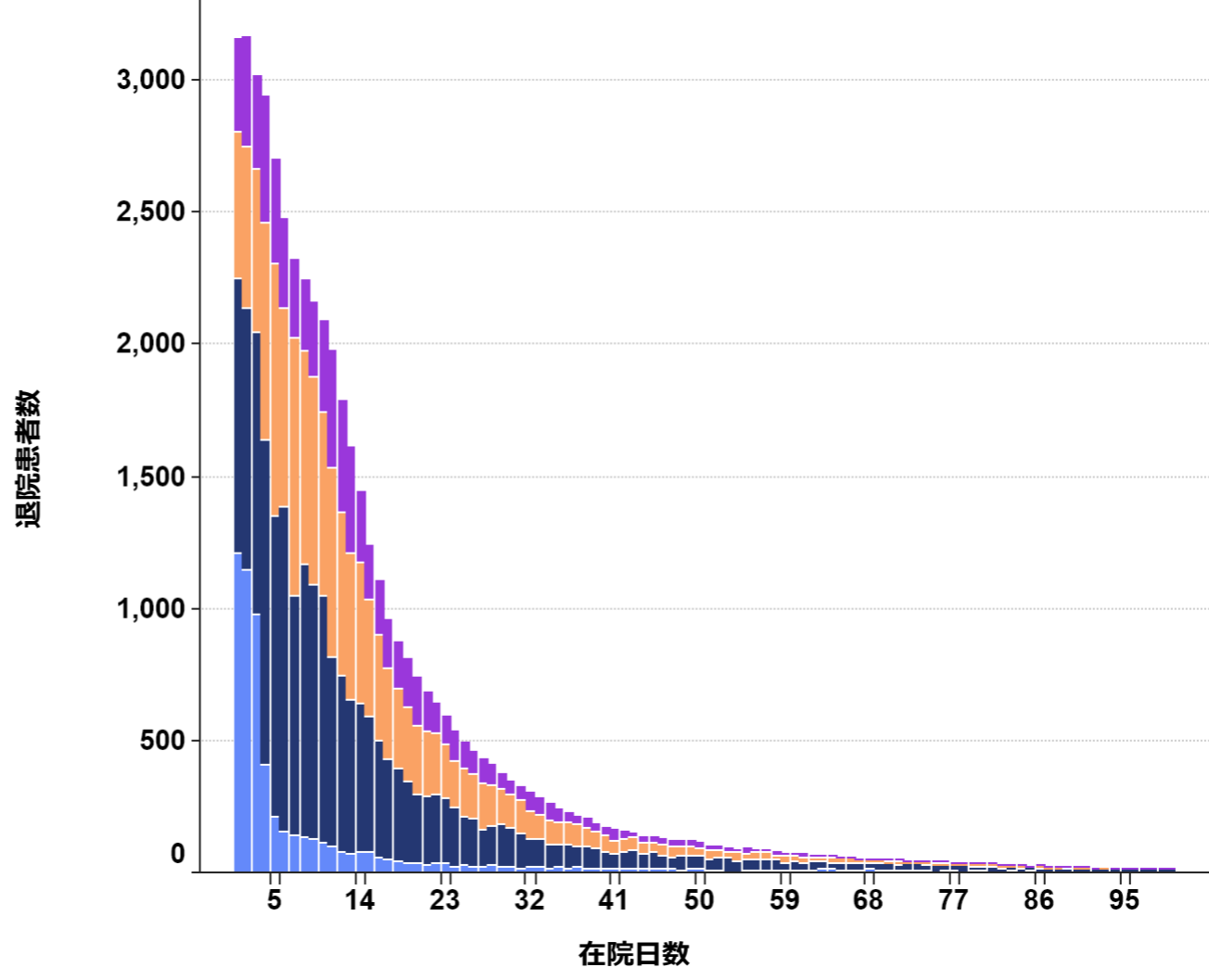
- 区分\_薬剤無\_点
- P1
  - P2
  - P3
  - P4

# 大腸がん 060035:結腸（虫垂を含む）の悪性腫瘍、060040:直腸肛門（直腸S状部から肛門）の悪性腫瘍

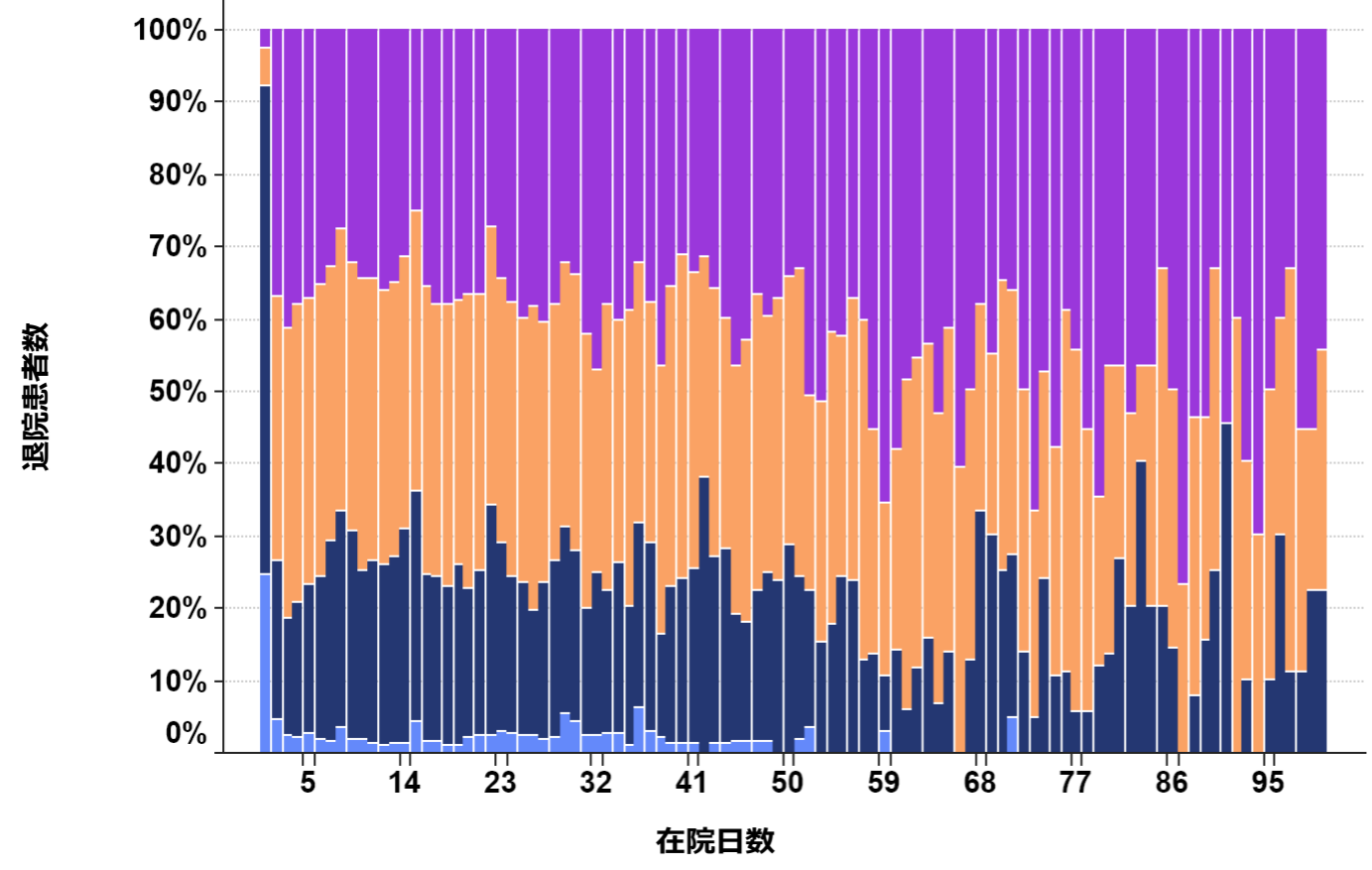
手術なし



手術あり



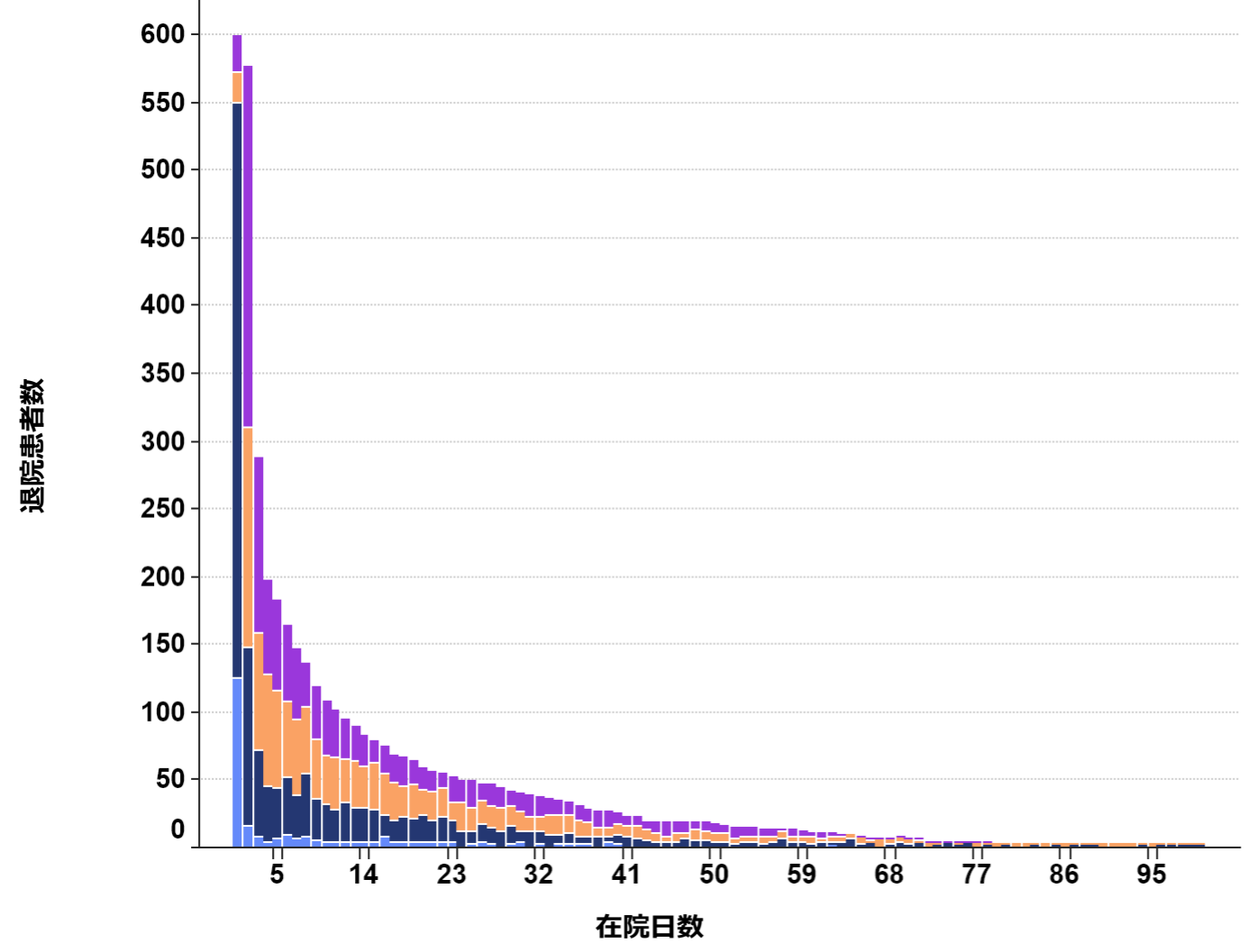
- 区分\_薬剤無\_点
- P1
  - P2
  - P3
  - P4



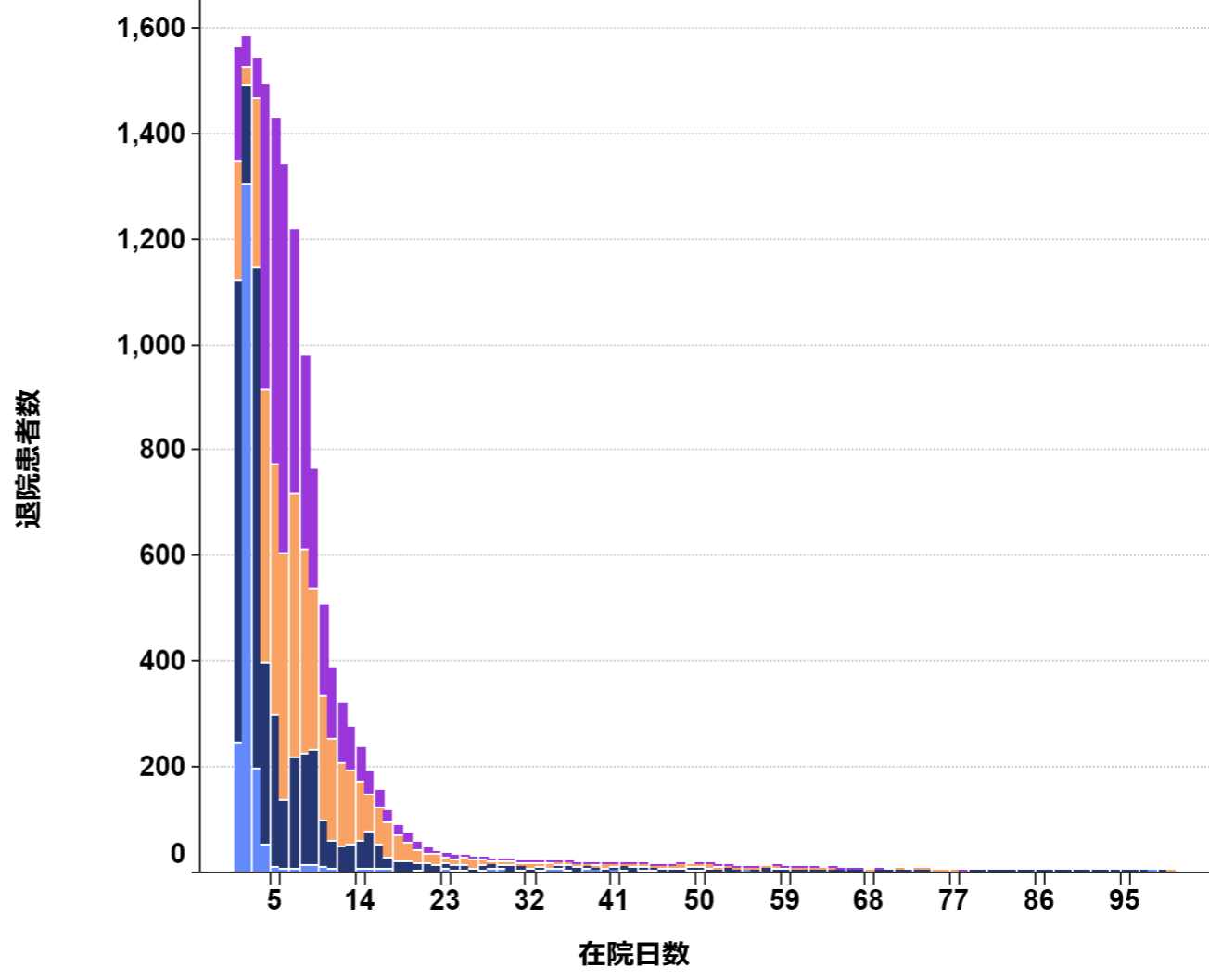
- 区分\_薬剤無\_点
- P1
  - P2
  - P3
  - P4

# 乳がん 090010:乳房の悪性腫瘍

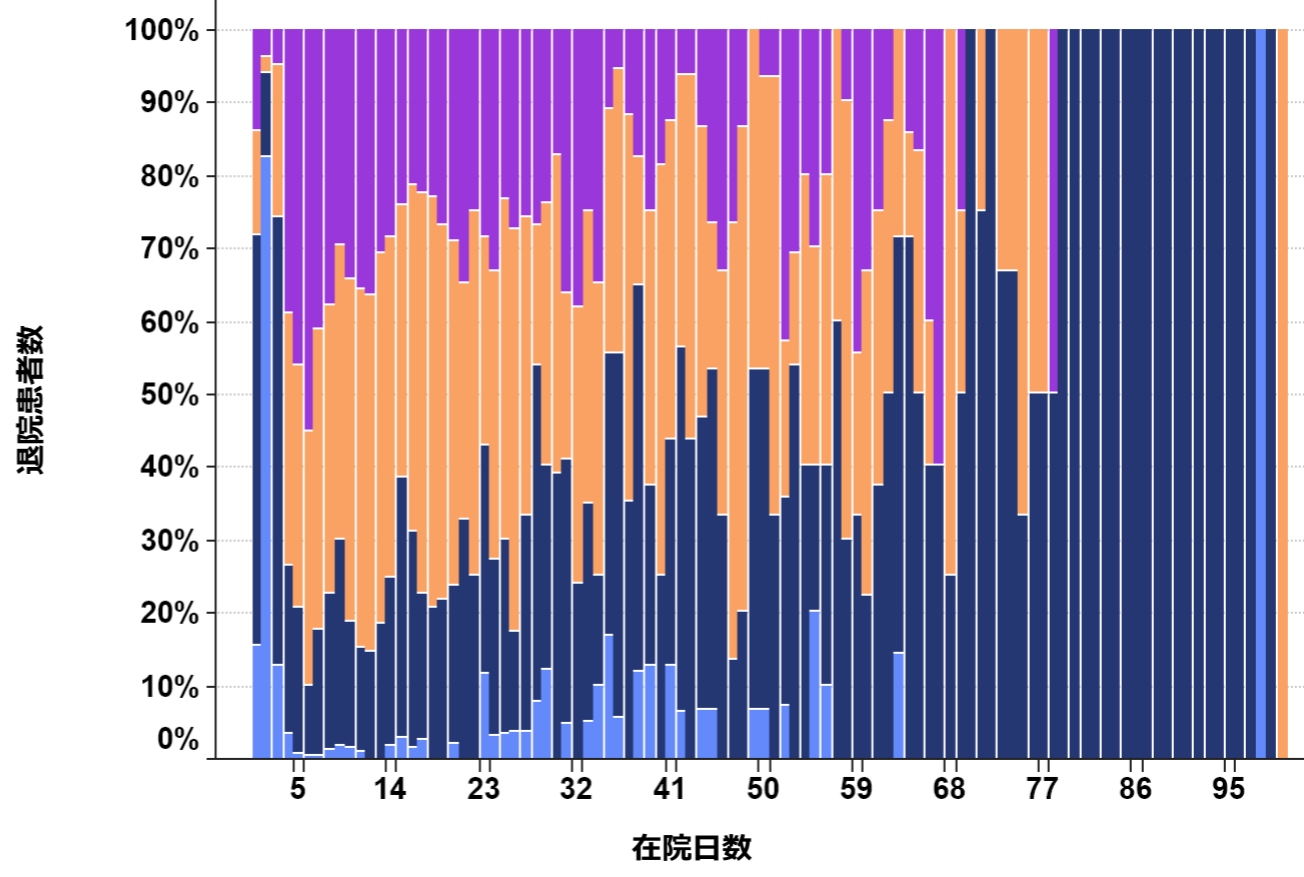
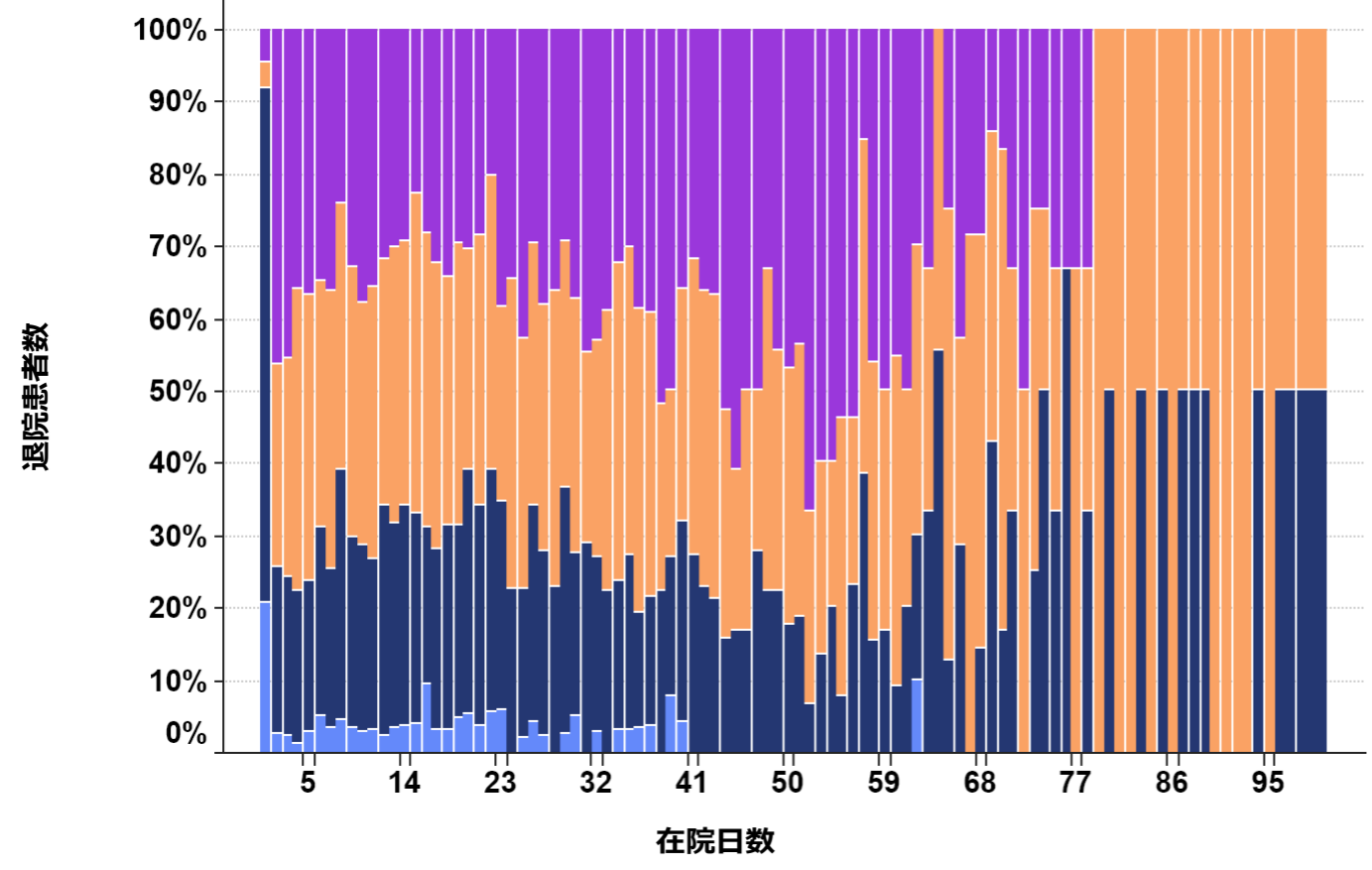
手術なし



手術あり



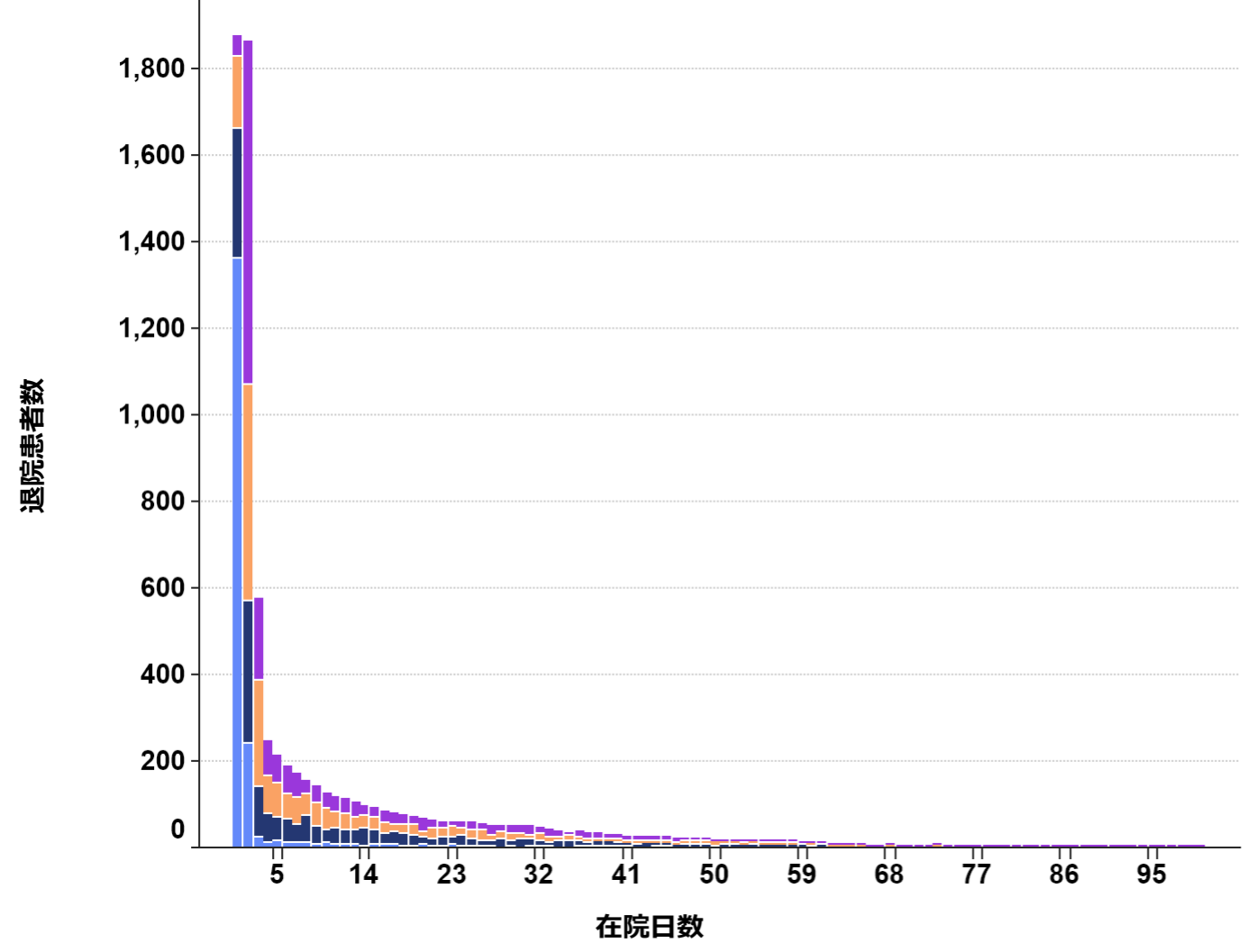
- 区分\_薬剤無\_点
- P1
  - P2
  - P3
  - P4



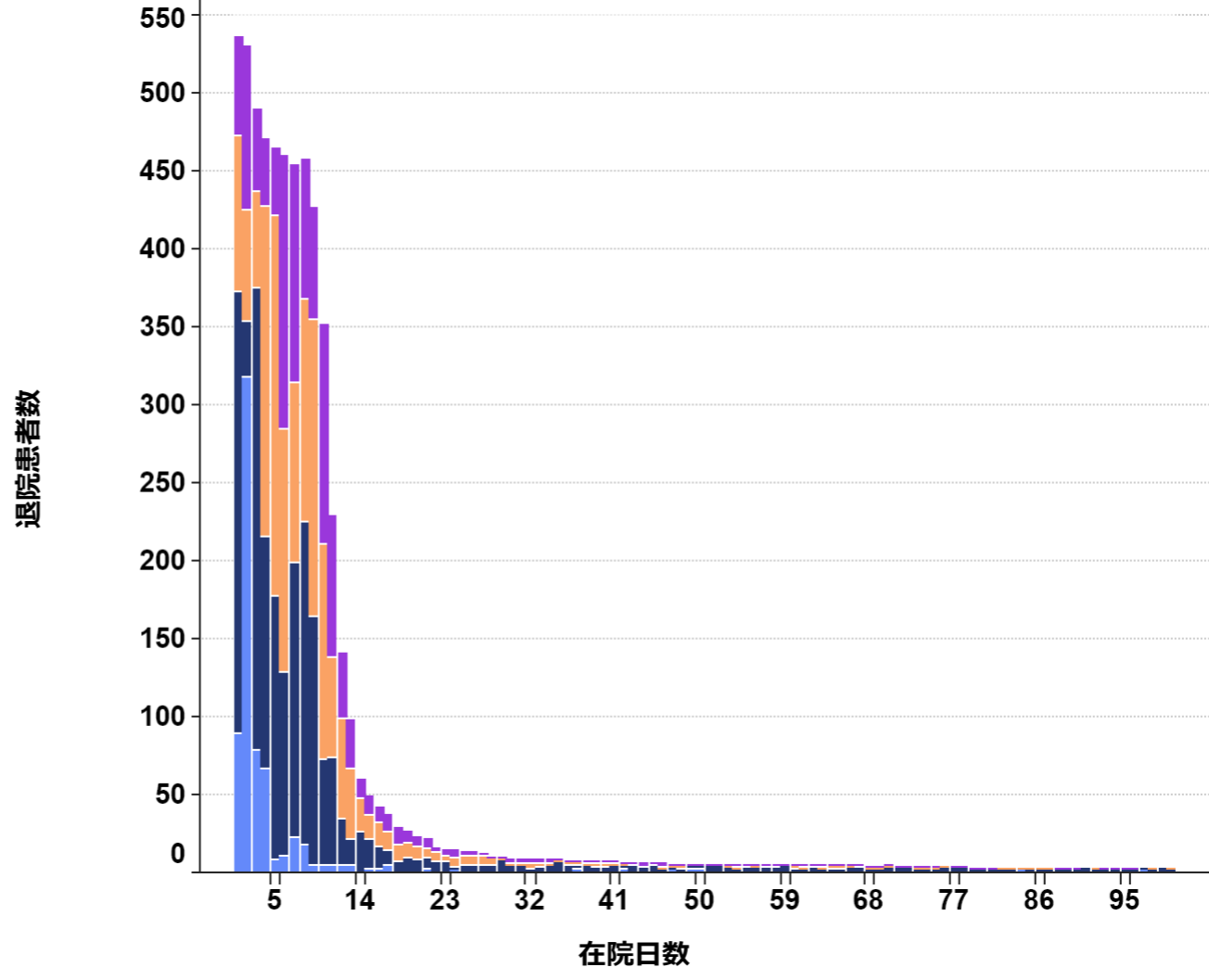
- 区分\_薬剤無\_点
- P1
  - P2
  - P3
  - P4

# 前立腺がん 110080:前立腺の悪性腫瘍

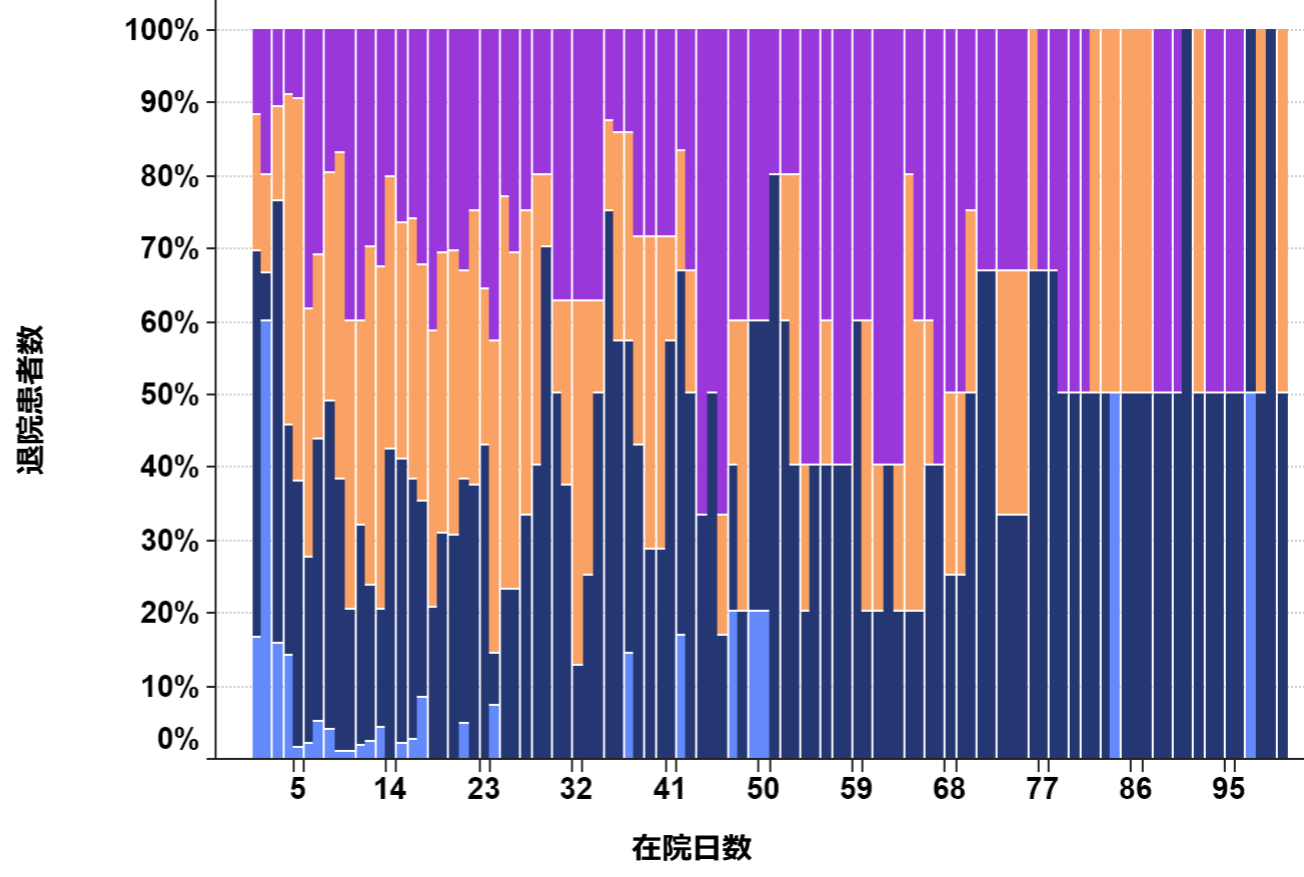
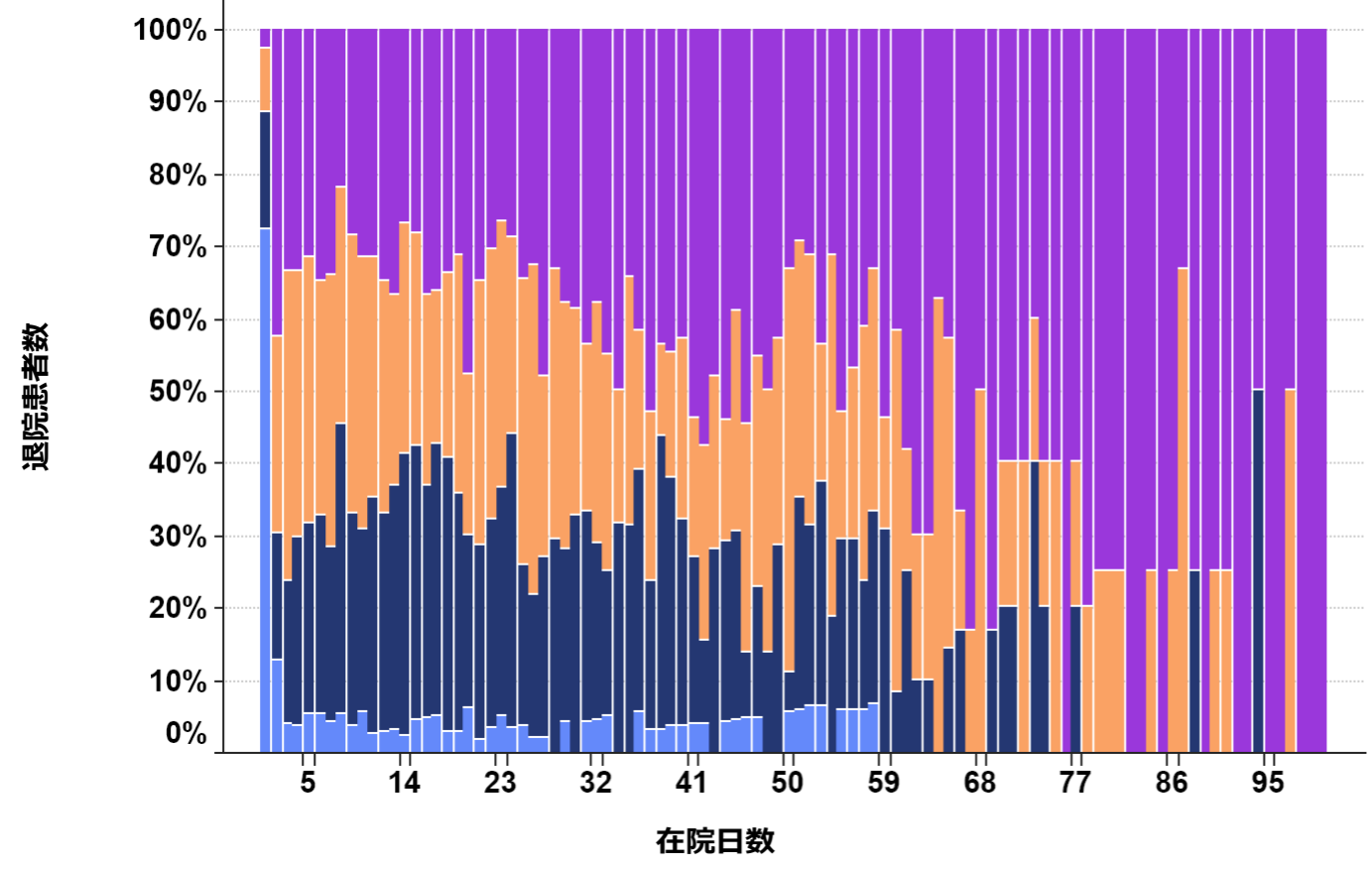
手術なし



手術あり



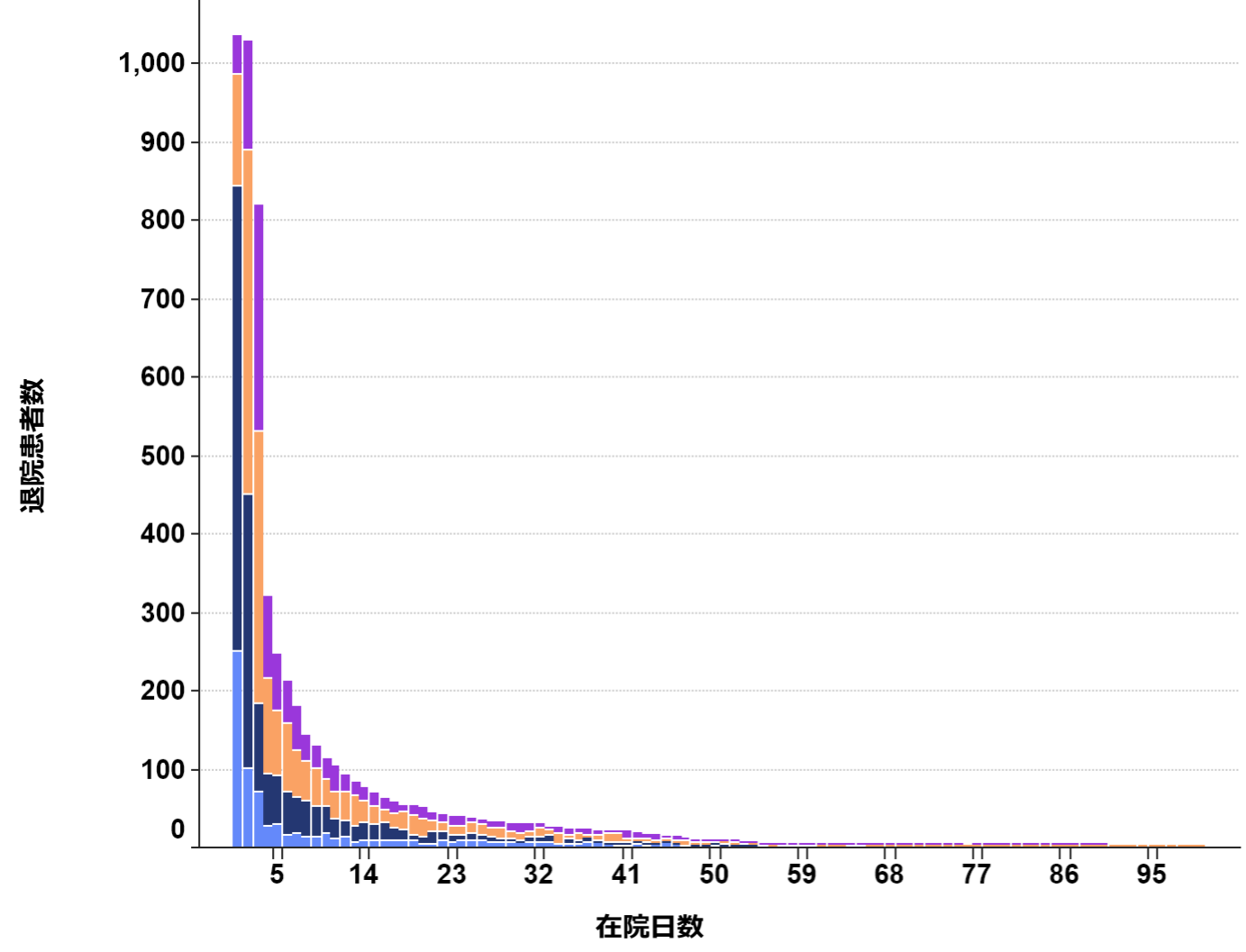
- 区分\_薬剤無\_点
- P1
  - P2
  - P3
  - P4



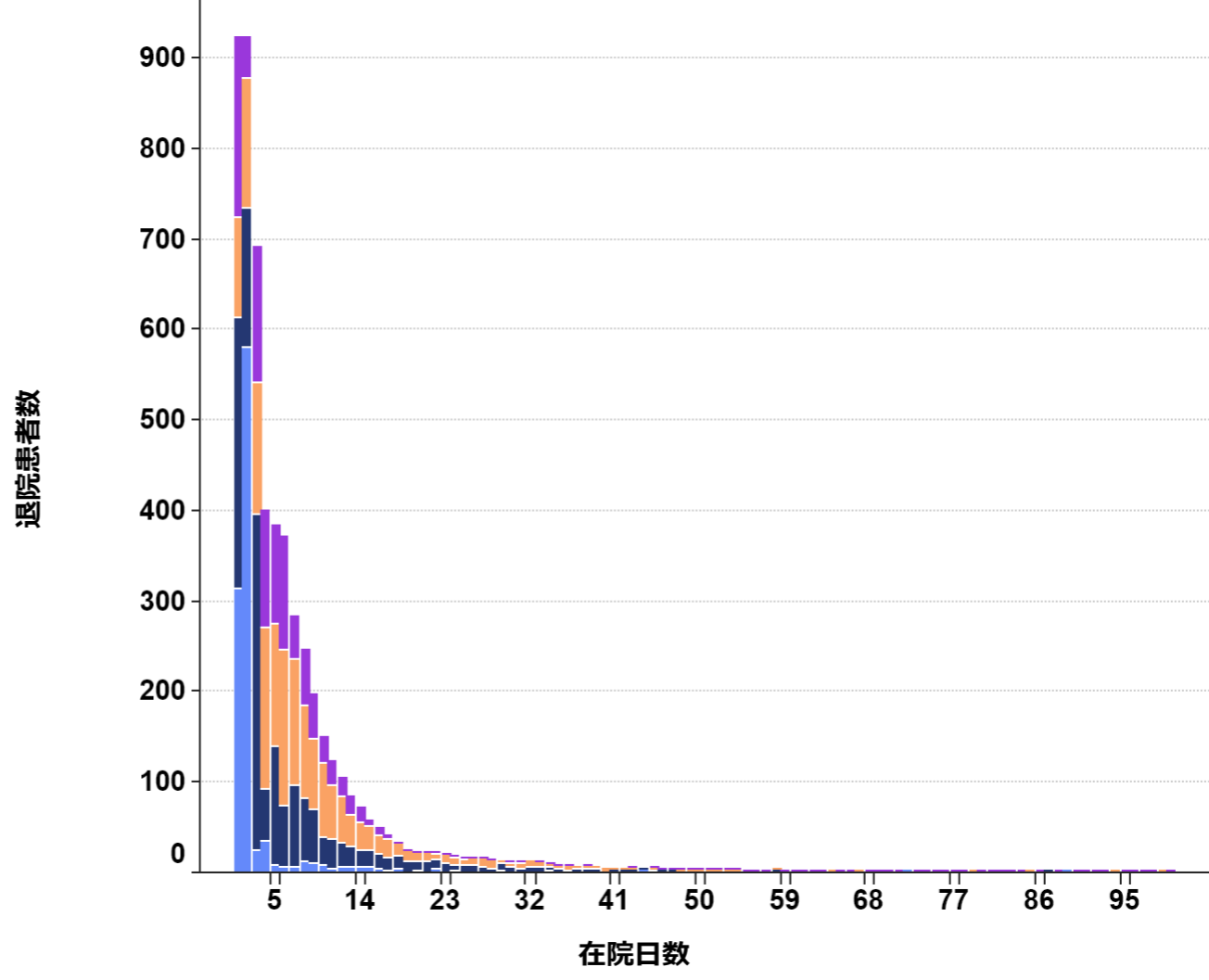
- 区分\_薬剤無\_点
- P1
  - P2
  - P3
  - P4

# 子宮がん 12002X:子宮頸・体部の悪性腫瘍

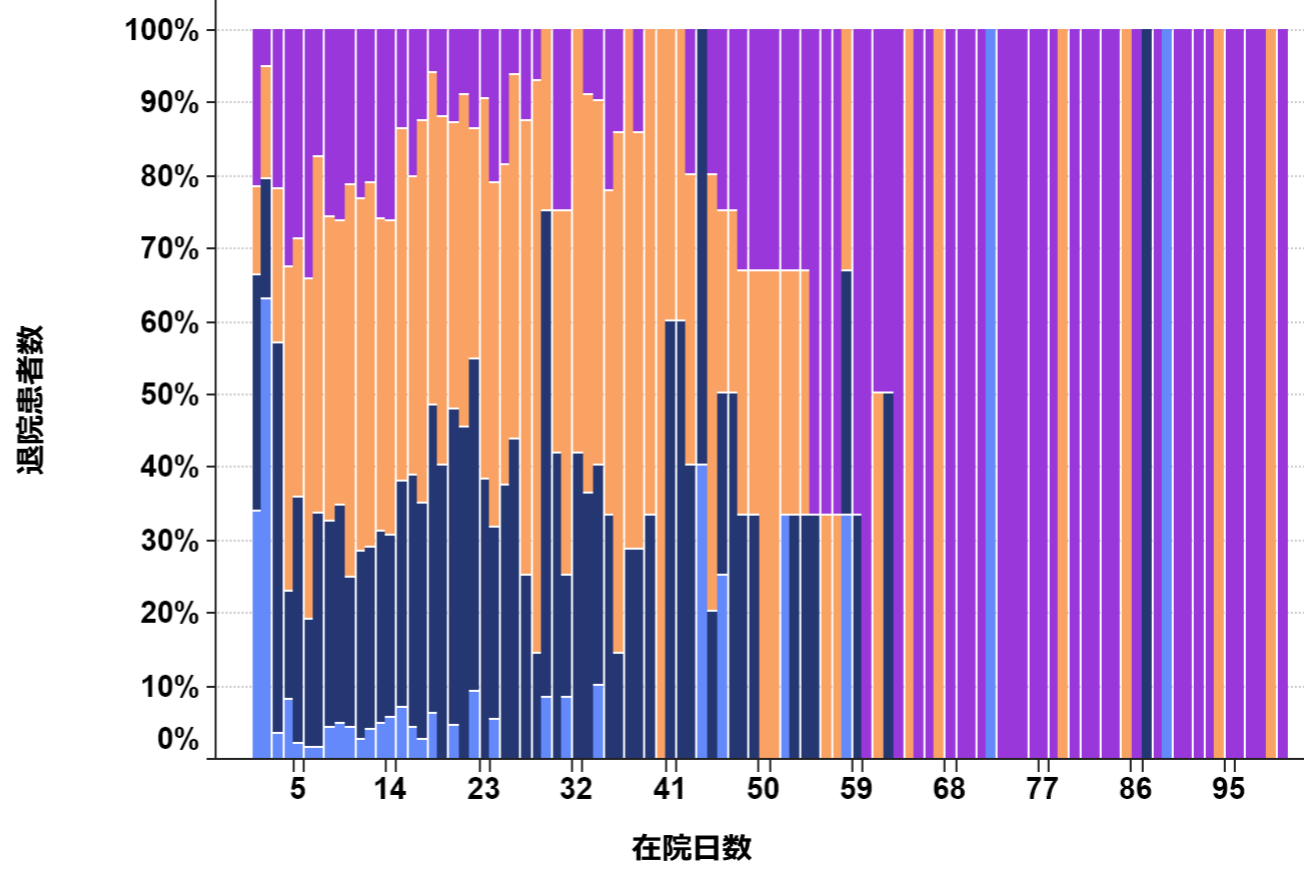
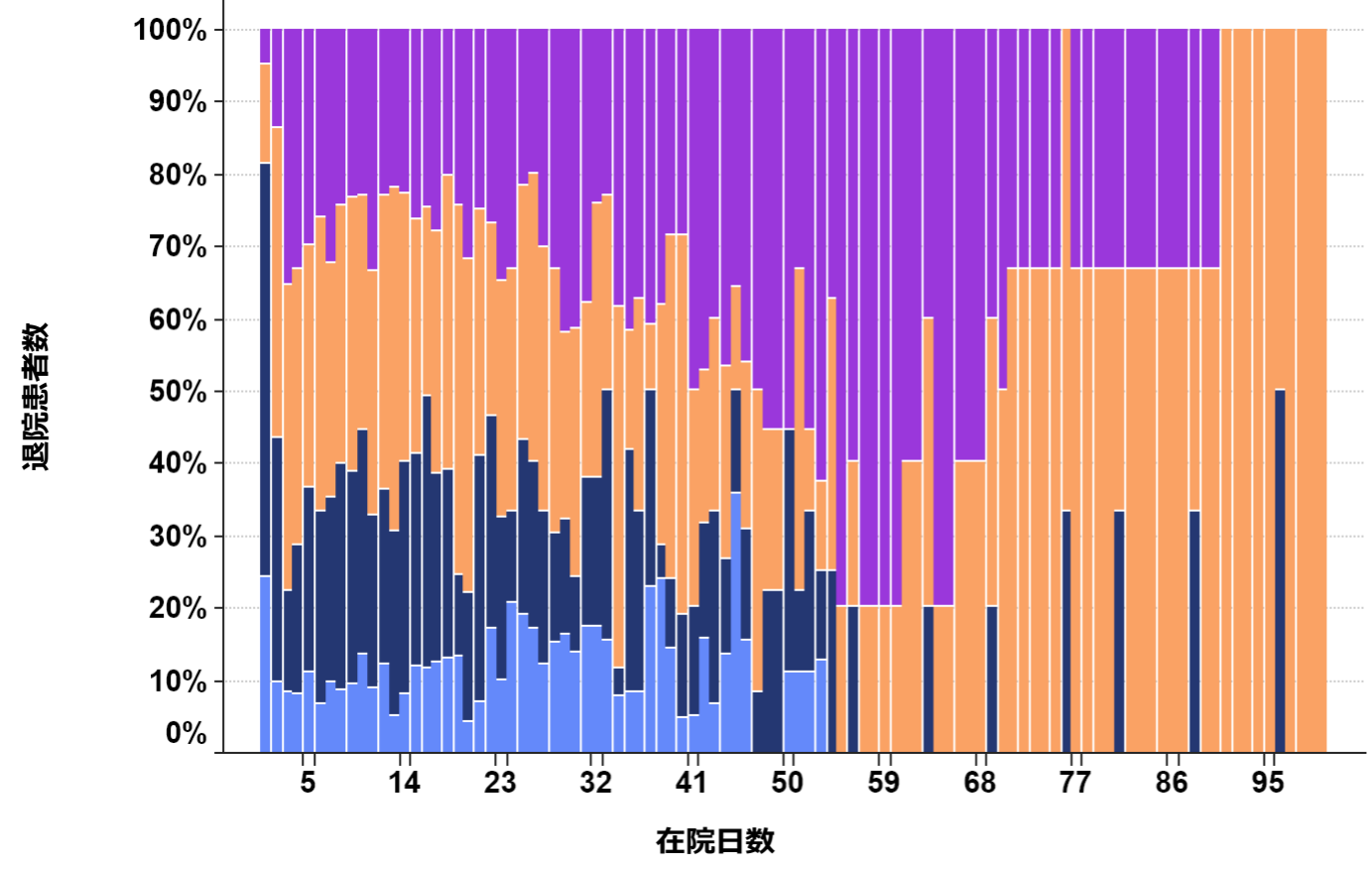
手術なし



手術あり



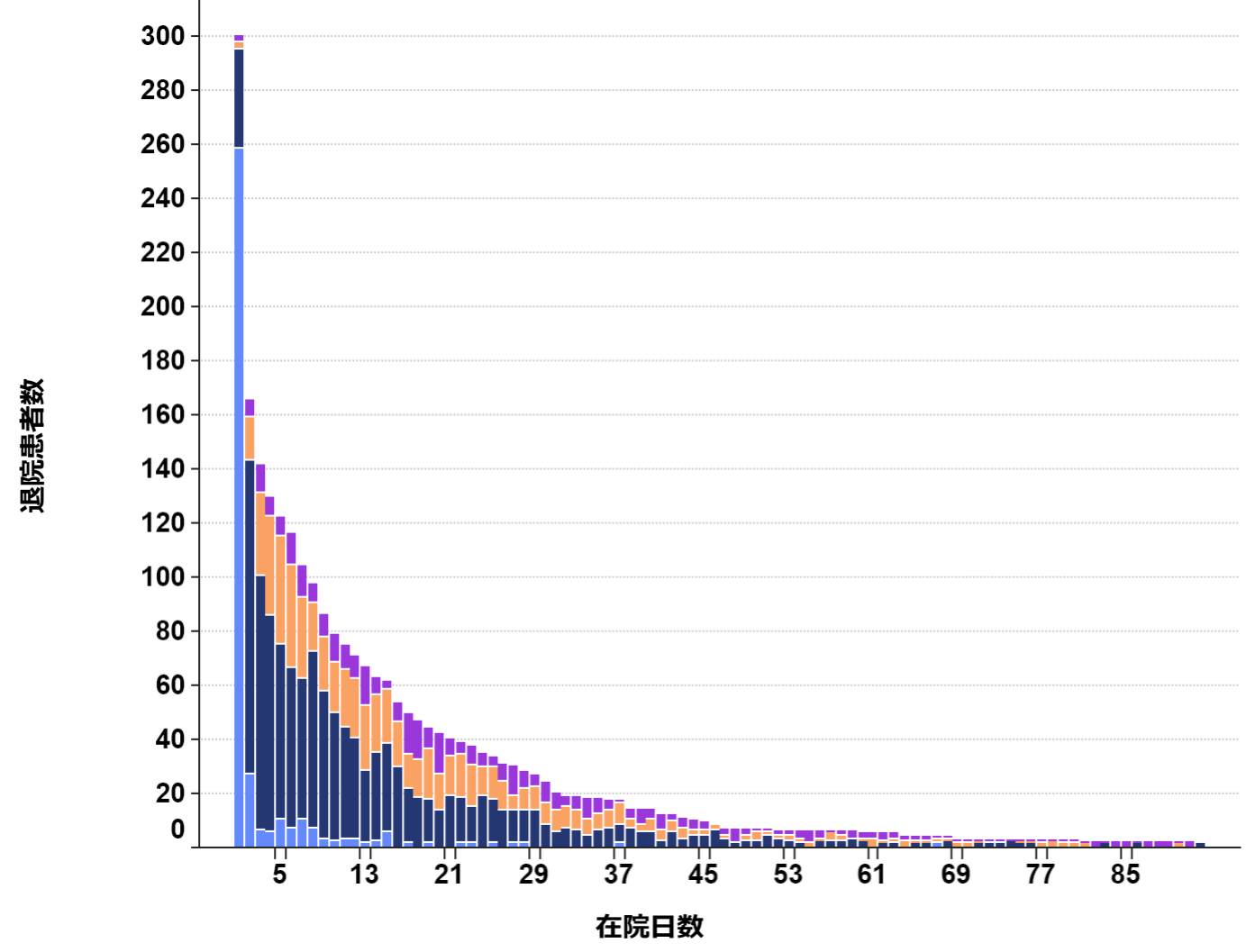
- 区分\_薬剤無\_点
- P1
  - P2
  - P3
  - P4



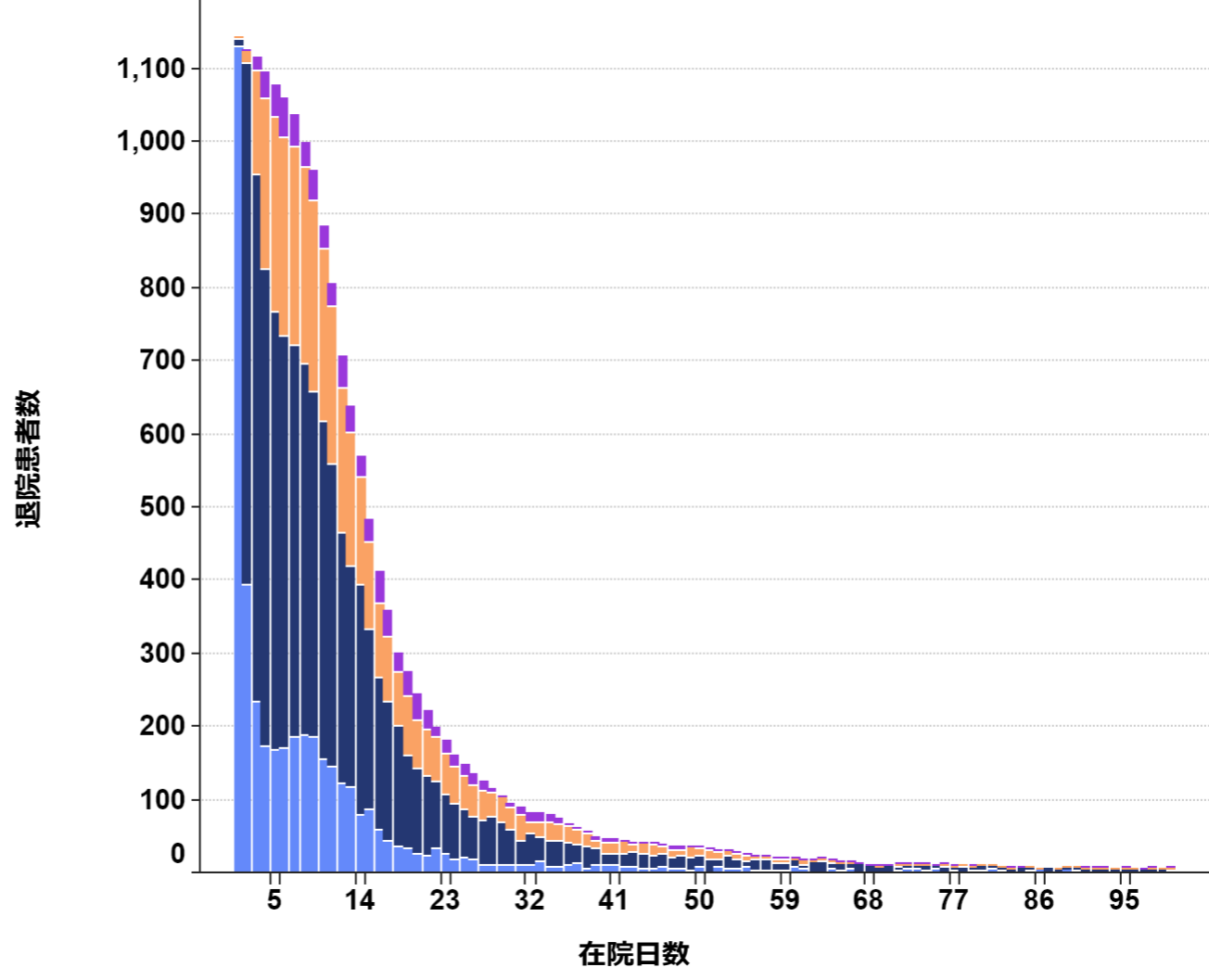
- 区分\_薬剤無\_点
- P1
  - P2
  - P3
  - P4

# 心疾患① 050030:急性心筋梗塞（続発性合併症を含む）、再発性心筋梗塞

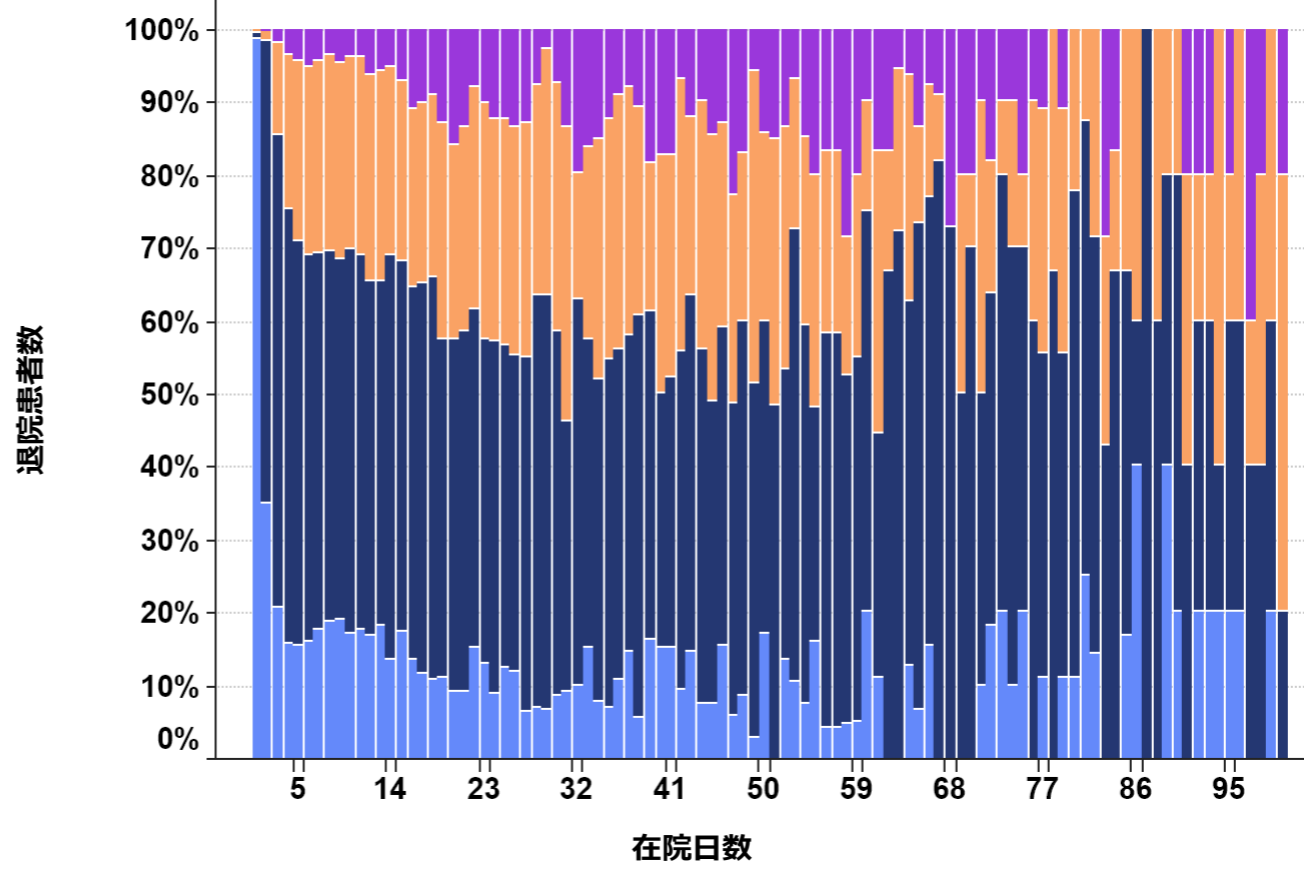
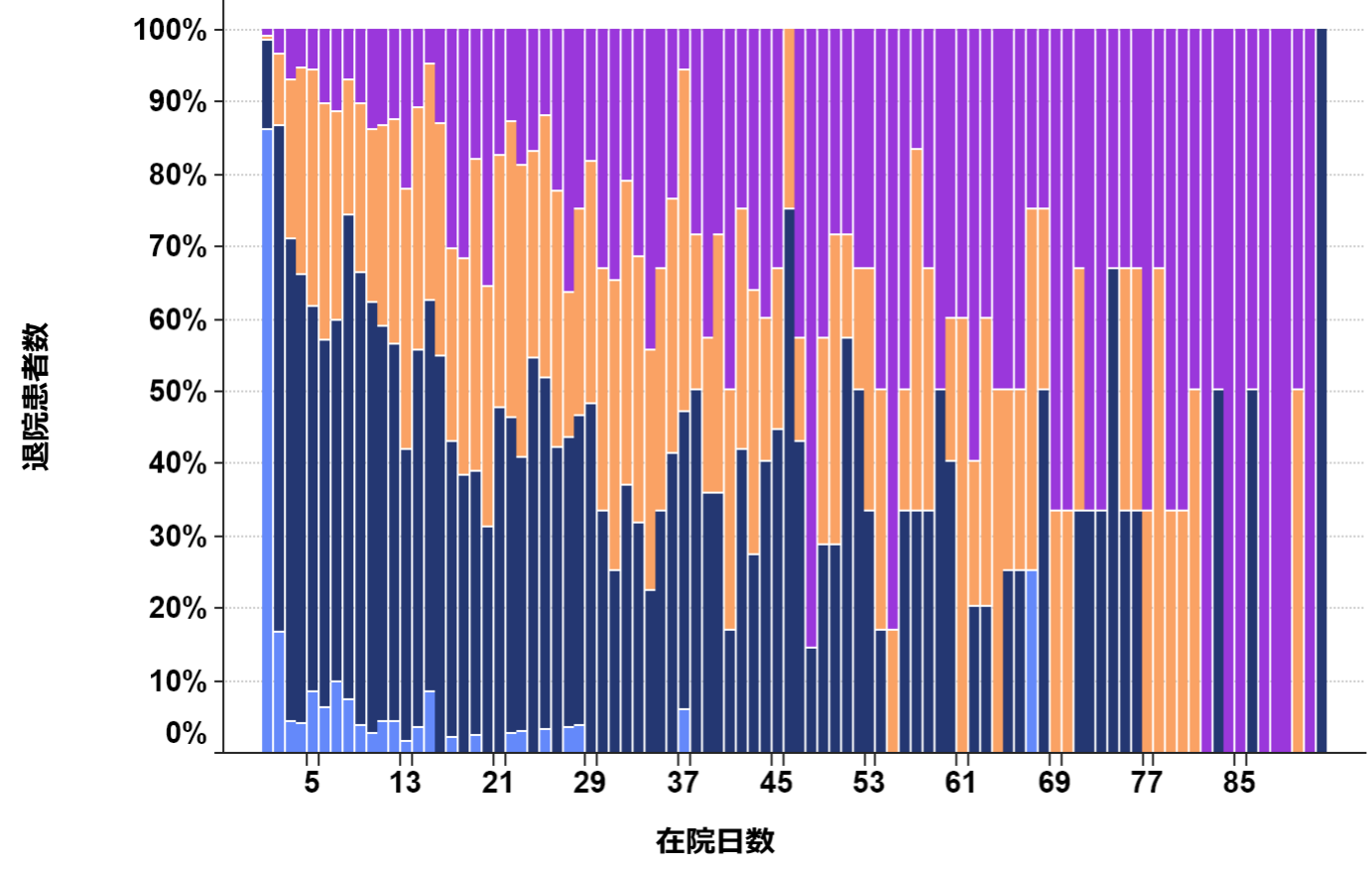
手術なし



手術あり



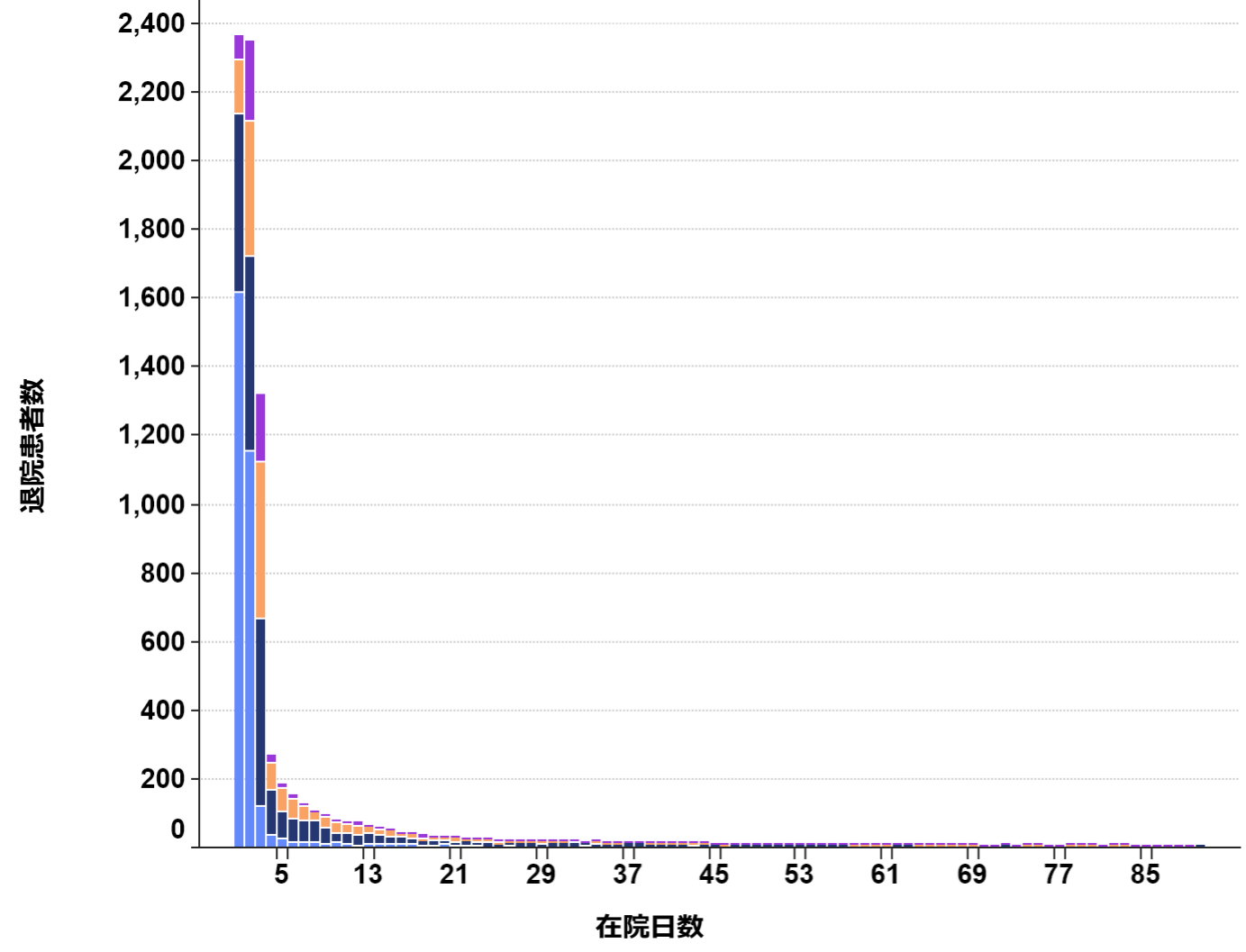
- 区分\_薬剤無\_点
- P1
  - P2
  - P3
  - P4



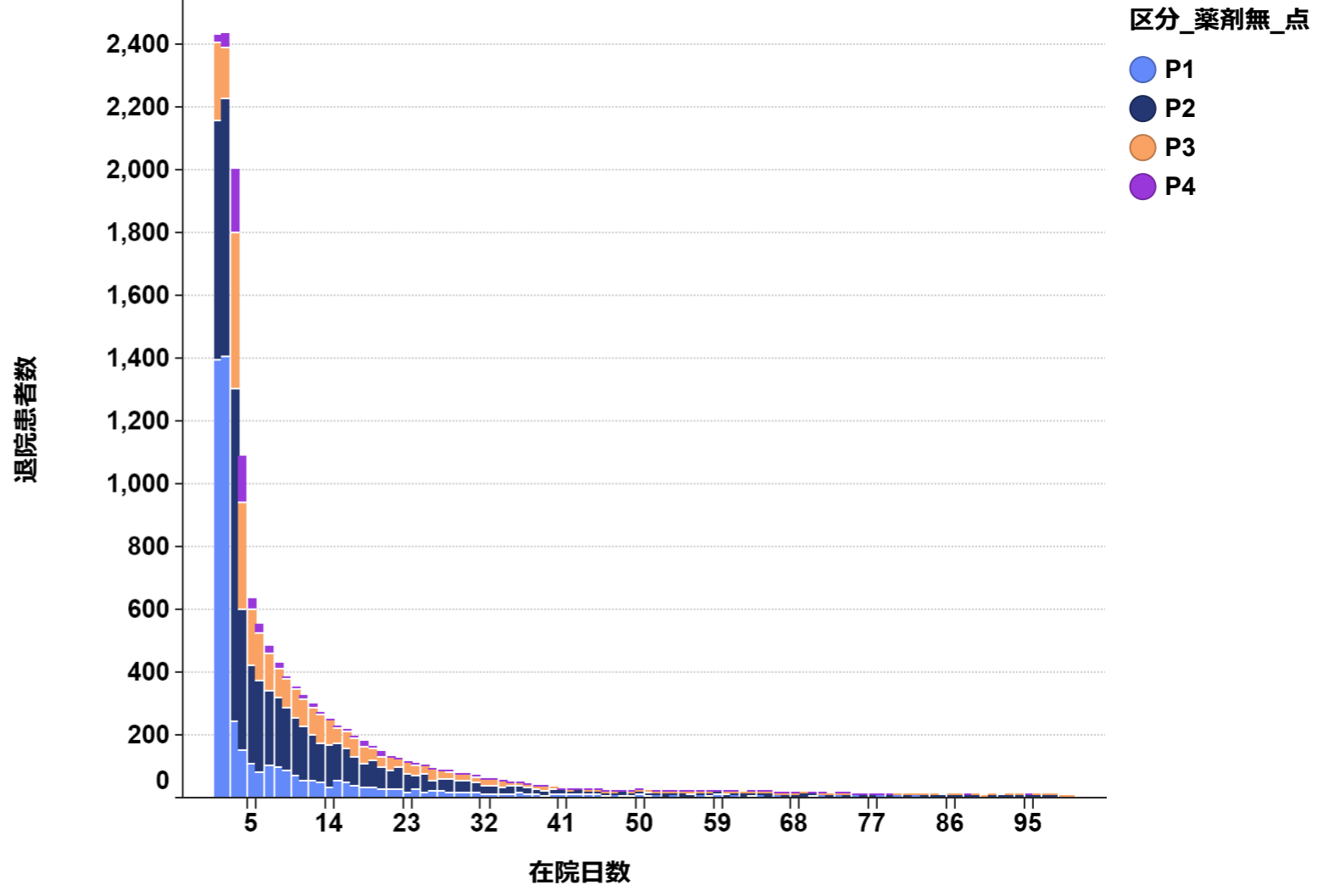
- 区分\_薬剤無\_点
- P1
  - P2
  - P3
  - P4

# 心疾患② 050050:狭心症、慢性虚血性心疾患

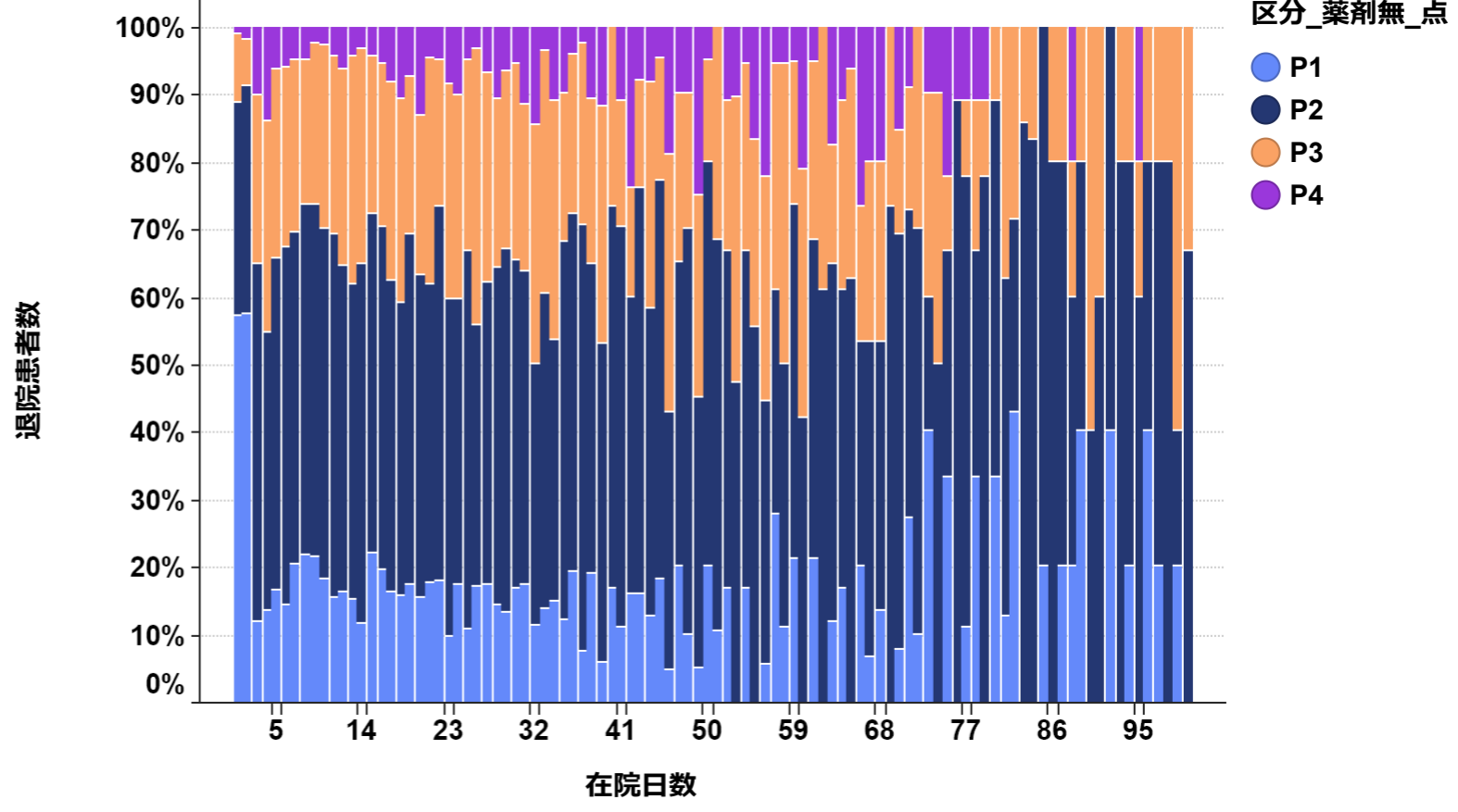
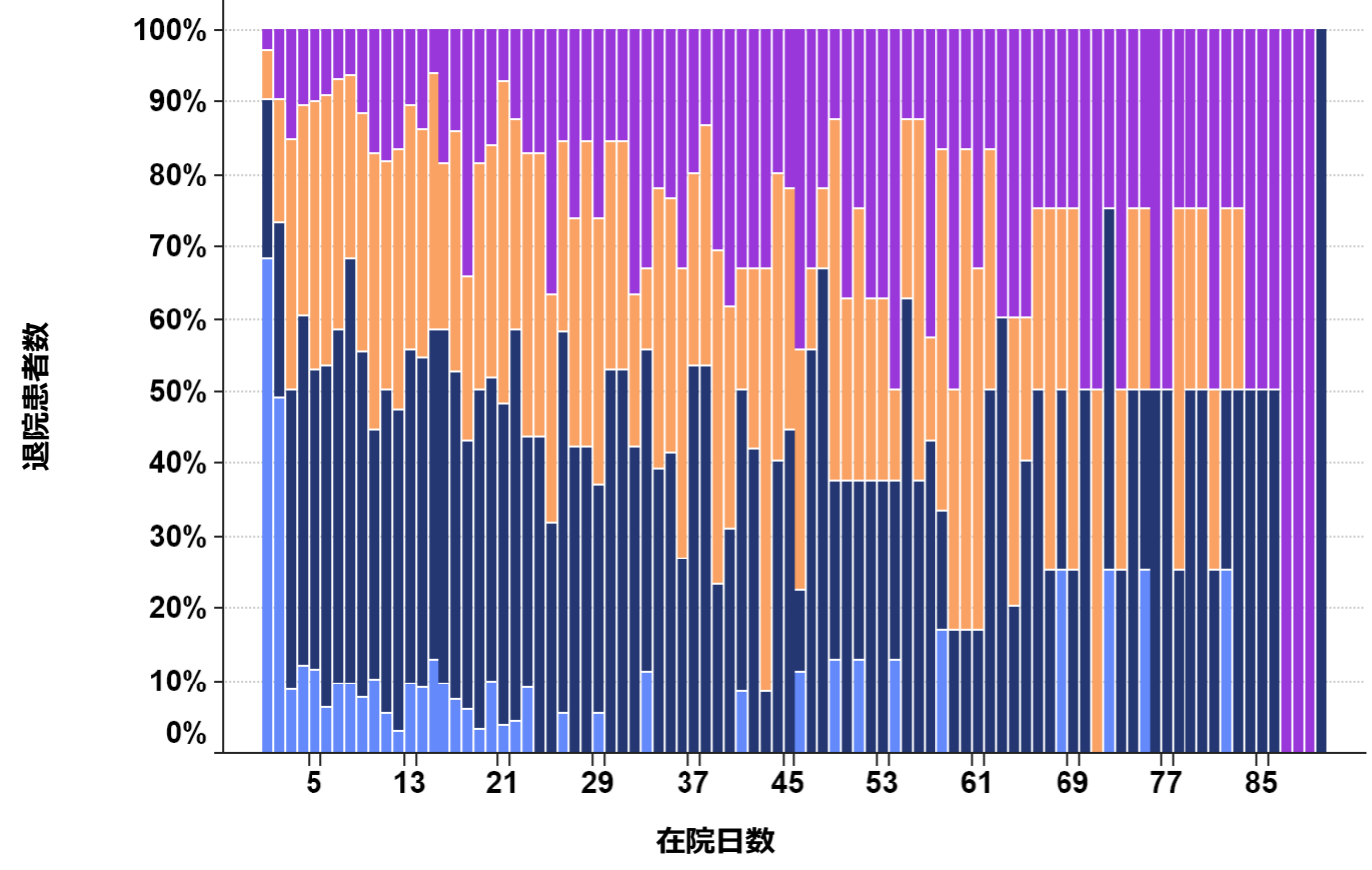
手術なし



手術あり



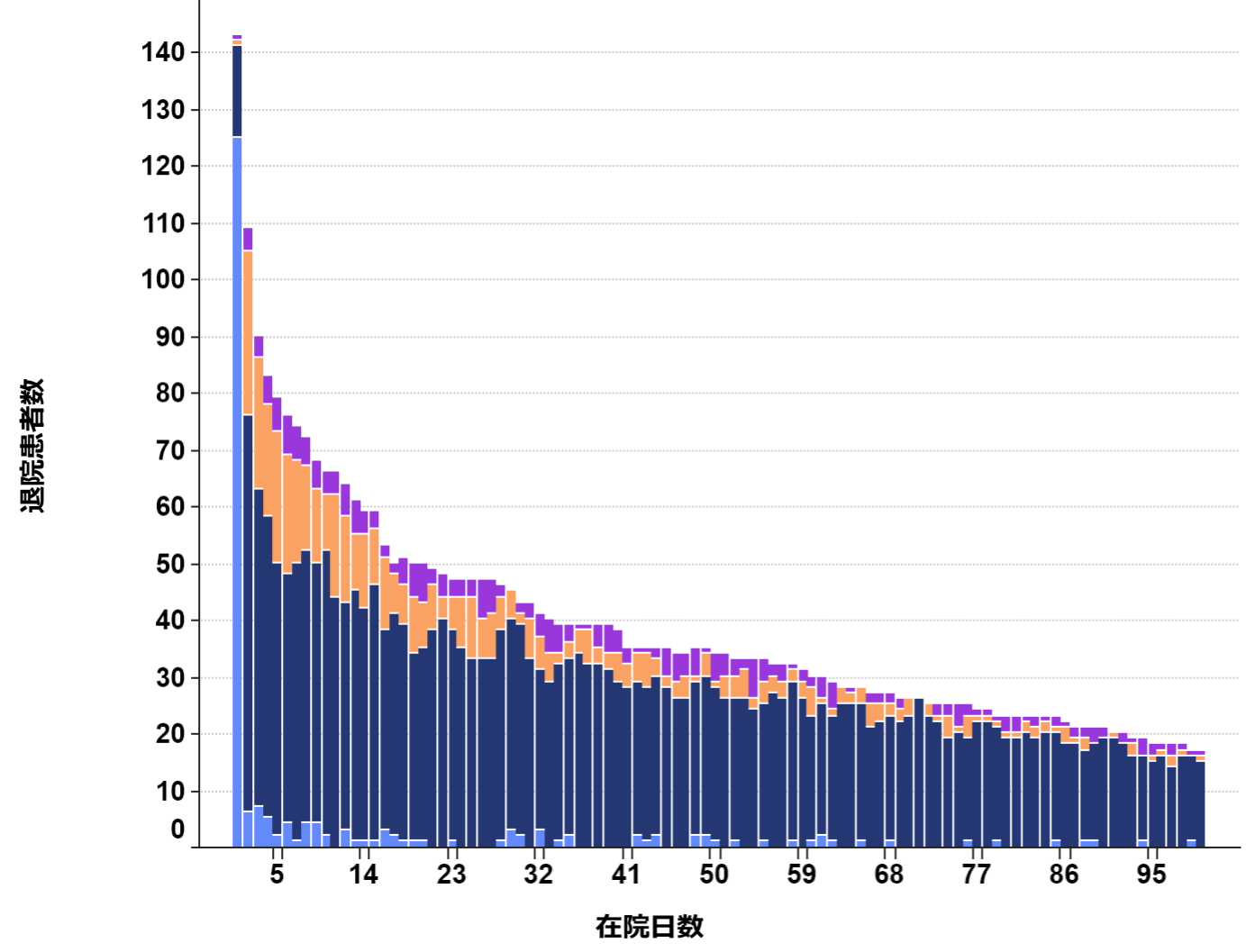
- 区分\_薬剤無\_点
- P1
  - P2
  - P3
  - P4



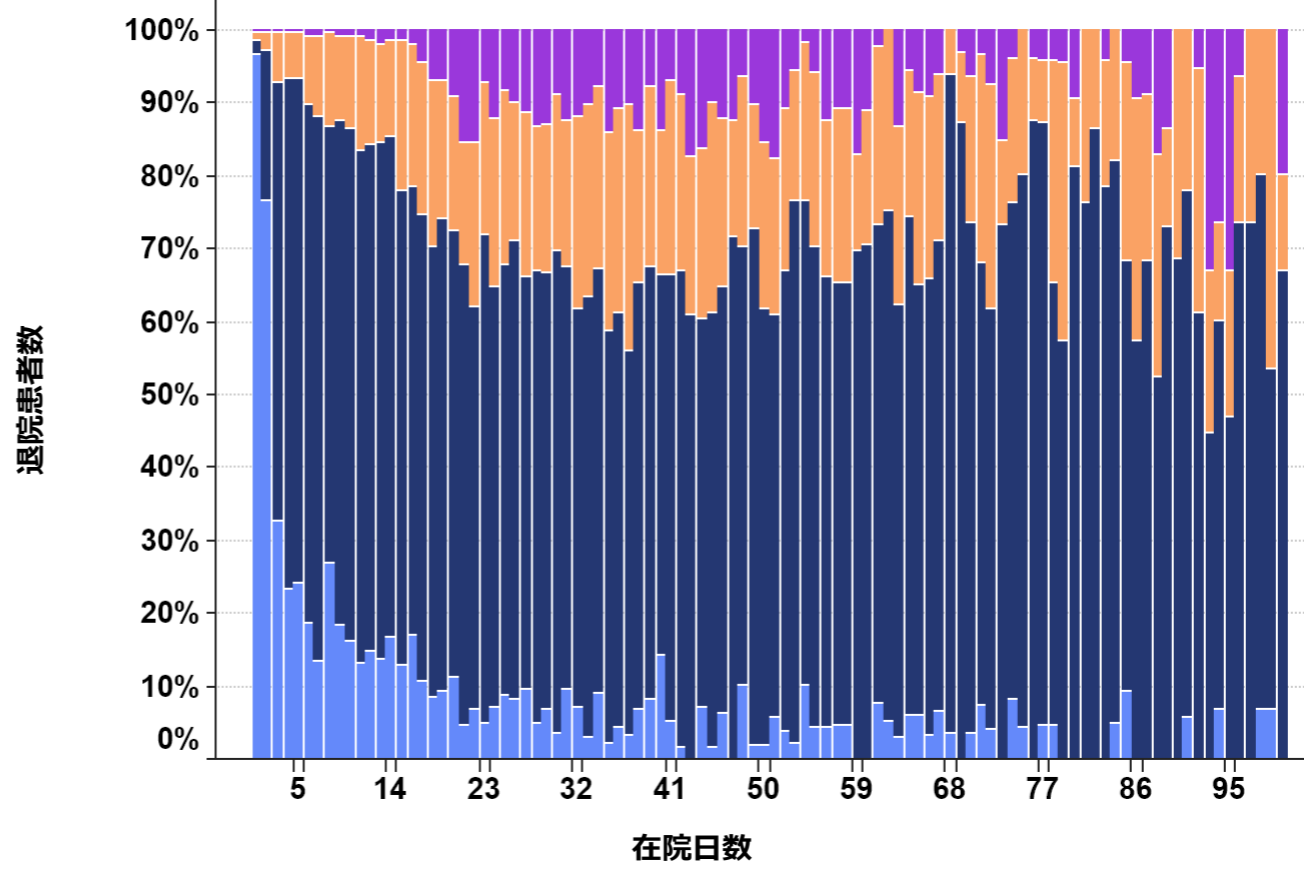
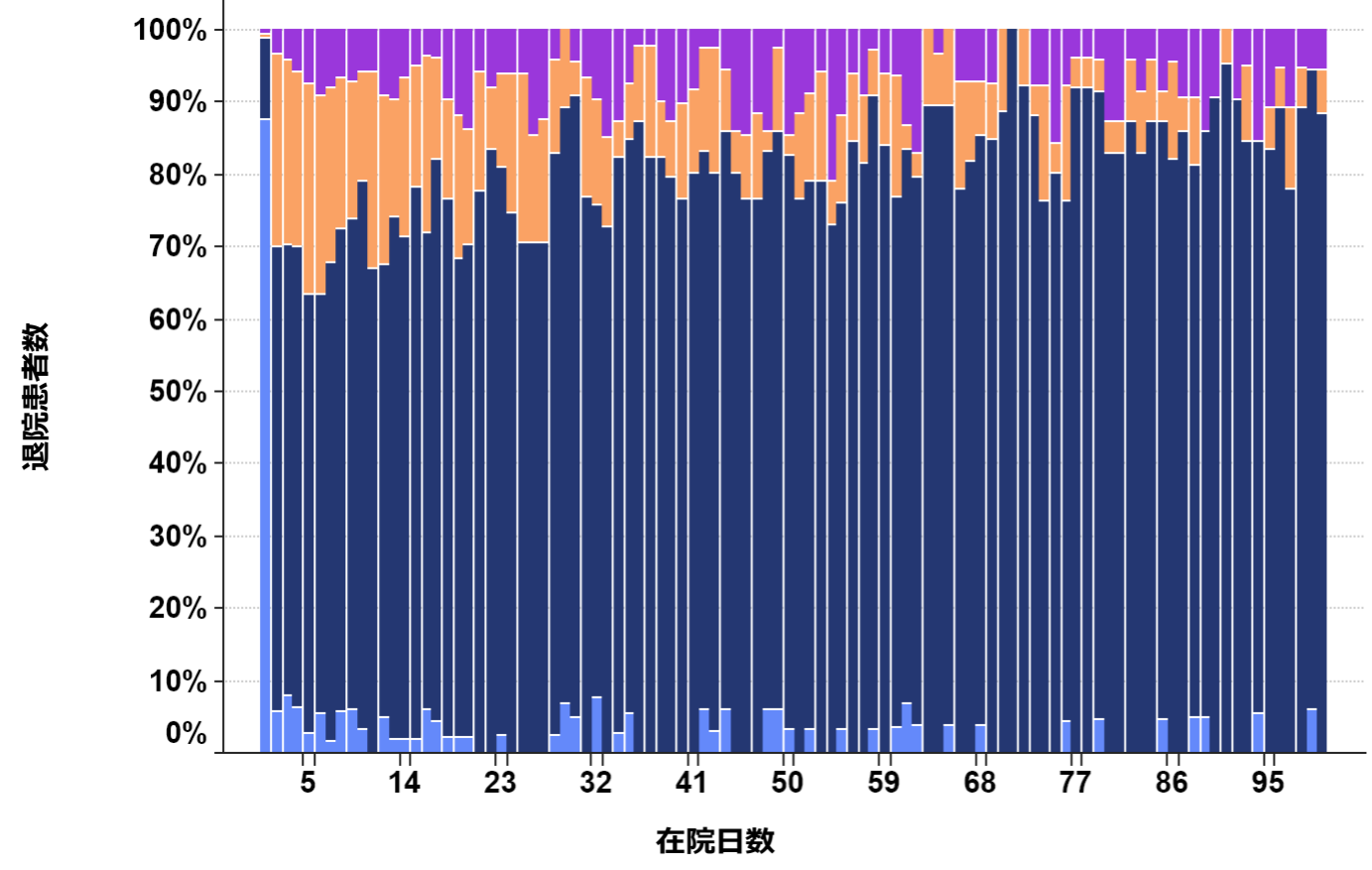
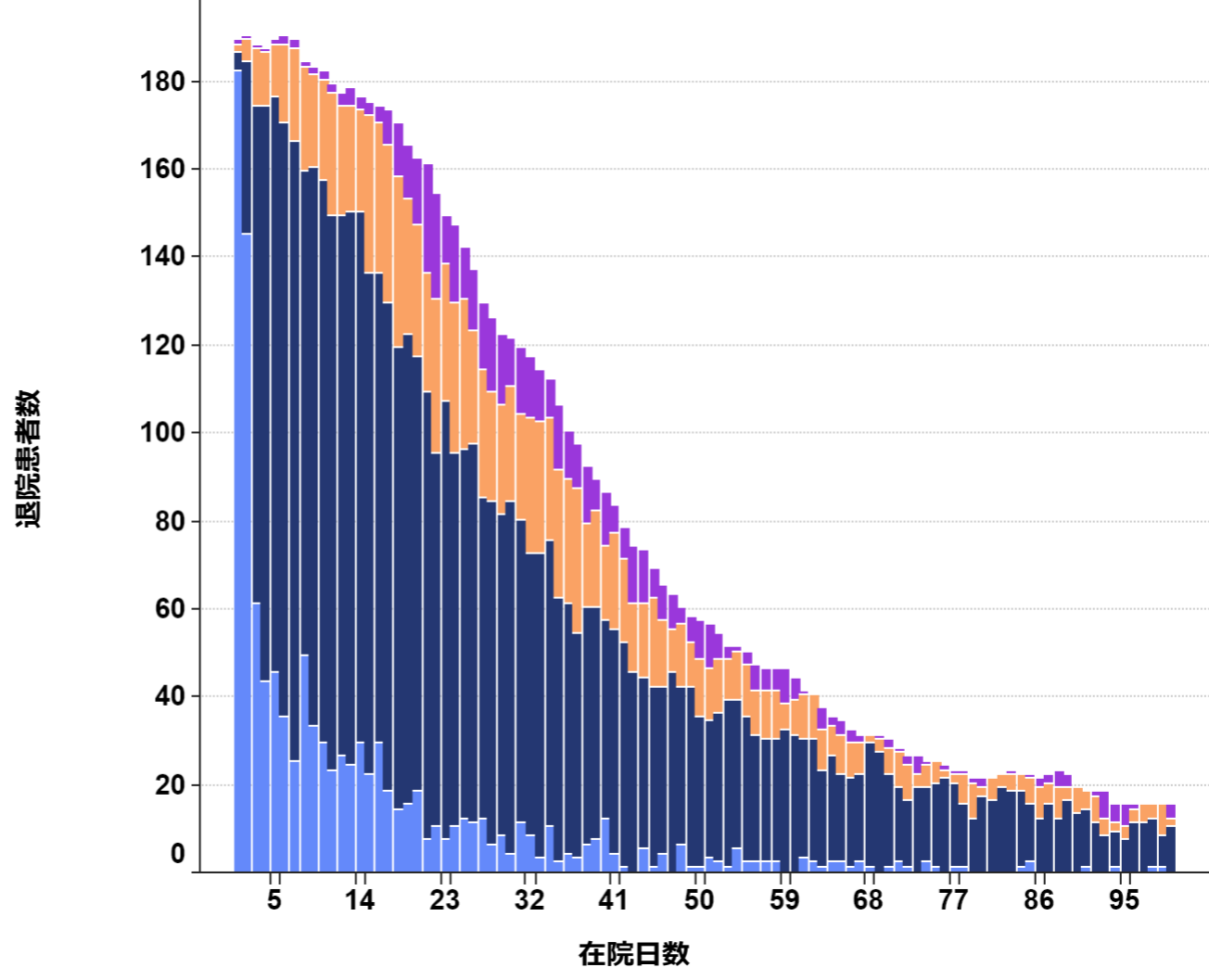
- 区分\_薬剤無\_点
- P1
  - P2
  - P3
  - P4

# 脳血管障害① 010020:クモ膜下出血、破裂脳動脈瘤

手術なし

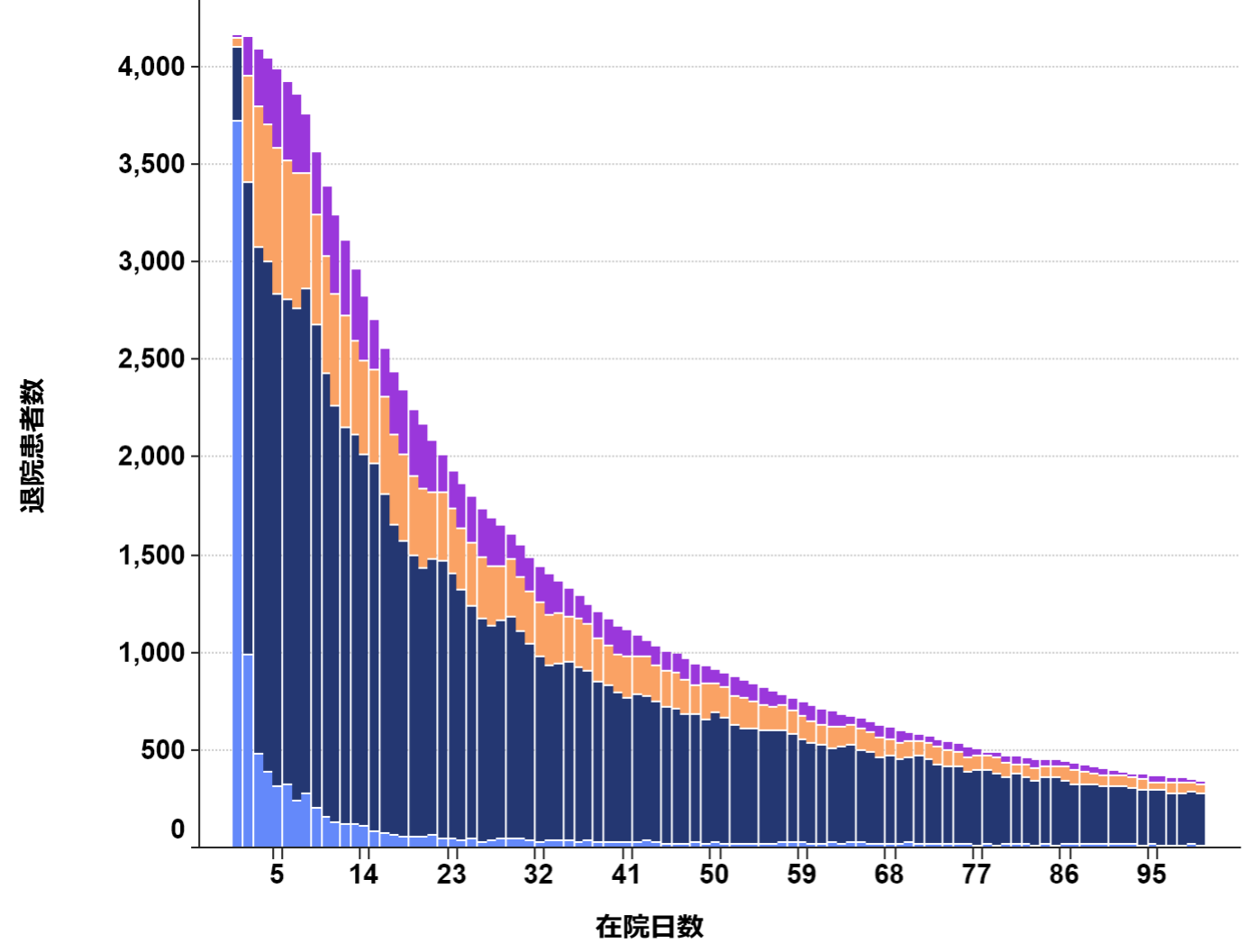


手術あり

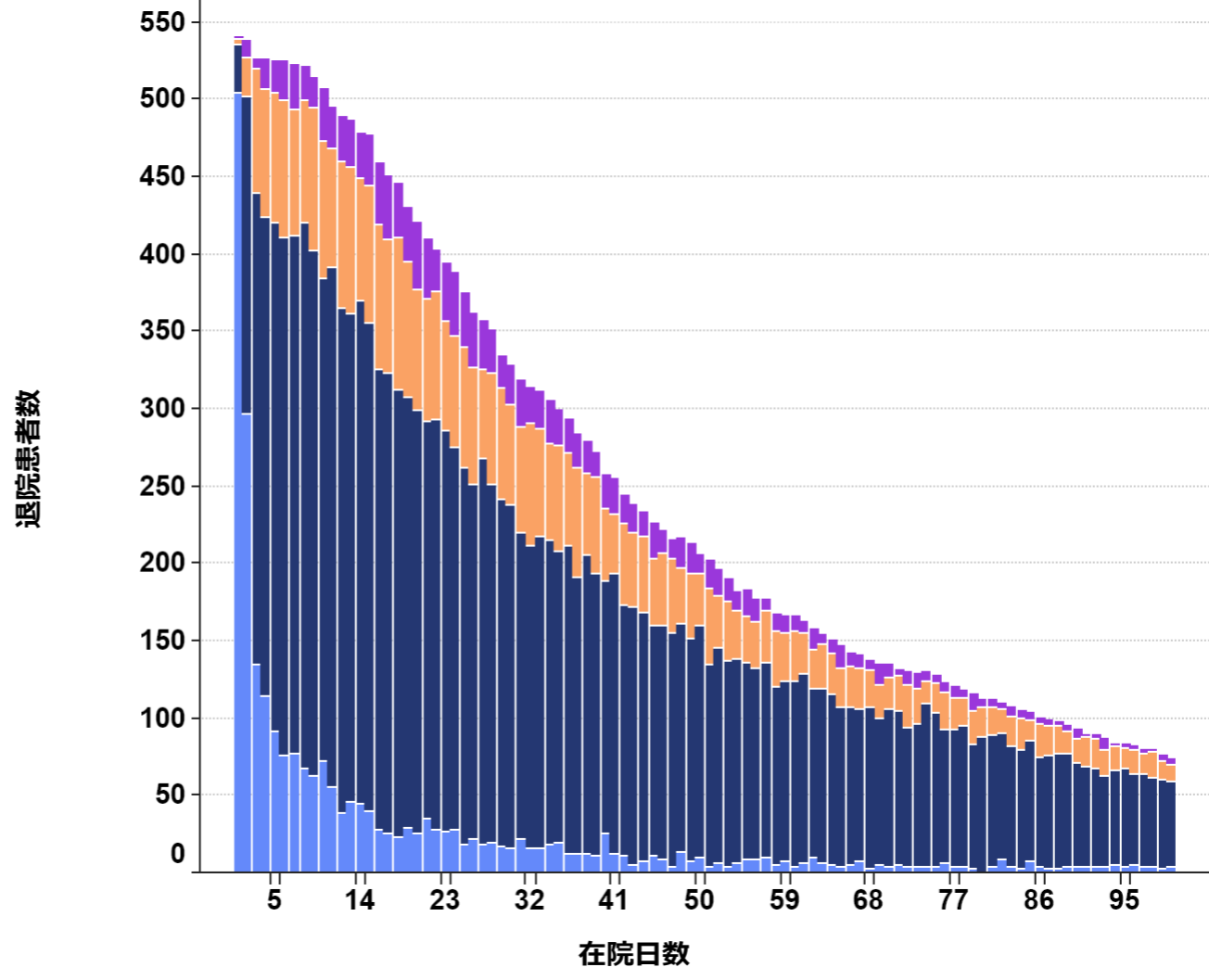


# 脳血管障害② 010060:脳梗塞

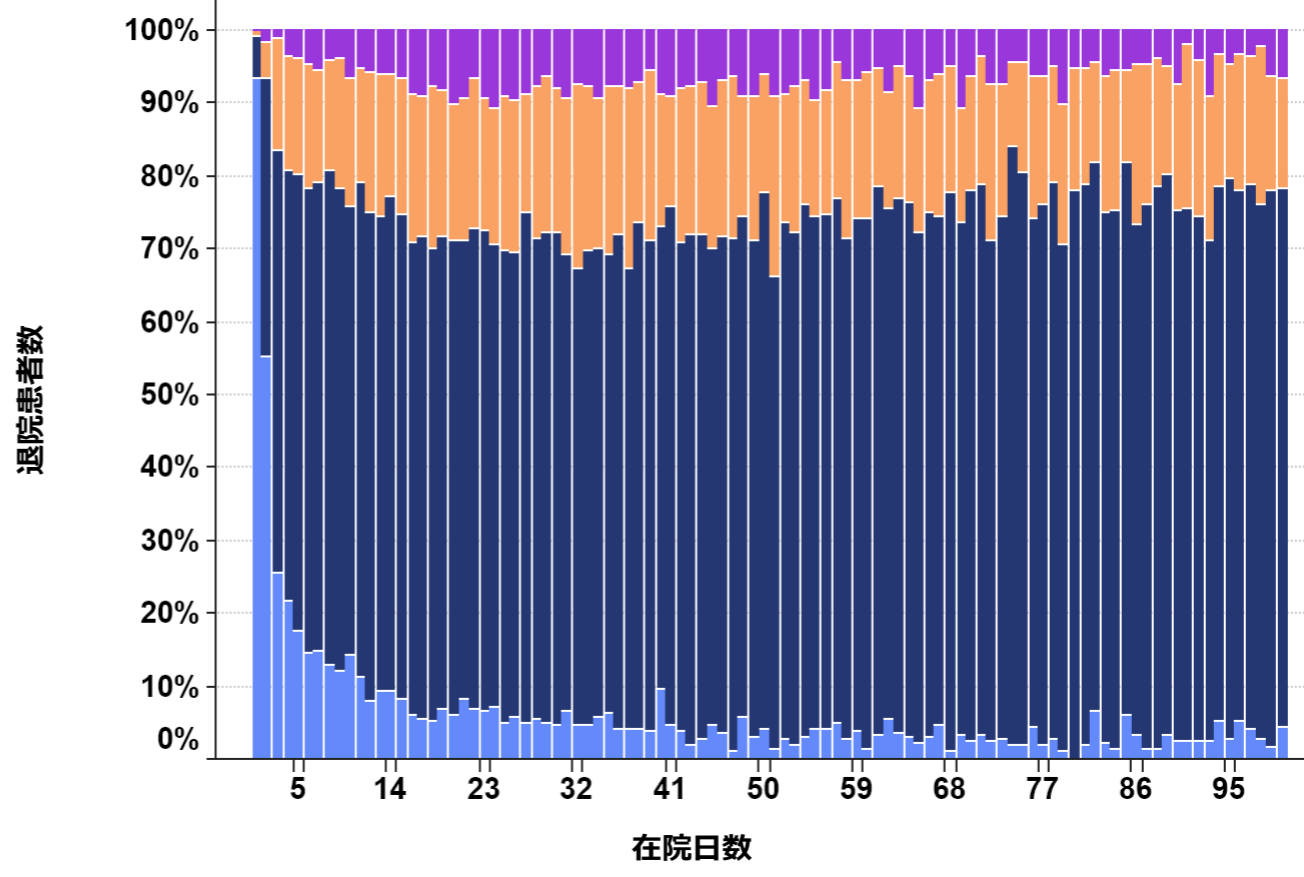
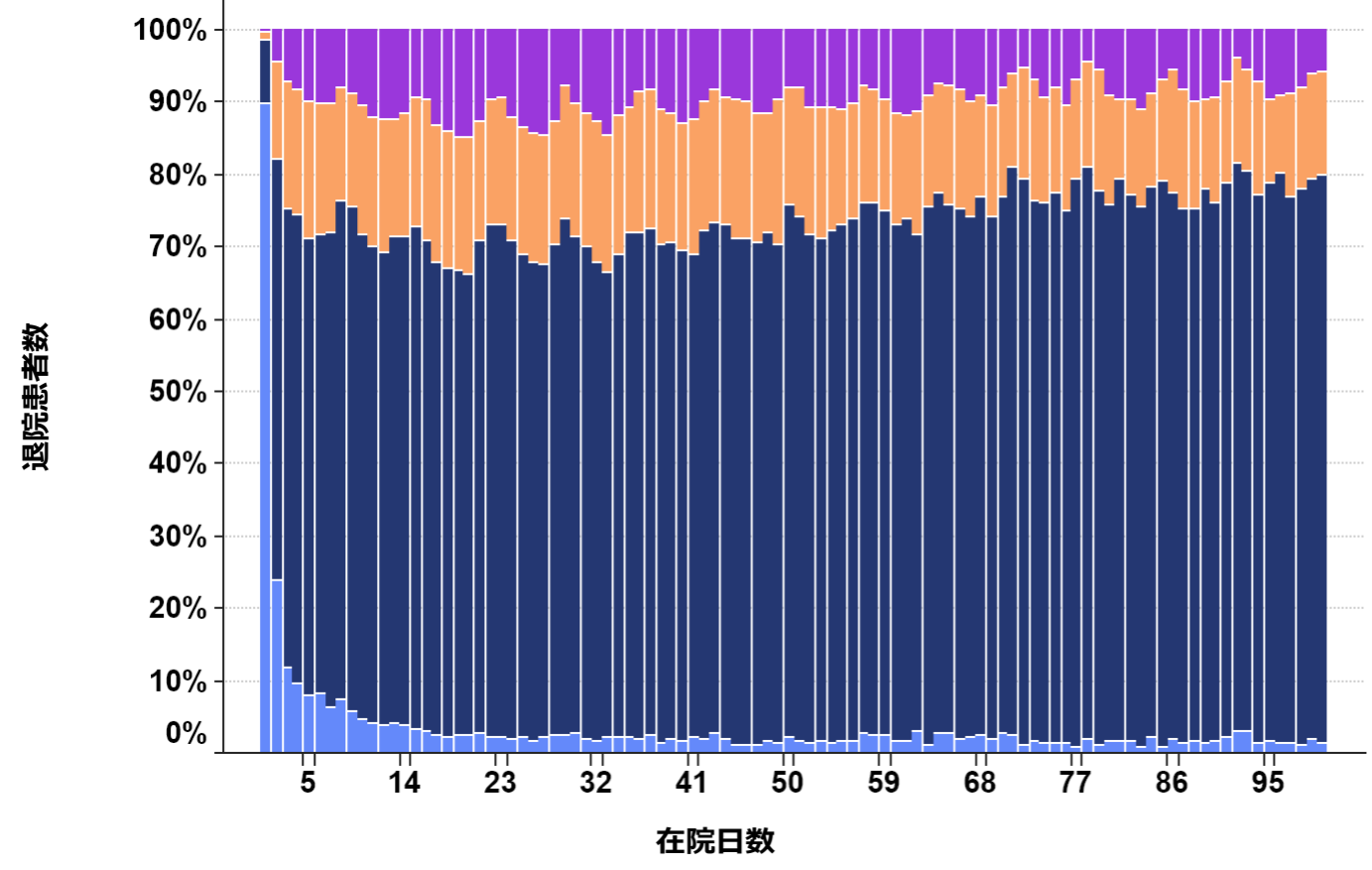
手術なし



手術あり



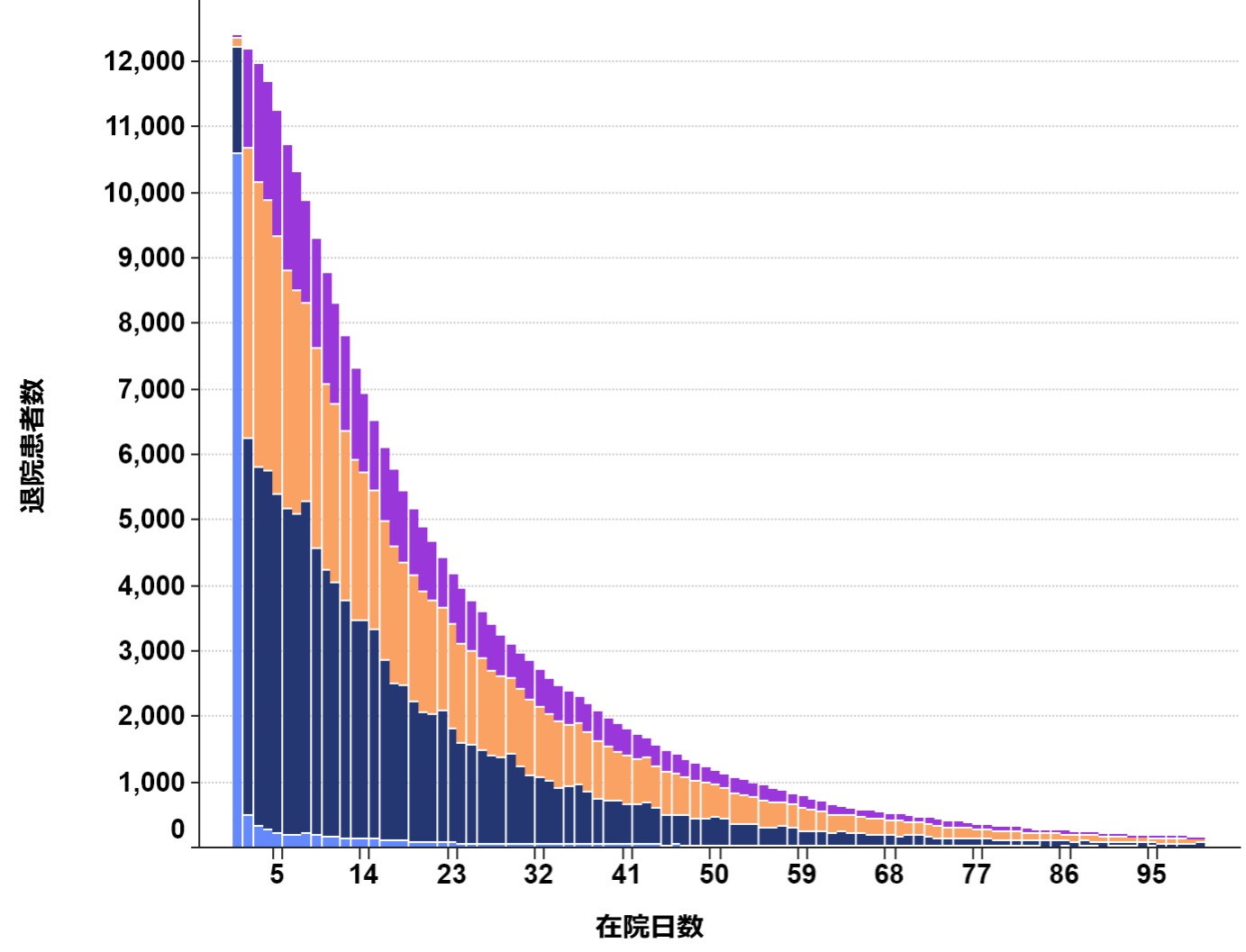
- 区分\_薬剤無\_点
- P1
  - P2
  - P3
  - P4



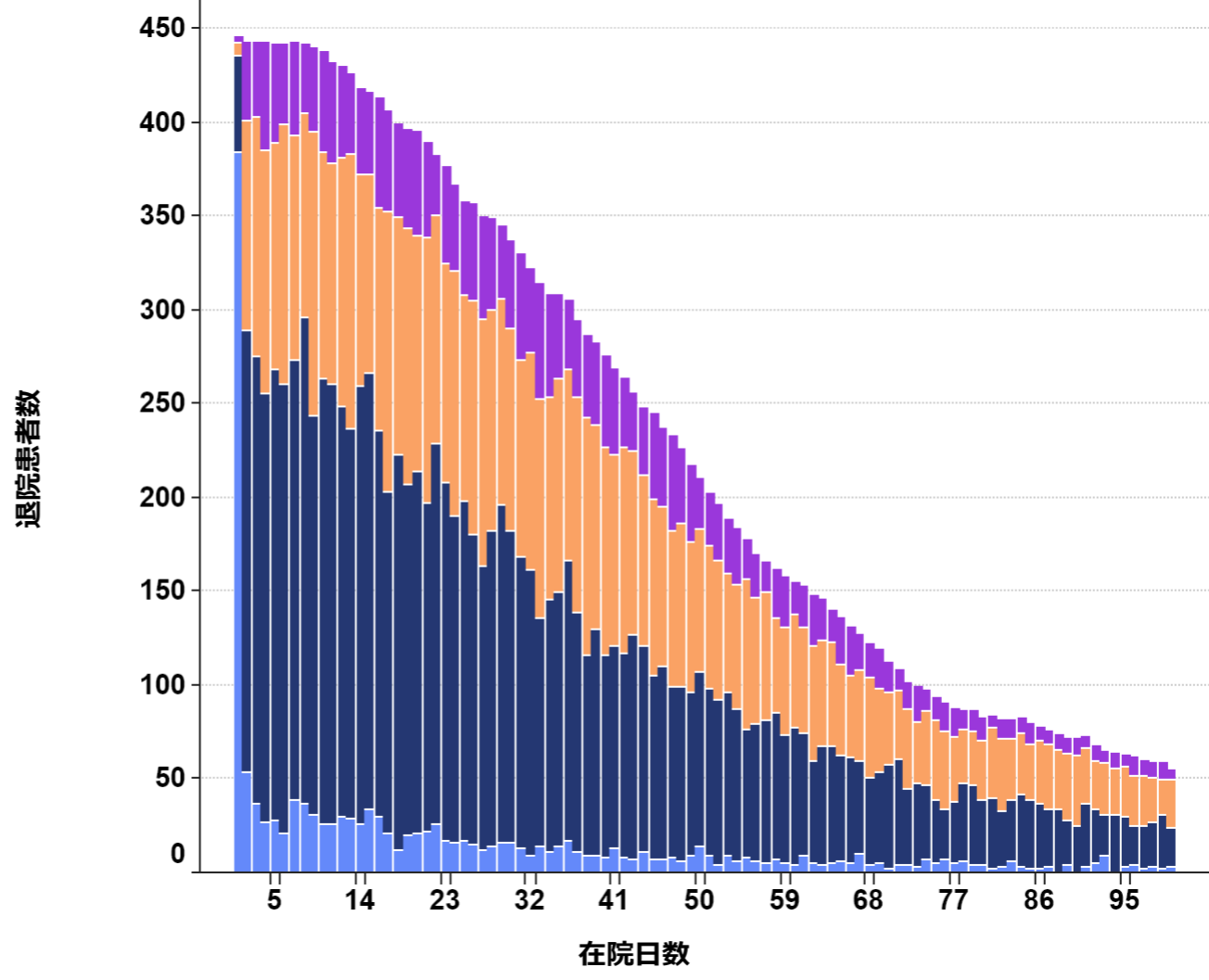
- 区分\_薬剤無\_点
- P1
  - P2
  - P3
  - P4

# 肺炎 (040080:肺炎等、040081:誤嚥性肺炎)

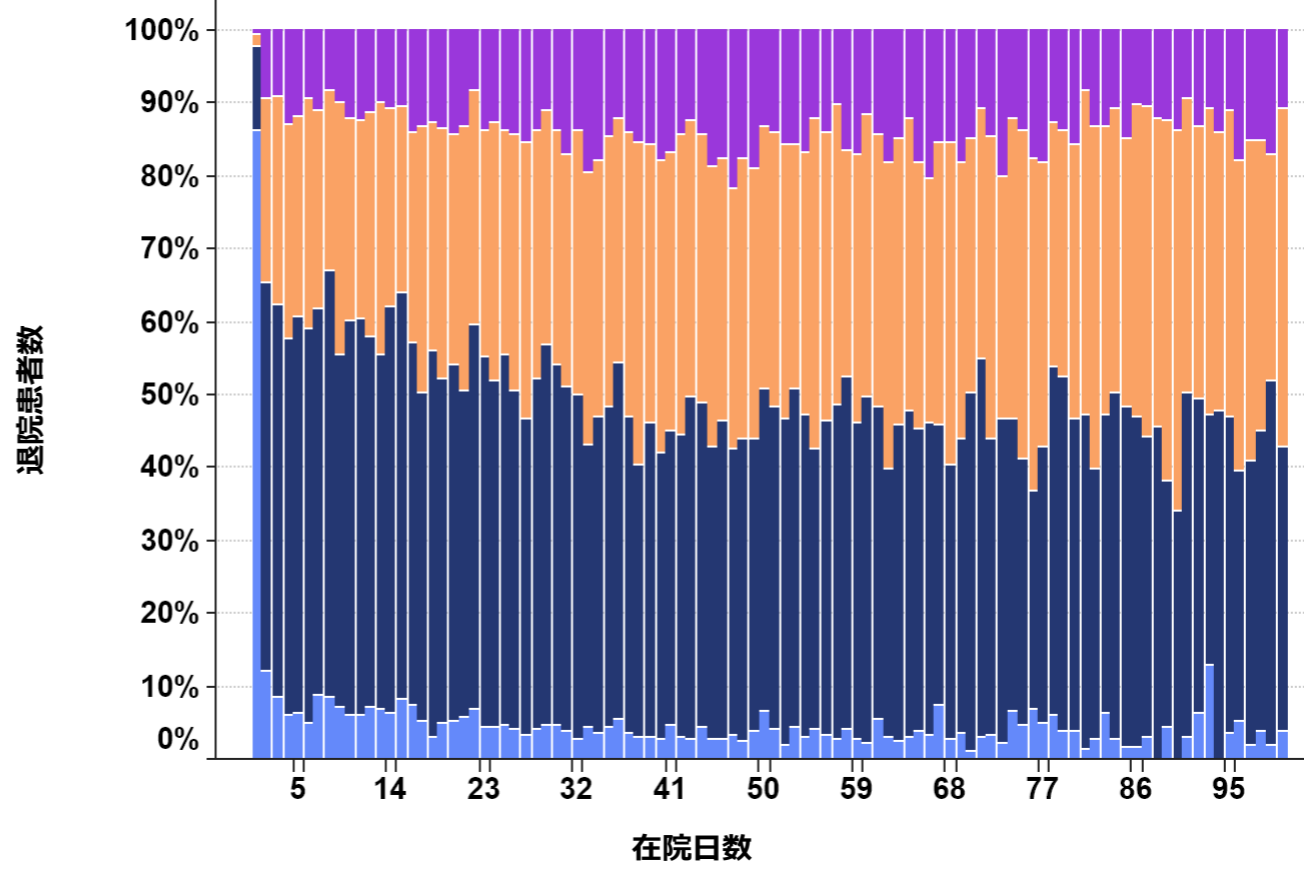
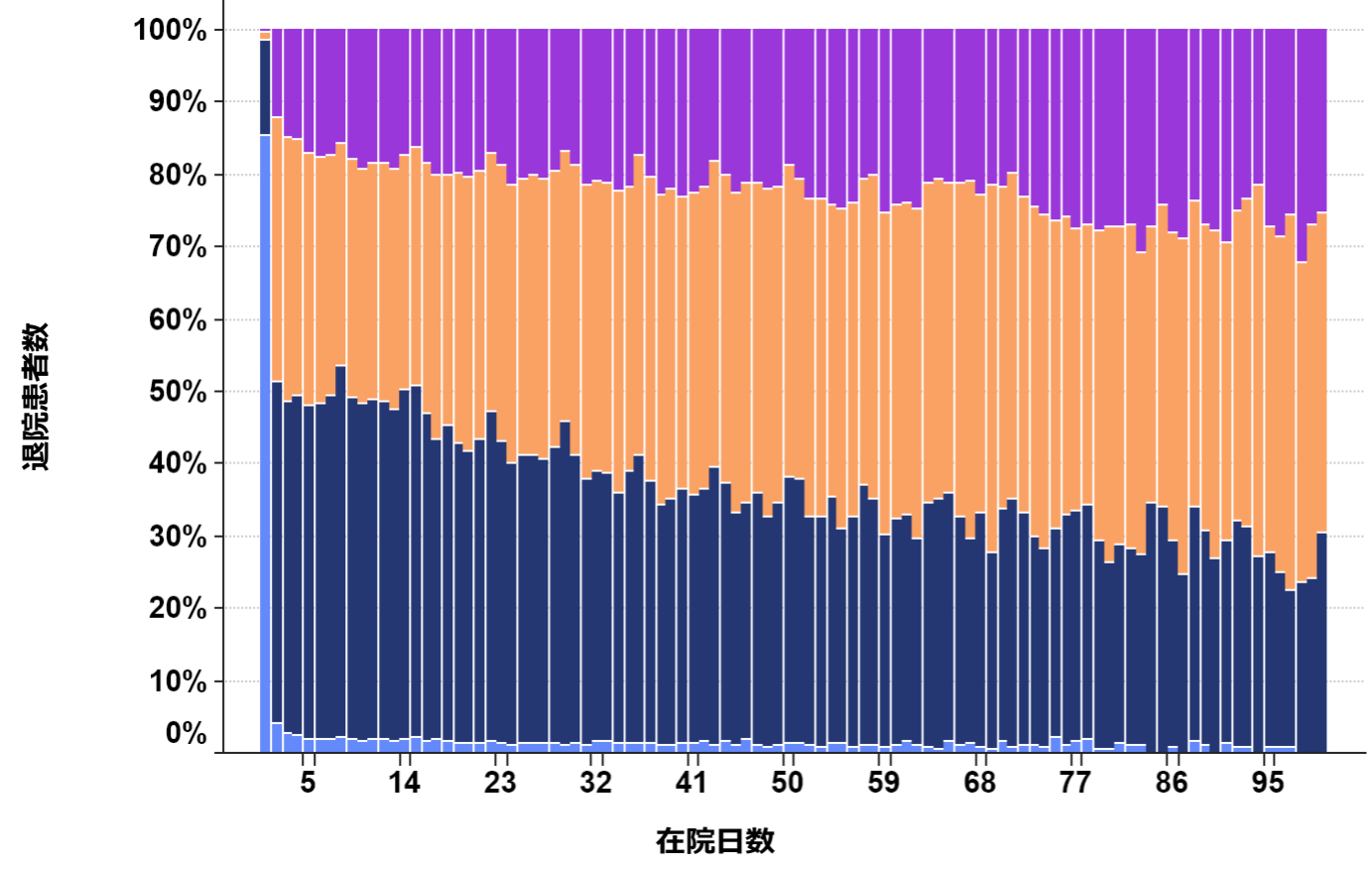
手術なし



手術あり



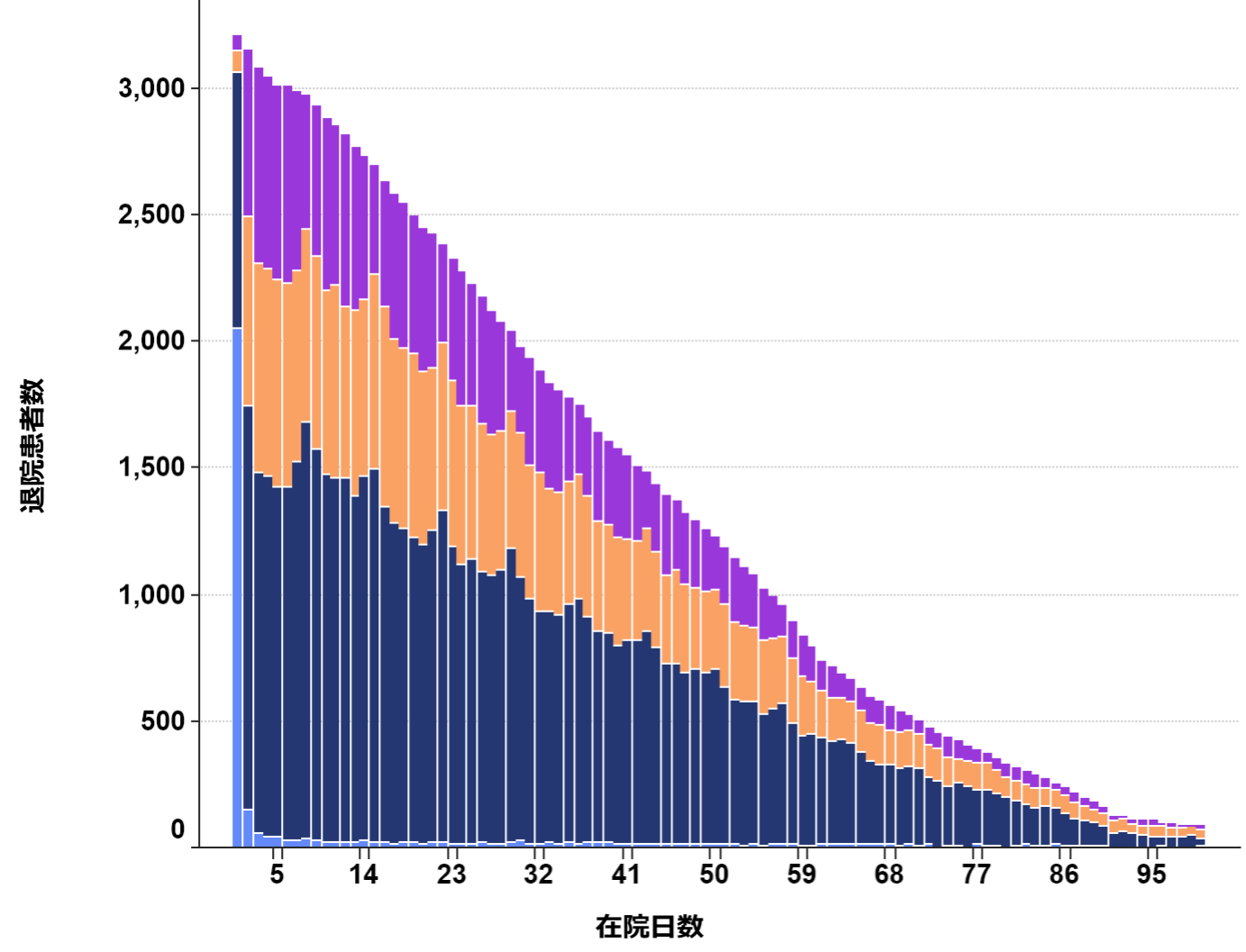
- 区分\_薬剤無\_点
- P1
  - P2
  - P3
  - P4



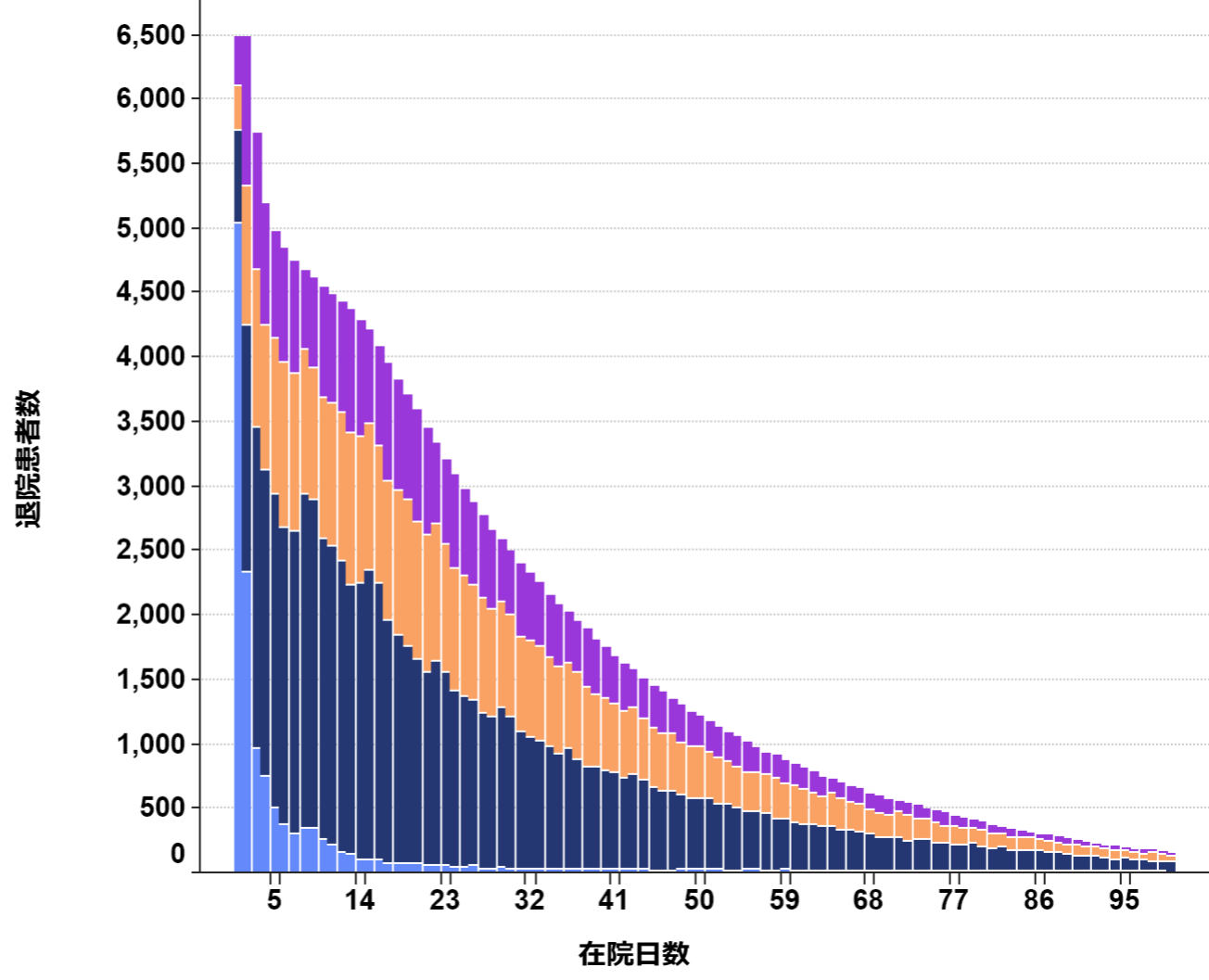
- 区分\_薬剤無\_点
- P1
  - P2
  - P3
  - P4

# 骨折 (160690・160700・160720・160740・160760・160800・160835・160850)

手術なし

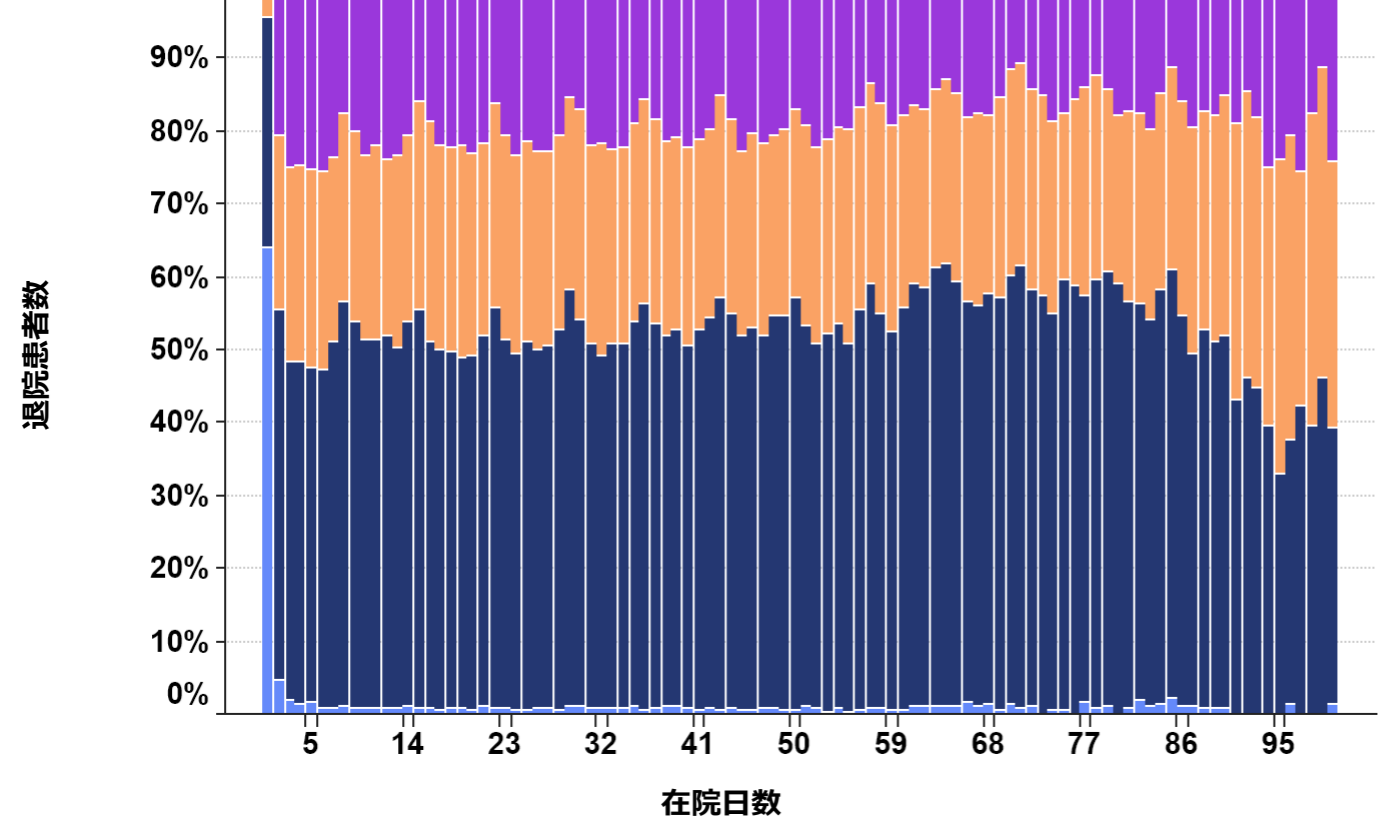


手術あり

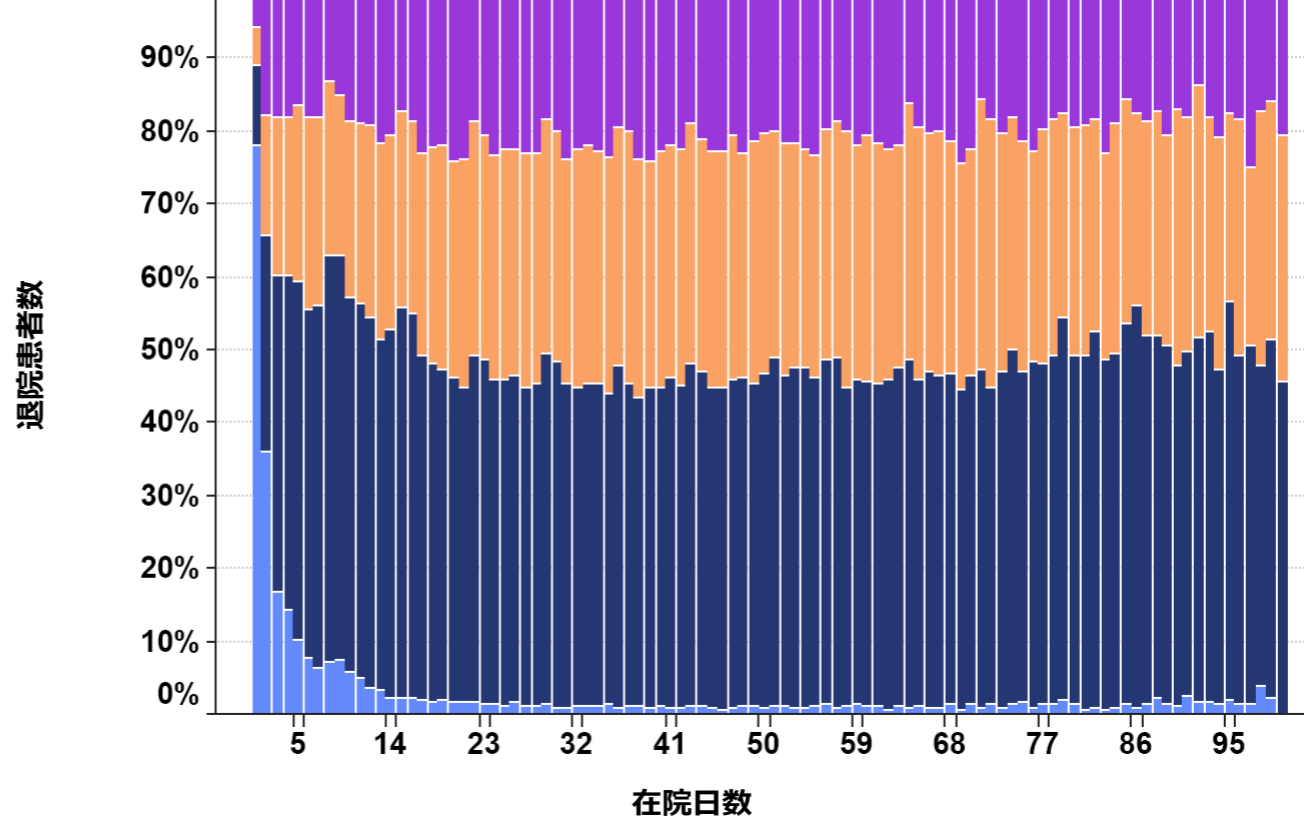


- 区分\_薬剤無\_点
- P1
  - P2
  - P3
  - P4

手術なし



手術あり



- 区分\_薬剤無\_点
- P1
  - P2
  - P3
  - P4