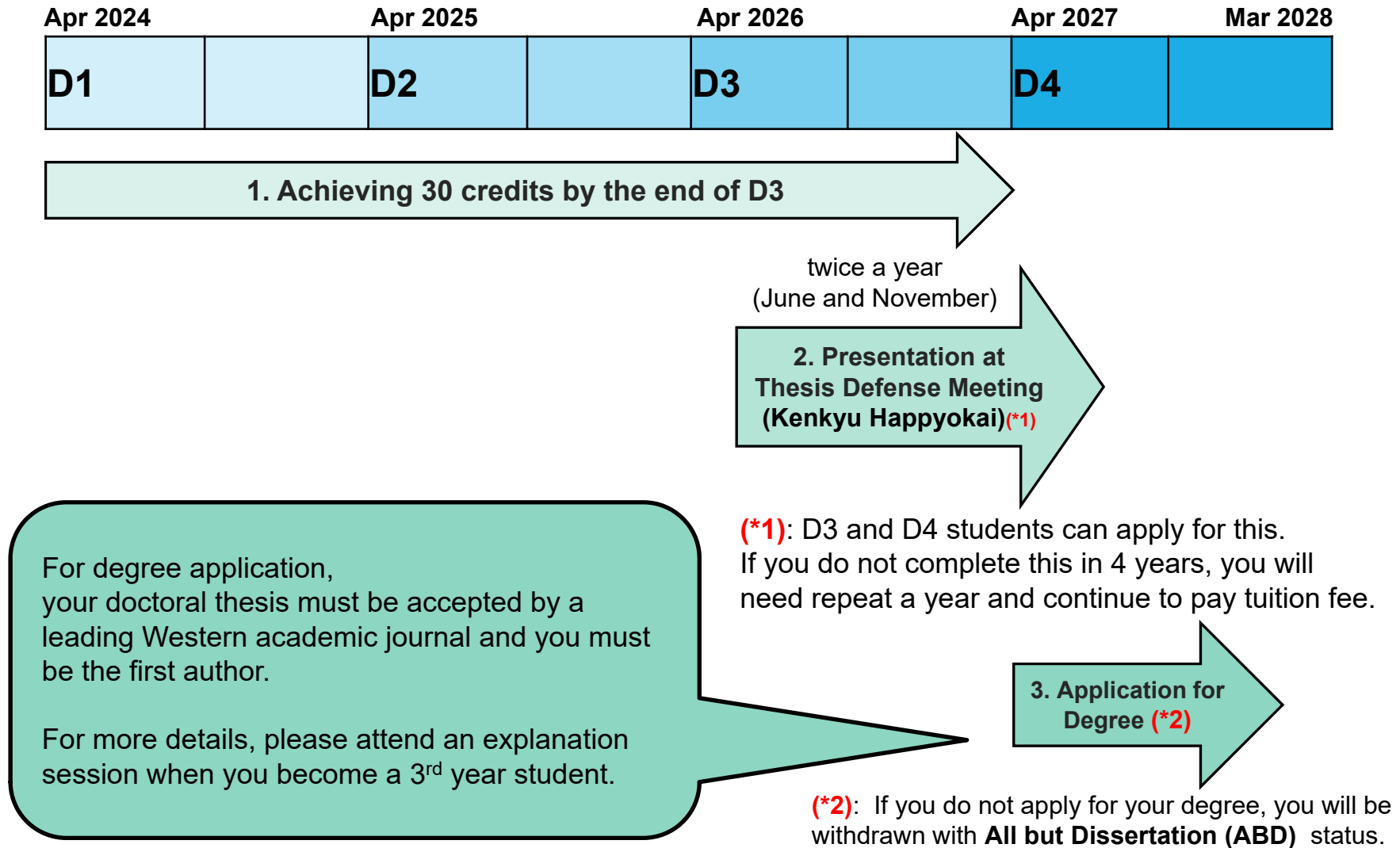




**Nagoya University
Graduate School of Medicine
Curriculum for PhD Students**

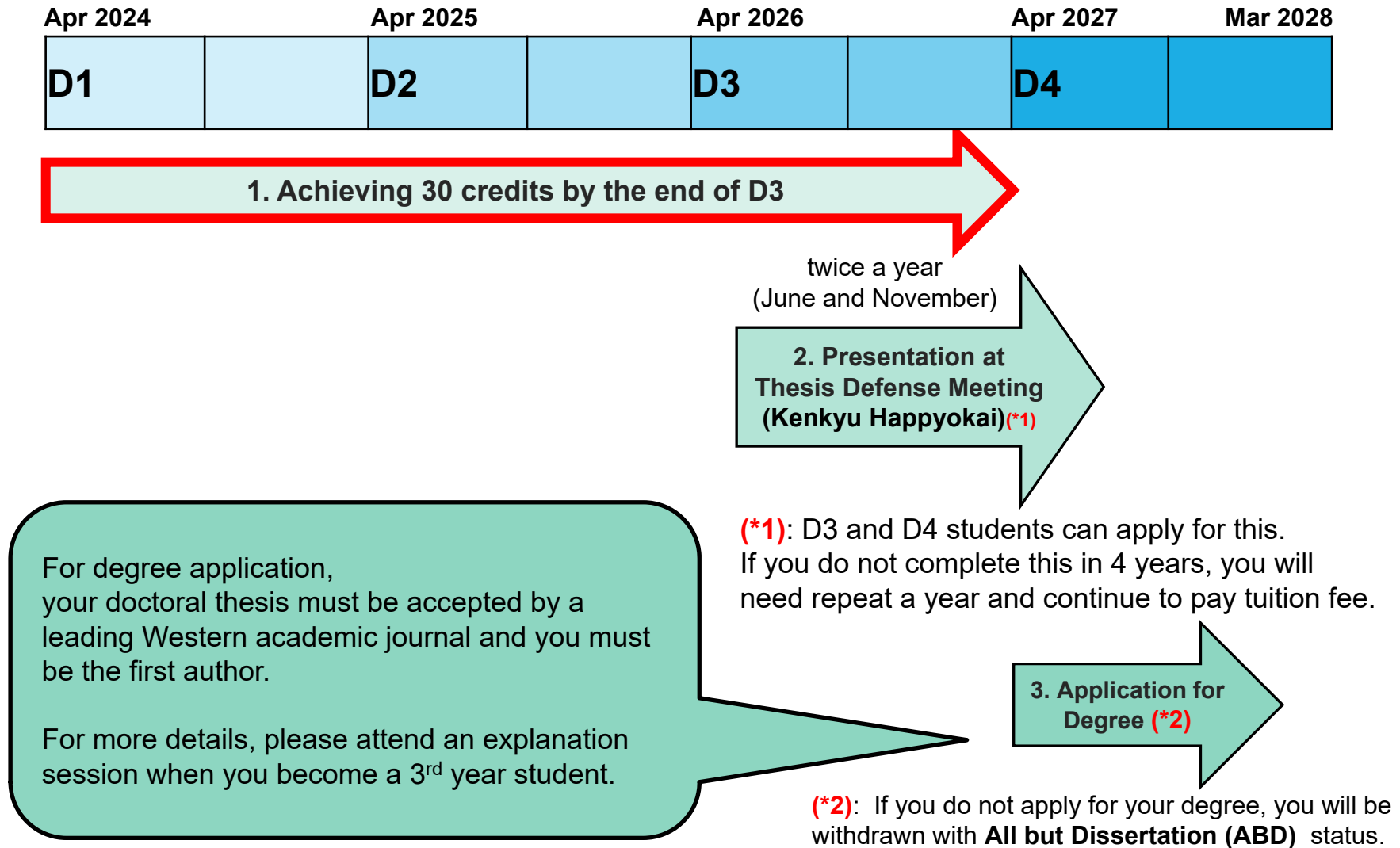


A whole schedule of PhD program



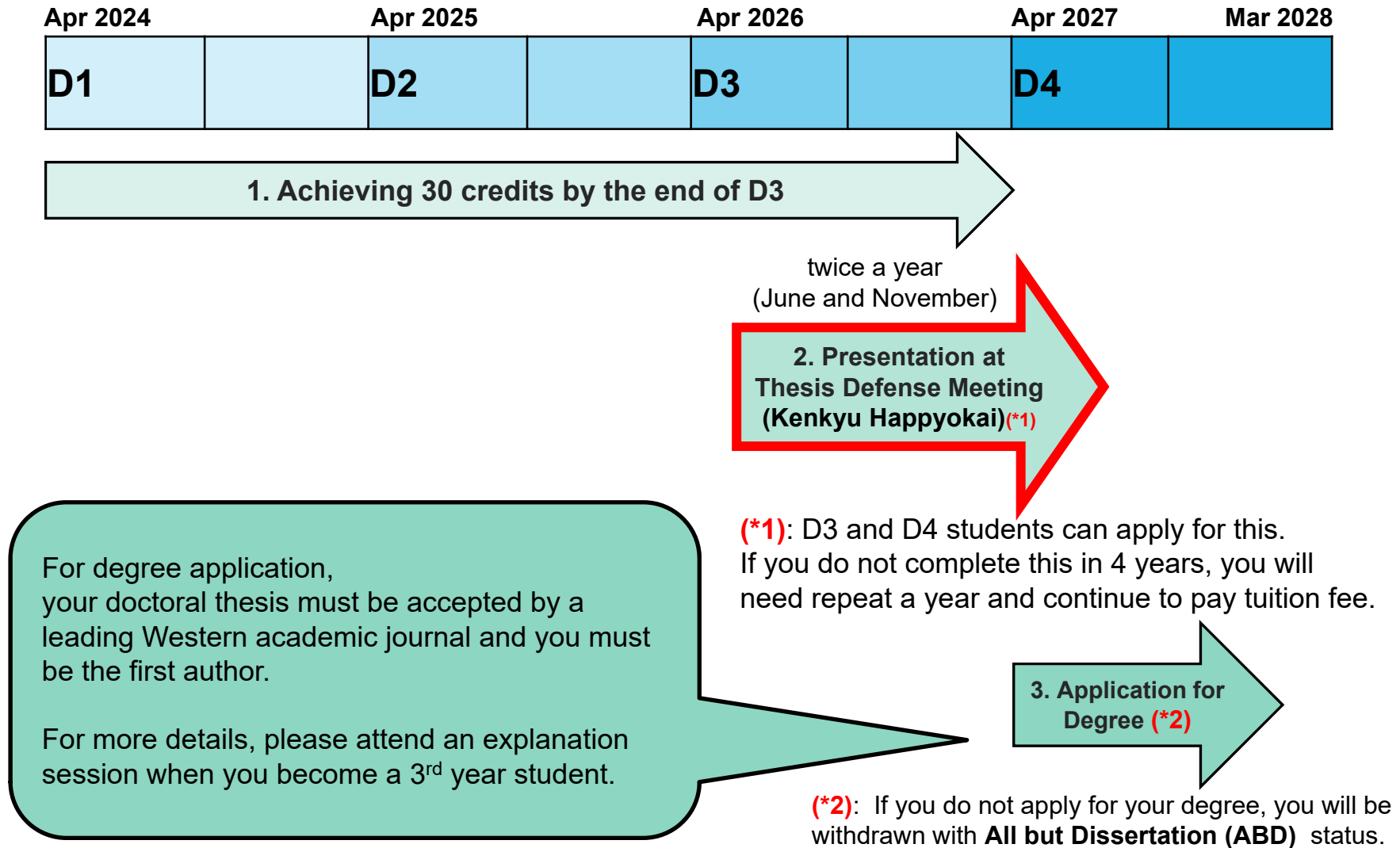
If you take a leave of absence, your schedule will be pushed back.

A whole schedule of PhD program



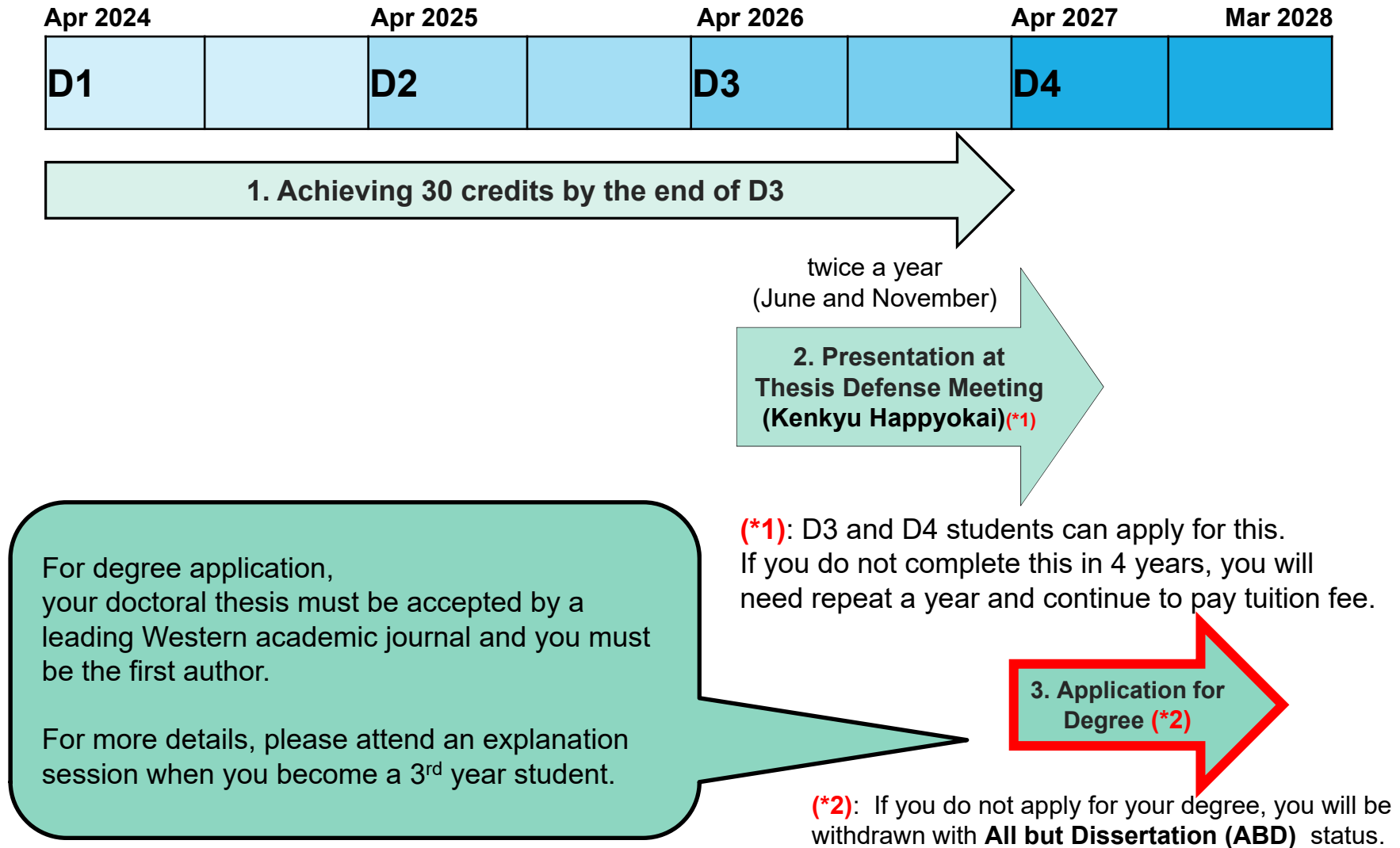
If you take a leave of absence, your schedule will be pushed back.

A whole schedule of PhD program



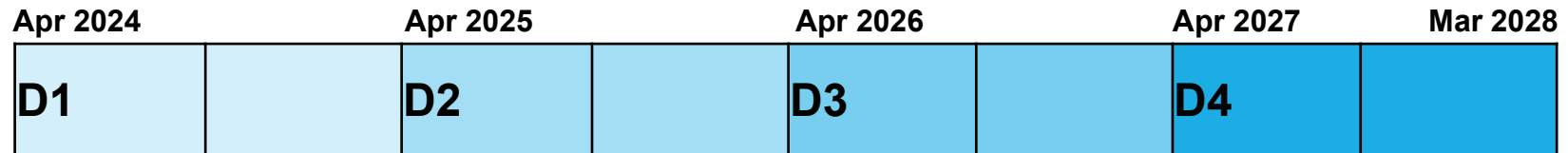
If you take a leave of absence, your schedule will be pushed back.

A whole schedule of PhD program



If you take a leave of absence, your schedule will be pushed back.

A whole schedule of PhD program



1. Achieving 30 credits by the end of D3

twice a year
(June and November)

2. Presentation at
Thesis Defense Meeting
(Kenkyu Happyokai)(*1)

(*1): D3 and D4 students can apply for this.
If you do not complete this in 4 years, you will
need repeat a year and continue to pay tuition fee.

3. Application for
Degree (*2)

(*2): If you do not apply for your degree, you will be
withdrawn with **All but Dissertation (ABD)** status.

For degree application,
your doctoral thesis must be accepted by a
leading Western academic journal and you must
be the first author.

For more details, please attend an explanation
session when you become a 3rd year student.

If you take a leave of absence, your schedule will be pushed back.

Achieving 30 credits

Subjects	Credits
Core Subjects (主科目) *You must take Distinctive educational programs (called "TOKUPRO")(特徴あるプログラム)	16
Seminar(主科目セミナー)	10
Experimental Research(主科目実験研究)	6
Minor Subjects (副科目)	10
Basic Subjects (基礎科目)	4
Special Lectures (called "TOKURON")(基盤医学特論)	2
Fundamental Medical Practice (called "Basic Training")(基盤医学実習)	2 (0.5*4)
Research Ethics(倫理教育) APRIN e-learning course Epigium e-learning course	
total	30

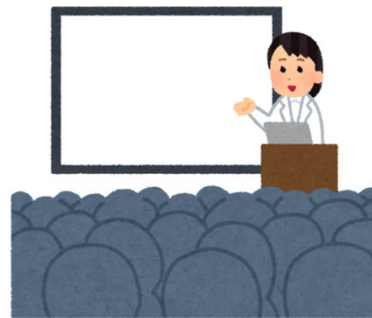
Achieving 30 credits

Subjects	Credits
Core Subjects (主科目) *You must take Distinctive educational programs (called "TOKUPRO")(特徴あるプログラム)	16
Seminar(主科目セミナー)	10
Experimental Research(主科目実験研究)	6
Minor Subjects (副科目)	10
Basic Subjects (基礎科目)	4
Special Lectures (called "TOKURON")(基盤医学特論)	2
Fundamental Medical Practice (called "Basic Training")(基盤医学実習)	2 (0.5*4)
Research Ethics(倫理教育) APRIN e-learning course Epigium e-learning course	
total	30

Core Subjects (主科目)

4-year research activities at your laboratory

- e.g. experiments, participation in conferences, submission of research reports, etc.



To get credits of Core Subjects,

you **must take the distinctive educational programs**
(called "TOKUPRO" (特徴あるプログラム)).

Distinctive Educational Programs (called “TOKUPRO” (特徴あるプログラム))

Take at least 20 Lectures across 4 courses or more.

Courses of Distinctive Educational Programs

1. CIBoG Industry-Government-Academia Cooperation Program
2. Integrated Program for Medical and Pharmaceutical Sciences
3. Neuroscience Course
4. Next Generation Cancer Medical Course
5. Cancer Prevention Promotion Course
6. Advanced Cancer Treatment Development Research Course
7. On the job Training Program
8. Translational Research Course
9. Medical English
10. Human Informatic AI Medicine
11. CIBoG Health Care Administration Program
12. CIBoG/AI-MAILs Omics Analysis Program
13. CIBoG/AI-MAILs Life Data Science Program
14. CIBoG/AI-MAILs Medical AI Program
15. CIBoG/AI-MAILs Basic Life Sciences Program

Details are available at



https://www.med.nagoya-u.ac.jp/medical_J/graduate/classes/tokupro/

TOKUPURO Attendance Card

Please bring your TOKUPURO card at each lecture.

Fill in the date of the lecture and ask the lecturer to put his or her seal on your card.

***If you take zoom online lectures, write the date of lecture and put a circle "Online" on your card.**

When you complete 20 lectures, please submit the TOKUPURO Card by the end of the 3rd year.

特徴あるプログラム 履修カード

履修上の注意

- 受講の際には本カードを持参し、終了時に年月日を記入し、実施講座の長の印（1回につき1押印）を受領すること。年月日の記入及び実施講座の長の印がない場合には、無効とする。一定時間を経過後の入室は、受講確認の押印を認めない。講義によっては入室を認めない場合がある。
- 原則3年間で4コース以上にわたり合計20回以上受講しなければ主科目の単位が修得できない。
- 特徴あるプログラムは特論としても開講されるが、どちらか一方しか出席の押印はされない。
- 各プログラム、年間5コマ以上から15コマを目途として実施予定。

実施日時、実施場所、日程変更等の情報は、HPにより案内をする（随時更新）。

- オンライン講義を受講した場合、日付を記入しOnlineに○印をすること。

Date: YYYY MM DD

年 月 日

①・ Online



名古屋大学医学部HP
>大学院教育
>授業案内
「特徴あるプログラム」

10. CIBoG/AI-MAILs オミクス解析学プログラム
CIBoG/AI-MAILs Omics Analysis Program

年 月 日	年 月 日	年 月 日
①・ Online	①・ Online	①・ Online
年 月 日	年 月 日	年 月 日
①・ Online	①・ Online	①・ Online
年 月 日	年 月 日	年 月 日
①・ Online	①・ Online	①・ Online
年 月 日	年 月 日	年 月 日
①・ Online	①・ Online	①・ Online

専門分野 Division

学生番号 Student ID 氏 名 Name

*** TOKUPURO Card will be handed out at the Student Affairs Office.**

Achieving 30 credits

Subjects	Credits
Core Subjects (主科目) *You must take Distinctive educational programs (called "TOKUPRO")(特徴あるプログラム)	16
Seminar(主科目セミナー)	10
Experimental Research(主科目実験研究)	6
Minor Subjects (副科目)	10
Basic Subjects (基礎科目)	4
Special Lectures (called "TOKURON")(基盤医学特論)	2
Fundamental Medical Practice (called "Basic Training")(基盤医学実習)	2 (0.5*4)
Research Ethics(倫理教育) APRIN e-learning course Epigium e-learning course	
total	30

Minor Subjects (副科目)

Taking research guidance from your Sub supervisor

*To select Sub supervisor, please consult with your Supervisor

Registration conditions for minor subjects

		Core subjects		
		Basic Medicine	Clinical Medicine	Clinical Pharmacology
Minor subjects	Basic Medicine	○	○	○
	Clinical Medicine	○	×	○
	Clinical Pharmacology	○	○	×

When you choose your sub supervisor and get approval, please submit Study Plan by April 18.

* Faculty members are listed in the Syllabus 2024

Study Plan

(for all PhD students)

Study Plan (Academic Year 2024)
Nagoya University Graduate School of Medicine

【Enrollment date : April 1st or October 1st】

Division	Academic advisor	Name	Tel. (Ext. No.)
Labo's name	Supervisor's name	your name	tel.

Research theme	Research Theme
----------------	-----------------------

If you are a student of a clinical medicine, enter the name of the divisions in the basic medicine and clinical pharmacology

	Subject	No. of credits	Instructor	Stamp
Core subjects	Seminar	10		
	Experimental research course	6		
Minor subjects	Seminar	10		
Basic subjects	Special Lectures (TOKURON)	2	-----	
	Basic Science Practice (Basic training: at least 4 courses)	At least 2	-----	
Total				

Fill out this form and submit it to the Student Affairs Office. What you are required to fill out is the name of the subjects from the supervisor to decide your minor subjects. Please refer to the relevant box from each professor to the head of each laboratory.
*Please make sure that you make a copy of this form before submitting it.

Research Guidance Plan

(only for Clinical Medicine students)

Research Guidance Plan in Basic Medicine and Clinical Pharmacology for
Students of the Clinical Medicine Division
(Academic Year 2024)

Division	Instructor	Name

[A] Divisions of Basic Medicine and Clinical Pharmacology at Nagoya University Graduate School of Medicine

Division	Academic advisor

Research guidance period	From	to

Research theme	

Fill out this form if you are a student of a clinical medicine. This is required to submit to the Student Affairs Office with the other form by the deadline. It's also necessary to make a copy of this form before submitting it.

Please get the signatures and seals of your supervisor and sub-supervisor.

*** These 2 forms are included in the Syllabus 2024**

Achieving 30 credits

Subjects	Credits
Core Subjects (主科目) *You must take Distinctive educational programs (called "TOKUPRO")(特徴あるプログラム)	16
Seminar(主科目セミナー)	10
Experimental Research(主科目実験研究)	6
Minor Subjects (副科目)	10
Basic Subjects (基礎科目)	4
Special Lectures (called "TOKURON")(基盤医学特論)	2
Fundamental Medical Practice (called "Basic Training")(基盤医学実習)	2 (0.5*4)
Research Ethics(倫理教育) APRIN e-learning course Epigium e-learning course	
total	30

Basic Subjects: Special Lectures (called “TOKURON”)

Attend at least **15 TOKURON lectures** including at least **1 special lecture** called “**Premium Lecture**” within 2 years.

Details are available at



https://www.med.nagoya-u.ac.jp/medical_J/graduate/class/tokuron/

TOKURON Attendance Card

- ◆ Please bring your TOKURON card at each lecture.
 - ◆ Fill in the date of the lecture by yourself and ask the lecturer to put his or her seal on your card.
- *If you take zoom online lectures, write the date of lecture and write “Taken through Zoom” on your card.
- ◆ When you complete 15 lectures, please submit the TOKURON Card by the end of the 2nd year.

<p>MC AY 2024</p> <p>Advanced Medicine</p> <p>(Tokuron)</p> <p>Attendance Card</p>	
<p style="text-align: center;">Division</p>	
Student Number	NAME

Attention for taking lectures

1. The information on the date, the time and the place for the lectures is posted on the website (Changes of them are frequently updated).
https://www.med.nagoya-u.ac.jp/medical_J/graduate/class/tokuron/

2. When you attend the lectures, make sure you bring this slip. At the end of the lectures, fill in the date of the day and have the chief of the lectures put his/her seal (one seal per one lecture). If you don't do that, your attendance will not be accepted. The seal will not be given when you are late for a certain time. Depending on the lectures, you may not be allowed to attend when you are late.

3. Credit certification (2 credits) is given to the students who attend the lectures more than 15 times. Make sure you attend the lectures more than 15 times and submit this slip to Postgraduate Section, Student Affairs Division.

y/ m/ d seal	y/ m/ d seal
y/ m/ d seal	y/ m/ d seal
y/ m/ d seal	y/ m/ d seal
y/ m/ d seal	y/ m/ d seal
y/ m/ d seal	y/ m/ d seal

* TOKURON Card will be handed out at the Student Affairs Office.

Achieving 30 credits

Subjects	Credits
Core Subjects (主科目) *You must take Distinctive educational programs (called "TOKUPRO")(特徴あるプログラム)	16
Seminar(主科目セミナー)	10
Experimental Research(主科目実験研究)	6
Minor Subjects (副科目)	10
Basic Subjects (基礎科目)	4
Special Lectures (called "TOKURON")(基盤医学特論)	2
Fundamental Medical Practice (called "Basic Training") (基盤医学実習)	2 (0.5*4)
Research Ethics(倫理教育) APRIN e-learning course Epigium e-learning course	
total	30

Basic Subjects: Fundamental Medical Practice (called “Basic Training”)

What is Basic Training

- ◆ Practical training at laboratories
- ◆ Around 70 courses are offered in 1 year.
- ◆ Attend at least 4 courses (earning 0.5 credit per course).
 - *No credits are awarded for repeating the same course
- ◆ **Needs pre-application**

How to take Basic Training

1. Apply online (up to 2 courses in 1 semester)
 - *You must describe the reason why you would like to take the course
2. The instructor will decide the students who can attend the course.
 - *The results are informed by email and posted on the website).
3. Take basic training
4. Answer the survey online

Registration period

- ◆ Spring Semester (Apr-Sep): April
- ◆ Fall Semester (Oct-Mar): August

Details are available at



https://www.med.nagoya-u.ac.jp/medical_J/graduate/class/basic-training/

How can we get the latest information on lectures other than the Website?



1. med-all (weekly email newsletter)

Email newsletter for graduate students every Friday

*sent to your THERS email address(XXX.XX@s.mail.nagoya-u.ac.jp)

Important things related to international students are written in Japanese and English.

差出人 (自分) <med@adm.nagoya-u.ac.jp> ★

件名 【med-all通知】大学院係よりお知らせ

宛先 undisclosed-recipients: ★

大学院生各位

来週の特論・特プロの開講予定はありません。

医学部HP: 大学院生へのお知らせ

<https://www.med.nagoya-u.ac.jp/medical/J/graduate/notice/>

新型コロナウイルス感染症への対応について

Regarding the Novel Coronavirus (2019-nCoV)

名古屋大学 学生の皆様へ(家計急変世帯の学生向け対応、生活支援金等の支給 など)
<URL>

<http://www.nagoya-u.ac.jp/info/covid-19.html>

【国による 特別定額給付金(仮称)事業等に関するお知らせ】

<URL>

http://www.nagoya-u.ac.jp/info/upload_images/20200423_jimu.pdf

※ご不明な点は、関係自治体にお問い合わせください。

【国民年金保険料の猶予に係る臨時特例手続き等について】

国民年金機構から、新型コロナウイルス感染症の影響による国民年金保険料の猶予に係る臨時特例手続き等について、

2. Google Calendar (TOKURON and TOKUPURO)

The screenshot shows the Google Calendar interface. On the left, there is a calendar grid for October 2020, with the 28th highlighted. Below the grid are options to 'Create', 'Search for people', and 'My calendars'. The main area displays a list of events:

- 5 OCT, MON 4 - 5:30pm TOKURON 「臨床研究セミナー/モニタリング講習会」 開催形式：オンライン（Microsoft Teamsライブイベント）
- 8 OCT, THU 5 - 6:30pm 基礎医学特論・特徴あるプログラム（TR）
- 23 OCT, FRI 5 - 6:30pm 特徴あるプログラム（CiBoG 産官学連携プログラム Industry-government-academia Cooperation Program） オンラインOnline（Zoom）
- 29 OCT, THU 5 - 6:30pm 特徴あるプログラム（CiBoG 産官学連携プログラム Industry-government-academia Cooperation Program） オンラインOnline（Zoom）

Showing events until Oct 8, 2021. [Look for more](#)

How to Add TOKURON and TOKUPURO calendar

1. On your computer, open Google Calendar.
2. On the left side, next to “Other calendars,” click “+” and “Subscribe to calendar”.
3. In the “Add calendar” box, enter “daigakuinn.tokuron@gmail.com”.
4. Press Enter.
5. their calendar will be added on the left side under "Other calendars."

Online Classes

Some of lectures are held online.

e.g. Zoom, Microsoft Teams, etc.

【Attendance Confirmation】

(1) TOKURON

Please follow the instructions by the Instructor during the online lecture.

(2) TOKUPRO and Premium Lecture

Attendance will be checked by answering "Tests & Quizzes" on Nagoya University's e-learning system, TACT.

https://www.med.nagoya-u.ac.jp/medical_J/graduate/class/tokupro/nuctthe_instruction_of_checking_your_attendance_of_online_courses_tokupropremium_lecture_on_nuct.html

Achieving 30 credits

Subjects	Credits
Core Subjects (主科目) *You must take Distinctive educational programs (called "TOKUPRO")(特徴あるプログラム)	16
Seminar(主科目セミナー)	10
Experimental Research(主科目実験研究)	6
Minor Subjects (副科目)	10
Basic Subjects (基礎科目)	4
Special Lectures (called "TOKURON")(基盤医学特論)	2
Fundamental Medical Practice (called "Basic Training")(基盤医学実習)	2 (0.5*4)
Research Ethics (倫理教育) APRIN e-learning course Epigium e-learning course	
total	30

Research Ethics

- ◆ **APRIN e-learning Program** (for all international students of Graduate School of Medicine)

*We will notify the details by email.

- ◆ **EPIGEUM e-learning course** (for all NU graduate students)

* Please refer to “User Guide How to Avoid Plagiarism (EPIGEUM e-learning course)”

***If you have NOT completed these e-learning courses, you cannot apply for doctoral degree.**

Things to do ASAP

- ◆ Activate **Nagoya University ID**, **THERS account** and **THERS email address**.
- ◆ Take 2 Research Ethics e-learning courses (APRIN, Epigium)
*Epigium e-learning course needs **Nagoya University ID**.
- ◆ Submit the Study Plan Sheet by April 18.
*Students from the clinical laboratory must also submit the Research Guidance Plan
- ◆ Apply for Basic Training (基盤医学実習) by April 30.

Thank you for your attention

If you have any questions, feel free to contact us

Student Affairs Division

○ Lectures, certificates, etc.

med@t.mail.nagoya-u.ac.jp

○ International Student Relations

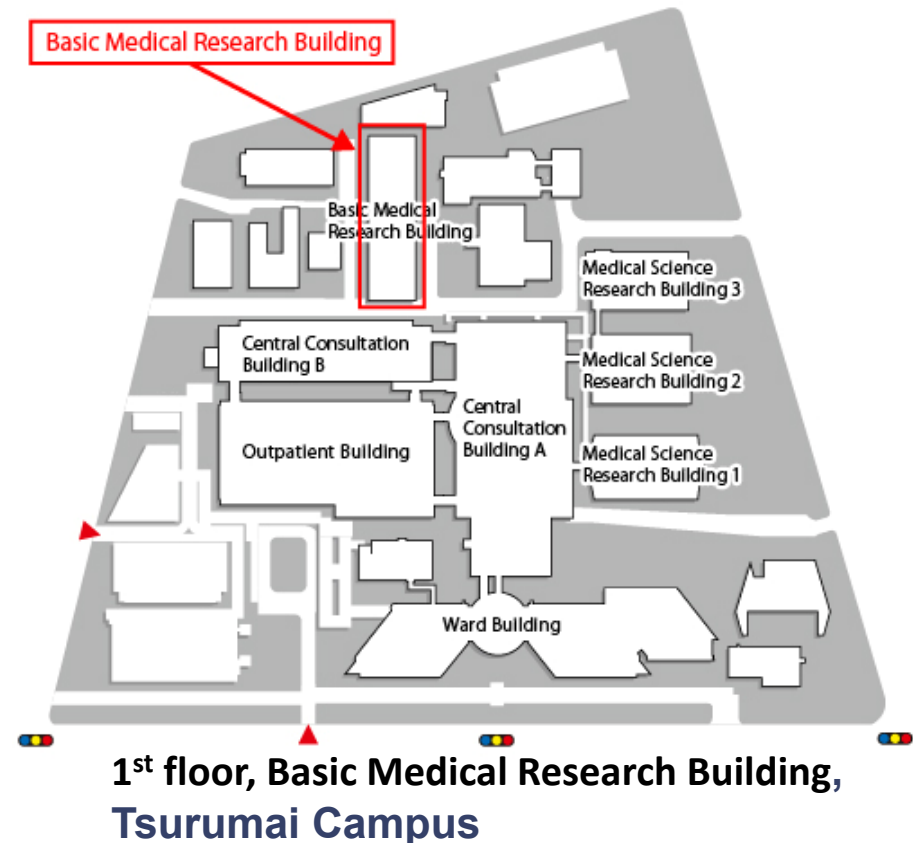
iga-ryu@t.mail.nagoya-u.ac.jp

○ Degree applications

phd.med@t.mail.nagoya-u.ac.jp

Office Hours: Monday to Friday,

8:30 a.m. - 12:00 p.m. and 1:00 p.m. - 5:00 p.m.



***The person in charge may not be available due to working from home or lunch break.**

Please contact us by email if at all possible.