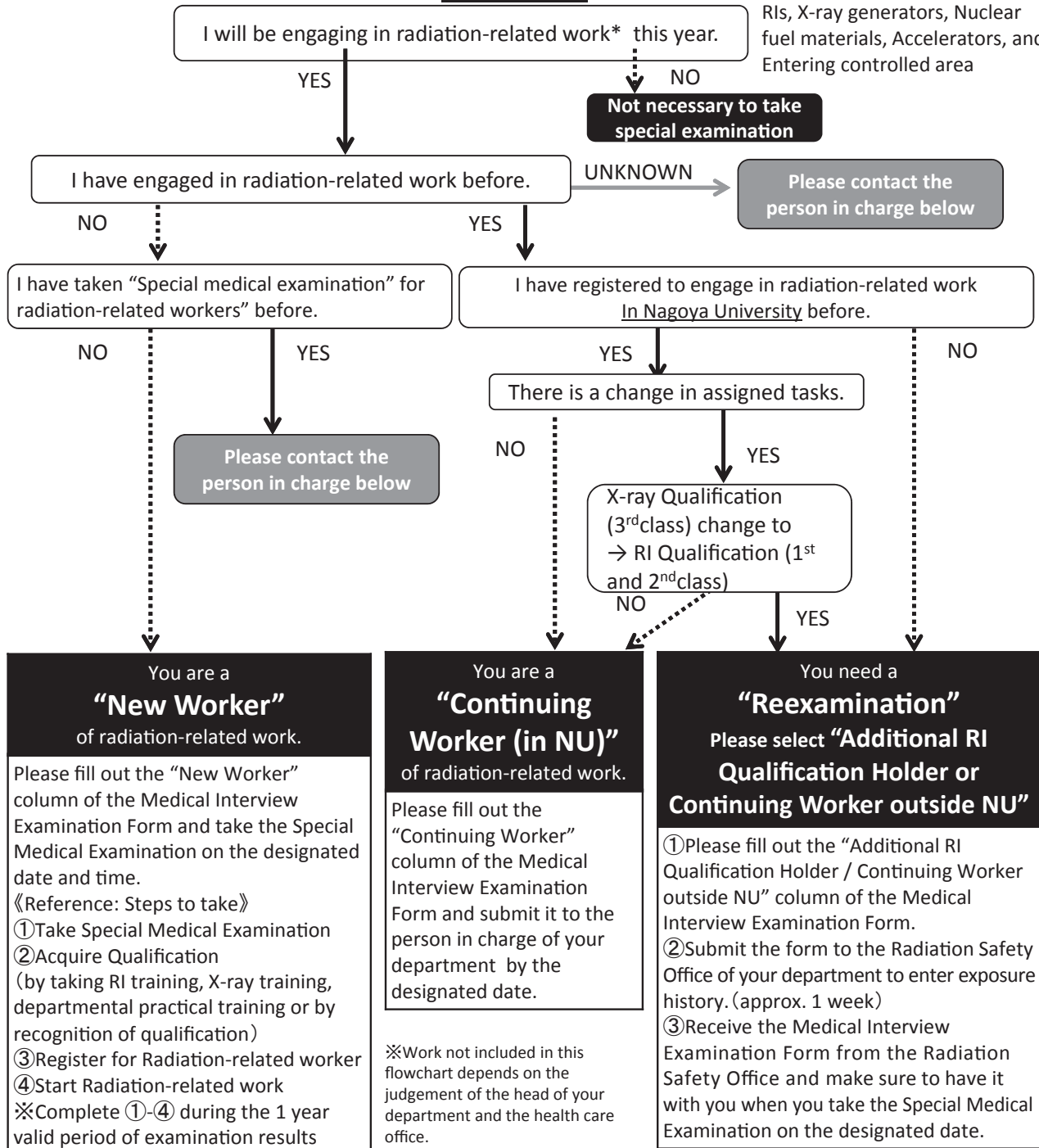


Medical Interview Examination Form for Radiation-related Workers Special Medical Examination Entry Flowchart (Students)

For Distribution

START !

*Handling Unsealed RIs, Sealed RIs, X-ray generators, Nuclear fuel materials, Accelerators, and Entering controlled area



You are a "New Worker" of radiation-related work.

Please fill out the "New Worker" column of the Medical Interview Examination Form and take the Special Medical Examination on the designated date and time.

《Reference: Steps to take》

- ① Take Special Medical Examination
- ② Acquire Qualification (by taking RI training, X-ray training, departmental practical training or by recognition of qualification)
- ③ Register for Radiation-related worker
- ④ Start Radiation-related work

※ Complete ①-④ during the 1 year valid period of examination results

You are a "Continuing Worker (in NU)" of radiation-related work.

Please fill out the "Continuing Worker" column of the Medical Interview Examination Form and submit it to the person in charge of your department by the designated date.

※ Work not included in this flowchart depends on the judgement of the head of your department and the health care office.

You need a "Reexamination" Please select "Additional RI Qualification Holder or Continuing Worker outside NU"

- ① Please fill out the "Additional RI Qualification Holder / Continuing Worker outside NU" column of the Medical Interview Examination Form.
- ② Submit the form to the Radiation Safety Office of your department to enter exposure history. (approx. 1 week)
- ③ Receive the Medical Interview Examination Form from the Radiation Safety Office and make sure to have it with you when you take the Special Medical Examination on the designated date.

《Inquiries》

If you have any questions, please ask the person in charge as below.

- General Inquiries → The person in charge in your department or Radiation Safety Office
- About taking department training → The faculty in charge
- About taking RI training, X-ray training, and others → Radioisotope Research Center Radiation Safety Office