

## Neurology

**Director** SOBUE, Gen (Professor)

10W

A large number of specialists flexibly provide medical care in response to the aging society

We perform activities such as diagnosis and treatment of neurodegenerative disease and dementia, which are expected to increase in the aging society, and stroke, which is one of the three major causes of death.

### Medical Care System

More than 35 neurology specialists in our department provide medical care in the general outpatient clinic and specialized outpatient clinic and inpatient medical care. We provide accurate diagnosis and better treatment by utilizing techniques, such as the most advanced imaging devices, and various biopsies and electrophysiological technologies in which we have made extensive achievements.

### Target Disease

Alzheimer's disease, dementia, Parkinson's disease, amyotrophic lateral sclerosis, bulbospinal muscular atrophy, spinocerebellar degeneration, multiple sclerosis, Guillain-Barre syndrome, myasthenia gravis, polymyositis, facial spasm, epilepsy, headache, dizziness, and numbness.

### Strong Fields

Diagnosis and treatment of neurodegenerative disease such as dementia and Parkinson's disease using three-Tesla MRI, PET, and SPECT. Diagnosis and treatment of diseases such as peripheral nerve disease, muscular disease, spinal cord disease, and amyotrophic lateral sclerosis using biopsy, electrophysiological tests, and genetic testing.

### Clinical Results

The annual number of outpatients: About 22,000; the annual number of new patients (only those with neurological disease): 1,255; the annual number of inpatients: 348.

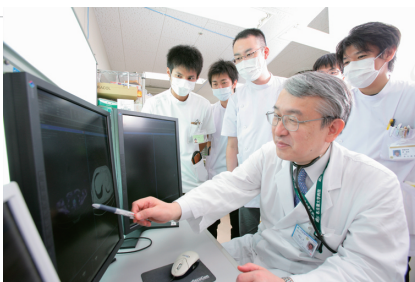


### Specialized Outpatient Clinic

We provide medical care in specialized outpatient clinics for bulbospinal muscular atrophy, amyotrophic lateral sclerosis, Parkinson's disease, and dementia. In addition, we are actively involved in the second opinion outpatient clinic.

### Advanced Medicine and Research

A clinical study of leuprorelin in patients with bulbospinal muscular atrophy, a nationwide multi-center prospective cohort study in patients with amyotrophic lateral sclerosis (JaCALS), high-dose gamma globulin therapy and plasma exchange therapy for various intractable immunologic diseases, etc.



## Thoracic Surgery

**Director** YOKOI, Kohei (Associate Professor)

3E

Extensive achievements to provide relief in diseases including lung cancer

Our department specializes in surgical treatment of thoracic malignant tumor (e.g. lung cancer) and benign disease (e.g. pneumothorax).

### Medical Care System

Nine full-time doctors (including seven thoracic surgery specialists) provide medical care. Outpatient days are Tuesday and Thursday. Surgery days are Monday, Wednesday, and Friday. Treatment strategies for patients are discussed and determined every Friday at the joint conference of Respirology, Surgery, and Radiology.

### Target Disease

Main target diseases are thoracic malignant tumor such as primary lung cancer, metastatic lung cancer, pleural mesothelioma, and thymoma. Non-neoplastic benign diseases such as myasthenia gravis requiring thymectomy, inflammatory lung disease, pyothorax, pneumothorax, chest injury, and congenital pulmonary malformation are also our target diseases.

### Strong Fields

We have safely and successfully performed surgeries in patients with locally advanced lung cancer and malignant pleural mesothelioma, which require specialized perioperative management, and in patients with severe comorbidities (e.g. chronic obstructive pulmonary disease, heart disease, diabetes, and dialysis).

### Clinical Results

The annual total number of surgeries in 2011 was 302 (156 patients with lung cancer, 39 patients with mediastinal tumor, 41 patients with metastatic lung tumor, five patients with malignant pleural mesothelioma, 61 patients with other diseases; there was one patient who died in-hospital day). About half of the surgeries were performed for lung cancer.

### Specialized Outpatient Clinic

Although we do not have specialized outpatient clinics, our department is characterized by extensive experience in treatment of diseases, especially in lung cancer, malignant pleural mesothelioma, and advanced invasive thymoma. We welcome patients seeking second opinions.



### Advanced Medicine and Research

We conduct various basic research and clinical studies to establish new evidence. Currently, a phase II study of postoperative adjuvant chemotherapy and clinical studies on topics such as multimodality therapy for lung cancer with thoracic wall invasion and investigation of limited surgery for early-stage lung cancer are ongoing.

